

# Atlas Copco Dryers

BD 480

## Parts list

From following serial No. onwards:

APF 156 875

- Copyright 2012, Atlas Copco Airpower n.v., Antwerp, Belgium.  
Any unauthorized use or copying of the contents or any part thereof is prohibited.  
This applies in particular to trademarks, model denominations, part numbers and drawings.
- **Use only authorized parts.** Any damage or malfunction caused by the use of unauthorized parts is not covered by Warranty or Product Liability.

No. 2930 1663 01

Registration code : APC Desiccant dryers

2012-04

[www.atlascopco.com](http://www.atlascopco.com)

**Atlas Copco**

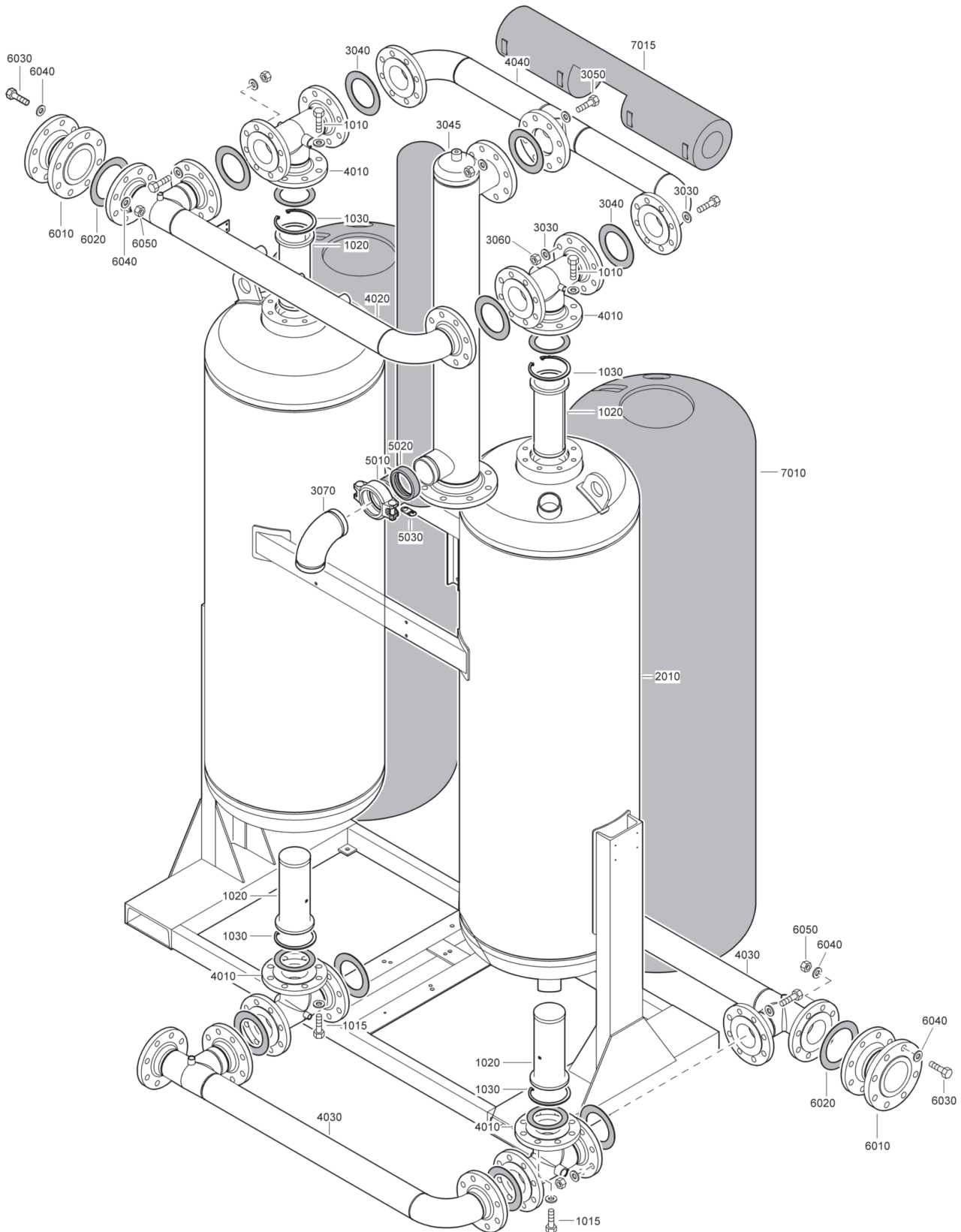


Contents  
Inhoud  
Innehåll  
Inhaltsverzeichnis  
Table des matières  
Indice

Indice  
Innholdsfortegnelse  
Indice  
Indholdsfortegnelse  
Sisällysluettelo

Pressure vessels .....	1	Cooling air and blow-off .....	6
Valves		Cubicle .....	7
- Without High Inlet Temperature .....	2	Option	
- With High Inlet Temperature .....	3	- Filters .....	8
Heaters .....	4	- PDP control and Sonic nozzle .....	9
Blower .....	5	Vortex .....	7

1



73038

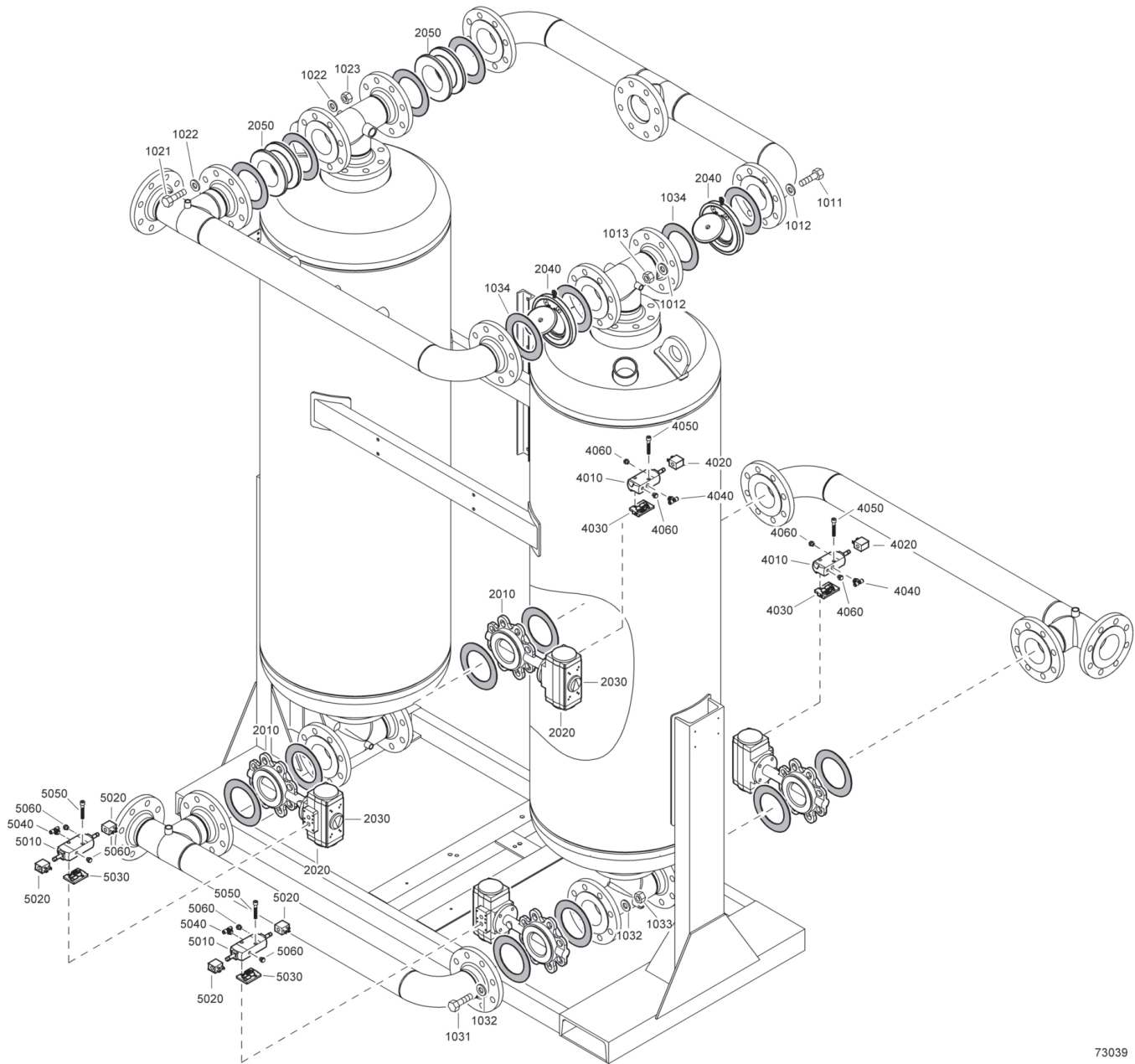
73038

## Pressure vessel

1

Ref.	Part number	Qty	Name	Remarks	Ref.	Part number	Qty	Name	Remarks
1010	0147 1478 03	32	CE Bolt ASME (U Stamp)		5020	0634 1000 82	• 1	Gasket	
1015	0147 1107 67	32	Screw CE -40 °C		5030	1624 4133 00	• 1	Label ANSI Flanges Without Filter Option	
1020	1624 8555 00	4	Strainer		6010	1624 8781 01	3	Adapter flange	
1030	0335 2176 00	4	Intern.circlip		6020	0650 1000 94	3	Gasket	
	1624 8518 00	1	Welding module		6030	0147 1483 03	24	Bolt	
2010	1624 8507 99	• 2	Vessel size		6040	0301 2378 00	48	Washer	
	1624 8507 00	•• 1	Vessel ASME (U Stamp) -40 °C		6050	0266 2114 00	24	Nut ASME (U Stamp) DD + PD inlet filter and DDp outlet filter for GA PD inlet filter and DDp outlet filter for Z-compre	
1020	1624 8555 00	4	Strainer		6010	1624 8781 00	1	Adapter flange	
1030	0335 2176 00	4	Intern.circlip		6020	0650 1001 14	1	Gasket	
	1624 8518 60	1	Welding module		6030	0147 1483 03	8	Bolt	
2010	1624 8507 86	• 2	Vessel		6040	0301 2378 00	16	Washer	
	1624 8507 00	•• 1	Vessel Piping purge CE		6050	0266 2114 00	8	Nut Insulation CE Insulated weld. module	
3030	0301 2378 00	32	Washer		7010	1624 8507 01	2	Insulation Insulation ASME (U Stamp) Insul weld module	
3040	0650 1001 14	3	Gasket		7010	1624 8507 01	2	Insulation Insulation CE	
3045	1624 8665 00	1	Housing heater		7015	1624 8522 01	1	Insulation	
3050	0147 1483 03	8	Bolt						
3060	0266 2114 00	8	Nut						
3070	0634 1001 67	1	Pipe						
	1950 0224 10	1	Pipe						
4010	1624 8521 00	• 4	Pipe						
4020	1624 8520 00	• 1	Pipe						
4030	1624 8519 00	• 2	Pipe						
4040	1624 8522 00	• 1	Pipe						
	1624 4132 85	1	Coupling						
5010	0634 1001 21	• 1	Victaulic coupling						

2



73039

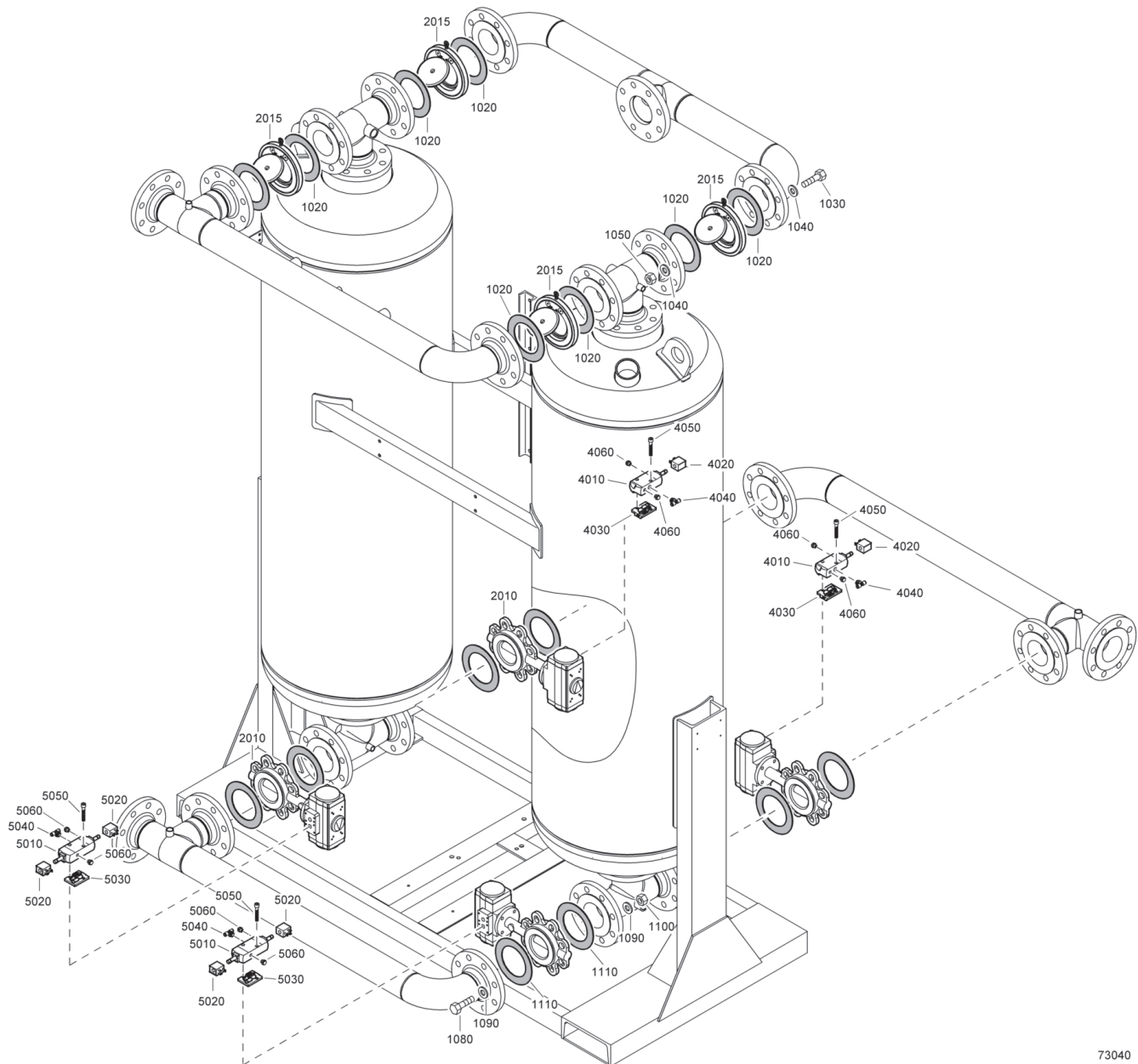
73039

## Valves - Purge Without High inlet temperature

2

Ref.	Partnumber	Qty	Name	Remarks	Ref.	Partnumber	Qty	Name	Remarks
			<b>CE</b>		2040	1624 8391 00	2	Valve check	
1011	0147 1492 03	32	Bolt		2050	1617 9105 00	2	Wafer check valve	
1012	0301 2378 00	64	Washer					<b>Pneumatic Assembly</b>	
1013	0266 2114 00	32	Nut		4010	1624 8251 80	4	Valve	
1021	0147 1487 03	16	Bolt		4020	1624 8252 00	2	Coil solenoid valve	
1022	0301 2378 00	32	Washer		4030	1624 8224 00	2	Connection Plate	
1023	0266 2114 00	16	Nut		4040	9090 1528 00	2	T coupling	
1031	0147 1494 03	16	Bolt		4050	0211 1212 03	4	Screw	
1032	0301 2378 00	32	Washer		4060	0803 5011 08	4	Silencer	
1033	0266 2114 00	16	Nut		5010	1624 8255 80	4	Valve	
1034	0650 1001 14	4	Gasket		5020	1624 8252 00	4	Coil solenoid valve	
	<b>1617 9074 83</b>	<b>4</b>	<b>Valve assembly</b>		5030	1624 8224 00	2	Connection Plate	
2010	1617 9074 00	• 1	Valve butterfly		5040	9090 1528 00	2	T coupling	
2020	1624 8307 00	• 1	Indicator valve position		5050	0211 1212 03	4	Screw	
2030	1624 8282 00	• 1	Actuator		5060	0803 5011 08	4	Silencer	

3



73040

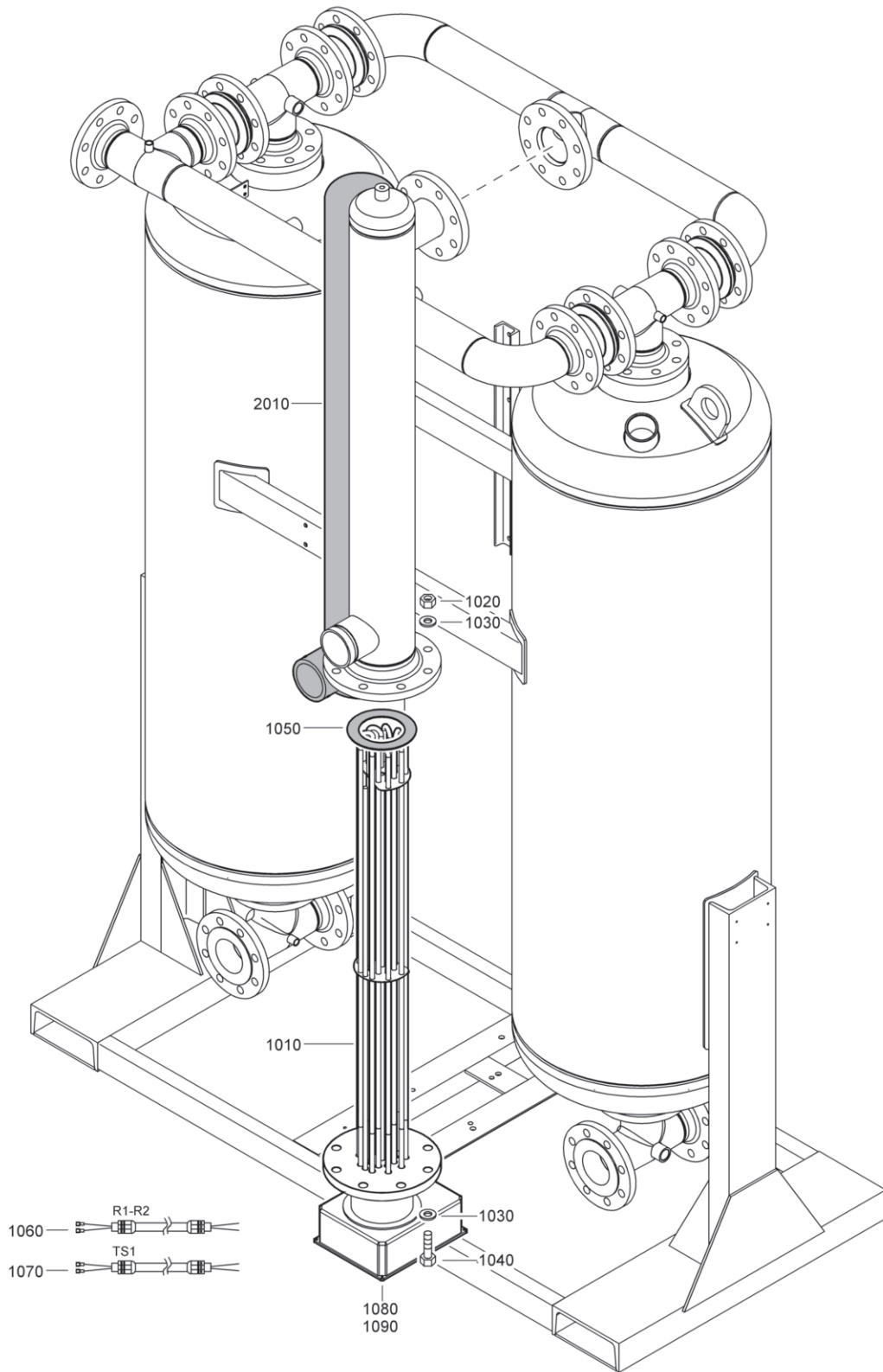
73040



**Valves - Purge With High inlet temperature****3**

Ref.	Partnumber	Qty	Name	Remarks	Ref.	Partnumber	Qty	Name	Remarks
			<b>CE</b>					<b>Pneumatic Assembly</b>	
			<b>High inlet temperature</b>		4010	1624 8251 80	4	Valve	
1020	0650 1001 14	8	Gasket		4020	1624 8252 00	2	Coil solenoid valve	
1030	0147 1492 03	32	Bolt		4030	1624 8224 00	2	Connection Plate	
1040	0301 2378 00	64	Washer		4040	9090 1528 00	2	T coupling	
1050	0266 2114 00	32	Nut		4050	0211 1212 03	4	Screw	
1080	0147 1494 03	32	Bolt		4060	0803 5011 08	4	Silencer	
1090	0301 2378 00	64	Washer		5010	1624 8255 80	4	Valve	
1100	0266 2114 00	32	Nut		5020	1624 8252 00	4	Coil solenoid valve	
1110	0650 1001 14	8	Gasket		5030	1624 8224 00	2	Connection Plate	
<b>2010</b>	<b>1624 8243 81</b>	<b>4</b>	<b>Valve assembly</b>		5040	9090 1528 00	2	T coupling	
	1624 8239 01	• 1	Actuator		5050	0211 1212 03	4	Screw	
	1624 8243 00	• 1	Valve butterfly		5060	0803 5011 08	4	Silencer	
2015	1624 8729 00	4	Valve check						

4



73041

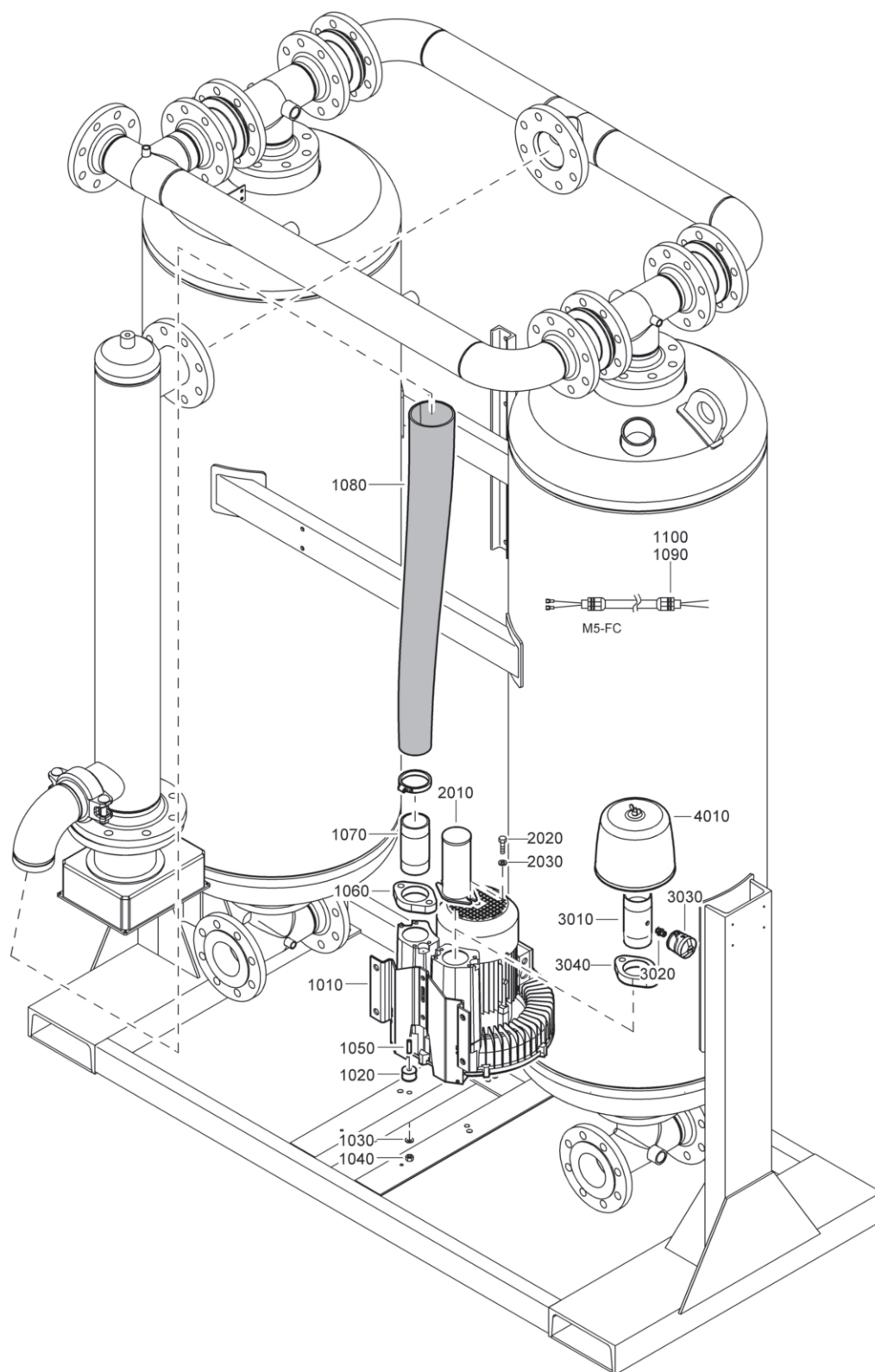
73041

## Heaters

## 4

Ref.	Partnumber	Qty	Name	Remarks	Ref.	Partnumber	Qty	Name	Remarks
			<b>IEC</b>		1060	1624 8597 03	1	Cable	
			<b>50 Hz 400 V (3 ph)</b>		1070	1624 8598 00	1	Cable	
1010	1624 8606 00	1	Heater core		1080	0697 9809 23	2	Nut	
1020	0266 2114 00	8	Nut		1090	0697 9810 28	1	Plug	
1030	0301 2378 00	16	Washer					<b>CSA-UL</b>	
1040	0147 1484 03	8	Hex. head screw					<b>440-460 V (3 ph)</b>	
1050	0650 1001 00	1	Gasket		1010	1624 8606 20	1	Heater core	
1060	1624 8597 00	1	Cable		1020	0266 2114 00	8	Nut	
1070	1624 8598 00	1	Cable		1030	0301 2378 00	16	Washer	
1080	0697 9809 23	2	Nut		1040	0147 1484 03	8	Hex. head screw	
1090	0697 9810 28	1	Plug		1050	0650 1001 00	1	Gasket	
			<b>IEC</b>		1060	1624 8597 00	1	Cable	
			<b>High ambient condition</b>		1070	1624 8598 00	1	Cable	
			<b>50 Hz 400 V (3 ph)</b>		1080	0697 9810 28	1	Plug	
1010	1624 8606 00	1	Heater core		1090	0697 9809 23	2	Nut	
1020	0266 2114 00	8	Nut					<b>Insulation heaterhousing</b>	
1030	0301 2378 00	16	Washer					<b>CE</b>	
1040	0147 1484 03	8	Hex. head screw		2010	1624 8546 01	1	Insulation	
1050	0650 1001 00	1	Gasket						

5



73042

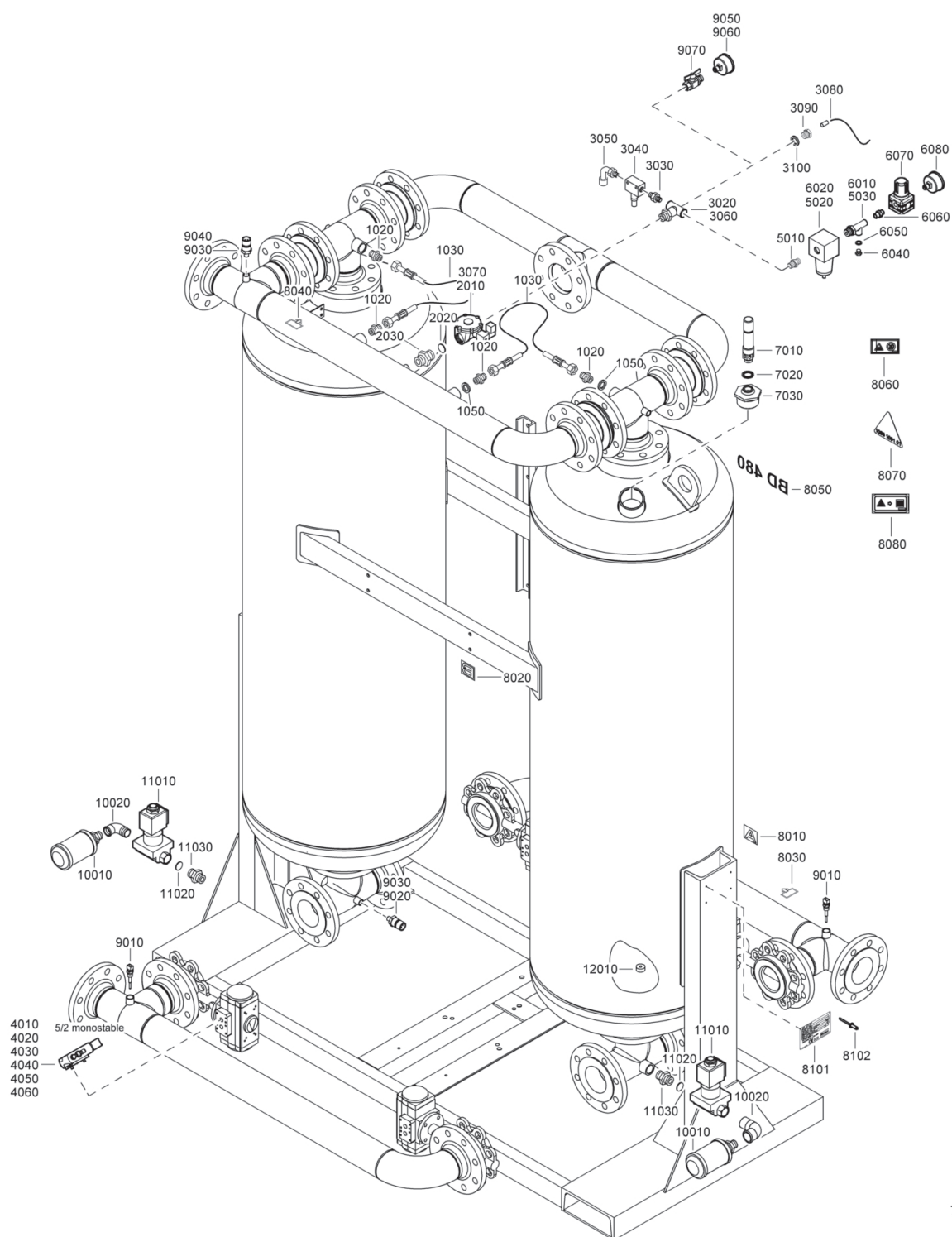
73042

## Blower

5

Ref.	Part number	Qty	Name	Remarks	Ref.	Part number	Qty	Name	Remarks
1010	1089 9459 56	1	Blower		2020	0147 1323 03	2	Hex. head screw	
1020	1624 8573 00	1	Foot blower mounting		2030	0301 2335 00	2	Plain washer	
1030	0301 2144 01	3	Washer					<b>Blowerfilter</b>	
1040	0291 1128 20	3	Nut		3010	1624 8591 00	1	Pipe	
1050	0248 9980 90	3	Rod		3020	0603 4200 20	1	Nipple hexagon	
1060	1624 8275 00	1	Flange		3030	1613 7912 01	1	Indicator	
1070	1624 8543 00	1	Pipe		3040	1624 8275 00	1	Flange	
1080	1624 8198 11	1	Flexible hose			<b>1617 6098 00</b>	<b>1</b>	<b>Filter air inlet blower</b>	
1090	1624 8608 00	1	Cable		4010	1617 6235 01	• 1	Paper filter insert	
1100	0697 9745 63	1	Enlarger						
			<b>Std blower filter</b>						
2010	1624 8637 00	1	Strainer flanged						

6



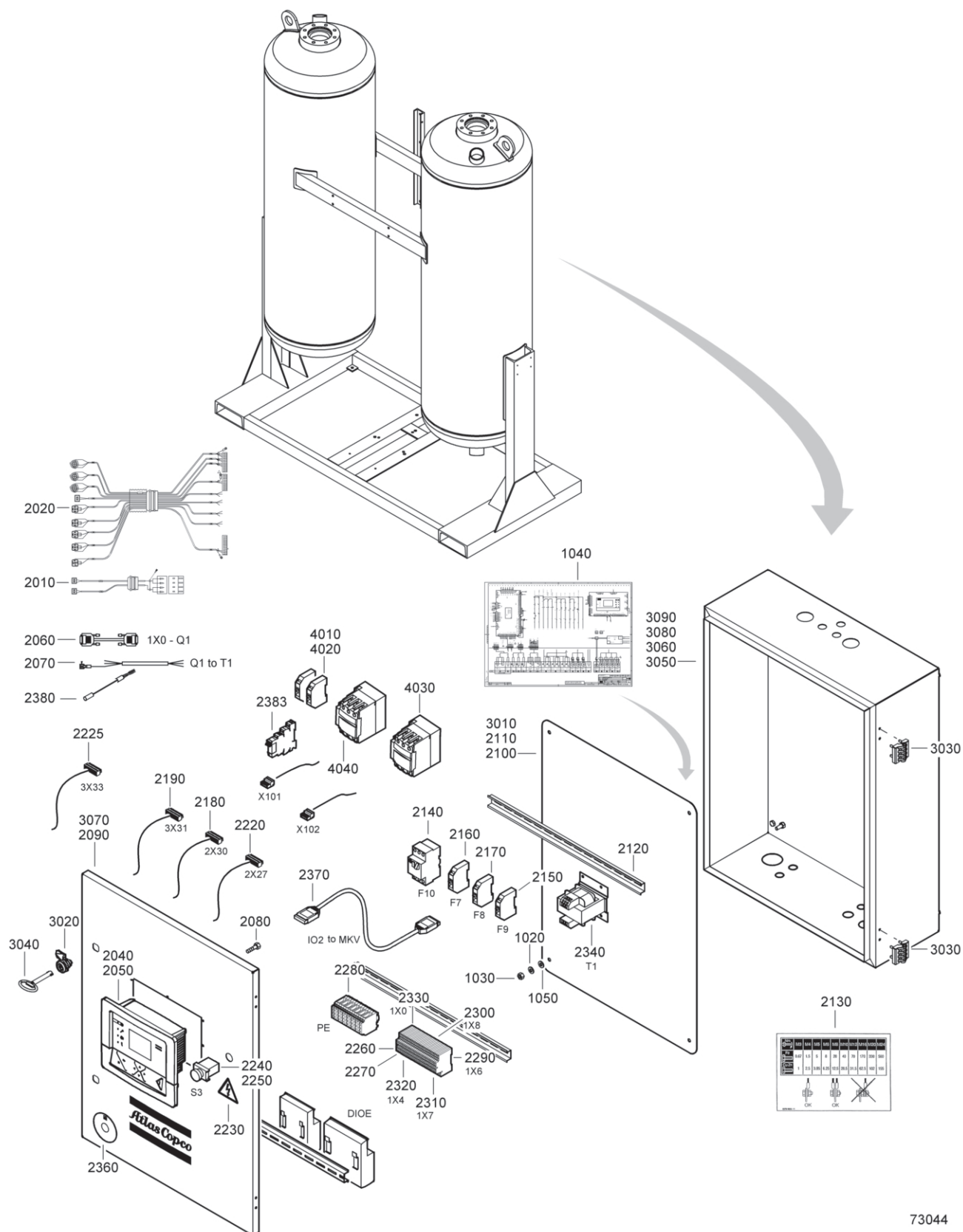
73043

## Cooling air and blow-off

6

Ref.	Part number	Qty	Name	Remarks	Ref.	Part number	Qty	Name	Remarks
			<b>Purge air assy</b>		7020	0605 8301 26	2	Bushing	
1020	0571 0035 25	4	Hexagon nipple		7030	0661 1000 39	2	Washer	
1030	0575 0058 12	2	Hose					<b>Label set</b>	
1050	0661 1007 00	4	Seal washer		8010	1617 9485 01	1	Label A	
	<b>1624 8352 80</b>	<b>2</b>	<b>Assembly solenoid valve</b>		8020	1617 9485 02	1	Label B	
2010	1089 0641 03	• 1	Valve solenoid		8030	1617 9588 00	1	Inlet label	
2020	1624 8352 00	• 1	Strainer		8040	1617 9587 00	1	Outlet label	
2030	0603 4100 36	• 1	Hexagon nipple		8050	1624 8388 06	1	Label	
			<b>Pneumatic assembly</b>		8060	1617 9292 00	4	Label warning	
3020	0583 8140 53	2	Tee		8070	1088 1001 01	2	Warning mark	
3030	0603 4300 05	2	Hex. nipple		8080	1617 9346 00	1	Warning label	
3040	8204 0941 09	2	Valve needle					<b>Dataplate</b>	
3050	9090 1519 00	2	Coupl. elbow					<b>CE</b>	
3060	9090 1527 00	2	T coupling		8101	1624 3915 02	1	Dataplate	
3070	1089 0668 03	2	Sol. valve		8102	0129 3270 52	4	Rivet blind	
3080	0070 6002 04	AR	Plastic tube					<b>ASME (U Stamp)</b>	
3090	0686 3716 01	2	Plug		8101	1624 3915 03	1	Dataplate	
3100	0653 1070 00	2	Flat gasket		8102	0129 3270 52	4	Rivet blind	
	<b>1624 8251 80</b>	<b>2</b>	<b>Valve</b>					<b>CSA-UL</b>	
4010	1624 8251 00	• 1	Valve		8101	1614 8949 22	1	Dataplate	
4020	1624 8252 00	• 1	Coil					<b>Sensor set</b>	
4030	1624 8224 00	• 1	Plate connection		9010	1089 0574 70	2	Sensor	
4040	9090 1528 00	• 1	T coupling		9020	1089 9625 16	2	Sensor press	
4050	0211 1212 03	• 2	Screw		9030	1621 0148 00	3	Nipple	
4060	0803 5011 08	• 2	Silencer		9040	1089 9625 36	1	Press. transducer	
			<b>Pilot air</b>		9050	0872 1000 64	2	Manometer	
5010	9740 2021 22	1	Hex nipple		9060	9740 2028 22	2	Socket	
5020	0803 5011 11	1	Filter		9070	0852 0010 45	2	Ball valve	
5030	9090 1528 00	1	T coupling					<b>Blow off assembly</b>	
			<b>External pilot air</b>		10010	1617 6164 01	2	Silencer	
6010	9090 1528 00	1	T coupling		10020	0605 9500 09	2	Elbow	
6020	8102 2973 41	1	Mini filter			<b>1624 8352 80</b>	<b>2</b>	<b>Assembly solenoid valve</b>	
6040	0686 3716 01	1	Plug		11010	1089 0641 03	• 1	Valve solenoid	
6050	0653 1070 00	1	Flat gasket		11020	1624 8352 00	• 1	Strainer	
6060	0603 4100 41	1	Hex. nipple		11030	0603 4100 36	• 1	Hexagon nipple	
6070	9093 0033 01	1	Regulator					<b>Nozzle assy</b>	
6080	9090 1657 00	1	Gauge		12010	1617 6661 05	2	Nozzle	
			<b>Safety valve</b>						
			<b>CE</b>						
			<b>ASME (U Stamp)</b>						
7010	0830 1010 10	2	Valve						

7



73044

73044

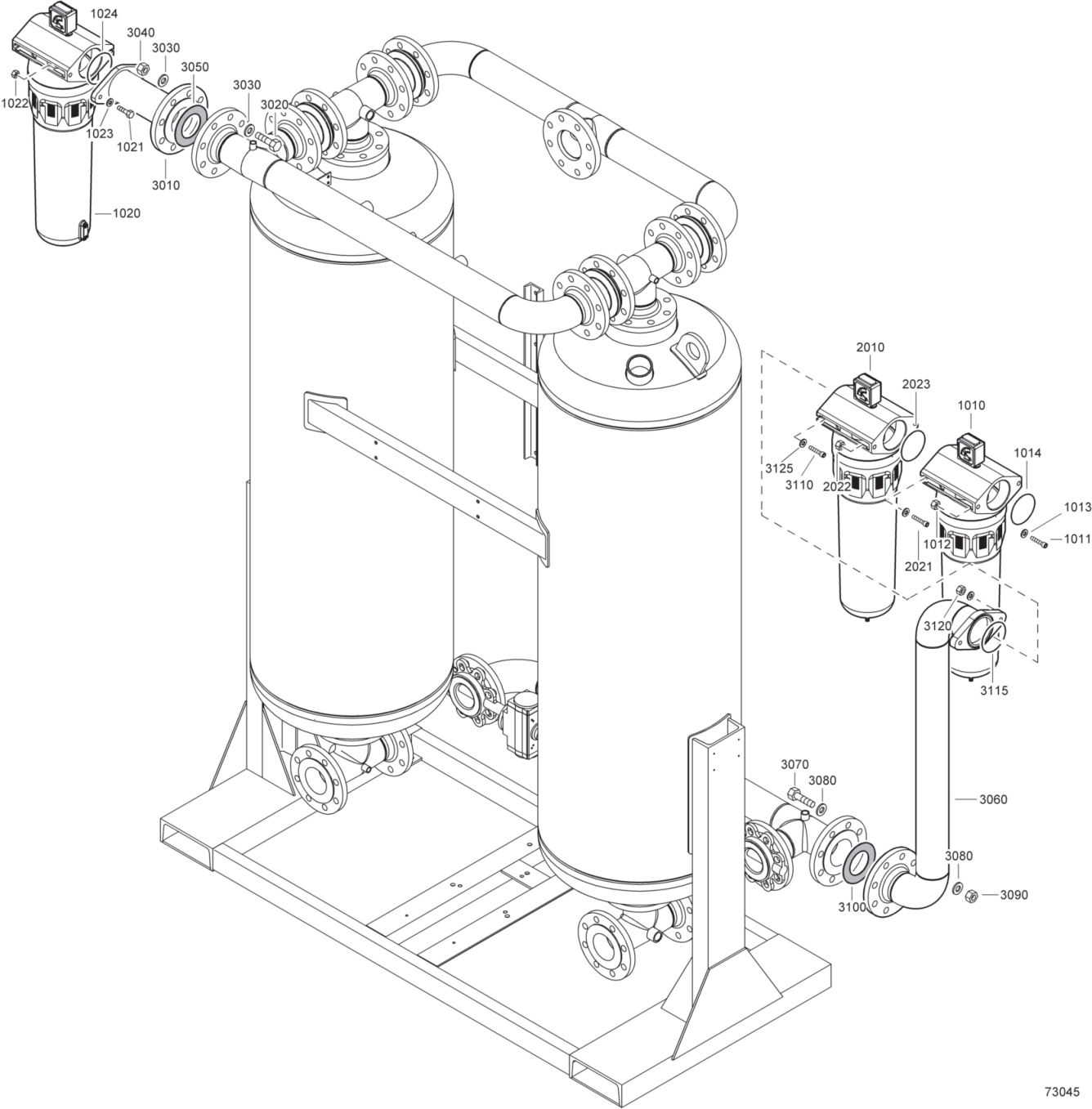


## Cubicle

7

Ref.	Part number	Qty	Name	Remarks	Ref.	Part number	Qty	Name	Remarks
			<b>IEC</b>						
			<b>50 Hz 400 V (3 ph)</b>						
1020	0300 8019 00	4	Washer		3080	0228 1000 05	••• 1	Screw	
1030	0266 2110 00	4	Hexagon nut			<b>1900 5001 52</b>	• 1	<b>Power circuit</b>	
1050	0333 3220 00	2	Lock washer		4010	0017 2016 16	•• 1	Cable	
	<b>1900 5001 65</b>	1	<b>Cubicle</b>		4020	1089 0390 55	•• 1	Aux. contact	
1040	9827 2118 01	• 1	Diagram service		4030	1089 0390 73	•• 1	Overload relay	
	<b>1900 5001 64</b>	• 1	<b>Cubicle</b>		4040	1089 0390 84	•• 1	Overload relay	
2010	1624 8626 00	•• 1	Cable			<b>1900 5001 54</b>	• 1	<b>Power circuit</b>	
2020	1624 8627 00	•• 1	Cable		4010	0017 2016 18	•• 1	Cable	
2040	1900 5200 32	•• 1	Elektronikon mb i/o2		4020	1089 0390 55	•• 1	Aux. contact	
2050	1900 5200 12	•• 1	Elektronikon graphic		4030	1089 0390 56	•• 1	Overload relay	
2060	0017 2012 02	•• AR	Cable		4040	1089 0390 72	•• 1	Overload relay	
2070	0017 2016 16	•• AR	Cable					<b>CSA-UL</b>	
2080	0160 6037 00	•• 8	Screw					<b>60 Hz 440-460 V (3 ph)</b>	
2090	0690 1125 00	•• 1	Label		1020	0300 8019 00	4	Washer	
2100	0694 5900 04	•• 16	Faston		1030	0266 2110 00	4	Hexagon nut	
2110	0991 8010 00	•• AR	Raceway		1050	0333 3220 00	2	Lock washer	
2120	0993 7106 00	•• AR	Mounting rail			<b>1900 5002 35</b>	1	<b>Cubicle</b>	
2130	1079 9906 09	•• 1	Label		1040	9827 2118 01	• 1	Diagram service	
2140	1081 0420 65	•• 1	Circuit breaker			<b>1900 5002 34</b>	• 1	<b>Cubicle</b>	
2150	1081 0420 73	•• 1	Circuit breaker		2010	1624 8626 00	•• 1	Cable	
2160	1081 0420 77	•• 1	Circuit breaker		2020	1624 8627 00	•• 1	Cable	
2170	1081 0420 78	•• 1	Circuit breaker		2040	1900 5200 31	•• 1	I/o2 module met ccsaus logo	
2180	1088 0031 32	•• 1	Connector		2050	1900 5200 11	•• 1	Elektronikon mk5 graphic	
2190	1088 0031 46	•• 1	Connector		2140	1081 0420 26	•• 1	Circuit breaker	
2220	1088 0037 81	•• 1	Connector		2150	1081 0420 72	•• 2	Circuit breaker	
2225	1088 0037 83	•• 1	Connector		2170	1081 0420 78	•• 1	Circuit breaker	
2230	1088 1001 01	•• 1	Warning mark		2240	1089 0263 43	•• 1	Emergency stop	
2240	1089 0263 43	•• 1	Push button		2250	1089 0263 44	•• 1	Emergency stop	
2250	1089 0263 44	•• 1	Contact block		2340	1089 9514 38	•• 1	Transformer	
2260	1089 0577 21	•• 2	End section		2370	1622 5099 04	•• 1	Elektronikon cable	
2270	1089 0577 23	•• AR	Terminal bridge		2380	1624 8256 01	•• 1	Cable	
2280	1089 0577 40	•• 1	Terminal		2383	1089 9413 56	•• 1	Circuit breaker	
2290	1089 0577 49	•• 2	Terminal			<b>1624 8549 80</b>	•• 1	<b>Assembly cubicle</b>	
2300	1089 0577 49	•• 6	Terminal		3010	1624 8551 00	••• 1	Backplate	
2310	1089 0577 49	•• 4	Terminal		3020	1624 0673 00	••• 2	Lock	
2320	1089 0577 49	•• 10	Terminal		3030	1624 0668 00	••• 2	Hinge	
2330	1089 0577 93	•• 2	Terminal		3040	1089 9154 02	••• 1	Key	
2340	1089 9514 38	•• 1	Transformer		3050	1202 6584 00	••• 1	Seal	
2350	1613 6639 22	•• 1	Dataplate		3060	0266 2110 00	••• 4	Hexagon nut	
2360	1621 0478 00	•• 1	Label		3070	1624 8550 00	••• 1	Door cubicle	
2370	1622 5099 03	•• 1	Cable		3080	1624 8549 00	••• 1	Cubicle	
2380	1624 8256 01	•• 1	Cable		3090	0228 1000 05	••• 1	Screw	
	<b>1624 8549 80</b>	•• 1	<b>Assembly cubicle</b>			<b>1900 5001 52</b>	• 1	<b>Power circuit</b>	
3010	1624 8551 00	••• 1	Backplate		4010	0017 2016 16	•• 1	Cable	
3020	1624 0673 00	••• 2	Lock		4020	1089 0390 55	•• 1	Aux. contact	
3030	1624 0668 00	••• 2	Hinge		4030	1089 0390 73	•• 1	Overload relay	
3040	1089 9154 02	••• 1	Key		4040	1089 0390 84	•• 1	Overload relay	
3050	1202 6584 00	••• 1	Seal			<b>1900 5001 54</b>	• 1	<b>Power circuit</b>	
3060	0266 2110 00	••• 4	Hexagon nut		4010	0017 2016 18	•• 1	Cable	
3070	1624 8550 00	••• 1	Door cubicle		4020	1089 0390 55	•• 1	Aux. contact	
3080	1624 8549 00	••• 1	Cubicle		4030	1089 0390 56	•• 1	Overload relay	
					4040	1089 0390 72	•• 1	Overload relay	

8



73045

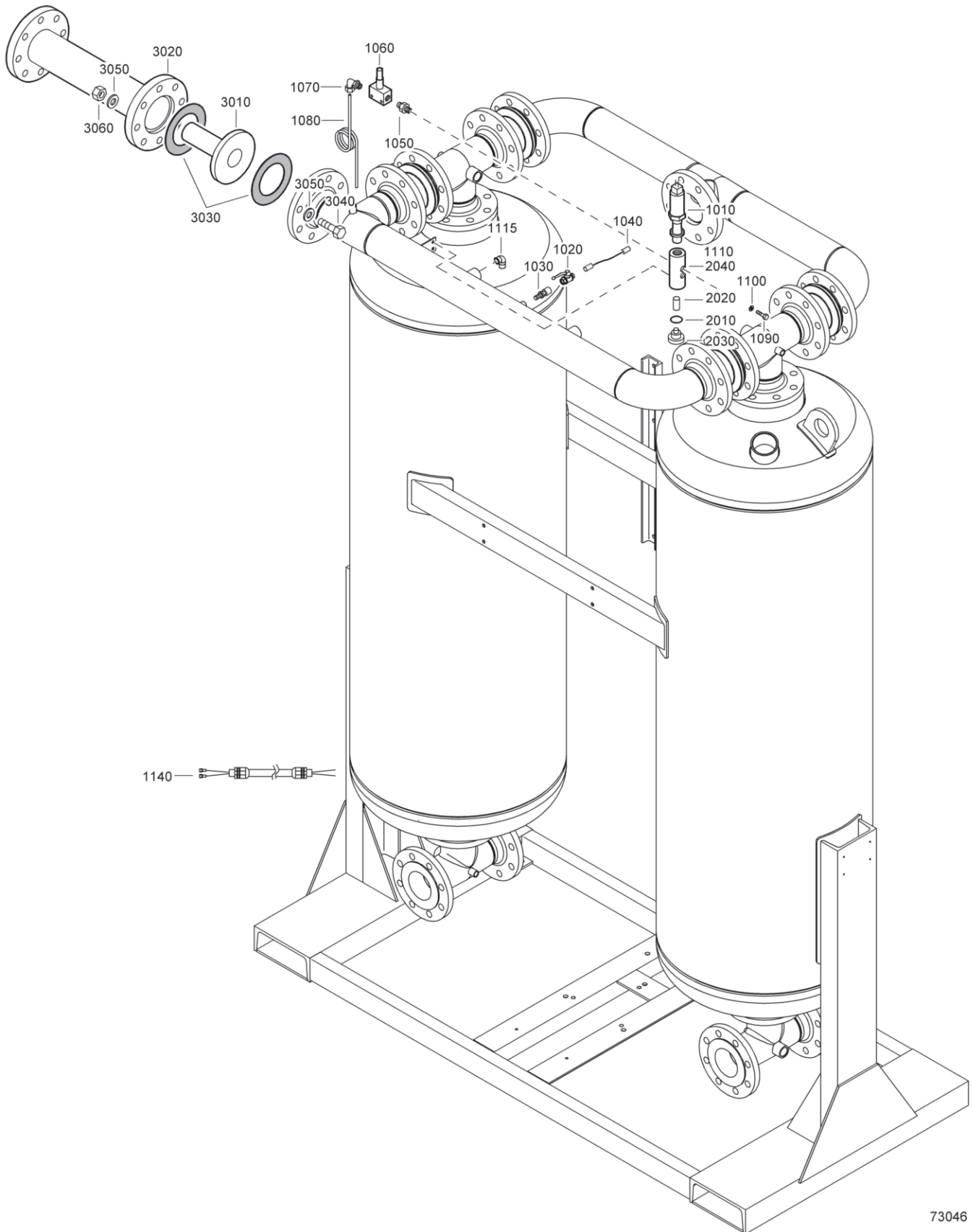
73045

## Option - Filters

8

Ref.	Partnumber	Qty	Name	Remarks	Ref.	Partnumber	Qty	Name	Remarks
			<b>ASME (U Stamp)</b>		1020	8102 2603 80	• 1	DDp 390	
			<b>PD inlet filter and DDp outlet</b>		1021	0211 1366 03	• 2	Hex sock. screw	
			<b>filter for Z-compre</b>		1022	0266 2111 00	• 2	Nut	
1010	8102 2608 36	1	PD 390		1023	0333 3232 00	• 2	Lock washer	
1011	0211 1366 03	2	Hex sock. screw		1024	0663 2106 16	• 1	O-ring	
1012	0266 2111 00	2	Nut					<b>CE</b>	
1013	0333 3232 00	2	Lock washer					<b>PD inlet filter and DDp outlet</b>	
1014	0663 2106 16	1	O-ring					<b>filter for Z-compre</b>	
1020	8102 2608 10	1	DDp 390		1010	8102 2603 72	1	PD 390	
1021	0211 1366 03	2	Hex sock. screw		1011	0211 1366 03	2	Hex sock. screw	
1022	0266 2111 00	2	Nut		1012	0266 2111 00	2	Nut	
1023	0333 3232 00	2	Lock washer		1013	0333 3232 00	2	Lock washer	
1024	0663 2106 16	1	O-ring		1014	0663 2106 16	1	O-ring	
			<b>ASME (U Stamp)</b>		1020	8102 2603 80	1	DDp 390	
			<b>DD + PD inlet filter and DDp</b>		1021	0211 1366 03	2	Hex sock. screw	
			<b>outlet filter for GA</b>		1022	0266 2111 00	2	Nut	
2010	8102 2608 02	1	DD 390		1023	0333 3232 00	2	Lock washer	
2021	0211 1366 03	2	Hex sock. screw		1024	0663 2106 16	1	O-ring	
2022	0266 2111 00	2	Nut					<b>CE</b>	
2023	0663 2106 16	2	O-ring					<b>DD + PD inlet filter and DDp</b>	
	<b>1603 8502 48</b>	<b>1</b>	<b>Filter option</b>					<b>outlet filter for GA</b>	
1010	8102 2608 36	• 1	PD 390					<b>PD inlet filter and DDp outlet</b>	
1011	0211 1366 03	• 2	Hex sock. screw					<b>filter for Z-compre</b>	
1012	0266 2111 00	• 2	Nut		3010	1624 8218 00	1	Pipe	
1013	0333 3232 00	• 2	Lock washer		3020	0147 1483 03	8	Bolt	
1014	0663 2106 16	• 1	O-ring		3030	0301 2378 00	16	Washer	
1020	8102 2608 10	• 1	DDp 390		3040	0266 2114 00	8	Nut	
1021	0211 1366 03	• 2	Hex sock. screw		3050	0650 1001 14	1	Gasket	
1022	0266 2111 00	• 2	Nut		3060	1624 8220 00	1	Pipe	
1023	0333 3232 00	• 2	Lock washer		3070	0147 1483 03	8	Bolt	
1024	0663 2106 16	• 1	O-ring		3080	0301 2378 00	16	Washer	
			<b>CE</b>		3090	0266 2114 00	8	Nut	
			<b>DD + PD inlet filter and DDp</b>		3100	0650 1001 14	1	Gasket	
			<b>outlet filter for GA</b>					<b>PD inlet filter and DDp outlet</b>	
2010	8102 2603 64	1	DD 390					<b>filter for Z-compre Yes</b>	
2021	0211 1366 03	2	Hex sock. screw					<b>PD inlet filter and DDp outlet</b>	
2022	0266 2111 00	2	Nut					<b>filter for GA Yes</b>	
2023	0663 2106 16	1	O-ring		3010	<b>1624 8218 00</b>	<b>1</b>	<b>Pipe filter option</b>	
	<b>1603 8600 74</b>	<b>1</b>	<b>Filter option</b>			1624 8376 00	• 1	Flange	
1010	8102 2603 72	• 1	PD 390		3110	0211 1366 03	2	Hex sock. screw	
1011	0211 1366 03	• 2	Hex sock. screw		3115	0663 2106 16	1	O-ring	
1012	0266 2111 00	• 2	Nut		3120	0266 2111 00	2	Nut	
1013	0333 3232 00	• 2	Lock washer		3125	0333 3232 00	2	Lock washer	
1014	0663 2106 16	• 1	O-ring						

9



73046

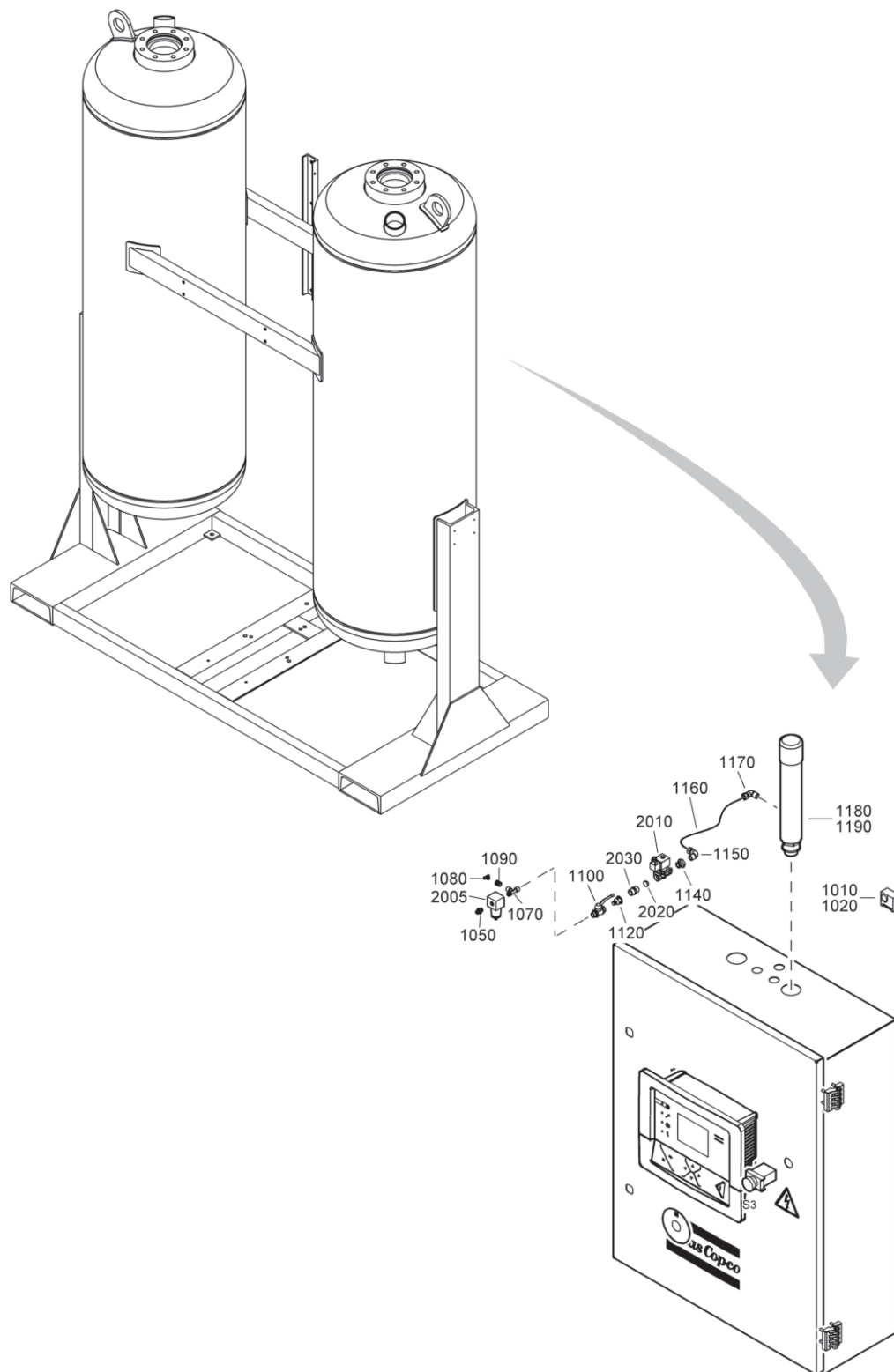
73046

## Option - PDP control and Sonic nozzle

9

Ref.	Partnumber	Qty	Name	Remarks	Ref.	Partnumber	Qty	Name	Remarks
			<b>Dew point control</b>					<b>Sonic nozzle</b>	
1010	1089 9481 53	1	Sensor		3010	1624 8601 02	1	Sonic nozzle	
1020	0852 0010 45	1	Ball valve		3020	1624 8602 00	1	Flange	
1030	9740 2001 32	1	Coupling		3030	0650 1001 14	1	Gasket	
1040	0070 6002 38	AR	Ptfe tube		3040	0147 1483 03	8	Bolt	
1050	9740 2021 11	1	Hexagon nipple		3050	0301 2378 00	16	Washer	
1060	8204 0941 09	1	Valve needle		3060	0266 2114 00	8	Nut	
1070	0582 2000 22	1	Biconical fitting					<b>PD inlet filter and DDp outlet</b>	
1080	1617 9471 00	1	Pipe pdp sensor					<b>filter for Z-compre Yes</b>	
1090	0147 1242 03	2	Hex. head screw					<b>PD inlet filter and DDp outlet</b>	
1100	0301 2321 00	2	Washer					<b>filter for GA Yes</b>	
1110	9740 2001 32	1	Coupling		3010	1624 8601 02	1	Sonic nozzle	
1115	0560 0200 61	1	Elbow		3020	1624 8602 00	1	Flange	
1140	1624 8673 00	1	Cable		3030	0650 1001 14	1	Gasket	
	<b>1617 9655 80</b>	<b>1</b>	<b>Sensor housing</b>		3040	0147 1483 03	8	Bolt	
2010	0663 2129 00	• 1	O-ring		3050	0301 2378 00	16	Washer	
2020	1617 9656 00	• 1	Filter element		3060	0266 2114 00	8	Nut	
2030	1617 9654 00	• 1	Bolt sensor housing						
2040	1617 9653 00	• 1	Sensor housing						

10



73047

73047

## Vortex

10

Ref.	Part number	Qty	Name	Remarks	Ref.	Part number	Qty	Name	Remarks
			<b>High ambient condition</b>						
1010	1089 0504 11	1	Temp. switch		1150	0581 1200 27	2	Pipe coupling	
1020	1088 0155 07	1	Connect.head		1160	0070 6002 06	AR	Plastic tube	
1050	0603 4100 17	1	Hexagon nipple		1170	0581 1200 27	1	Pipe coupling	
1070	9740 2028 44	1	Fitting		1180	1624 8616 00	1	Cooler	
1080	0605 8505 03	2	Bushing		1190	1624 8616 01	1	Duct	
1090	9090 1528 00	1	T coupling		<b>2005</b>	<b>9093 0021 02</b>	<b>1</b>	<b>Midi filter air</b>	
1100	0852 0010 14	1	Ball valve			<b>1624 8352 80</b>	<b>1</b>	<b>Assembly solenoid valve</b>	
1120	0607 2900 08	1	Reducing socket		2010	1089 0641 03	• 1	Valve solenoid	
1140	0605 8508 03	1	Bushing		2020	1624 8352 00	• 1	Strainer	
					2030	0603 4100 36	• 1	Hexagon nipple	

**Notes:**

[illegible]



[illegible]

### Notes:

[illegible]

# **Atlas Copco** Dryers

BD 480

Parts list

What sets Atlas Copco apart as a company is our conviction that we can only excel in what we do if we provide the best possible know-how and technology to really help our customers produce, grow and succeed.

There is a unique way of achieving that - we simply call it the Atlas Copco way. It builds on **interaction**, on long-term relationships and involvement in the customers' process, needs and objectives. It means having the flexibility to adapt to the diverse demands of the people we cater for.

It's the **commitment** to our customers' business that drives our effort towards increasing their productivity through better solutions. It starts with fully supporting existing products and continuously doing things better, but it goes much further, creating advances in technology through **innovation**. Not for the sake of technology, but for the sake of our customer's bottom line and peace-of-mind.

That is how Atlas Copco will strive to remain the first choice, to succeed in attracting new business and to maintain our position as the industry leader.



\* 2 9 3 0 1 6 6 3 0 1 \*