



**FORMULA 18,5 - 22 - 30**

**GENESIS 18,5 - 22**

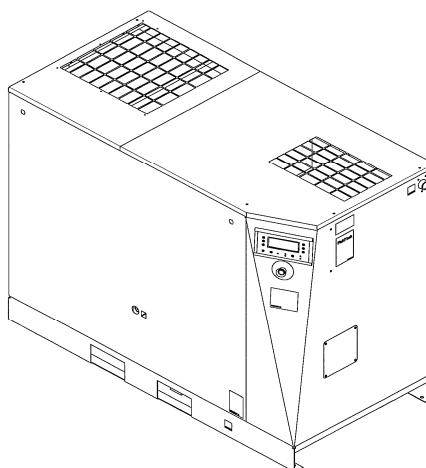
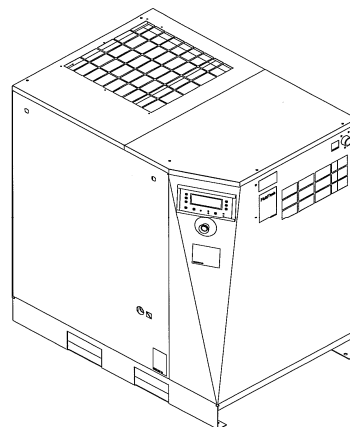
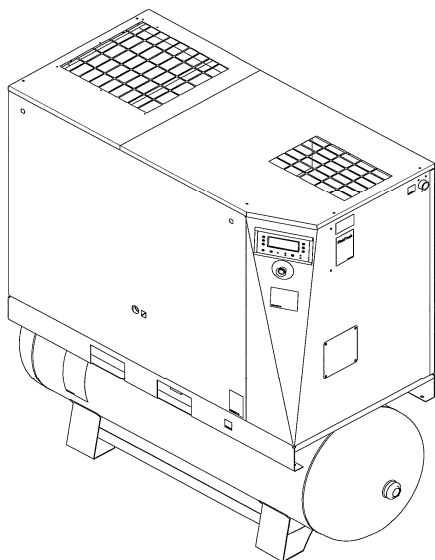
CATALOGO RICAMBI  
SPARES PARTS LIST  
CATALOGUE PIÈCES DÉTACHÉES  
ERSATZTEILKATALOG  
CATÁLOGO DE PIEZAS DE RECAMBIO

Con kit di manutenzione  
With service kit  
Avec kit a maintenance  
Mit Wartungsaufbausatz  
Con kit de mantenimiento

Codice / Code / Code / Kode / Código
<b>2200780007 00</b>
Edizione / Edition / Edition / Ausgabe / Edición
<b>08/2010</b>

**HP 25 - 30 - 40**  
**kW 18,5 - 22 - 30**

COMPRESSORI INDUSTRIALI  
INDUSTRIAL COMPRESSORS  
COMPRESSEURS INDUSTRIELS  
INDUSTRIELLE KOMPRESSOREN  
COMPRESOR INDUSTRIAL



CATALOGO RICAMBI  
SPARES PARTS LIST  
CATALOGUE PIÈCES DÉTACHÉES  
ERSATZTEILKATALOG  
CATÁLOGO DE PIEZAS DE RECAMBIO

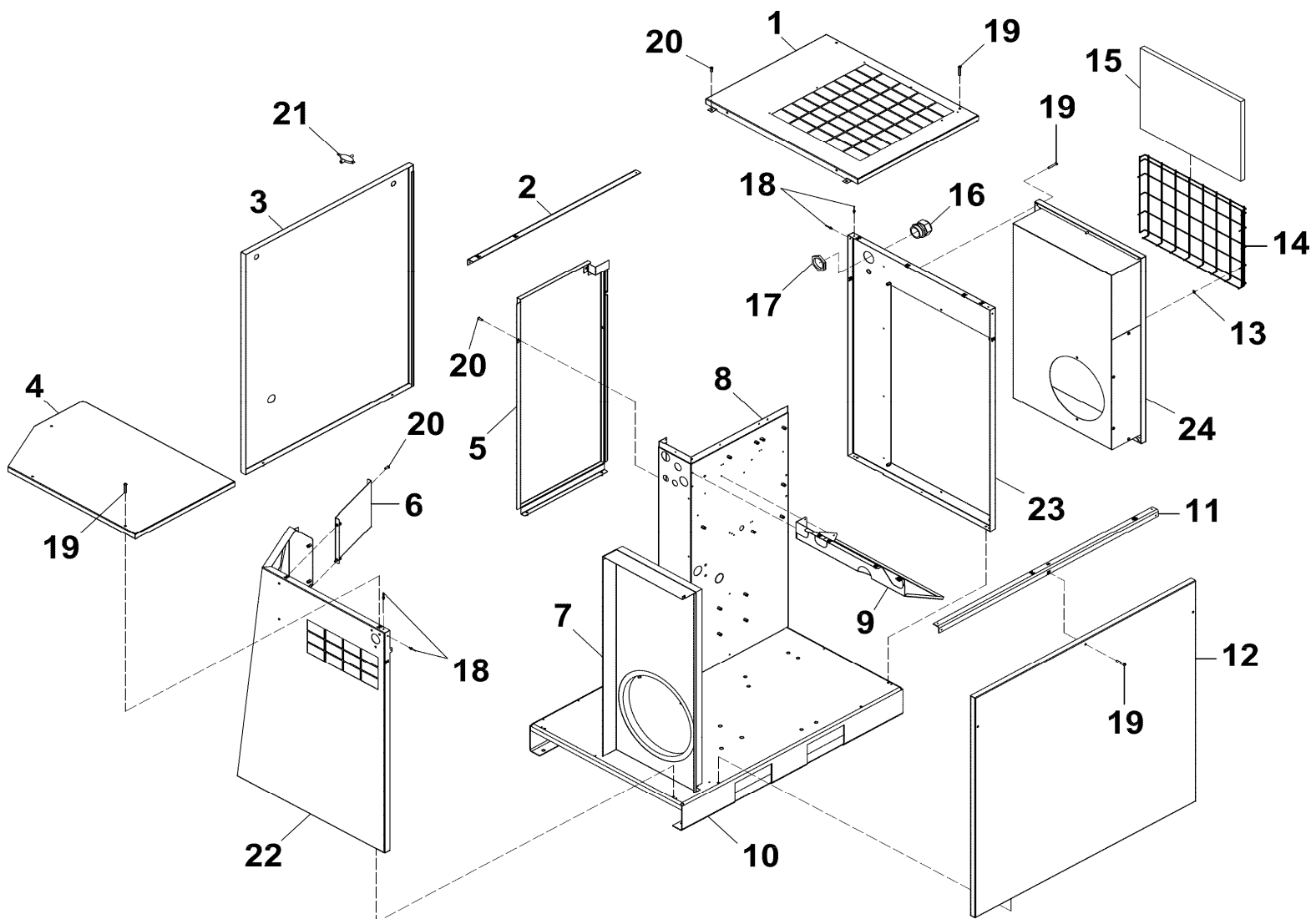
**HP 22 - 30 - 40**  
**kW 18,5 - 22 - 30**

COMPRESSORI INDUSTRIALI - *INDUSTRIAL COMPRESSORS* - COMPRESSEURS INDUSTRIELS - *INDUSTRIELLE KOMPRESSOREN* - COMPRESOR INDUSTRIAL

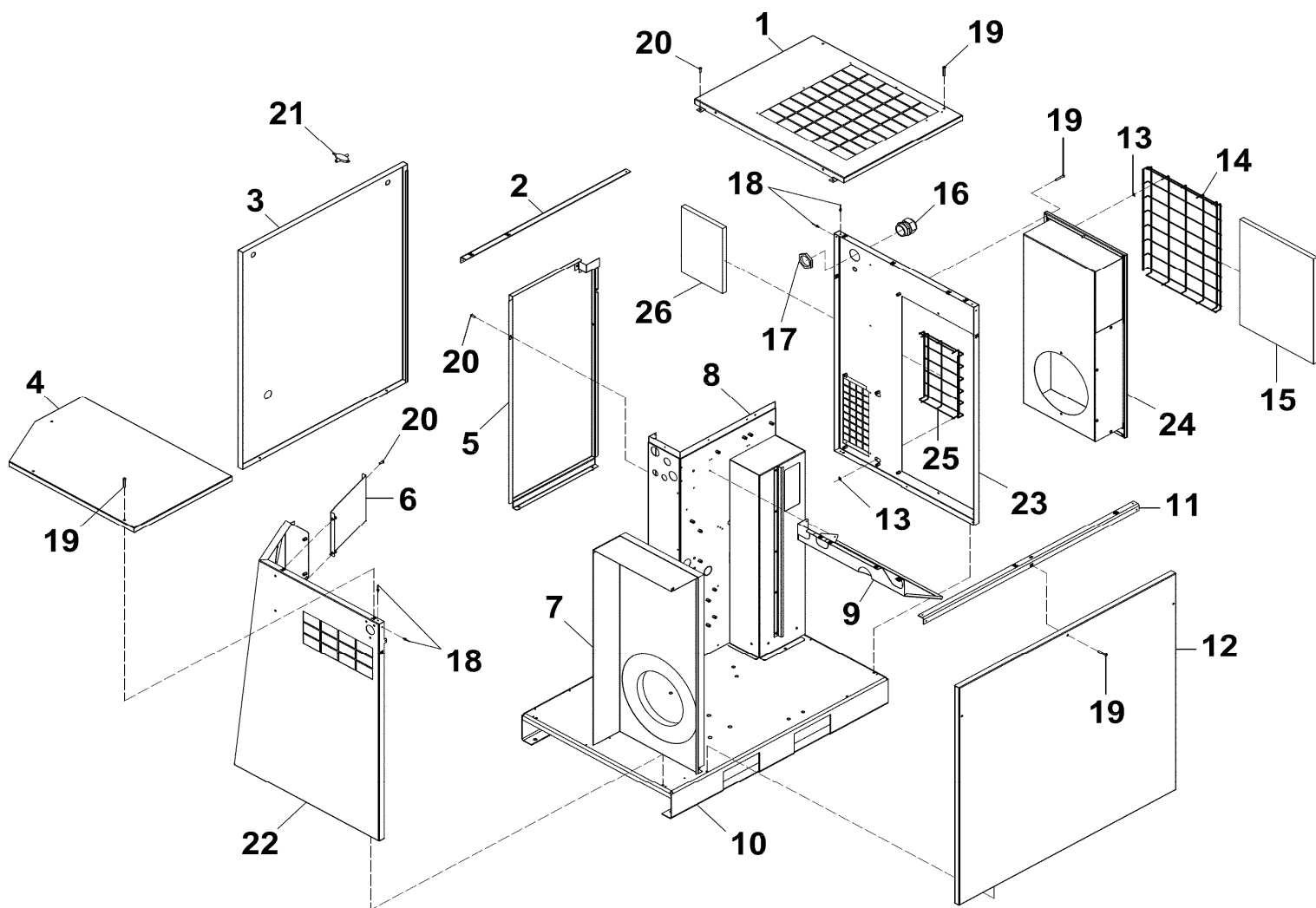
[illegible][illegible]

## This image shows a single sheet of white paper with horizontal ruling lines. The lines are evenly spaced and run across the width of the page. There are no margins, text, or other markings on the paper.

N°TAV. DWG. NR. N°TABLE Nr. GRUPPENSATZ N. TAB.	<b>INDICE - INDEX - TABLE DES MATIERES - INHALTSVERZEICHNIS - INDICE</b>				
	<b>DESCRIZIONE</b>	<b>DESCRIPTION</b>	<b>DÉSIGNATION</b>	<b>BESCHREIBUNG</b>	<b>DESIGNACIÓN</b>
<b>1</b>	CARENATURA - PANNELLI FONO ASSORBENTI	CASING - SOUND DAMPING PANELS	CARENAGE - PANNEAUX INSONORISANTS	STANDER FÜR DIE VERKLEIDUNG AKUSTISCHE PLATTEN	CARENADO - PANELES FONOABSORBENTES
<b>2</b>	CARENATURA - PANNELLI FONO ASSORBENTI	CASING - SOUND DAMPING PANELS	CARENAGE - PANNEAUX INSONORISANTS	STANDER FÜR DIE VERKLEIDUNG AKUSTISCHE PLATTEN	CARENADO - PANELES FONOABSORBENTES
<b>3</b>	CARENATURA - PANNELLI FONO ASSORBENTI	CASING - SOUND DAMPING PANELS	CARENAGE - PANNEAUX INSONORISANTS	STANDER FÜR DIE VERKLEIDUNG AKUSTISCHE PLATTEN	CARENADO - PANELES FONOABSORBENTES
<b>4</b>	CARENATURA - PANNELLI FONO ASSORBENTI	CASING - SOUND DAMPING PANELS	CARENAGE - PANNEAUX INSONORISANTS	STANDER FÜR DIE VERKLEIDUNG AKUSTISCHE PLATTEN	CARENADO - PANELES FONOABSORBENTES
<b>5</b>	REGOLATORE ASPIRAZIONE ARIA	AIR INTAKE REGULATOR	RÉGULATEUR D'ENTRÉE D'AIR	LUFTANSAUGREGLER	REGULADOR DE ASPIRACIÓN DE AIRE
<b>6</b>	SERBATOIO - SEPARATORE ARIA/OLIO	AIR/OIL TANK - SEPARATOR	RÉSERVOIR - SEPARATEUR AIR/HUILE	LUFT/ÖL - BEHÄLTER - ABSCHIEDER	DEPÓSITO DE ACEITE - SEPARADOR AIRE/ACEITE
<b>7</b>	RAFFREDDATORE ARIA-OLIO	AIR-OIL COOLER	REFROIDISSEUR AIR-HUILE	LUFT-ÖL KÜHLER	REFRIGERADOR AIRE-ACEITE
<b>8</b>	FILTRO ARIA - COMPRESSORE A VITE	AIR FILTER - SCREW COMPRESSOR	FILTRE D'AIR - COMPRESSEUR A VIS	LUFTFILTER - SCHRAUBENKOMPRESSOR	FILTRO DE AIRE - COMPRESOR DE TORNILLO
<b>9</b>	STAFFA PORTA MOTORE ELETTRICO COMPRESSORE A VITE - TRASMISSIONE -	SCREW COMPRESSOR AND ELECTRIC MOTOR METAL SUPPORT - TRANSMISSION -	ETRIER SUPPORTE MOTEUR ELECTRIQUE COMPRESSEUR A VIS - TRANSMISSION -	SCHRAUBENKOMPRESSOR-UND ELETROMOTORSTÜZE RIEMENTRIEB -	ESTRIBO SOPORTE MOTOR ELÉCTRICO COMPRESOR DE TORNILLO - TRANSMISIÓN POR CORREA -
<b>10</b>	ESSICCATORE D'ARIA - TUBAZIONI	AIR DRYER - PIPELINES	SECHEUR D'AIR CANALISATIONS	LUFTTROCKNER - ROHRLEITUNGEN	SECADOR DE AIRE - CAÑERÍAS
<b>11</b>	ESSICCAORE D'ARIA - TUBAZIONI - SERBATOIO ARIA	AIR DRYER - PIPELINES - AIR TANK	SECHEUR D'AIR - CANALISATION - RÉSERVOIR D'AIR	LUFTTROCKNER - ROHRLEITUNGEN - LUFTBEHÄLTER	SECADOR DE AIRE - CAÑERÍAS - DEPÓSITO DE AIRE
<b>12</b>	SENSORE DI TEMPERATURA - SENSORE DI PRESSIONE	TEMPERATURE SENSOR - PRESSURE SENSOR	SONDE THERMIQUE - CAPTEUR DE PRESSION	TEMPERATUR SENSOR - DRUCKSENSOR	SENSOR DE TEMPERATURA - SENSOR DE PRESIÓN
<b>13</b>	SENSORE DI TEMPERATURA - SENSORE DI PRESSIONE	TEMPERATURE SENSOR - PRESSURE SENSOR	SONDE THERMIQUE - CAPTEUR DE PRESSION	TEMPERATUR SENSOR - DRUCKSENSOR	SENSOR DE TEMPERATURA - SENSOR DE PRESIÓN
<b>14</b>	ESSICCATORE D'ARIA	AIR DRYER	SECHEUR D'AIR	LUFTTROCKNER	SECADOR DE AIRE
<b>15</b>	TARGHETTE	LABELS	PLAQUE	SCHILD	PLACA
<b>16</b>	KIT DI MANUTENZIONE	SERVICE KITS	KITS DE MAINTENANCE	AUFBAUSATZ DES WARTUNG	KIT DE MANTENIMIENTO

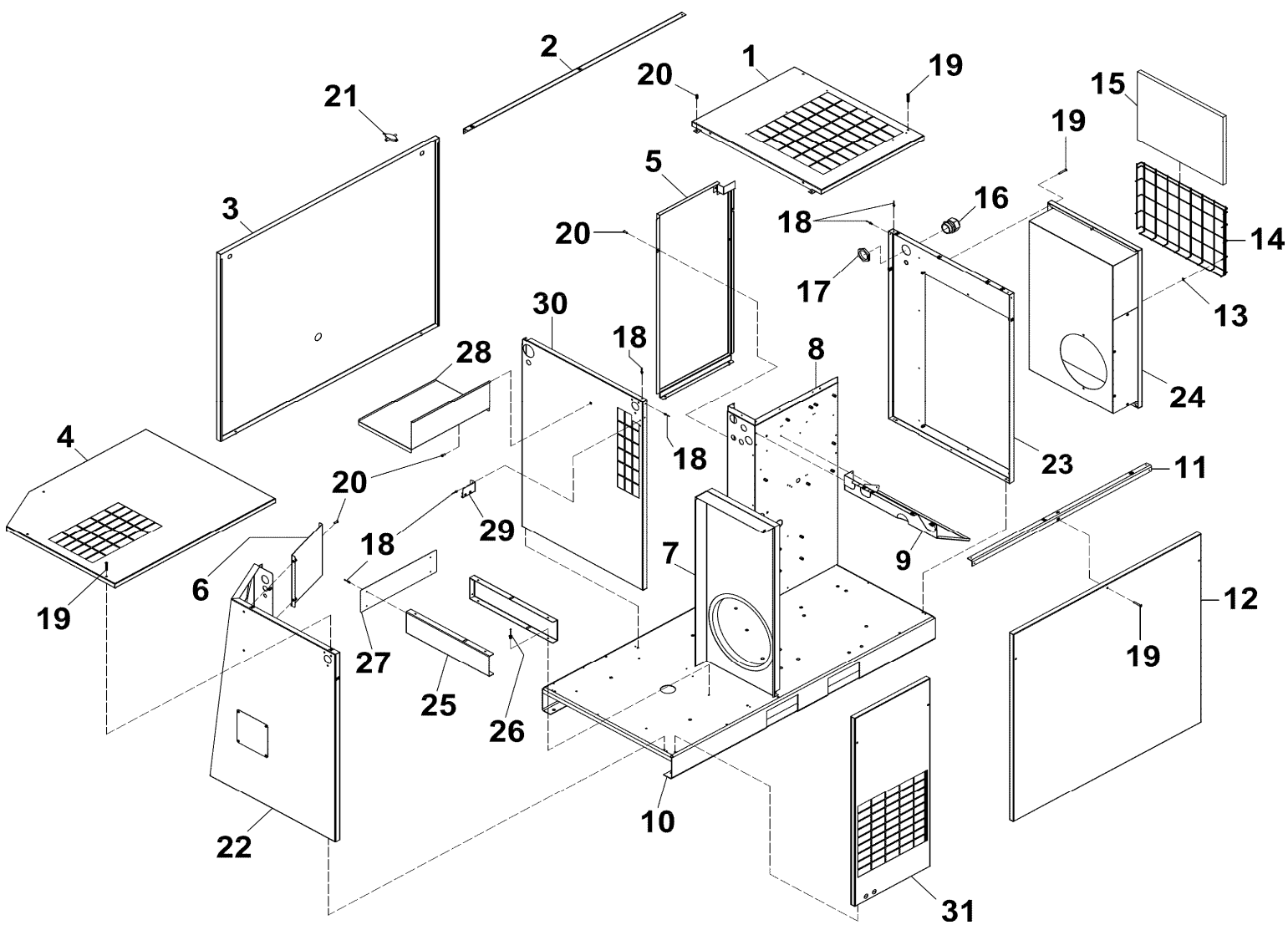


TAB. 1			Q.tà - Qty - Qté - Anz. - Cant.																		Carenatura - Pannelli fono assorbenti    Casing - Sound-damping panels Carenage-panneaux insonorisants    Stander für die Verkleidung akustische Platten    Carenado - Paneles fonoabsorbentes																													
			HP 25 / kW 18,5							HP 30 / kW 22							HP 40 / kW 30																																	
Rif. N. Ref. No Nr. Rêf. Bild Nr. Rif. N.	N. ordinaz. Part. num. Nr. Pièce Teil num. Codigo	Note-Note- Ann.-Nota	4152 0066 00	4152 0066 01	4152 0066 02	4152 0067 10	4152 0067 11	4152 0067 12									4152 0066 09	4152 0066 10	4152 0066 11	4152 0067 19	4152 0067 20	4152 0067 21									4152 0066 18	4152 0066 19	4152 0066 20	4152 0067 28	4152 0067 29	4152 0067 30									DESCRIZIONE - DESCRIPTION - DESIGNATION - BESCHREIBUNG - DESIGNACION					
1	6275 6128 00		1	1	1	1	1	1									1	1	1	1	1	1									1	1	1	1	1	1						PANEL								
2	2202 9511 00		1	1	1	1	1	1									1	1	1	1	1	1									1	1	1	1	1	1						ANGULAR								
3	2202 9506 02		1	1	1	1	1	1									1	1	1	1	1	1									1	1	1	1	1	1						PANEL								
4	2202 9508 02		1	1	1	1	1	1									1	1	1	1	1	1									1	1	1	1	1	1						PANEL								
5	2202 9524 00		1	1	1	1	1	1									1	1	1	1	1	1									1	1	1	1	1	1						PANEL								
6	2202 9629 00		1	1	1	1	1	1									1	1	1	1	1	1									1	1	1	1	1	1						PANEL								
7	6275 6143 10		1	1	1	1	1	1									1	1	1	1	1	1																				PANEL								
7	6275 6144 10																														1	1	1	1	1	1						PANEL								
8	2202 9542 00		1	1	1	1	1	1									1	1	1	1	1	1									1	1	1	1	1	1						PANEL								
9	2202 9509 00		1	1	1	1	1	1									1	1	1	1	1	1									1	1	1	1	1	1					SUPPORT									
10	2202 9502 16		1	1	1	1	1	1									1	1	1	1	1	1									1	1	1	1	1	1					CRANKCASE									
11	2202 9510 00		1	1	1	1	1	1									1	1	1	1	1	1									1	1	1	1	1	1					ANGULAR									
12	2202 9504 02		1	1	1	1	1	1									1	1	1	1	1	1									1	1	1	1	1	1					PANEL									
13	2200 7302 47		4	4	4	4	4	4									4	4	4	4	4	4									4	4	4	4	4	4					PLAQUE									
14	2202 2512 09		1	1	1	1	1	1									1	1	1	1	1	1									1	1	1	1	1	1					GRATING									
15	2202 2512																																																	

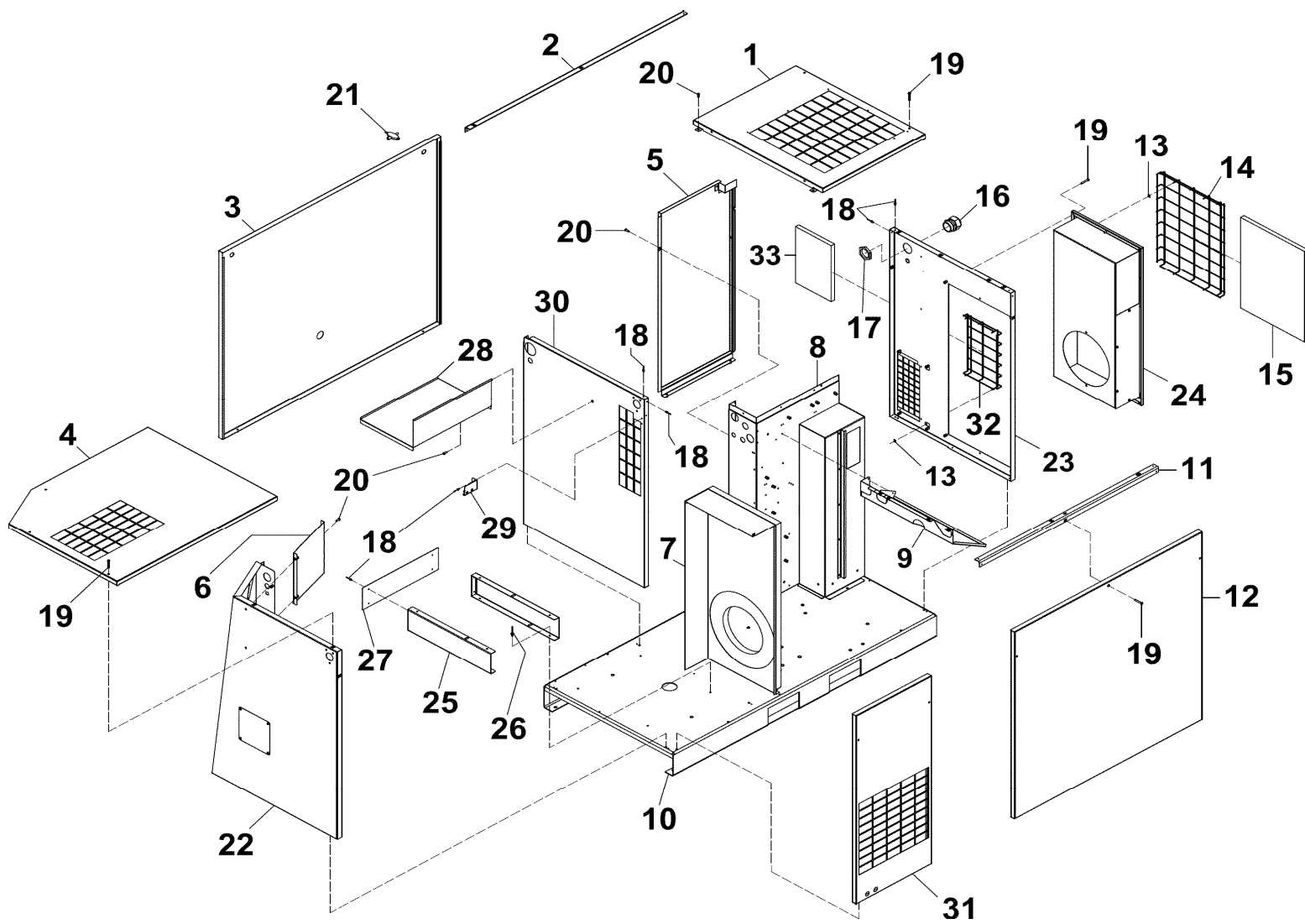


[illegible]

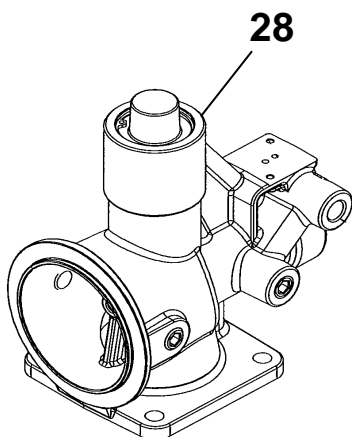
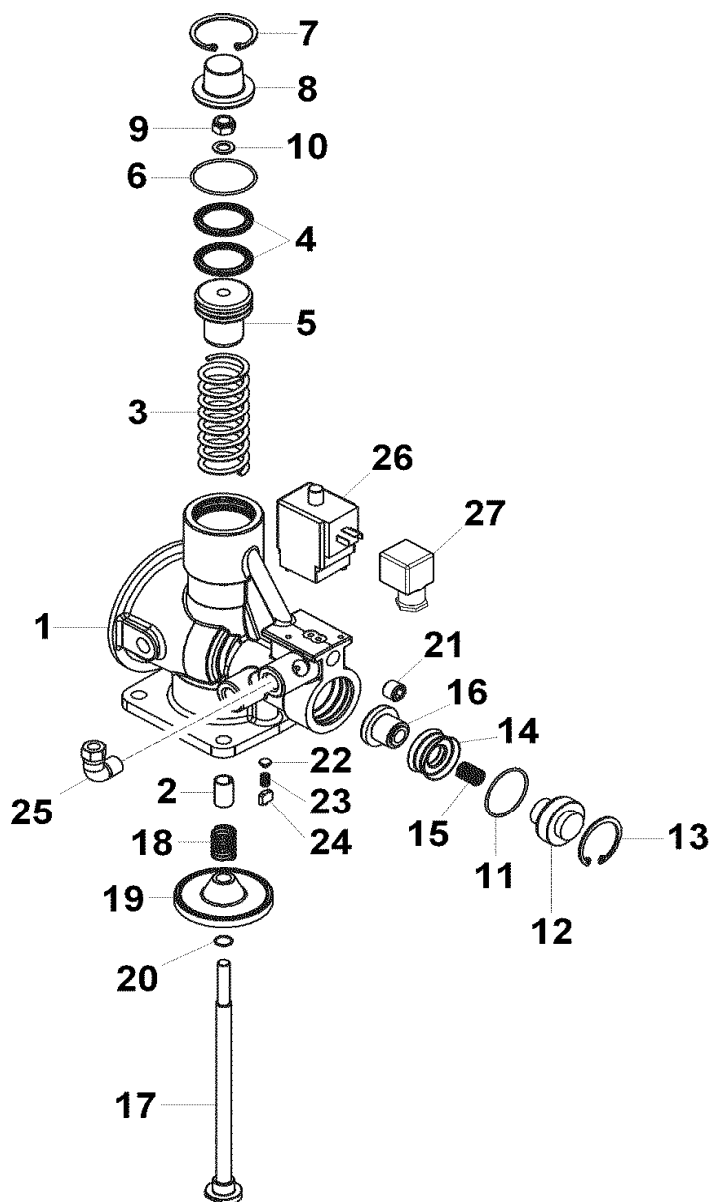




[illegible]



[illegible]

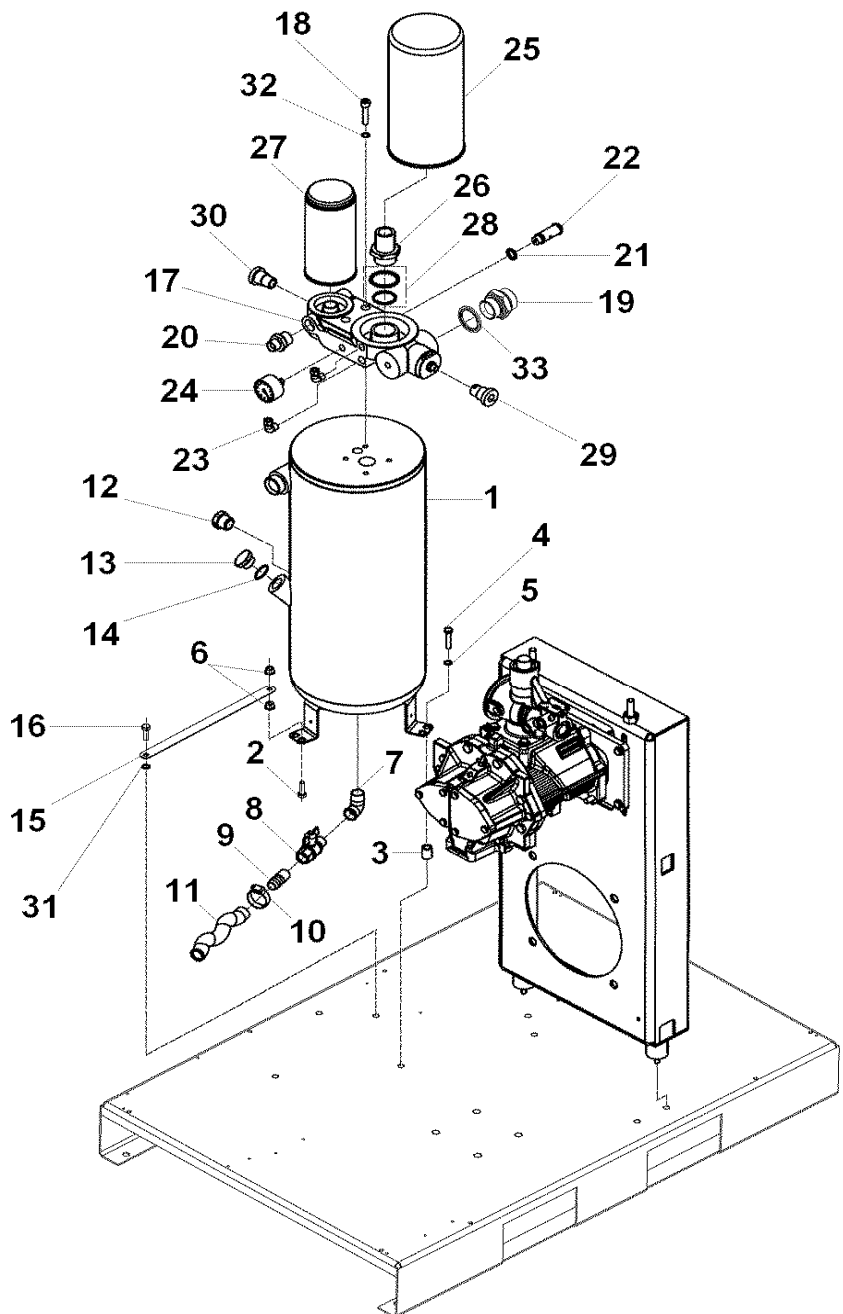


TAB. 5			Q.tà - Qty - Q.té - Anz. - Cant.																								Regolatore aspirazione aria    Air intake regulator Régulateur d'entrée d'air    Luftansaugregler Regulador de aspiración de aire										
			HP 25 / kW 18,5								HP 30 / kW 22												HP 40 / kW 30														
Rif. N. Ref. No Nr. Réf. Bild Nr. Rif. N.	N. ordinaz. Part. num. Nr. Pièce Teil num. Codigo	Nota-Note-Note- Ann.-Nota	4152 0066 00	4152 0066 01	4152 0066 02	4152 0066 03	4152 0066 04	4152 0066 05	4152 0066 06	4152 0066 07	4152 0066 08	4152 0066 09	4152 0066 10	4152 0066 11	4152 0066 12	4152 0066 13	4152 0066 14	4152 0066 15	4152 0066 16	4152 0066 17	4152 0066 21	4152 0066 22	4152 0066 23	4152 0066 24	4152 0066 25	4152 0066 26	4152 0066 18	4152 0066 19	4152 0066 20					DESCRIZIONE - DESCRIPTION - DESIGNATION - BESCHREIBUNG - DESIGNACION			
1	1622 8786 00		1	1	1	1	1	1	1	1	1	1	1	1	1	1	1	1	1	1	1	1	1	1	1	1	1	1	1	1	1	1					BODY VALVE
2	0500 4510 29		1	1	1	1	1	1	1	1	1	1	1	1	1	1	1	1	1	1	1	1	1	1	1	1	1	1	1	1	1	1					BUSHING
3	1613 6800 01		1	1	1	1	1	1	1	1	1	1	1	1	1	1	1	1	1	1	1	1	1	1	1	1	1	1	1	1	1	1					SPRING
4	1613 6969 01		1	1	1	1	1	1	1	1	1	1	1	1	1	1	1	1	1	1	1	1	1	1	1	1	1	1	1	1	1	1					O-RING
5	1613 7031 01		1	1	1	1	1	1	1	1	1	1	1	1	1	1	1	1	1	1	1	1	1	1	1	1	1	1	1	1	1	1					PISTON
6	0663 2105 46		1	1	1	1	1	1	1	1	1	1	1	1	1	1	1	1	1	1	1	1	1	1	1	1	1	1	1	1	1	1					O-RING
7	0335 2140 00		1	1	1	1	1	1	1	1	1	1	1	1	1	1	1	1	1	1	1	1	1	1	1	1	1	1	1	1	1	1					STOP RING
8	1613 6966 00		1	1	1	1	1	1	1	1	1	1	1	1	1	1	1	1	1	1	1	1	1	1	1	1	1	1	1	1	1	1					COVER
9	0266 1110 02		1	1	1	1	1	1	1	1	1	1	1	1	1	1	1	1	1	1	1	1	1	1	1	1	1	1	1	1	1	1					NUT
10	0301 2135 01		1	1	1	1	1	1	1	1	1	1	1	1	1	1	1	1	1	1	1	1	1	1	1	1	1	1	1	1	1	1					O-RING
11	0663 7132 00		1	1	1	1	1	1	1	1	1	1	1	1	1	1	1	1	1	1	1	1	1	1	1	1	1	1	1	1	1	1					O-RING
12	1613 6794 00		1	1	1	1	1	1	1	1	1	1	1	1	1	1	1	1	1	1	1	1	1	1	1	1	1	1	1	1	1	1					COVER
13	0335 2136 00		1	1	1	1	1	1	1	1	1	1	1	1	1	1	1	1	1	1	1	1	1	1	1	1	1	1	1	1	1	1					STOP RING
14	1613 6783 01		1	1	1	1	1	1	1	1	1	1	1	1	1	1	1	1	1	1	1	1	1	1	1	1	1	1	1	1	1	1					PISTON
15	1622 5122 01		1	1	1	1	1	1	1	1	1	1	1	1	1	1	1	1	1	1	1	1	1	1	1	1	1	1	1	1	1	1					SPRING
16	1613 6796 00		1	1	1	1	1	1	1	1	1	1	1	1	1	1	1	1	1	1	1	1	1	1	1	1	1	1	1	1	1	1					PISTON
17	1613 7032 02		1	1	1	1	1	1	1	1	1	1	1	1	1	1	1	1	1	1	1	1	1	1	1	1	1	1	1	1	1	1					ROD
18	1613 6802 01		1	1	1	1	1	1	1	1	1	1	1	1	1	1	1	1	1	1	1	1	1	1	1	1	1	1	1	1	1	1					SPRING
19	1613 7699 02		1	1	1	1	1	1	1	1	1	1	1	1	1	1	1	1	1	1	1	1	1	1	1	1	1	1	1	1	1	1					VALVE
20	0663 2101 85		1	1	1	1	1	1	1	1	1	1	1	1	1	1	1	1	1	1	1	1	1	1	1	1	1	1	1	1	1	1					O-RING
21	0686 3101 18		1	1	1	1	1	1	1	1	1	1	1	1	1	1	1	1	1	1	1	1	1	1	1	1	1	1	1	1	1	1					PLUG
22	1622 5143 00		1	1	1	1	1	1	1	1	1	1	1	1	1	1	1	1	1	1	1	1	1	1	1	1	1	1	1	1	1	1					PLUG
23	1622 5144 00		1	1	1	1	1	1	1	1	1	1	1	1	1	1	1	1	1	1	1	1	1	1	1	1	1	1	1	1	1	1					SPRING
24	1613 7573 00		1	1	1	1	1	1	1	1	1	1	1	1	1	1	1	1	1	1	1	1	1	1	1	1	1	1	1	1	1	1					PLUG
25	6211 9314 00		1	1	1	1	1	1	1	1	1	1	1	1	1	1	1	1	1	1	1	1	1	1	1	1	1	1	1	1	1	1					ELBOW UNION
26	2202 7298 01		1	1	1	1	1	1	1	1	1	1	1	1	1	1	1	1	1	1	1	1	1	1	1	1	1	1	1	1	1	1					SOLENOID VALVE
27	1088 0150 53		1	1	1	1	1	1	1	1	1	1	1	1	1	1	1	1	1	1	1	1	1	1	1	1	1	1	1	1	1	1					CONNECTOR
28	1622 8786 82		1	1	1	1	1	1	1	1	1	1	1	1	1	1	1	1	1	1	1	1	1	1	1	1	1	1	1	1	1	1					UNLOADING VALVE
-	2901 0002 01		1	1	1	1	1	1	1	1	1	1	1	1	1	1	1	1	1	1	1	1	1	1	1	1	1	1	1	1	1	1					KIT UNLOADING VALVE

TAB. 5			Q.tà - Qty - Q.té - Anz. - Cant.																																				Regolatore aspirazione aria    Air intake regulator Régulateur d'entrée d'air    Luftansaugregler Regulador de aspiración de aire					
			HP 25 / kW 18,5								HP 30 / kW 22																HP 40 / kW 30																	
Rif. N. Ref. No Nr. Réf. Bild Nr. Rif. N.	N. ordinaz. Part. num. Nr. Pièce Teil num. Codigo	Nota-Note-Note- Anm.-Nota	4152 0067 10	4152 0067 11	4152 0067 12	4152 0067 13	4152 0067 14	4152 0067 15	4152 0067 16	4152 0067 17	4152 0067 18		4152 0067 19	4152 0067 20	4152 0067 21	4152 0067 22	4152 0067 23	4152 0067 24	4152 0067 25	4152 0067 26	4152 0067 27	4152 0067 31	4152 0067 32	4152 0067 33	4152 0067 34	4152 0067 35	4152 0067 36		4152 0067 28	4152 0067 29	4152 0067 30						DESCRIZIONE - DESCRIPTION - DESIGNATION - BESCHREIBUNG - DESIGNACION							
1	1622 8786 00		1	1	1	1	1	1	1	1	1		1	1	1	1	1	1	1	1	1	1	1	1	1	1	1	1	1	1	1	1	1	1	1						BODY VALVE			
2	0500 4510 29		1	1	1	1	1	1	1	1	1		1	1	1	1	1	1	1	1	1	1	1	1	1	1	1	1	1	1	1	1	1	1	1	1						BUSHING		
3	1613 6800 01		1	1	1	1	1	1	1	1	1		1	1	1	1	1	1	1	1	1	1	1	1	1	1	1	1	1	1	1	1	1	1	1	1						SPRING		
4	1613 6969 01		1	1	1	1	1	1	1	1	1		1	1	1	1	1	1	1	1	1	1	1	1	1	1	1	1	1	1	1	1	1	1	1	1						O-RING		
5	1613 7031 01		1	1	1	1	1	1	1	1	1		1	1	1	1	1	1	1	1	1	1	1	1	1	1	1	1	1	1	1	1	1	1	1	1						PISTON		
6	0663 2105 46		1	1	1	1	1	1	1	1	1		1	1	1	1	1	1	1	1	1	1	1	1	1	1	1	1	1	1	1	1	1	1	1	1						O-RING		
7	0335 2140 00		1	1	1	1	1	1	1	1	1		1	1	1	1	1	1	1	1	1	1	1	1	1	1	1	1	1	1	1	1	1	1	1	1	1						STOP RING	
8	1613 6966 00		1	1	1	1	1	1	1	1	1		1	1	1	1	1	1	1	1	1	1	1	1	1	1	1	1	1	1	1	1	1	1	1	1	1						COVER	
9	0266 1110 02		1	1	1	1	1	1	1	1	1		1	1	1	1	1	1	1	1	1	1	1	1	1	1	1	1	1	1	1	1	1	1	1	1	1	1						NUT
10	0301 2135 01		1	1	1	1	1	1	1	1	1		1	1	1	1	1	1	1	1	1	1	1	1	1	1	1	1	1	1	1	1	1	1	1	1	1	1						O-RING
11	0663 7132 00		1	1	1	1	1	1	1	1	1		1	1	1	1	1	1	1	1	1	1	1	1	1	1	1	1	1	1	1	1	1	1	1	1	1	1						O-RING
12	1613 6794 00		1	1	1	1	1	1	1	1	1		1	1	1	1	1	1	1	1	1	1	1	1	1	1	1	1	1	1	1	1	1	1	1	1	1	1						COVER
13	0335 2136 00		1	1	1	1	1	1	1	1	1		1	1	1	1	1	1	1	1	1	1	1	1	1	1	1	1	1	1	1	1	1	1	1	1	1	1						STOP RING
14	1613 6783 01		1	1	1	1	1	1	1	1	1		1	1	1	1	1	1	1	1	1	1	1	1	1	1	1	1	1	1	1	1	1	1	1	1	1	1						PISTON
15	1622 5122 01		1	1	1	1	1	1	1	1	1		1	1	1	1	1	1	1	1	1	1	1	1	1	1	1	1	1	1	1	1	1	1	1	1	1	1						SPRING
16	1613 6796 00		1	1	1	1	1	1	1	1	1		1	1	1	1	1	1	1	1	1	1	1	1	1	1	1	1	1	1	1	1	1	1	1	1	1	1						PISTON
17	1613 7032 02		1	1	1	1	1	1	1	1	1		1	1	1	1	1	1	1	1	1	1	1	1	1	1	1	1	1	1	1	1	1	1	1	1	1	1						ROD
18	1613 6802 01		1	1	1	1	1	1	1	1	1		1	1	1	1	1	1	1	1	1	1	1	1	1	1	1	1	1	1	1	1	1	1	1	1	1	1						SPRING
19	1613 7699 02		1	1	1	1	1	1	1	1	1		1	1	1	1	1	1	1	1	1	1	1	1	1	1	1	1	1	1	1	1	1	1	1	1	1	1						VALVE
20	0663 2101 85		1	1	1	1	1	1	1	1	1		1	1	1	1	1	1	1	1	1	1	1	1	1	1	1	1	1	1	1	1	1	1	1	1	1	1						O-RING
21	0686 3101 18		1	1	1	1	1	1	1	1	1		1	1	1	1	1	1	1	1	1	1	1	1	1	1	1	1	1	1	1	1	1	1	1	1	1	1						PLUG
22	1622 5143 00		1	1	1	1	1	1	1	1	1		1	1	1	1	1	1	1	1	1	1	1	1	1	1	1	1	1	1	1	1	1	1	1	1	1	1						PLUG
23	1622 5144 00		1	1	1	1	1	1	1	1	1		1	1	1	1	1	1	1	1	1	1	1	1	1	1	1	1	1	1	1	1	1	1	1	1	1	1						SPRING
24	1613 7573 00		1	1	1	1	1	1	1	1	1		1	1	1	1	1	1	1	1	1	1	1	1	1	1	1	1	1	1	1	1	1	1	1	1	1	1						PLUG
25	6211 9314 00		1	1	1	1	1	1	1	1	1		1	1	1	1	1	1	1	1	1	1	1	1	1	1	1	1	1	1	1	1	1	1	1	1	1	1						ELBOW UNION
26	2202 7298 01		1	1	1	1	1	1	1	1	1		1	1	1	1	1	1	1	1	1	1	1	1	1	1	1	1	1	1	1	1	1	1	1	1	1	1						SOLENOID VALVE
27	1088 0150 53		1	1	1	1	1	1	1	1	1		1	1	1	1	1	1	1	1	1	1	1	1	1	1	1	1	1	1	1	1	1	1	1	1	1	1						CONNECTOR
28	1622 8786 82		1	1	1	1	1	1	1	1	1		1	1	1	1	1	1	1	1	1	1	1	1	1	1	1	1	1	1	1	1	1	1	1	1	1	1						UNLOADING VALVE
-	2901 0002 01		1	1	1	1	1	1	1	1	1		1	1	1	1	1	1	1	1	1	1	1	1	1	1	1	1	1	1	1	1	1	1	1	1	1	1						KIT UNLOADING VALVE
																																						</						



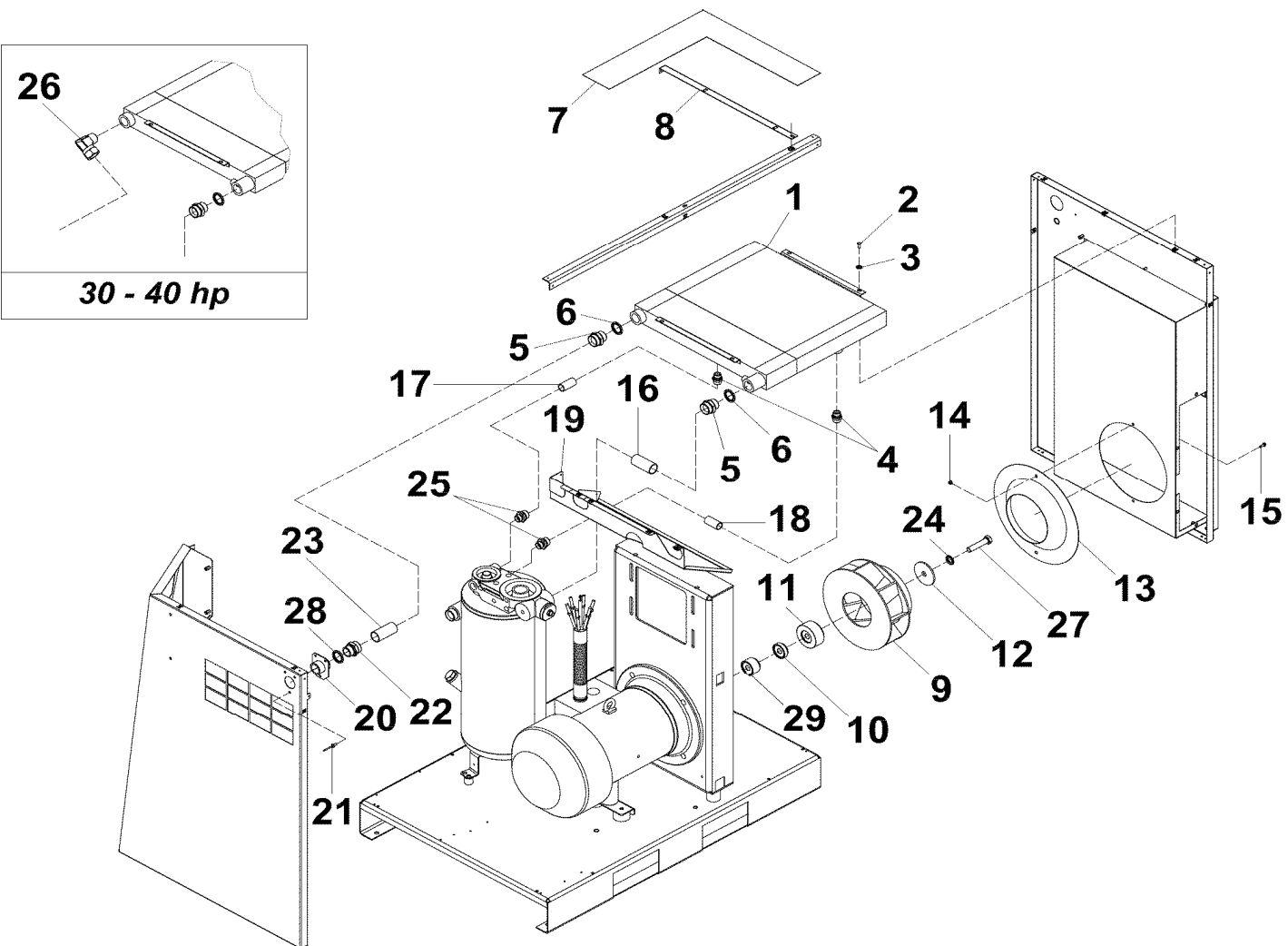




[illegible]

TAB. 6			Q.tà - Qty - Q.té - Anz. - Cant.																												Serbatoio-separatore aria/olio    Réservoir-separateur air/huile / Air/oil tank-separator / Réservoir-separateur air/huile / Luft/Öl Behälter-Abscheider / Depósito de aceite separador aire/aceite						
			HP 25 / kW 18,5								HP 30 / kW 22																HP 40 / kW 30										
Rif. N. Ref. No Nr. Réf. Bild Nr. Rif. N.	N. ordinaz. Part. num. Nr. Pièce Teil num. Codigo	Nota-Note- Amm.-Nota	4152 0067 10	4152 0067 11	4152 0067 12	4152 0067 13	4152 0067 14	4152 0067 15	4152 0067 16	4152 0067 17	4152 0067 18	4152 0067 19	4152 0067 20	4152 0067 21	4152 0067 22	4152 0067 23	4152 0067 24	4152 0067 25	4152 0067 26	4152 0067 27	4152 0067 31	4152 0067 32	4152 0067 33	4152 0067 34	4152 0067 35	4152 0067 36	4152 0067 28	4152 0067 29	4152 0067 30					DESCRIZIONE - DESCRIPTION - DESIGNATION - BESCHREIBUNG - DESIGNACION			
1	6215 0373 15		1	1	1	1	1	1	1	1	1	1	1	1	1	1	1	1	1	1	1	1	1	1	1	1	1	1	1	1	1	1					OIL TANK
2	0147 1325 03		1	1	1	1	1	1	1	1	1	1	1	1	1	1	1	1	1	1	1	1	1	1	1	1	1	1	1	1	1	1					SCREW
3	2202 9326 00		3	3	3	3	3	3	3	3	3	3	3	3	3	3	3	3	3	3	3	3	3	3	3	3	3	3	3	3	3	3					SPACER
4	0147 1325 03		3	3	3	3	3	3	3	3	3	3	3	3	3	3	3	3	3	3	3	3	3	3	3	3	3	3	3	3	3	3					SCREW
5	6210 0364 00		3	3	3	3	3	3	3	3	3	3	3	3	3	3	3	3	3	3	3	3	3	3	3	3	3	3	3	3	3	3					WASHER
6	0291 1185 30		2	2	2	2	2	2	2	2	2	2	2	2	2	2	2	2	2	2	2	2	2	2	2	2	2	2	2	2	2	2					NUT
7	0560 1305 03		1	1	1	1	1	1	1	1	1	1	1	1	1	1	1	1	1	1	1	1	1	1	1	1	1	1	1	1	1	1					ELBOW UNION
8	2200 7601 07		1	1	1	1	1	1	1	1	1	1	1	1	1	1	1	1	1	1	1	1	1	1	1	1	1	1	1	1	1	1					DRAIN COCK
9	2200 7513 22		1	1	1	1	1	1	1	1	1	1	1	1	1	1	1	1	1	1	1	1	1	1	1	1	1	1	1	1	1	1					NIPPLE
10	0347 6109 00		1	1	1	1	1	1	1	1	1	1	1	1	1	1	1	1	1	1	1	1	1	1	1	1	1	1	1	1	1	1					CLAMP
11	2200 6503 40		1	1	1	1	1	1	1	1	1	1	1	1	1	1	1	1	1	1	1	1	1	1	1	1	1	1	1	1	1	1					HOSE (IN METERS)
12	2200 7599 10		1	1	1	1	1	1	1	1	1	1	1	1	1	1	1	1	1	1	1	1	1	1	1	1	1	1	1	1	1	1					OIL GAUGE
13	2202 2124 21		1	1	1	1	1	1	1	1	1	1	1	1	1	1	1	1	1	1	1	1	1	1	1	1	1	1	1	1	1	1					PLUG
14	0663 2105 90		1	1	1	1	1	1	1	1	1	1	1	1	1	1	1	1	1	1	1	1	1	1	1	1	1	1	1	1	1	1					O-RING
15	1089 9562 11		1	1	1																																



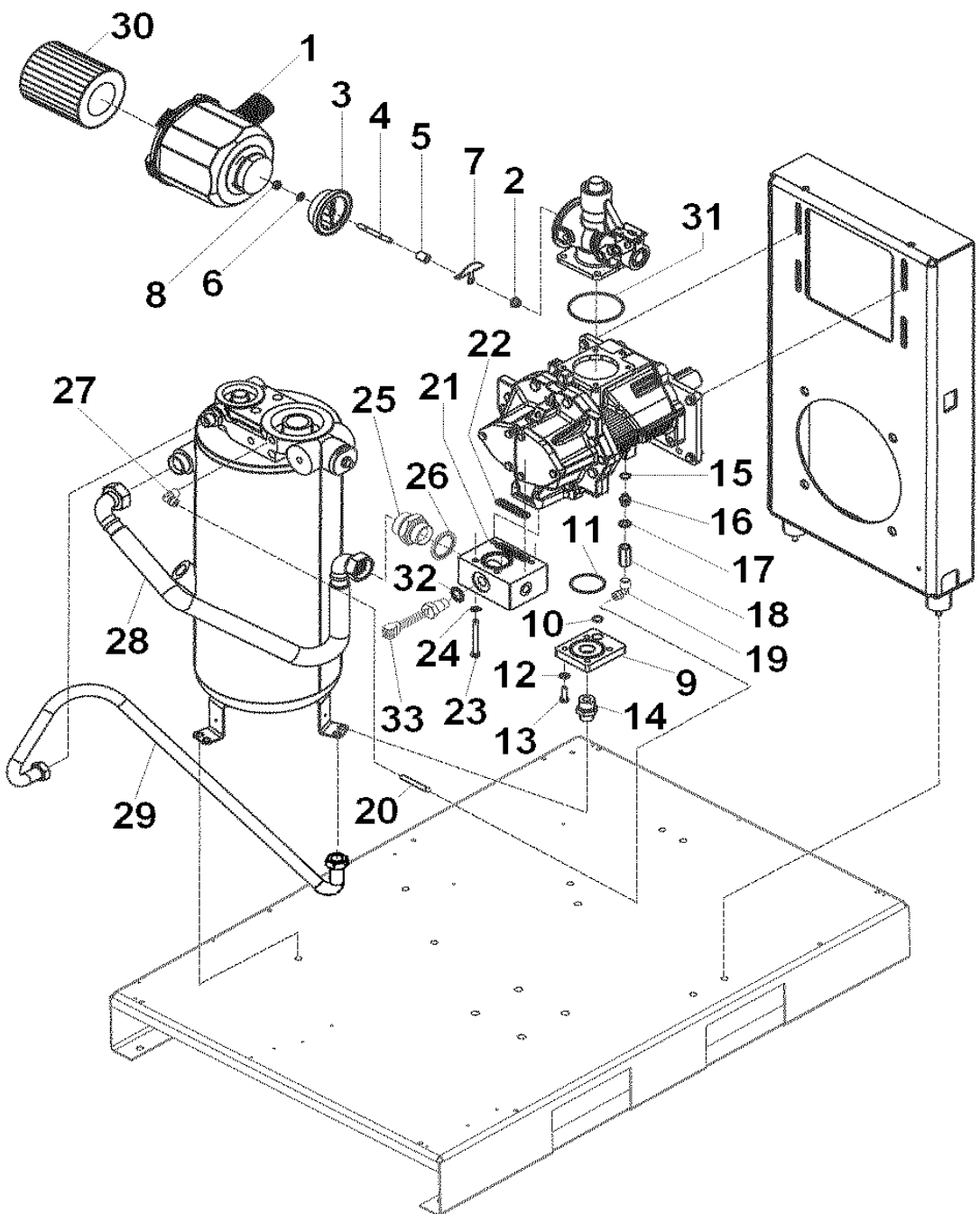


[illegible]

[illegible]



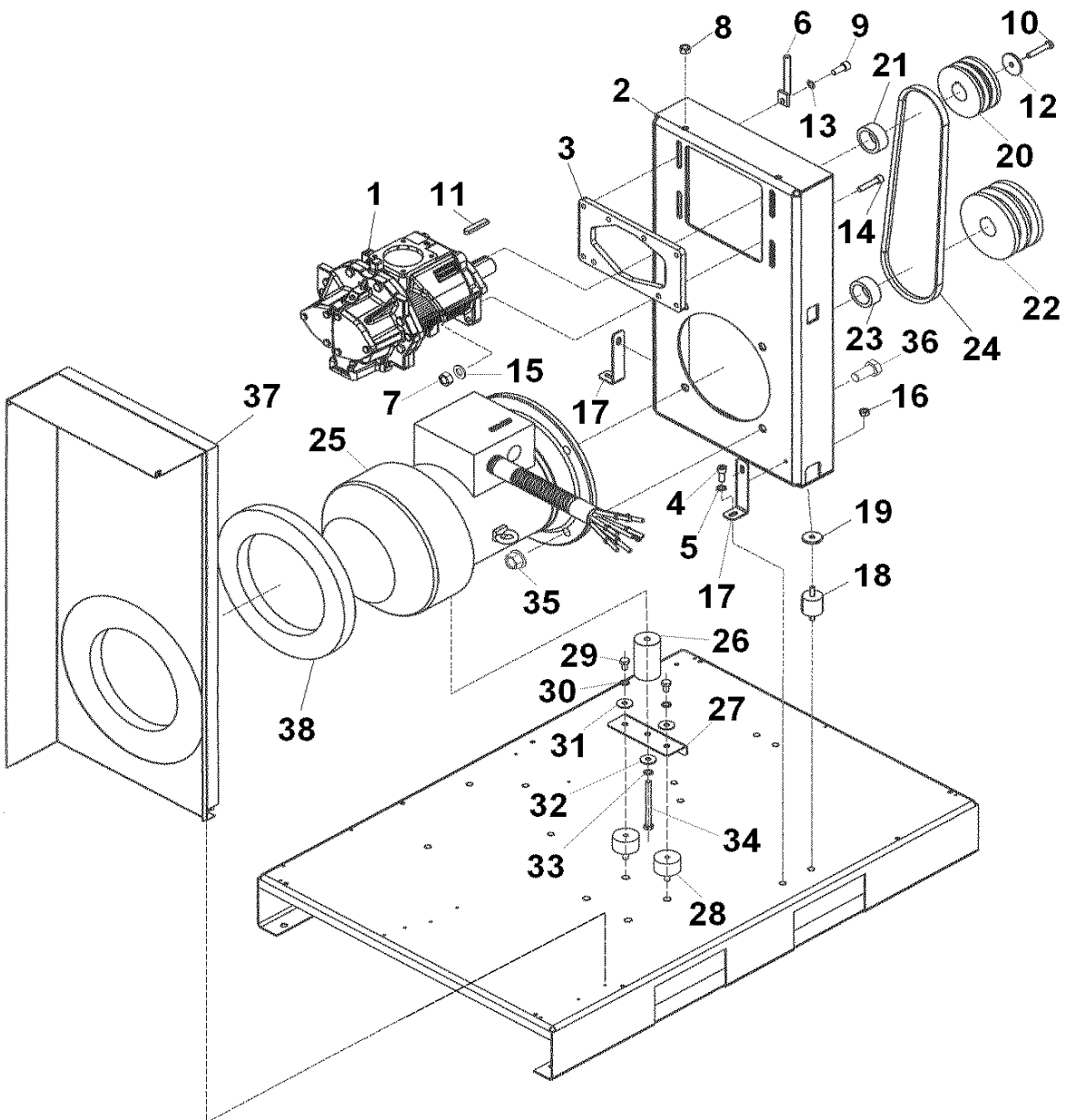






[illegible]





TAB. 9			Q.tà - Qty - Q.té - Anz. - Cant.																								Staffa porta motore elettrico compressore a vite - Trasmissione / Screw compressor and electric motor metal support-Transmission / Étrier supporte moteur électrique compresseur a vis - Transmission / Schraubenkompressor-und Elektromotorstütze Riementrieb / Estribo soporte motor eléctrico compresor de tornillo - Transmisión por											
			HP 25 / kW 18,5								HP 30 / kW 22												HP 40 / kW 30															
Rif. N. Ref. No Nr. Réf. Bild Nr. Rif. N.	N. ordinaz. Part. num. Nr. Pièce Teil num. Codigo	Note-Note- Ann.-Nota	4152 0066 00	4152 0066 01	4152 0066 02	4152 0066 03	4152 0066 04	4152 0066 05	4152 0066 06	4152 0066 07	4152 0066 08	4152 0066 09	4152 0066 10	4152 0066 11	4152 0066 12	4152 0066 13	4152 0066 14	4152 0066 15	4152 0066 16	4152 0066 17	4152 0066 21	4152 0066 22	4152 0066 23	4152 0066 24	4152 0066 25	4152 0066 26	4152 0066 18	4152 0066 19	4152 0066 20	DESCRIZIONE - DESCRIPTION - DESIGNATION - BESCHREIBUNG - DESIGNACION								
1	2989 0154 01		1	1	1	1	1	1	1	1	1	1	1	1	1	1	1	1	1	1	1	1	1	1	1	1	1	1	1	1	1	1	COMPRESSOR					
2	6245 3418 19		1	1	1	1	1	1	1	1	1	1	1	1	1	1	1	1	1	1	1	1	1	1	1	1	1	1	1	1	1	1	SUPPORT MOTOR					
3	2202 2600 34		1	1	1	1	1	1	1	1	1	1	1	1	1	1	1	1	1	1	1	1	1	1	1	1	1	1	1	1	1	1	FLANGE SUPPORT COMPRESSOR					
4	0147 1325 03		4	4	4	4	4	4	4	4	4	4	4	4	4	4	4	4	4	4	4	4	4	4	4	4	4	4	4	4	4	4	SCREW					
5	2202 9045 01		4	4	4	4	4	4	4	4	4	4	4	4	4	4	4	4	4	4	4	4	4	4	4	4	4	4	4	4	4	4	WASHER					
6	2202 2600 63		2	2	2	2	2	2	2	2	2	2	2	2	2	2	2	2	2	2	2	2	2	2	2	2	2	2	2	2	2	2	TIE ROD					
7	0266 2111 00		2	2	2	2	2	2	2	2	2	2	2	2	2	2	2	2	2	2	2	2	2	2	2	2	2	2	2	2	2	2	NUT					
8	0266 2112 00		4	4	4	4	4	4	4	4	4	4	4	4	4	4	4	4	4	4	4	4	4	4	4	4	4	4	4	4	4	4	NUT					
9	0211 1362 00		6	6	6	6	6	6	6	6	6	6	6	6	6	6	6	6	6	6	6	6	6	6	6	6	6	6	6	6	6	6	SCREW					
10	0147 1367 03		1	1	1	1	1	1	1	1	1	1	1	1	1	1	1	1	1	1	1	1	1	1	1	1	1	1	1	1	1	1	SCREW					
11	0337 6064 00		1	1	1	1	1	1	1	1	1	1	1	1	1	1	1	1	1	1	1	1	1	1	1	1	1	1	1	1	1	1	PARALLEL KEY					
11	0337 0009 42																				1	1	1	1	1	1	1	1	1	1	1	1	PARALLEL KEY					
12	1513 0036 03		1	1	1	1	1	1	1	1	1	1	1	1	1	1	1	1	1	1	1	1	1	1	1	1	1	1	1	1	1	1	WASHER					
13	6210 0364 00		6	6	6	6	6	6	6	6	6	6	6	6	6	6	6	6	6	6	6	6	6	6	6	6	6	6	6	6	6	6	WASHER					
14	0211 1366 03		2	2	2	2	2	2	2	2	2	2	2	2	2	2	2	2	2	2	2	2	2	2	2	2	2	2	2	2	2	2	2	SCREW				
15	6210 0364 00		2	2	2	2	2	2	2	2	2	2	2	2	2	2	2	2	2	2	2	2	2	2	2	2	2	2	2	2	2	2	2	WASHER				
16	0291 1185 30		2	2	2	2	2	2	2	2	2	2	2	2	2	2	2	2	2	2	2	2	2	2	2	2	2	2	2	2	2	2	2	NUT				
17	6224 4313 00		2	2	2	2	2	2	2	2	2	2	2	2	2	2	2	2	2	2	2	2	2	2	2	2	2	2	2	2	2	2	2	SUPPORT				
18	0392 1100 44		2	2	2	2	2	2	2	2	2	2	2	2	2	2	2	2	2	2	2	2	2	2	2	2	2	2	2	2	2	2	2	PUFFER				
19	2200 7225 16		2	2	2	2	2	2	2	2	2	2	2	2	2	2	2	2	2	2	2	2	2	2	2	2	2	2	2	2	2	2	2	WASHER				
20	6224 1829 00		1		1	1		1	1		1	1	1	1	1	1	1	1	1	1	1	1	1	1	1	1	1	1	1	1	1	1	1	PULLEY				
20	6224 1811 00			1			1			1																								PULLEY				
20	2202 7299 17																												1	1			1	PULLEY				
21	6224 1621 00		1	1	1	1	1	1	1	1	1	1	1	1	1	1	1	1	1	1	1	1	1	1	1	1	1	1	1	1	1	1	1	SPACER				
22	6224 1814 00		1			1			1																						1			PULLEY				
22	6224 1815 00			1			1			1																								PULLEY				
22	6224 1807 00				1			1			1																							PULLEY				
22	6224 1692 00											1			1		1											1						PULLEY				
22	2202 7299 18												1			1		1		1		1		1		1								PULLEY				
22	6224 1688 00													1			1		1		1		1		1		1							PULLEY				
22	6224 1703 00																												1					PULLEY				
23	6244 1701 00		1	1	1	1	1	1	1	1	1	1		1	1		1	1		1		1		1		1		1						SPACER				
23	6224 1827 00																												1	1	1				SPACER			
24	2200 6605 35		3			3			3																										BELT			
24	2200 6605 22			3			3			3																									BELT			
24	2200 6604 07				3			3			3																								BELT			
24	6214 6223 00											3			3		3		3		3		3		3		3							BELT				
24	6214 6165 00												3			3		3		3		3		3		3		3						BELT				
24	2200 6605 22													3			3		3		3		3		3		3							BELT				
24	6214 6223 00																											3							BELT			
24	6214 6165 00																												3						BELT			
24	2200 6605 35																													3					BELT			
25	6216 1588 00		1	1	1	1	1	1	1	1	1																								ELECTRIC MOTOR			
25	6226 1602 00											1	1	1	1	1	1	1	1	1															ELECTRIC MOTOR			
25	6216 1699 00																												1	1	1				ELECTRIC MOTOR			
25	6216 1649 00																				1	1	1	1	1	1	1								ELECTRIC MOTOR			

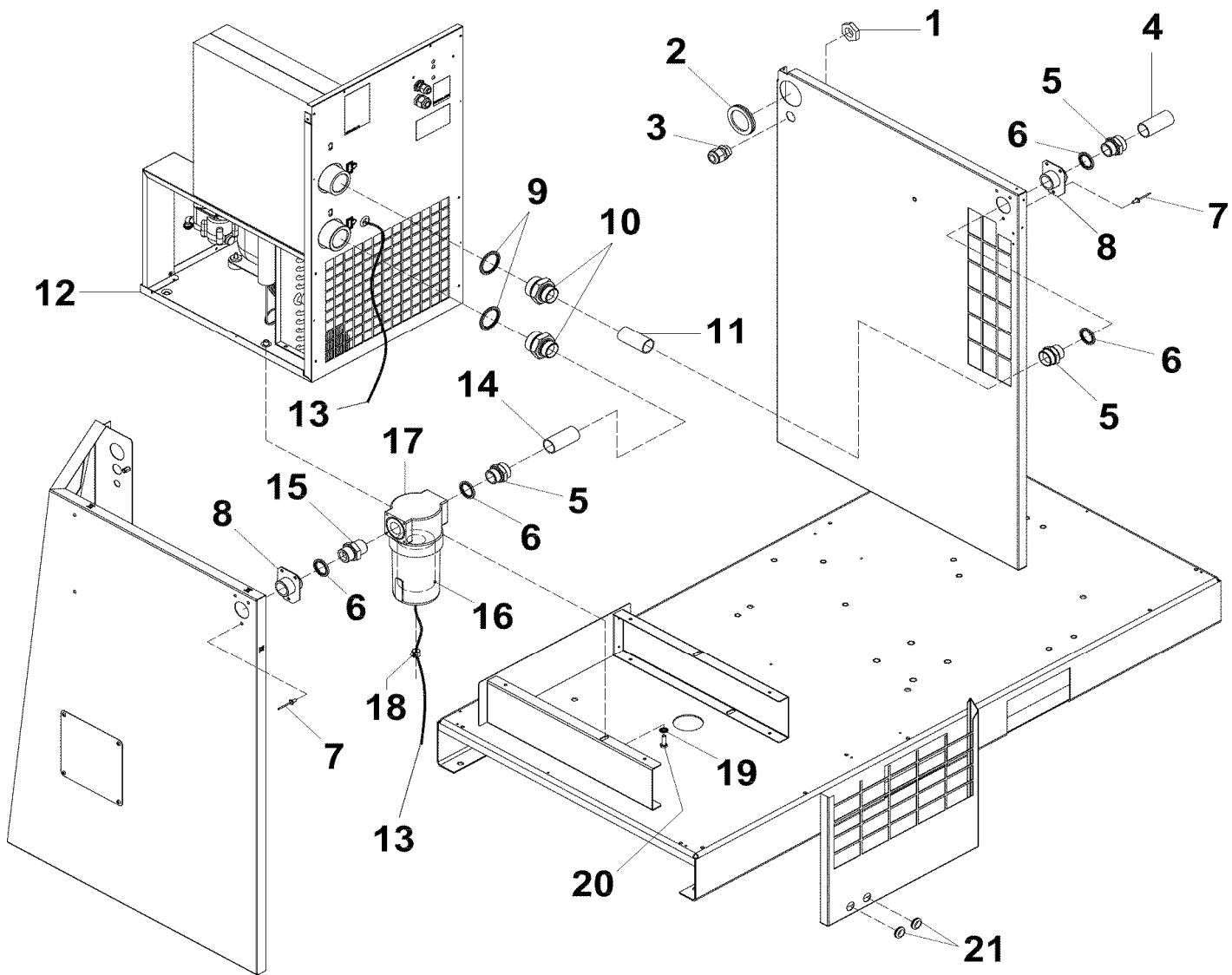


TAB. 9			Q.tà - Qty - Q.té - Anz. - Cant.																											Staffa porta motore elettrico compressore a vite - Trasmissione / Screw compressor and electric motor metal support-Transmission / Étrier supporte moteur électrique compresseur a vis - Transmission / Schraubenkompressor-und Eletromotorstütze Riemetrieb / Estribo soporte motor eléctrico compresor de tornillo - Transmisión por								
			HP 25 / kW 18,5								HP 30 / kW 22																HP 40 / kW 30											
Rif. N. Ref. No Nr. Réf. Bild Nr. Rif. N.	N. ordinaz. Part. num. Nr. Pièce Teil num. Codigo	Note-Note- Anm.-Nota	4152 0067 10	4152 0067 11	4152 0067 12	4152 0067 13	4152 0067 14	4152 0067 15	4152 0067 16	4152 0067 17	4152 0067 18	4152 0067 19	4152 0067 20	4152 0067 21	4152 0067 22	4152 0067 23	4152 0067 24	4152 0067 25	4152 0067 26	4152 0067 27	4152 0067 31	4152 0067 32	4152 0067 33	4152 0067 34	4152 0067 35	4152 0067 36	4152 0067 28	4152 0067 29	4152 0067 30					DESCRIZIONE - DESCRIPTION - DESIGNATION - BESCHREIBUNG - DESIGNACION				
1	2989 0154 01		1	1	1	1	1	1	1	1	1	1	1	1	1	1	1	1	1	1	1	1	1	1	1	1	1	1	1	1	1	1					COMPRESSOR	
2	6245 3418 19		1	1	1	1	1	1	1	1	1	1	1	1	1	1	1	1	1	1	1	1	1	1	1	1	1	1	1	1	1	1					SUPPORT MOTOR	
3	2202 2600 34		1	1	1	1	1	1	1	1	1	1	1	1	1	1	1	1	1	1	1	1	1	1	1	1	1	1	1	1	1	1					FLANGE SUPPORT COMPRESSOR	
4	0147 1325 03		4	4	4	4	4	4	4	4	4	4	4	4	4	4	4	4	4	4	4	4	4	4	4	4	4	4	4	4	4	4					SCREW	
5	2202 9045 01		4	4	4	4	4	4	4	4	4	4	4	4	4	4	4	4	4	4	4	4	4	4	4	4	4	4	4	4	4	4	4					WASHER
6	2202 2600 63		2	2	2	2	2	2	2	2	2	2	2	2	2	2	2	2	2	2	2	2	2	2	2	2	2	2	2	2	2	2	2					TIE ROD
7	0266 2111 00		2	2	2	2	2	2	2	2	2	2	2	2	2	2	2	2	2	2	2	2	2	2	2	2	2	2	2	2	2	2	2					NUT
8	0266 2112 00		4	4	4	4	4	4	4	4	4	4	4	4	4	4	4	4	4	4	4	4	4	4	4	4	4	4	4	4	4	4	4					NUT
9	0211 1362 00		6	6	6	6	6	6	6	6	6	6	6	6	6	6	6	6	6	6	6	6	6	6	6	6	6	6	6	6	6	6	6					SCREW
10	0147 1367 03		1	1	1	1	1	1	1	1	1	1	1	1	1	1	1	1	1	1	1	1	1	1	1	1	1	1	1	1	1	1	1					SCREW
11	0337 6064 00		1	1	1	1	1	1	1	1	1	1	1	1	1	1	1	1	1	1	1																PARALLEL KEY	
11	0337 0009 42																					1	1	1	1	1	1										PARALLEL KEY	
12	1513 0036 03		1	1	1	1	1	1	1	1	1	1	1	1	1	1	1	1	1	1	1	1	1	1	1	1	1	1	1	1	1	1	1					WASHER
13	6210 0364 00		6	6	6	6	6	6	6	6	6	6	6	6	6	6	6	6	6	6	6	6	6	6	6	6	6	6	6	6	6	6	6					WASHER
14	0211 1366 03		2	2	2	2	2																															

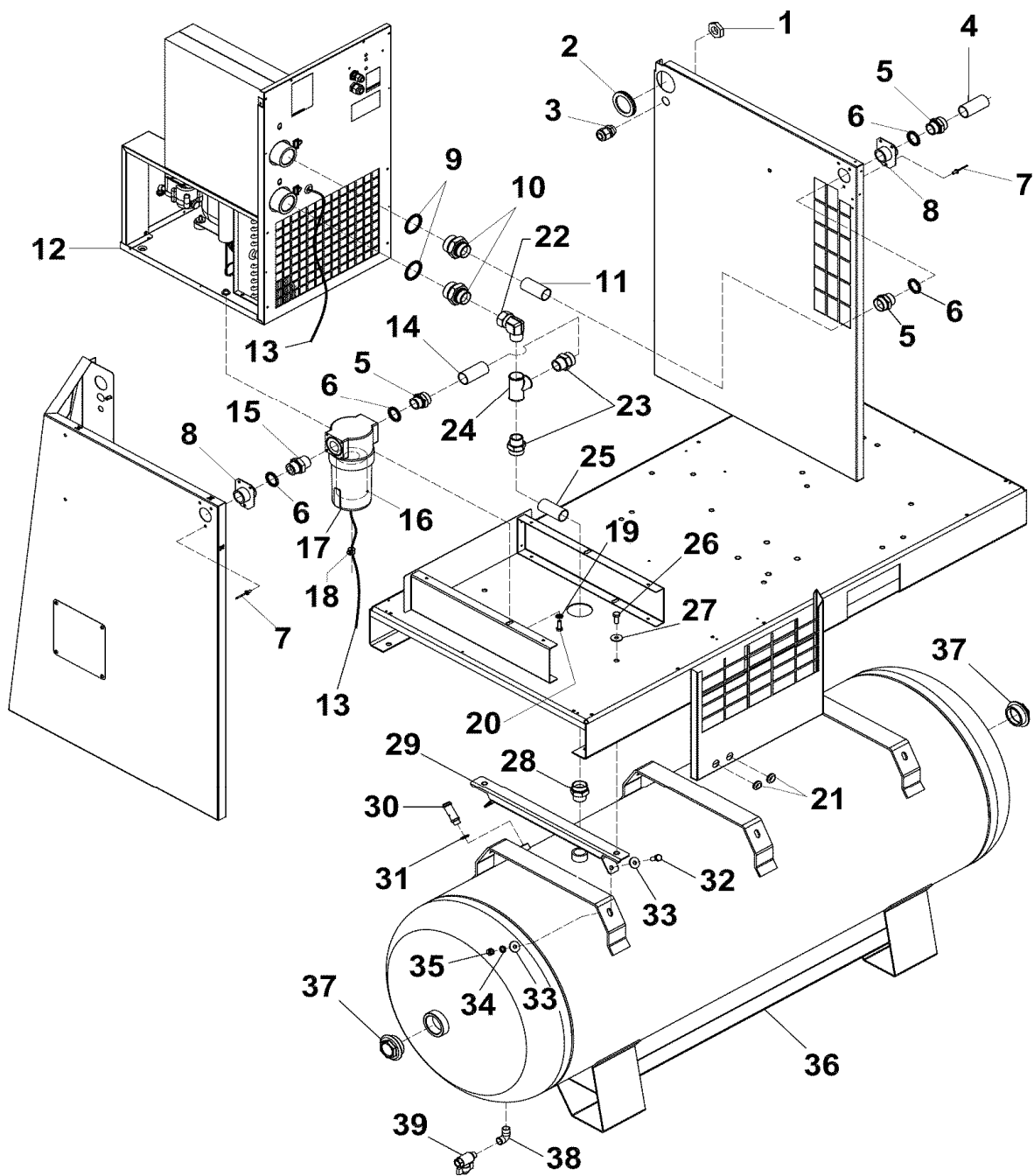






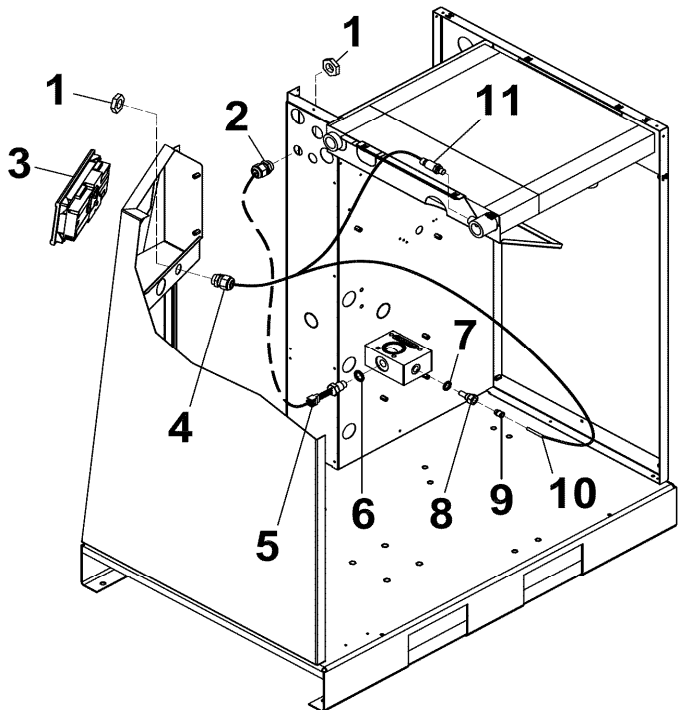








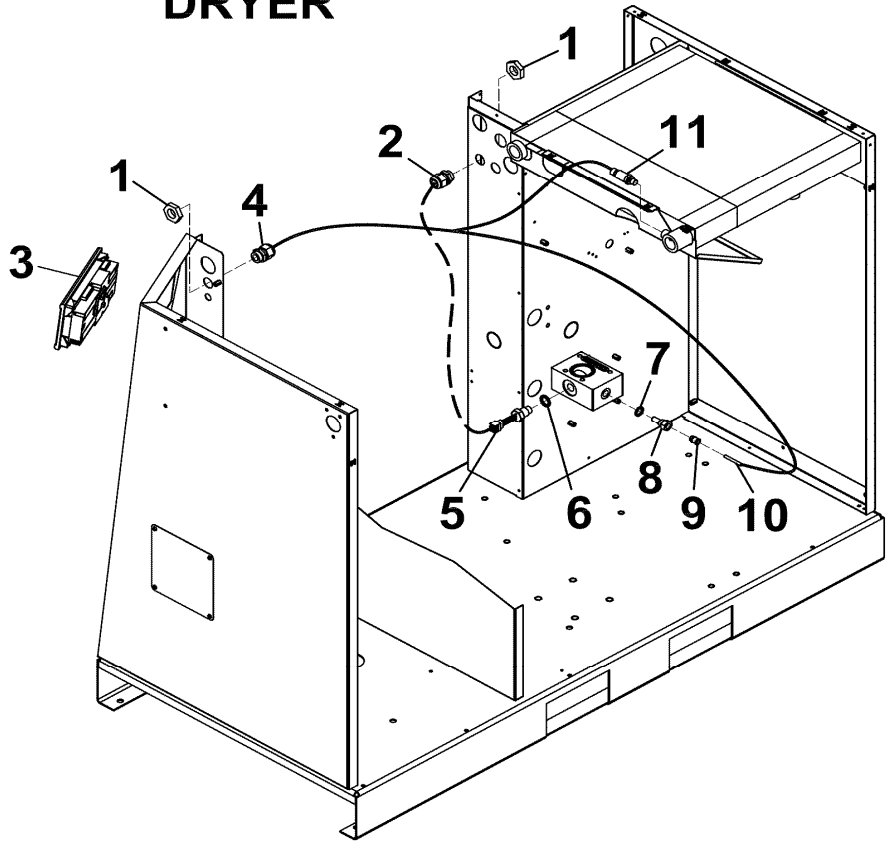
**NO DRYER**



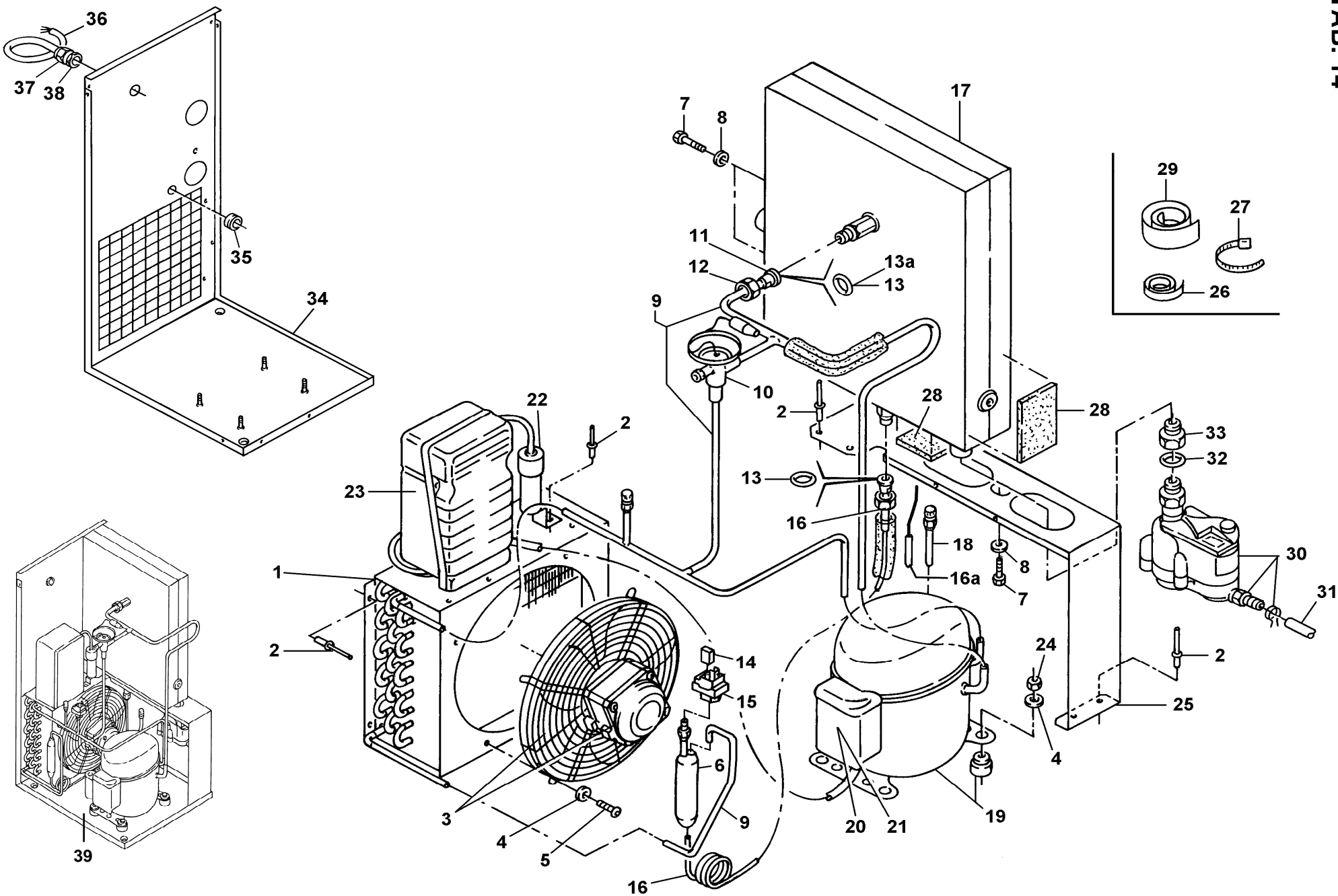
[illegible]



# DRYER

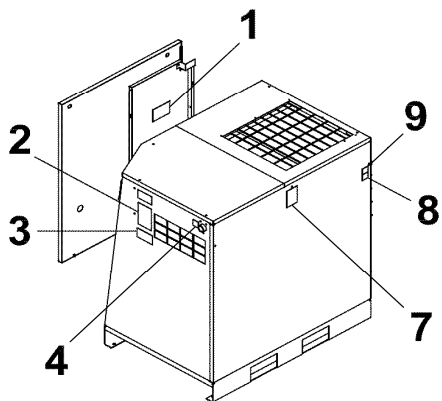
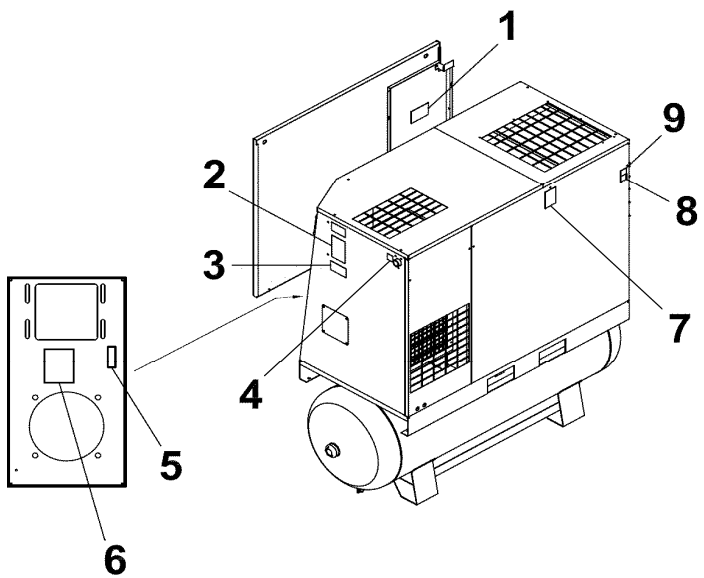
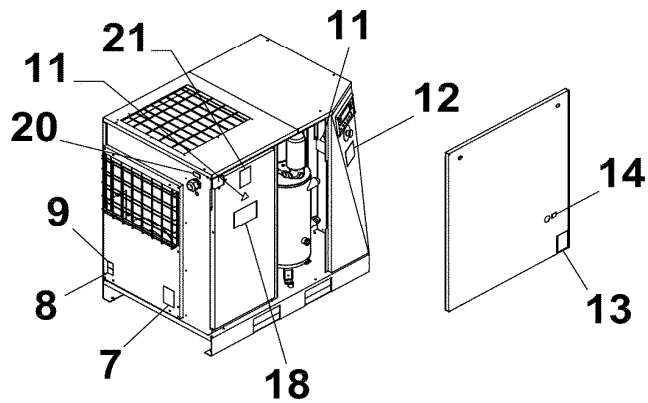
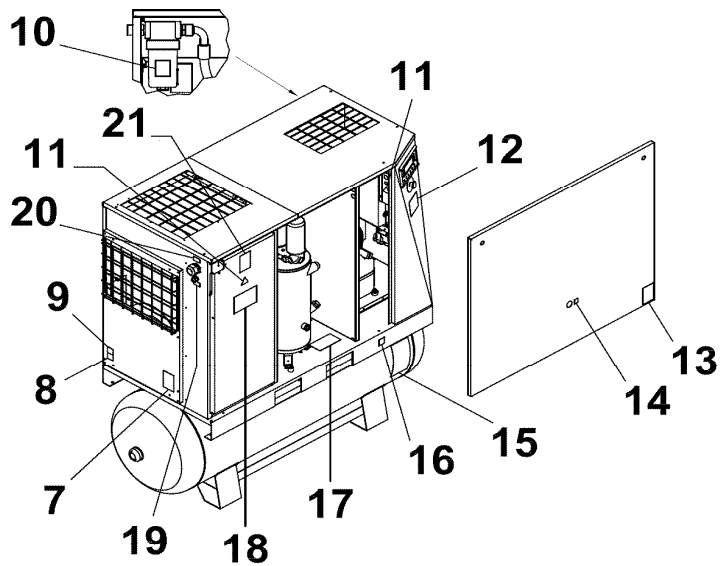
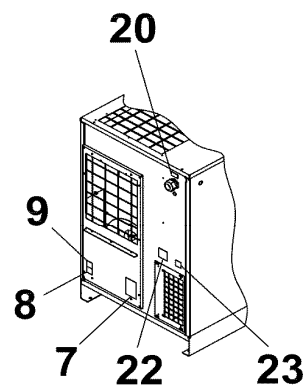
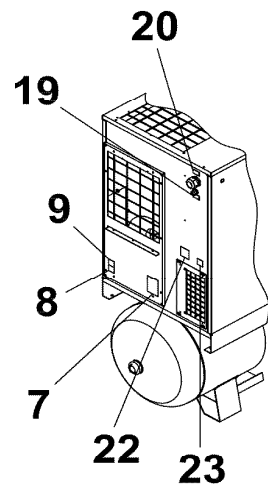








# INVERTER



[illegible]







**TAB. 16**

**KIT DI MANUTENZIONE / SERVICE KIT / KIT DE MAINTENANCE / WARTUNGSAUFBAUSATZ / KIT DE MANTENIMIENTO**

<b>Kit " A " ( 2000 Ore / Hours / Heures / Betriebsstunden / Horas de servicio )</b>	
Codice / Code / Codice / Kode / Código	<b>FORMULA ( HP 25 - kW 18,5 )</b>
<b>2200902615</b>	

<b>Kit " A " ( 2000 Ore / Hours / Heures / Betriebsstunden / Horas de servicio )</b>	
Codice / Code / Codice / Kode / Código	<b>GENESIS / FORMULA E ( HP 25 - kW 18,5 )</b>
<b>2200902612</b>	

<b>Kit " A " ( 2000 Ore / Hours / Heures / Betriebsstunden / Horas de servicio )</b>	
Codice / Code / Codice / Kode / Código	<b>FORMULA ( HP 30 / 40 - kW 22 / 30 )</b>
<b>2200902608</b>	

<b>Kit " A " ( 2000 Ore / Hours / Heures / Betriebsstunden / Horas de servicio )</b>	
Codice / Code / Codice / Kode / Código	<b>GENESIS / FORMULA E ( HP 30 - kW 22 )</b>
<b>2200902607</b>	

<b>Kit " B " ( 8000 Ore / Hours / Heures / Betriebsstunden / Horas de servicio )</b>	
Codice / Code / Codice / Kode / Código	<b>FORMULA ( HP 25 - 30 - 40 / kW 18,5 - 22 - 30 )</b>
<b>2200902610</b>	<b>GENESIS ( HP 25 - 30 / kW 18,5 - 22 )</b>

<b>Tab. huile / Tab. oil / Tab. aceite / Tabella olio / Abb. Öl</b>	
<b>FluidTech</b>	
<b>5 L</b>	<b>6215 7159 00</b>
<b>20 L</b>	<b>6215 7160 00</b>
<b>209 L</b>	<b>6215 7161 00</b>

**TAB. 16**

**KIT DI MANUTENZIONE / SERVICE KIT / KIT DE MAINTENANCE / WARTUNGSAUFBAUSATZ / KIT DE MANTENIMIENTO**

<b>Kit</b> <i>Filtro aria, olio / Air-Oil filter / Filtre air, huile / Luftfilter, Ölfilter / Filtro aire, aceite</i>	
Codice / Code / Codice / Kode / Código	<b>FORMULA ( HP 25 - 30 - 40 / kW 18,5 - 22 - 30 )</b> <b>GENESIS ( HP 25 - 30 / kW 18,5 - 22 )</b>
<b>6229030400</b>	

<b>Kit</b> <i>Filtro disoleatore / Separator oil / Filtre déshuileur / Ölabscheiderfilter / Separador de aceite</i>	
Codice / Code / Codice / Kode / Código	<b>FORMULA ( HP 25 / kW 18,5 )</b> <b>GENESIS ( HP 25 / kW 18,5 )</b>
<b>6229030200</b>	

<b>Kit</b> <i>Filtro disoleatore / Separator oil / Filtre déshuileur / Ölabscheiderfilter / Separador de aceite</i>	
Codice / Code / Codice / Kode / Código	<b>FORMULA ( HP 30 - 40 / kW 22 - 30 )</b> <b>GENESIS ( HP 30 / kW 22 )</b>
<b>6229030300</b>	

<b>Kit</b> <i>Valvola termostatica / Thermostatic valve / Valve thermostatique / Thermostatisches Ventil / Válvula termostática )</i>	
Codice / Code / Codice / Kode / Código	<b>FORMULA ( HP 25 - 30 - 40 / kW 18,5 - 22 - 30 )</b> <b>GENESIS ( HP 25 - 30 / kW 18,5 - 22 )</b>
<b>2200599825</b>	

<b>Kit</b> <i>Valvola di minima pressione / Minimum pressure valve / Soupape à minimum de pression / Mindestdruckventil / Válvula de presión mínima )</i>	
Codice / Code / Codice / Kode / Código	<b>FORMULA ( HP 25 - 30 - 40 / kW 18,5 - 22 - 30 )</b> <b>GENESIS ( HP 25 - 30 / kW 18,5 - 22 )</b>
<b>2200900944</b>	

<b>Kit</b> <i>Valvola di non ritorno / No-return valve / Clapet anti-retour / Rückschlagventil / Válvula antiretorno )</i>	
Codice / Code / Codice / Kode / Código	<b>FORMULA ( HP 25 - 30 - 40 / kW 18,5 - 22 - 30 )</b> <b>GENESIS ( HP 25 - 30 / kW 18,5 - 22 )</b>
<b>6229031700</b>	

<b>Kit</b> <i>Valvola di scarico / Unloading valve / Soupape de décharge / Entlastungsventil / Válvula de descarga )</i>	
Codice / Code / Codice / Kode / Código	<b>FORMULA ( HP 25 - 30 - 40 / kW 18,5 - 22 - 30 )</b> <b>GENESIS ( HP 25 - 30 / kW 18,5 - 22 )</b>
<b>2901000201</b>	

**Tabella cingie / Tab. driving belt / Tab. courroie / Abb. Treibriemen / Tab. correa trasmisora**

HP / kW	bar / psi	50 Hz		60 Hz		NOTE		
		Codice / Code / Code / Kode /Codigo	Q.tà Q.ty Q.té Anz. Cant.	Codice / Code / Code / Kode /Codigo	Q.tà Q.ty Q.té Anz. Cant.			
25 / 18,5	8	2200 6605 35	3					
	10	2200 6605 22	3					
	13	2200 6604 07	3					
30 / 22	8	6214 6223 00	3					
	10	6214 6165 00	3					
	13	2200 6605 22	3					
40 / 30	8	6214 6223 00	3					
	10	6214 6165 00	3					
	13	2200 6605 35	3					

