



QSF-50/60

Rotary Screw Air Compressor



Parts Manual

available to
this manual
ent.

098-1A

Edition

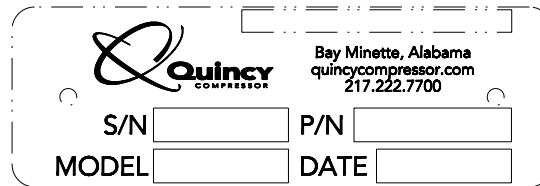
Update: July 2010

Alphabetical Index

Airend.....	4-5
Air Filter (Updated July 2010)	9
Air Piping (air-cooled)	20
Air Piping (water-cooled)	21
Base/Coupling	6
Cabinet (50 hp, air-cooled)	26-27
Cabinet (60 hp, air-cooled)	28-29
Cabinet (water-cooled)	30-31
Control Piping	14-15
Control Schematic.....	34
Cooler	18-19
Decals	32-33
Discharge Piping	7
Electrical Control & Starting.....	10-13
Electrical Control Diagram	35
Fluid Piping (air-cooled)	22
Fluid Piping (water-cooled)	23
Fluid Specifications.....	2
Inlet Valve	8
Ordering Replacement Parts.....	1
Recommended Spare Parts.....	3
Reservoir	16-17
Serial Number Identification.....	1
Shaft Seal Kit	5
Water Piping (fresh water)	24
Water Piping (sea water)	25

Serial Number Identification

The serial number tag is located on the top flange of the unit frame just left of the control panel and in the upper right corner of the electrical control panel.



A rectangular serial number tag with a dashed border. On the left side, there is a stylized 'Q' logo above the word 'Quincy' and 'COMPRESSOR' below it. To the right of the logo, the text 'Bay Minette, Alabama', 'quincycompressor.com', and '217.222.7700' is printed. Below the logo, there are four input fields: 'S/N' followed by a box, 'P/N' followed by a box, 'MODEL' followed by a box, and 'DATE' followed by a box.

Ordering Replacement Parts

Prompt service can be rendered on replacement part orders if the following information is given:

1. The serial number must be given when ordering replacement parts. Part numbers should be verified per the bill of materials associated with the serial number to ensure that correct replacement parts are ordered.
2. State the exact part number needed. Do not order by index numbers, as index numbers are repeated throughout this manual and if used for ordering parts will necessitate time consuming correspondence.
3. State the exact quantity needed.
4. State the preferred type of transportation.

All replacement parts are to be ordered through an authorized distributor. Insist on Genuine Quincy Parts only! Failure to do so may void your warranty.

Fluid Specifications

Quincy Compressor® recommends that all Quincy Rotary Screw Products be filled with one of the following QuinSyn® Brand synthetic fluids:

★QuinSyn PG™★

★QuinSyn F® (food grade)★

★QuinSyn Plus™★

★QuinSyn XP®★

Synthetic fluids other than QuinSyn brand(s) may not be compatible with components used in Quincy Compressor products. If it is deemed necessary to convert a Quincy compressor or vacuum pump to a synthetic other than QuinSyn brand, please contact an authorized Quincy Compressor distributor. To locate your nearest distributor, contact Sales & Marketing in Quincy, Illinois:
Phone 217-222-7700, FAX 217-222-4138 or visit our website:
<http://www.quincycompressor.com>.

The following information will be required by the distributor when changing compressor fluid:

		HORSEPOWER		COOLING		PSI	
		50 60		A/C W/C		100 125 150	

MODEL (CIRCLE CONFIGURATION): _____

SERIAL NO. _____ FLUID ORIGINALLY USED: _____

FLUID NOW USED (IF CHANGED): _____ NEW FLUID TO BE USED: _____

Additional information regarding fluid specifications can be found in the Instruction Manual shipped with your unit.

• **Fluid Analysis Kit**

Quincy Compressor offers free fluid analysis to provide early detection of excessive parts wear, fluid breakdown, or a contaminated fluid system. Order the Fluid Analysis Kit (part no. 128515) from your local authorized Quincy Compressor distributor.

• **Fluid Requirements**

- Air-cooled - 6.60 gallons
- Water-cooled - 7.70 gallons

Recommended Spare Parts

QTY.	PART NUMBER	DESCRIPTION
1	140517	SHAFT SEAL KIT
1	23458-4	AIR FILTER ELEMENT
1	122880-232	TEMPERATURE SWITCH (230°F)
1	143754	TEMPERATURE PROBE-HIGH VIBRATION
1	129732-051	LINE FILTER KIT (INCLUDES BOWL SEAL, FILTER ELEMENT, GASKET)
1	146175-100	DIFFERENTIAL PILOT VALVE KIT (INCLUDES DIAPHRAGM ASSEMBLY & SEAT)
1	124487-021	AIR/FLUID SEPARATOR
1	128691-051	MINIMUM PRESSURE CHECK VALVE KIT
1	128381-050	FLUID FILTER ELEMENT
2	144046-005	QUINSYN PLUS FLUID (5 GALLON CONTAINER)
2	143808-005	QUINSYN PG FLUID (5 GALLON CONTAINER)
2	142784-005	QUINSYN XP FLUID (5 GALLON CONTAINER)
2	110756-005	QUINSYN F FLUID (5 GALLON CONTAINER)
1	128515-3	FLUID ANALYSIS KIT (CONTAINS 3 INDIVIDUAL SAMPLE KITS)



WARNING



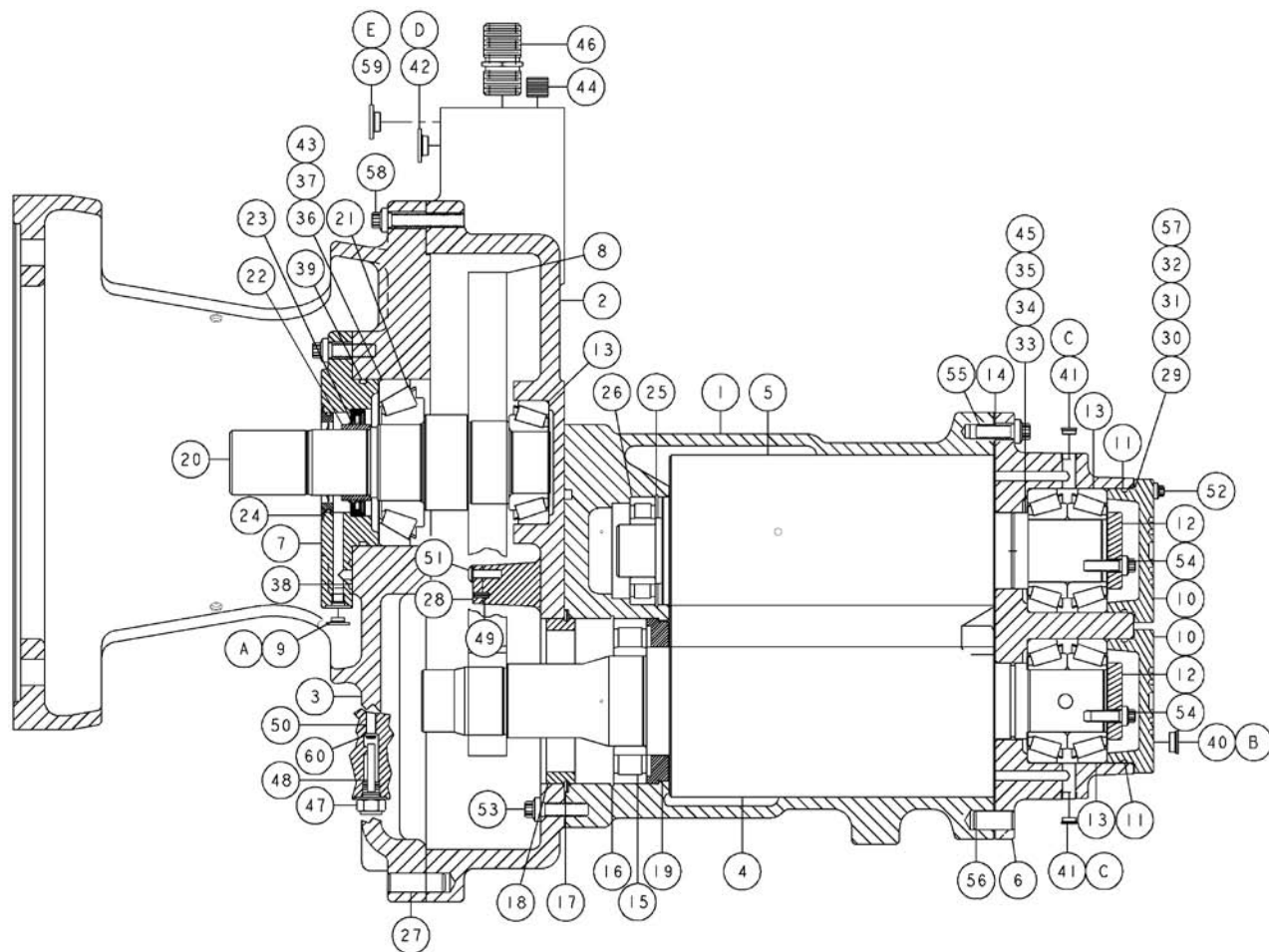
GUARDS MUST BE FASTENED IN PLACE BEFORE STARTING THE MACHINE AND NEVER REMOVED BEFORE DISCONNECTING AND LOCKING OUT THE MAIN POWER SUPPLY.



ANGER



AIR IN THE PIPING FROM THIS EQUIPMENT WILL CAUSE SEVERE INJURY OR DEATH IF USED FOR BREATHING AIR OR FOOD PROCESSING (IF NON-FOOD GRADE FLUID IS USED). AIR USED FOR THESE PROCESSES MUST MEET OSHA 29CFR1910.134 OR FDA 21CFR178.3570 STANDARDS.



ITEM No.	QTY.	PART NUMBER	DESCRIPTION
1	*		ROTOR HOUSING
2	*		GEAR HOUSING
3	1	143461	MOTOR ADAPTER
4	*		MALE ROTOR-127 MM
5	*		FEMALE ROTOR-127 MM
6	1	141977	DISCHARGE END CAP
7	1	141936	SEAL ADAPTER
8	*		GEARS-MATCHED SET
9	1	128883-031	PIPE PLUG-5/16-24 (O-RING)
10	2	125567	DISCHARGE END CAP
11	2	22749-151	VITON O-RING-3.00 I.D.
12	2	125572	BEARING RETAINER
13	*		ROTOR BEARING-DISCHARGE END
14	1	125577-001	DISCHARGE PLATE GASKET
15	*		ROTOR BEARING
16	1	129964-003	BEARING RETAINER RING
17	1	142193-001	RETAINING RING
18	1	142069	PILOT RING
19	1	143019	AIR SEAL
20	1	142066	INPUT SHAFT
21	*		ROTOR BEARING-DISCHARGE END
22	1	129610	WEAR RING SEAL
23	1	140516	SHAFT SEAL
24	1	129613	COMPRESSOR FLUID SLINGER
25	1	125688	BEARING RETAINER

ITEM NO.	QTY.	PART NUMBER	DESCRIPTION
26	*		ROTOR BEARING
27	1	124145-005	DOWEL PIN
28	1	142194	SPRAY NOZZLE CAP
29	4	125576-002	DISCHARGE CAP SHIM-TEMPERED STEEL
30	2	125576-005	DISCHARGE CAP SHIM-TEMPERED STEEL
31	2	125576-010	DISCHARGE CAP SHIM-TEMPERED STEEL
32	2	125576-003	DISCHARGE CAP SHIM-TEMPERED STEEL
33	4	125575-002	ROTOR SHIM-TEMPERED STEEL
34	2	125575-005	ROTOR SHIM-TEMPERED STEEL
35	2	125575-010	ROTOR SHIM-TEMPERED STEEL
36	5	141974-302	ROTOR SHIM-TEMPERED STEEL & STAINLESS STEEL/BRASS
37	1	141974-305	ROTOR SHIM-TEMPERED STEEL & STAINLESS STEEL/BRASS
38	1	22749-113	VITON O-RING-0.56 I.D.
39	1	22749-242	VITON O-RING-4.00 I.D.
40	12	128883-038	PIPE PLUG-3/8-24 (O-RING)
41	2	128883-044	PIPE PLUG-7/16-20 (O-RING)
42	1	128883-056	PIPE PLUG-9/16-18 (O-RING)
43	1	141974-310	ROTOR SHIM-TEMPERED STEEL & STAINLESS STEEL/BRASS
44	1	140881-Q07	SET SCREW-HEX, 5/8-20 UNC X 0.50
45	2	125575-003	ROTOR SHIM-TEMPERED STEEL
46	1	129515	FLUID FILTER STUD
47	1	142265	MODIFIED PLUG
48	1	110705-F16	ROLL PIN-STEEL, 3/16 X 1.25
49	1	110705-D04	ROLL PIN-STEEL, 1/8 X 0.38
50	1	122054	CAPACITY GAUGE CHECK VALVE PISTON
51	1	143165-J10	PATCH SCREW-12 PT, 0.25 UNC X 0.75
52	8	90386-J12	COUNTERBORE SCREW-1/4-20 UNC X 1.00, GRADE 8 (@ 9 FT-LBS)
53	13	90386-L14	COUNTERBORE SCREW-3/8-16 UNC X 1.25, GRADE 8 (@ 45 FT-LBS, BACK OFF TO 25 FT-LBS)
54	6	90386-K12	COUNTERBORE SCREW-5/16-18 UNC X 1.00, GRADE 8 (@ 13 FT-LBS)
55	9	90386-L12	COUNTERBORE SCREW-3/8-16 UNC X 1.00, GRADE 8 (@ 35 FT-LBS)
56	2	124145-006	DOWEL PIN
57	4	125576-015	DISCHARGE CAP SHIM-TEMPERED STEEL
58	14	90386-M16	COUNTERBORE SCREW-7/16-20 UNC X 1.75, GRADE 8 (@ 60 FT-LBS)
59	1	128883-075	PIPE PLUG-3/4-16 (O-RING)
60	1	22749-008	VITON O-RING-0.18 I.D.

COMPONENT MAINTENANCE PARTS

A	1	140406-902	VITON O-RING-0.24 I.D.
B	12	140406-903	VITON O-RING-0.30 I.D.
C	2	140406-904	VITON O-RING-0.35 I.D.
D	1	140406-906	VITON O-RING-0.47 I.D.
E	1	140406-908	VITON O-RING-0.64 I.D.

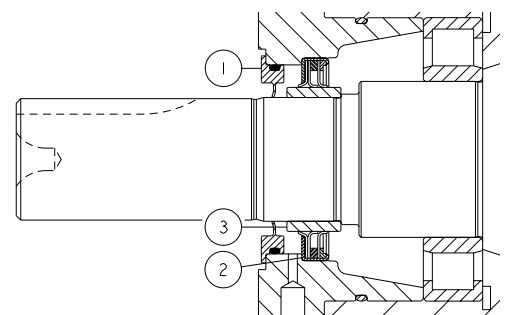
* ITEMS NOT SOLD SEPARATELY, MUST BE ORDERED AS A COMPLETE AIREND.

@ INDICATES TORQUE VALUE IN FOOT POUNDS (LUBRICATED THREADS).

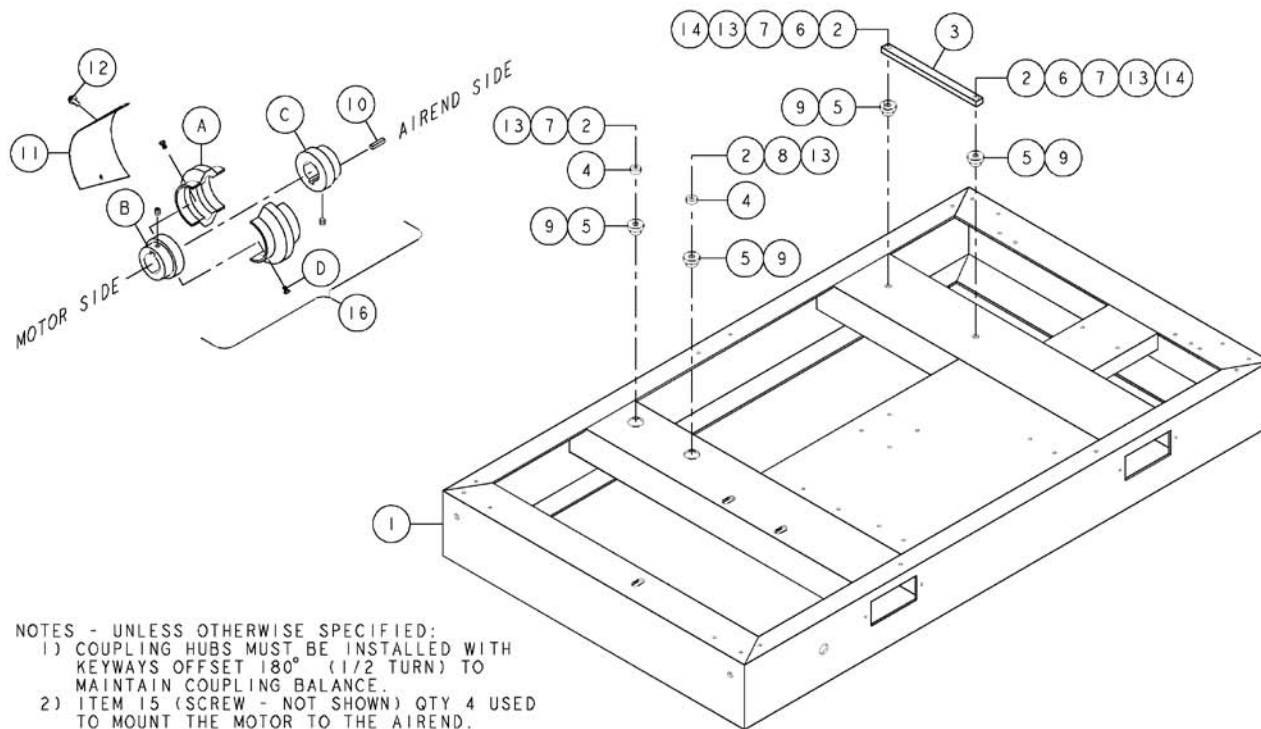
Shaft Seal Kit - 140517

ITEM NO.	QTY.	PART NUMBER	DESCRIPTION
1	1	129613	COMPRESSOR FLUID SLINGER
2	1	140516	SHAFT SEAL
3	1	129610	WEAR RING SEAL

REFERENCE INSTRUCTION MANUAL TO INSTALL COMPRESSOR SHAFT SEAL. TOOL KIT 140284 FOR 127 MM SHAFT SEAL AND WEAR RING INSTALLATION CAN BE PURCHASED FROM QUINCY COMPRESSOR.



Base/Coupling - 142192-001/-002

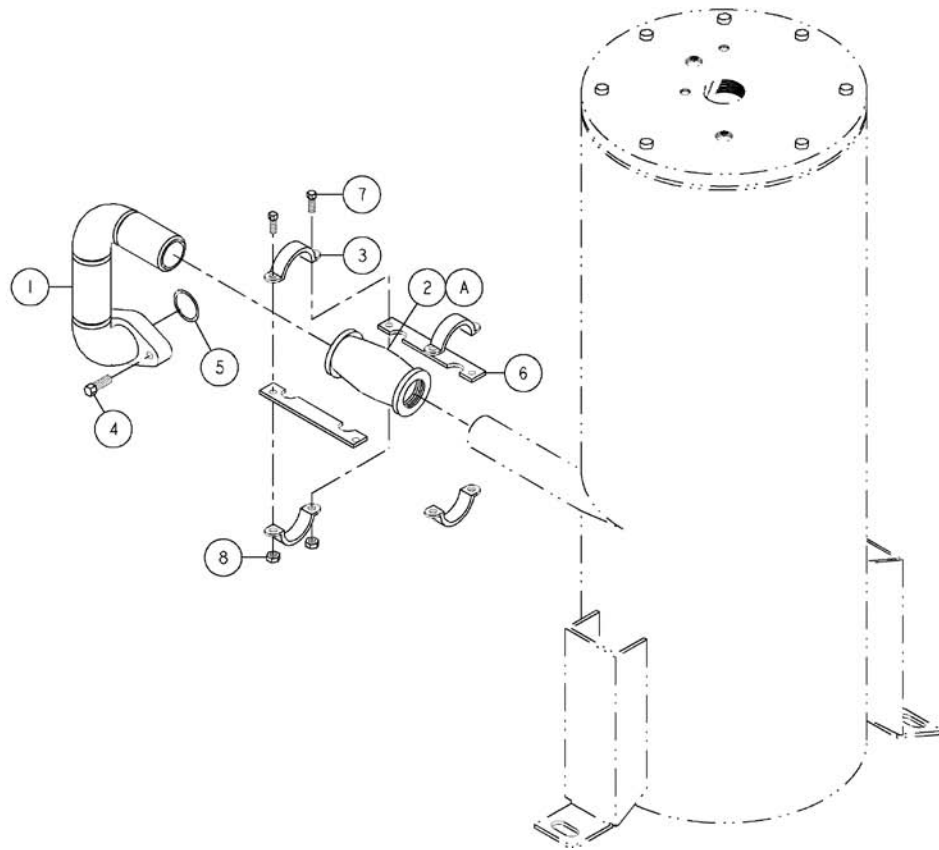


ITEM NO.	QTY.	PART NUMBER	DESCRIPTION
1	1	145082	BASE
2	4	122680-18	FLAT WASHER-0.53
3	1	142554	MOTOR SPACER (50 HP)
	1	129497-004	MOTOR SPACER (60 HP)
4	2	129059-9	MOTOR SPACER
5	4	142201-02	MOTOR MOUNT
6	2	110428W050	FLAT WASHER-0.50
7	3	123478-N23	CAP SCREW-1/2-13 UNC X 3.50, GRADE 5 (@ 75 FT-LBS)
8	1	123478-N17	CAP SCREW-1/2-13 UNC X 2.00, GRADE 5 (@ 55 FT-LBS)
9	4	143803-1	WASHER
10	1	20109	SHAFT KEY
11	2	142240	COUPLING GUARD
12	4	141631-K10	CAP SCREW-5/16-18 UNC X 0.75, GRADE 5 (@ 23 FT-LBS)
13	4	123115-08C	LOCKWASHER, 0.50
14	2	124370-N02	LOCKNUT-1/2-13 UNC
15	4	123478-Q16	CAP SCREW-5/8-11 UNC X 1.75, GRADE 5 (@ 110 FT-LBS)
16	1	128387-105	DRIVE COUPLING

COMPONENT MAINTENANCE PARTS

A	1	128387-404	DRIVE COUPLING ELEMENT (1 PAIR OF HALVES SOLD AS A MATCHED SET ONLY)
B	1	128387-204	COUPLING HUB-MOTOR SIDE (INCLUDES SET SCREW)
C	1	128387-302	COUPLING HUB-AIREND SIDE (INCLUDES SET SCREW)
D	1	128387-502	DRIVE COUPLING BOLT KIT (@ 30 FT-LBS, DRY THREADS)

@ INDICATES TORQUE VALUE IN FOOT POUNDS (LUBRICATED THREADS).



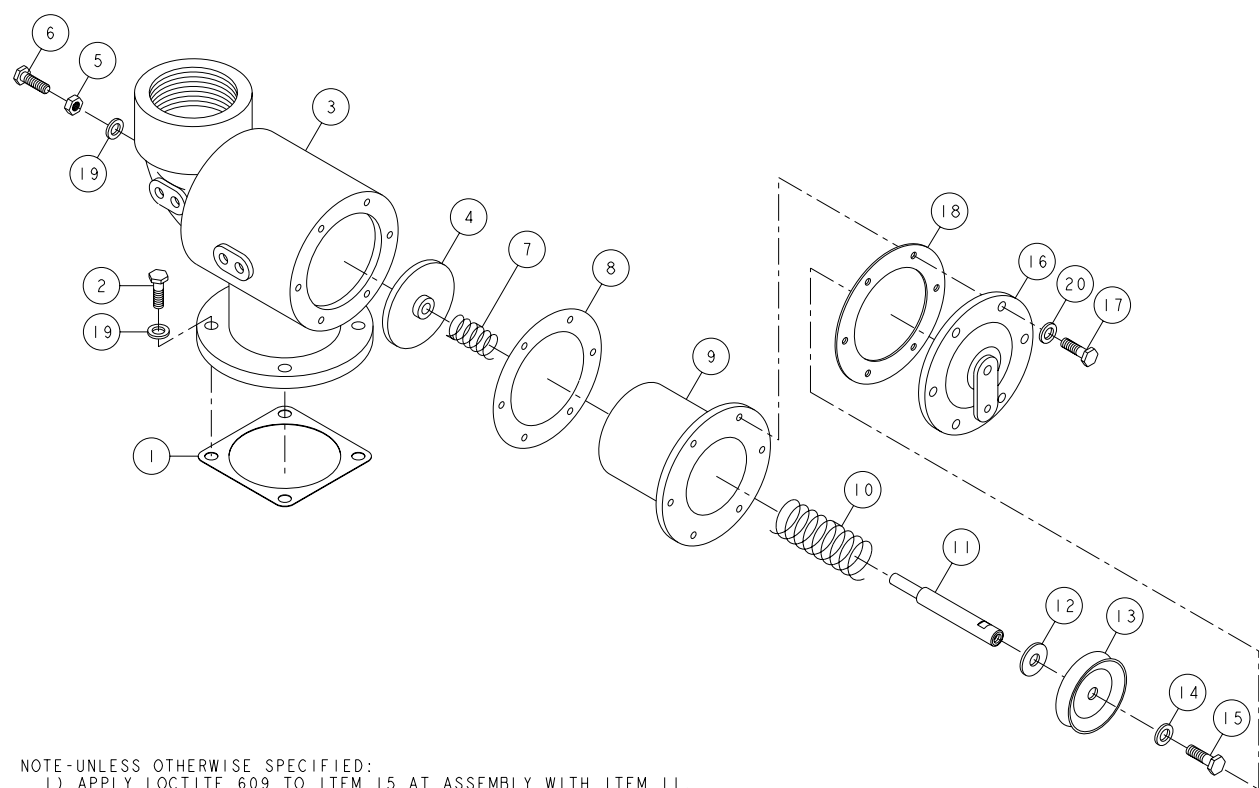
ITEM No.	QTY.	PART NUMBER	DESCRIPTION
1	1	141992-5	DISCHARGE MANIFOLD
2	1	140509S200	FLEXIBLE COUPLING
3	2	124450-001	PIPE CLAMP-2.00
4	2	90386-L15	COUNTERBORE SCREW-3/8-16 UNC X 1.50, GRADE 8 (@ 45 FT-LBS, BACK OFF TO 25 FT-LBS)
5	1	22749-226	VITON O-RING-2.00 I.D.
6	2	124451-001	TENSION BAR
7	4	123478-N15	CAP SCREW-1/2-13 UNC X 1.50, GRADE 5 (@ 55 FT-LBS)
8	4	124370-N02	LOCKNUT-1/2-13 UNC

COMPONENT MAINTENANCE PARTS

A	2	140509G200	COUPLING GASKET
---	---	------------	-----------------

@INDICATES TORQUE VALUE IN FOOT POUNDS (LUBRICATED THREADS).

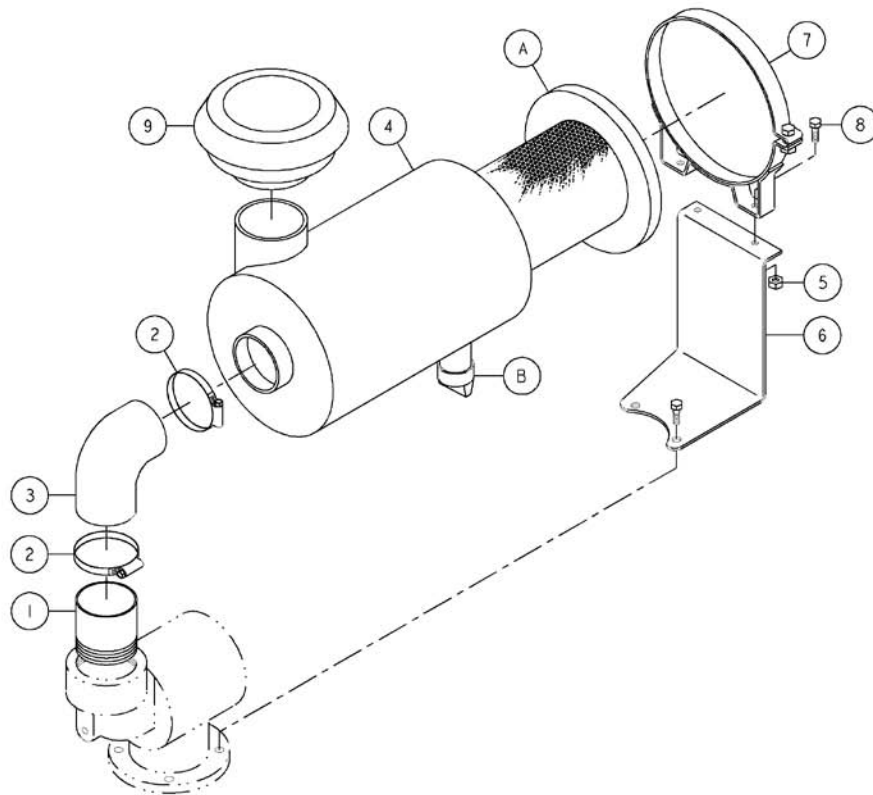
Inlet Valve - 126650



NOTE-UNLESS OTHERWISE SPECIFIED:
1) APPLY LOCTITE 609 TO ITEM 15 AT ASSEMBLY WITH ITEM 11.

ITEM No.	QTY.	PART NUMBER	DESCRIPTION
1	1	141608	INLET VALVE GASKET
2	4	142578-N15	CAP SCREW-ZINC, 1/2-13 UNC X 1.50, GRADE 5 (@ 23 FT-LBS)
3	1	126646	INLET VALVE HOUSING
4	1	122995	INLET VALVE PLATE ASSEMBLY (INCLUDES BUSHING-P/N 23681)
5	1	124368-N02	JAM NUT-1/2-13 UNC
6	1	128720-001	HEX HEAD SCREW-1/2-13 UNC X 5.00, GRADE 5 (@ 55 FT-LBS)
7	1	123092	SPRING
8	1	123549-003	GASKET-6.50 O.D. X 4.56 I.D.
9	1	126644	INLET VALVE CYLINDER (INCLUDES BUSHING-P/N 22880)
10	1	126649	INLET VALVE SPRING
11	1	126648	INLET VALVE SHAFT
12	1	126647	FLAT WASHER-0.56
13	1	126460-350	PISTON CUP
14	1	1478-1	FLAT WASHER-0.52
15	1	123478-N12	CAP SCREW-1/2-13 UNC X 1.00, GRADE 5 (@ 55 FT-LBS)
16	1	126645	INLET VALVE COVER PLATE
17	6	123478-L15	CAP SCREW-3/8-16 UNC X 1.50, GRADE 5 (@ 23 FT-LBS)
18	1	141258	INLET VALVE GASKET
19	5	123115-08C	LOCKWASHER, 0.50
20	6	123115-06C	LOCKWASHER, 0.38

@ INDICATES TORQUE VALUE IN FOOT POUNDS (LUBRICATED THREADS).



NOTES-UNLESS OTHERWISE SPECIFIED:
1) ITEM 9 UNITS NOT USED ON UNITS WITH CABINET.

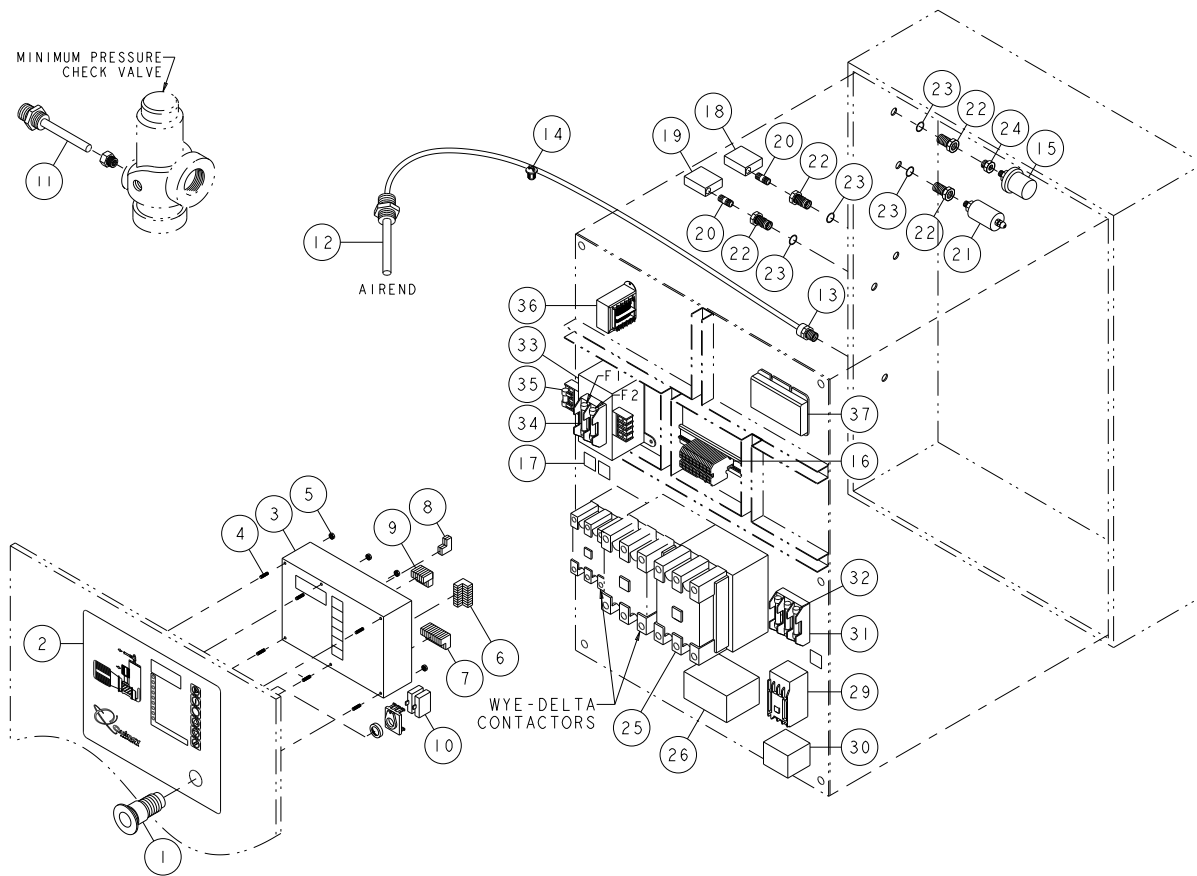
ITEM NO.	QTY.	PART NUMBER	DESCRIPTION
1	1	147676350300	PIPE NIPPLE-3.50 NPT X 3.00, TOE
2	2	110423-072	HOSE CLAMP
3	1	122934-09	RUBBER ELBOW
4	1	22864-21	AIR FILTER
5	2	124370-L02	LOCKNUT-3/8-16 UNC
6	1	142280	AIR FILTER BRACKET
7	1	120045	AIR FILTER MOUNTING BAND
8	2	123478-L12	CAP SCREW-3/8-16 UNC X 1.00, GRADE 5 (@ 23 FT-LBS)
9	1	20187	AIR FILTER HOOD (LESS CABINET)

COMPONENT MAINTENANCE PARTS

A	1	23458-4	AIR FILTER ELEMENT
B	1	121291	DUST EVACUATOR VALVE

@ INDICATES TORQUE VALUE IN FOOT POUNDS (LUBRICATED THREADS).

Electrical Control & Starting



NOTES-UNLESS OTHERWISE SPECIFIED:

- 1) ITEM 27 (CURRENT TRANSFORMER) NOT SHOWN. USED WITH 143780-01 & -02 OVERLOADS ONLY.
- 2) ITEM 28 (MECHANICAL INTERLOCK) NOT SHOWN. USED ON WYE-DELTA ONLY.
- 3) ITEM 37 (PHASE MONITOR) IS OPTIONAL.
- 3) ITEM A (ENCLOSURE LATCH) IS NOT SHOWN.

Electrical Control & Starting

ITEM NO.	QTY.	PART NUMBER	DESCRIPTION
1	1	146102-006	EMERGENCY STOP BUTTON
2	1	142081	CONTROLLER DECAL-QSF ELECTRONIC CONTROL
3	1	142131	ELECTRONIC CONTROLLER
4	6	160048-F09	SET SCREW-# 8 UNF X 0.63
5	6	124365-F02	HEX NUT-# 8 UNF
6	1	142659-03	HEADER PLUG-9 PIN
7	1	142659-04	HEADER PLUG-10 PIN
8	1	142659-01	HEADER PLUG-2 PIN
9	1	142659-02	HEADER PLUG-6 PIN
10	2	146103-002	CONTACT BLOCK (NORMALLY CLOSED)
11	1	122880-232	TEMPERATURE SWITCH (230°F)
12	1	143754	TEMPERATURE PROBE-HIGH VIBRATION
13	1	142096-04	STRAIN RELIEF CONNECTOR
14	4	142388	SELF LOCK CABLE TIE
15	1	129597-001	VACUUM SWITCH
16	1	142334-05	TERMINAL BLOCK ASSEMBLY
17	1	143470	ELECTRICAL DECALS SHEET
18	1	129596-001	DIFFERENTIAL PRESSURE SWITCH (10#)
19	1	129596-002	DIFFERENTIAL PRESSURE SWITCH (19#)
20	2	142125-2	EXTRA STRONG BRASS NIPPLE-0.25 NPT X 1.25
21	1	142133	ELECTRONIC CONTROL TRANSDUCER
22	4	129203-003	BULKHEAD COUPLING
23	4	123157-117	BUNA-N O-RING-0.81 I.D.
24	1	143046-008	PIPE BUSHING-0.25 NPT X 0.12 NPT
25	*	(PAGE 12)	DRIVE MOTOR CONTACTOR
26	1	(PAGE 12)	DRIVE MOTOR OVERLOAD RELAY
27**	3	143781-300	CURRENT TRANSFORMER
28	1	144573-01	MECHANICAL INTERLOCK (WYE-DELTA ONLY)
	1	144573-03	MECHANICAL INTERLOCK (Y-D, 60 HP, 200/230 VOLT ONLY)
29	1	144570-01	FAN MOTOR CONTACTOR
	1	144570-02	FAN MOTOR CONTACTOR (60 HP, 200/230 VOLT ONLY)
30	1	(PAGE 13)	FAN MOTOR OVERLOAD RELAY
31	1	126263-004	FAN MOTOR FUSEBLOCK
32	3	(PAGE 13)	FAN MOTOR FUSES
33	1	(PAGE 13)	TRANSFORMER
34	2	(PAGE 13)	TRANSFORMER FUSE (PRIMARY)
35	1	128622-400	TRANSFORMER FUSE (SECONDARY)
36	1	143674	24 VOLT TRANSFORMER

OPTIONAL:

37	1	129200-001	PHASE MONITOR (200-240 VOLT)
	1	129200-003	PHASE MONITOR (360-430 VOLT)
	1	129200-002	PHASE MONITOR (400-480 VOLT)
	1	128422-003	PHASE MONITOR (525-625 VOLT)
	1	126263-004	PHASE MONITOR FUSEBLOCK
	3	128858-010	PHASE MONITOR FUSE

COMPONENT MAINTENANCE PARTS

A	1	141784-001	ELECTRICAL ENCLOSURE LATCH (NEMA 1)
	1	141784-002	ELECTRICAL ENCLOSURE LATCH (NEMA 4 & 12)

* SEE TABULATION ON PAGE INDICATED FOR QUANTITIES.

** USED ONLY WITH 143780-01 DRIVE MOTOR CONTACTOR.

Electrical Control & Starting

ITEM 25 DRIVE MOTOR CONTACTOR

FULL VOLTAGE			
VOLTAGE	QTY.	50 HP	60 HP
200	1	144570-13	144570-14
230	1	144570-12	144570-13
380	1	144570-10	144570-11
415	1	144570-10	144570-11
460	1	144570-09	144570-10
575	1	144570-08	144570-09

WYE-DELTA				
VOLTAGE	QTY.	50 HP	QTY.	60 HP
200	2	144570-10	3	144570-11
	1	144570-08		
230	2	144570-10	3	144570-11
	1	144570-08		
380	3	144570-08	2	144570-09
			1	144570-08
415	2	144570-07	3	144570-08
	1	144570-05		
460	2	144570-07	3	144570-08
	1	144570-05		
575	2	144570-06	2	144570-07
	1	144570-05		

ITEM 26 DRIVE MOTOR OVERLOAD RELAY

FULL VOLTAGE			
VOLTAGE	QTY.	50 HP	60 HP
200	1	143780-01	143780-01
230	1	143780-01	143780-01
380	1	143780-06	143780-07
415	1	143780-06	143780-07
460	1	143780-06	143780-06
575	1	143780-05	143780-06

WYE-DELTA				
VOLTAGE	QTY.	50 HP	60 HP	
200	1	143780-07	143780-07	
230	1	143780-06	143780-07	
380	1	143780-05	143780-05	
415	1	143780-05	143780-05	
460	1	143780-04	143780-05	
575	1	143780-04	143780-04	

Electrical Control & Starting

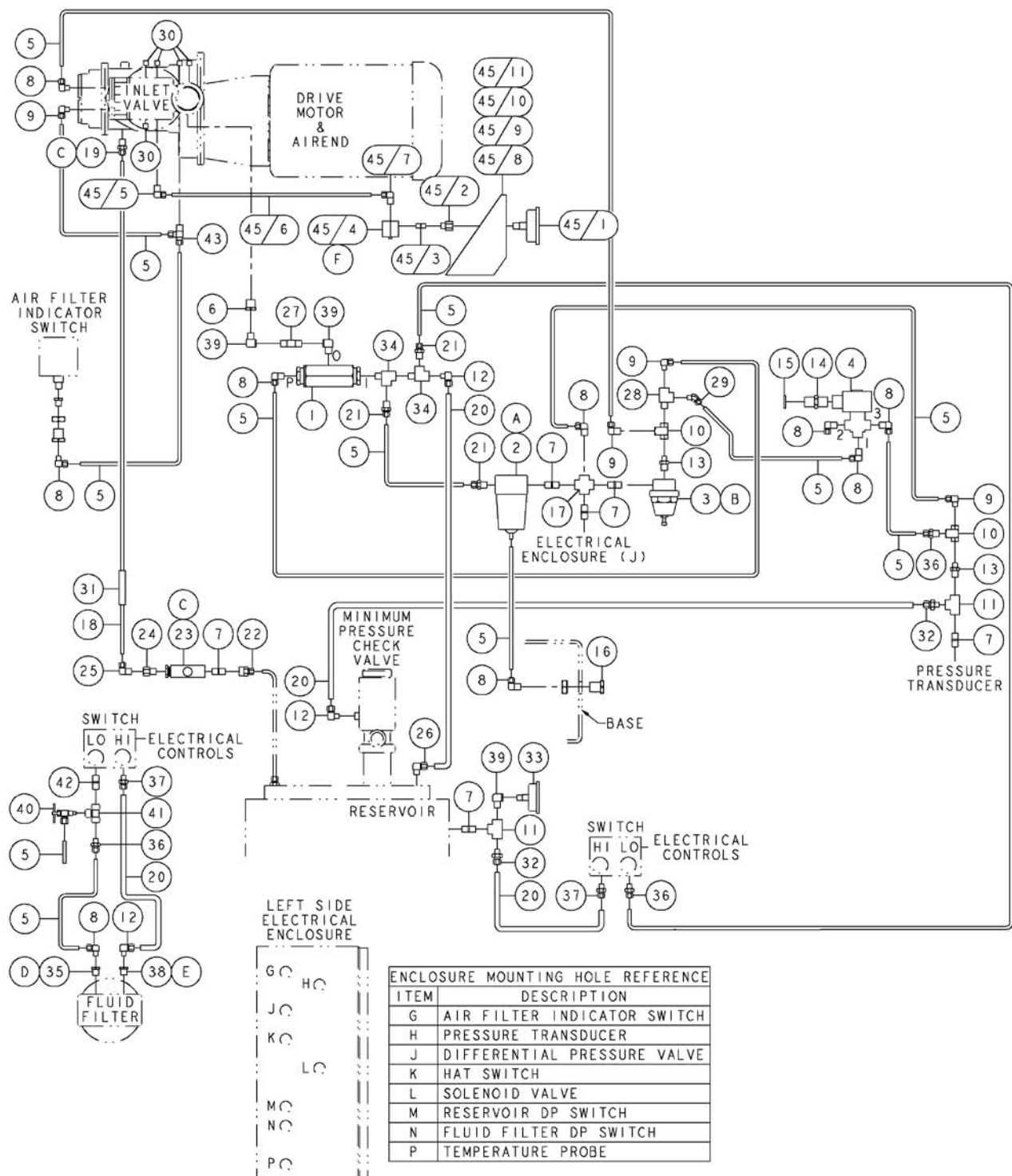
ITEM 30		FAN MOTOR OVERLOAD RELAY	
VOLTAGE	QTY.	50 HP	60 HP
200	1	143780-13	143780-14
230	1	143780-13	143780-13
380	1	143780-13	143780-13
415	1	143780-13	143780-13
460	1	143780-13	143780-13
575	1	143780-12	143780-13

ITEM 32		FAN MOTOR FUSES	
VOLTAGE	QTY.	50 HP	60 HP
200	3	128857-025	128857-035
230	3	128857-023	128857-025
380	3	128857-020	128857-021
415	3	128857-020	128857-021
460	3	128857-008	128857-020
575	3	128857-007	128857-009

ITEM 33		TRANSFORMER	
VOLTAGE	QTY.		
200	1	128413-351	
230	1	128413-353	
380	1	128413-356	
415	1	128413-354	
460	1	128413-353	
575	1	128413-355	

ITEM 34		TRANSFORMER FUSES (PRIMARY)	
VOLTAGE	QTY.		
200	2	128857-006	
230	2	128857-005	
380	2	128857-004	
415	2	128857-004	
460	2	128857-030	
575	2	128857-011	

Control Piping - 143383-060/-061/-062/-063

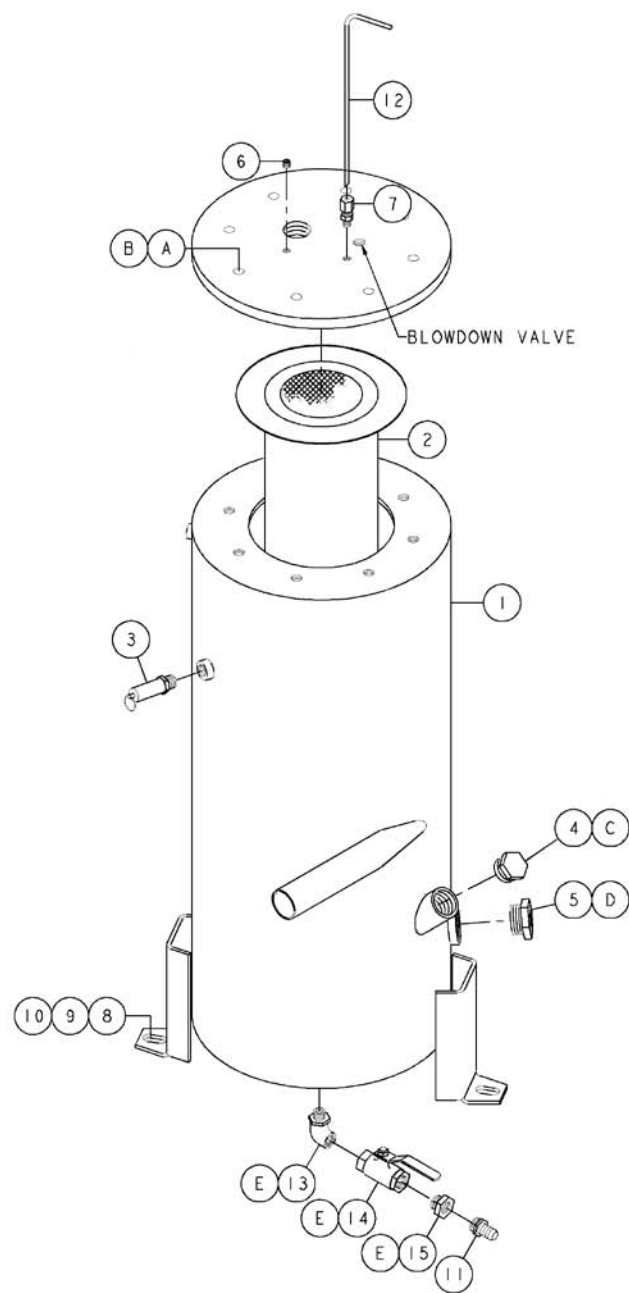


NOTES-UNLESS OTHERWISE SPECIFIED:
1) PLUG CONNECTION AT MOUNTING HOLE J OF ELECTRICAL ENCLOSURE WITH ITEM 44 (PLUG-NOT SHOWN).
2) ITEMS 45/8 THRU 45/11 USED ONLY ON UNITS LESS CABINET.

Control Piping - 143383-060/-061/-062/-063

ITEM NO.	QTY.	PART NUMBER	DESCRIPTION
1	1	128826	BLOWDOWN VALVE
2	1	129732	AUTOMATIC LINE FILTER
3	1	146175-2	DIFFERENTIAL PILOT VALVE
4	1	120496-5	SOLENOID VALVE-3-WAY (100/125#)
	1	120496-4	SOLENOID VALVE-3-WAY (150#)
5	28.0 FT	124435-003	NYLON TUBING-0.25 O.D.
6	1	121033-2	PIPE BUSHING-BRASS, 0.38 NPT X 0.25 NPT
7	6	142125-1	EXTRA STRONG BRASS NIPPLE-0.25 NPT X CLOSE
8	9	124349-005	90° MALE ELBOW-0.25 TUBE X 0.25 NPT
9	4	124349-004	90° MALE ELBOW-0.25 TUBE X 0.125 NPT
10	2	90084	SHUTTLE VALVE-0.125 NPT
11	2	121034-2	PIPE TEE-BRASS, 0.25 NPT
12	3	124349-010	90° MALE ELBOW-0.38 TUBE X 0.25 NPT
13	2	111098-002	PIPE NIPPLE-BRASS, 0.125 NPT X 0.25 NPT X CLOSE
14	1	144545-02	STRAIN RELIEF CONNECTOR-0.50
15	1	8052	CONDUIT LOCKNUT-0.50
16	1	129203-003	BULKHEAD COUPLING
17	1	6150	PIPE CROSS-BRASS, 0.25 NPT
18	4.0 FT	140333	STAINLESS STEEL TUBE-0.25 O.D.
19	1	128885-003	MALE CONNECTOR-0.25 TUBE X 7/16-20 (O-RING)
20	10.8 FT	124435-004	NYLON TUBING-0.38 O.D.
21	3	124393-005	MALE CONNECTOR-0.25 TUBE X 0.25 NPT
22	1	126354-005	FEMALE CONNECTOR-0.25 TUBE X 0.25 NPT
23	1	140508	SIGHTGLASS (O-RING)
24	1	125025	LINE FILTER ORIFICE (0.040)
25	1	110419-005	90° MALE ELBOW-0.25 TUBE X 0.25 NPT
26	1	124349-012	90° MALE ELBOW-0.38 TUBE X 0.50 NPT
27	1	142125-2	EXTRA STRONG BRASS NIPPLE-0.25 NPT X 1.25
28	1	7361-001	PIPE TEE-BRASS, 0.12 NPT
29	1	128967-001	45° MALE ELBOW-0.25 TUBE X 0.12 NPT
30	5	121160	PIPE PLUG-0.125 NPT
31	0.25 FT	140326-04	FUEL TUBING
32	2	124393-012	MALE CONNECTOR-0.38 TUBE X 0.25 NPT
33	1	126345	PRESSURE GAUGE-LIQUID FILLED (0-200#)
34	2	7361	PIPE TEE-BRASS, 0.25 NPT
35	1	140106-024	ADAPTER-7/16-20 X 0.25 NPTF (O-RING)
36	3	124393-004	MALE CONNECTOR-0.25 TUBE X 0.125 NPT
37	2	124393-010	MALE CONNECTOR-0.38 TUBE X 0.12 NPT
38	1	140106-003	ADAPTER-3/4-16 X 0.38 NPTF (O-RING)
39	3	122636	PIPE ELBOW-BRASS, 0.25 NPT
40	1	142947	NEEDLE ANGLE VALVE
41	1	121034-1	PIPE TEE-BRASS, 0.125 NPT
42	1	142125-13	EXTRA STRONG BRASS NIPPLE-0.12 NPT X CLOSE
43	1	124348-002	MALE RUN TEE-0.25 TUBE X 0.125 NPT
44	1	2719	PIPE PLUG-HEX SOCKET, 0.25 NPT
45	1		PERCENT CAPACITY GAUGE GROUP
CONTAINS:			
45/1	1	128663	PERCENT CAPACITY GAUGE
45/2	1	125260-001	PIPE REDUCER-BRASS, 0.25 NPT X 0.12 NPT
45/3	1	142125-13	EXTRA STRONG BRASS NIPPLE-0.12 NPT X CLOSE
45/4	1	122056	CHECK VALVE
45/5	1	124349-004	90° MALE ELBOW-0.25 TUBE X 0.125 NPT
45/6	5.0 FT	124435-003	NYLON TUBING-0.25 O.D.
45/7	1	124349-005	90° MALE ELBOW-0.25 TUBE X 0.25 NPT
45/8*	1	143011	GAUGE PANEL
45/9*	4	124370-K02	LOCKNUT-5/16-18 UNC
45/10*	4	110428W025	FLAT WASHER-0.25
45/11*	4	110511-K10	HEX HEAD SCREW-ZINC, 5/16-18 UNC X 0.75
COMPONENT MAINTENANCE PARTS			
A	1	129732-051	LINE FILTER KIT (INCLUDES BOWL SEAL, FILTER ELEMENT, GASKET)
B	1	146175-100	DIFFERENTIAL PILOT VALVE KIT (INCLUDES DIAPHRAGM ASSEMBLY & SEAT)
C	2	22749-010	VITON O-RING-0.25 I.D.
D	1	140406-904	VITON O-RING-0.35 I.D.
E	1	140406-908	VITON O-RING-0.64 I.D.
F	2	123157-008	BUNA-N O-RING-0.18 I.D.

* THESE ITEMS USED ONLY ON UNITS LESS CABINET.

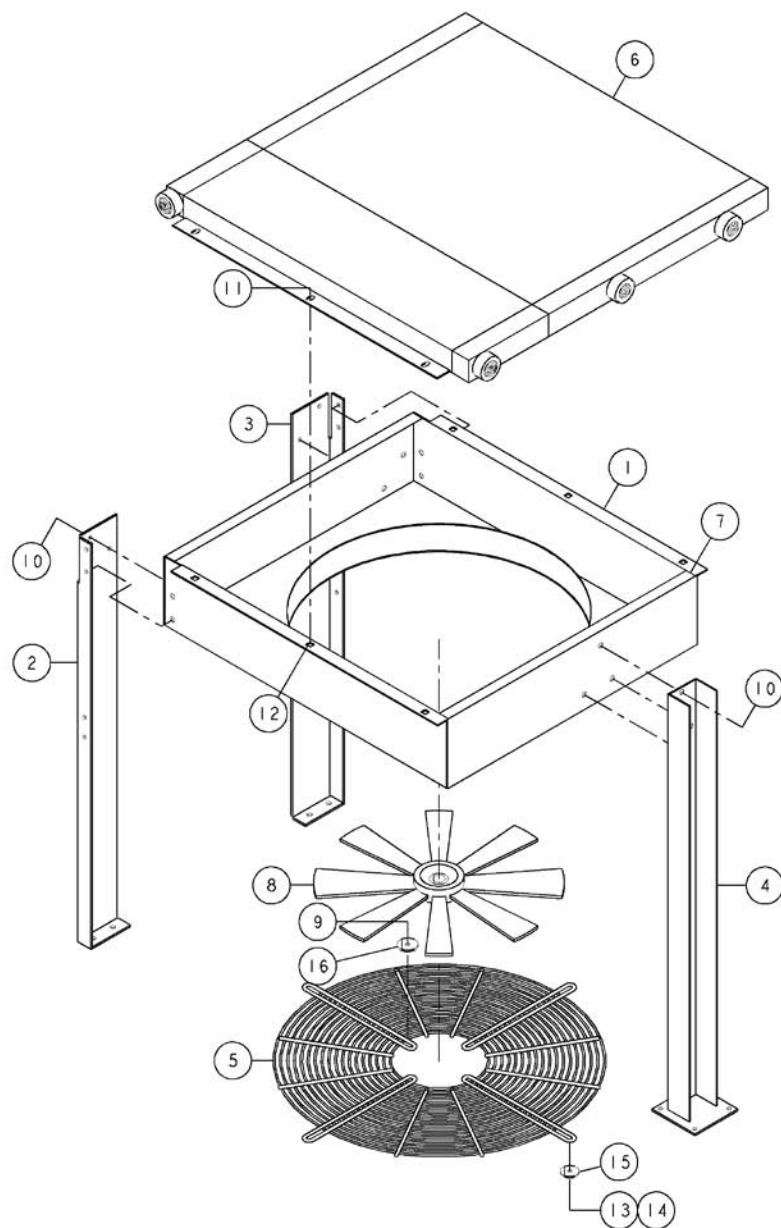


ITEM No.	QTY.	PART NUMBER	DESCRIPTION
1	1	142563-175	AIR/FLUID RESERVOIR
2	1	124487-021	AIR/FLUID SEPARATOR
3	1	143556-175	PRESSURE RELIEF VALVE
4	1	129844-162	FILLER CAP (O-RING)
5	1	129843-188	SIGHTGLASS (O-RING)
6	1	121160	PIPE PLUG-0.125 NPT
7	1	142299	STRAIGHT FITTING-0.25 TUBE X 0.25 NPT
8	3	124370-N02	LOCKNUT-1/2-13 UNC
9	9	110428W050	FLAT WASHER-0.50
10	3	123478-N15	CAP SCREW-1/2-13 UNC X 1.50, GRADE 5 (@ 55 FT-LBS)
11	1	128968-010	BARBED HOSE FITTING-0.50 HOSE X 0.38 NPT
12	1	140323-8	SEPARATOR DRAIN TUBE
13	1	143355-003	ELBOW-0.50 TUBE X 3/4-16 (O-RING)
14	1	129730-050	QUARTER TURN VALVE (O-RING)
15	1	140106-003	ADAPTER-3/4-16 X 0.38 NPTF (O-RING)

COMPONENT MAINTENANCE PARTS

A	8	123478-N16	CAP SCREW-1/2-13 UNC X 1.75, GRADE 5 (@ 55 FT-LBS)
B	8	123115-08C	LOCKWASHER, 0.50
C	1	140406-920	VITON O-RING-1.48 I.D.
D	1	140406-924	VITON O-RING-1.72 I.D.
E	3	140406-908	VITON O-RING-0.64 I.D.

@ INDICATES TORQUE VALUE IN FOOT POUNDS (LUBRICATED THREADS).

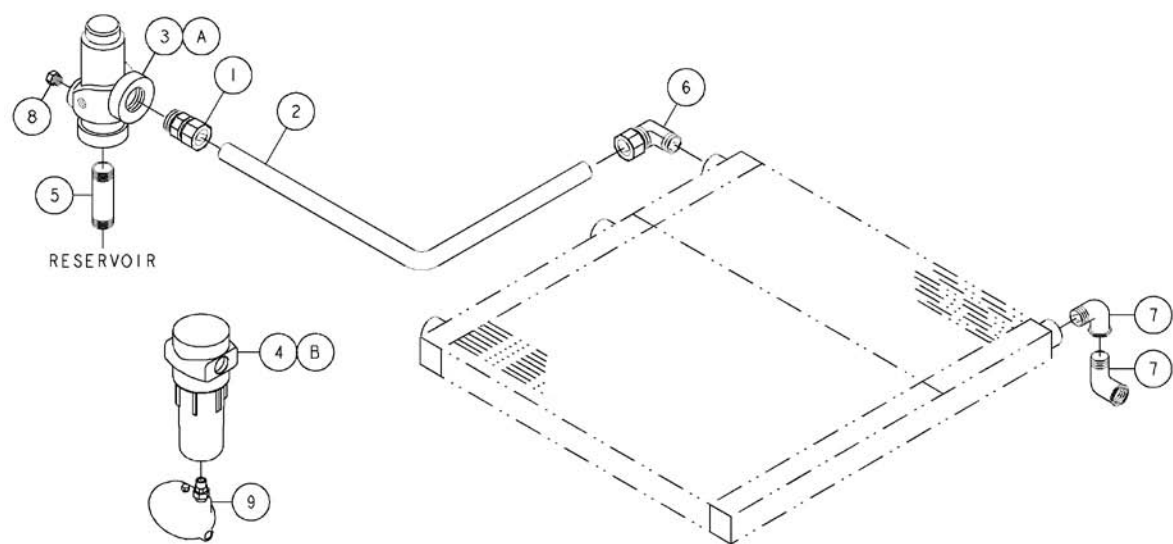


Cooler - 142190-001/-002/-003/-004

ITEM NO.	QTY.	PART NUMBER	DESCRIPTION
1	1	142239-3	COOLER SHROUD (50 HP)
	1	142239-2	COOLER SHROUD (60 HP)
2	1	129567	SUPPORT BRACKET
3	1	129566	SUPPORT BRACKET
4	1	142560-01	SUPPORT BRACKET
5	1	141994-6	FAN GUARD (50 HP)
	1	141994-5	FAN GUARD (60 HP)
6	1	141993	COMBINATION COOLER (200#) (50 HP)
	1	141993-2	COMBINATION COOLER (200#) (60 HP)
7	5.0 FT	141528	RUBBER SEAL
8	1	126511-003	FAN-8 BLADE, 22.0 O.D. (50 HP, 60 Hz)
	1	126511-044	FAN-12 BLADE, 22.0 O.D. (50 HP, 50 Hz)
	1	126511-042	FAN-9 BLADE, 22.0 O.D. (60 HP, 60 Hz)
	1	126511-043	FAN-12 BLADE, 22.0 O.D. (60 HP, 50 Hz)
9	4	141631-L10	CAP SCREW-3/8-16 UNC X 0.75, GRADE 5 (@ 23 FT-LBS) (50 HP)
	4	141631-N12	CAP SCREW-1/2-13 UNC X 1.00, GRADE 5 (@ 23 FT-LBS) (60 HP)
10	19	110511-K10	HEX HEAD SCREW-ZINC, 5/16-18 UNC X 0.75
11	6	141631-K10	CAP SCREW-5/16-18 UNC X 0.75, GRADE 5 (@ 23 FT-LBS)
12	6	112272-L02	SELF-LOCKING HEX NUT-ZINC, 3/8-16 UNC
13	4	110511-K12	HEX HEAD SCREW-ZINC, 5/16-18 UNC X 1.00
14	4	112272-K02	SELF-LOCKING HEX NUT-ZINC, 5/16-18 UNC
15	4	110428W031	FLAT WASHER-0.31
16	4	110428W038	FLAT WASHER-0.38 (50 HP)
	4	110428W050	FLAT WASHER-0.50 (60 HP)

@ INDICATES TORQUE VALUE IN FOOT POUNDS (LUBRICATED THREADS).

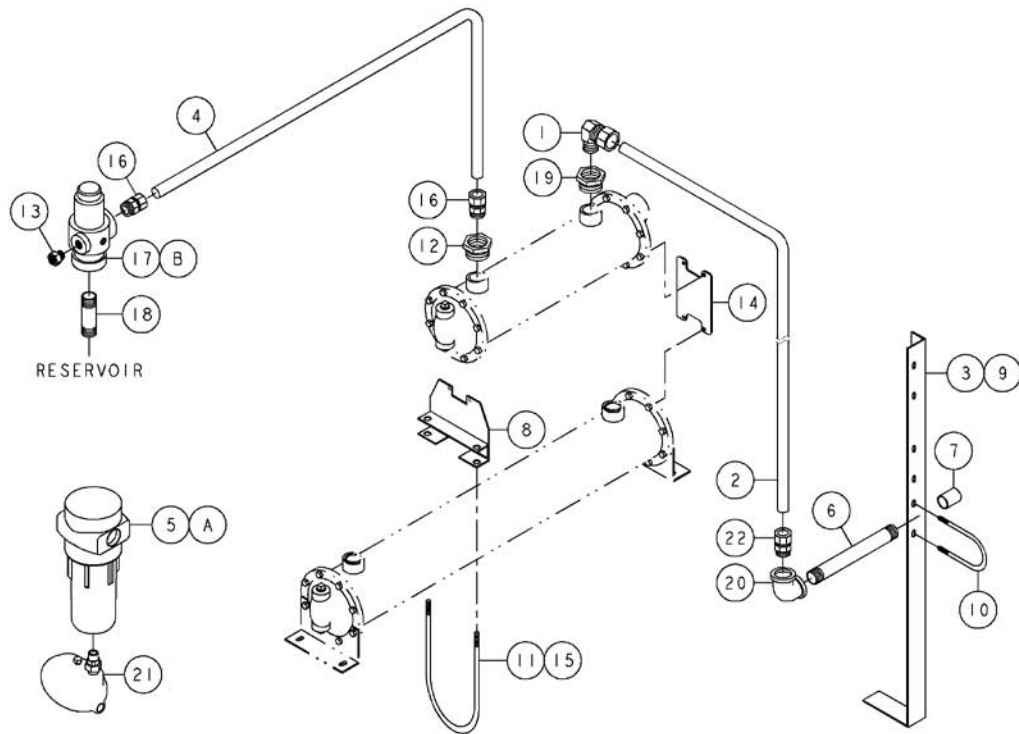
Air Piping (air-cooled) - 142191-001



NOTES-UNLESS OTHERWISE SPECIFIED:
1) ITEMS 4 AND 9 ARE SHIPPED LOOSE.

ITEM No.	QTY.	PART NUMBER	DESCRIPTION
1	1	23240	MALE CONNECTOR-1.50 TUBE X 1.50 NPT
2	1	121918-073	FORMED STEEL TUBE-1.50 O.D.
3	1	128691-001	MINIMUM PRESSURE CHECK VALVE
4	1	145999-125	MOISTURE SEPARATOR
5	1	125939-034	PIPE NIPPLE-1.50 NPT X 5.00
6	1	110419-023	90° MALE ELBOW-1.50 TUBE X 1.50 NPT
7	2	5760	PIPE ELBOW-1.25 NPT
8	1	142939	PIPE BUSHING-BRASS, 0.50 NPT X 0.75 NPT
9	1	146395	CONDENSATE DRAIN
COMPONENT MAINTENANCE PARTS			
A	1	128691-051	MINIMUM PRESSURE CHECK VALVE KIT
B	1	145999-051	VITON O-RING

Air Piping (water-cooled) - 142191-002



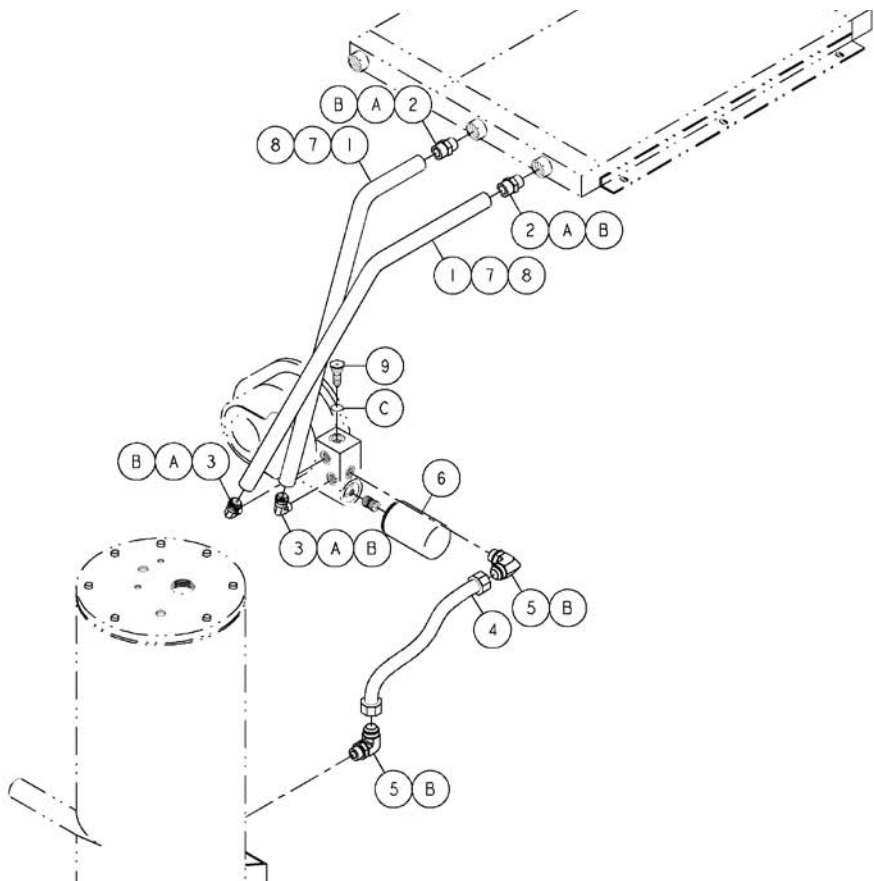
NOTES-UNLESS OTHERWISE SPECIFIED:
1) ITEMS 5 & 21 ARE SHIPPED LOOSE.

ITEM No.	QTY.	PART NUMBER	DESCRIPTION
1	1	110419-022	90° MALE ELBOW-1.25 TUBE X 1.25 NPT
2	1	121918-013	FORMED STEEL TUBE-1.25 O.D.
3	2	110511-K10	HEX HEAD SCREW-ZINC, 5/16-18 UNC X 0.75
4	1	121918-008	FORMED STEEL TUBE-1.50 O.D.
5	1	145999-125	MOISTURE SEPARATOR
6	1	125938-066	PIPE NIPPLE-1.25 NPT X 9.00
7	1	120290	PIPE COUPLING-1.25 NPT
8	1	142150-1	COOLER SUPPORT BRACKET
9	1	142150-3	COOLER SUPPORT BRACKET
10	1	6306	U-BOLT, 1/4-18 UNC
11	1	23731	U-BOLT, 1/2-13 UNC
12	1	6064	PIPE BUSHING-2.00 NPT X 1.50 NPT
13	1	142939	PIPE BUSHING-BRASS, 0.50 NPT X 0.75 NPT
14	1	142744	COOLER SUPPORT BRACKET
15	2	124370-N02	LOCKNUT-1/2-13 UNC
16	2	23240	MALE CONNECTOR-1.50 TUBE X 1.50 NPT
17	1	128691-001	MINIMUM PRESSURE CHECK VALVE
18	1	125939-054	PIPE NIPPLE-1.50 NPT X 7.50
19	1	6639	PIPE BUSHING-2.00 NPT X 1.25 NPT
20	1	4715	PIPE ELBOW-1.25 NPT
21	1	146395	CONDENSATE DRAIN
22	1	23225	MALE CONNECTOR-1.25 TUBE X 1.25 NPT

COMPONENT MAINTENANCE PARTS

A	1	145999-051	VITON O-RING
B	1	128691-051	MINIMUM PRESSURE CHECK VALVE KIT

Fluid Piping (air-cooled) - 142198-001

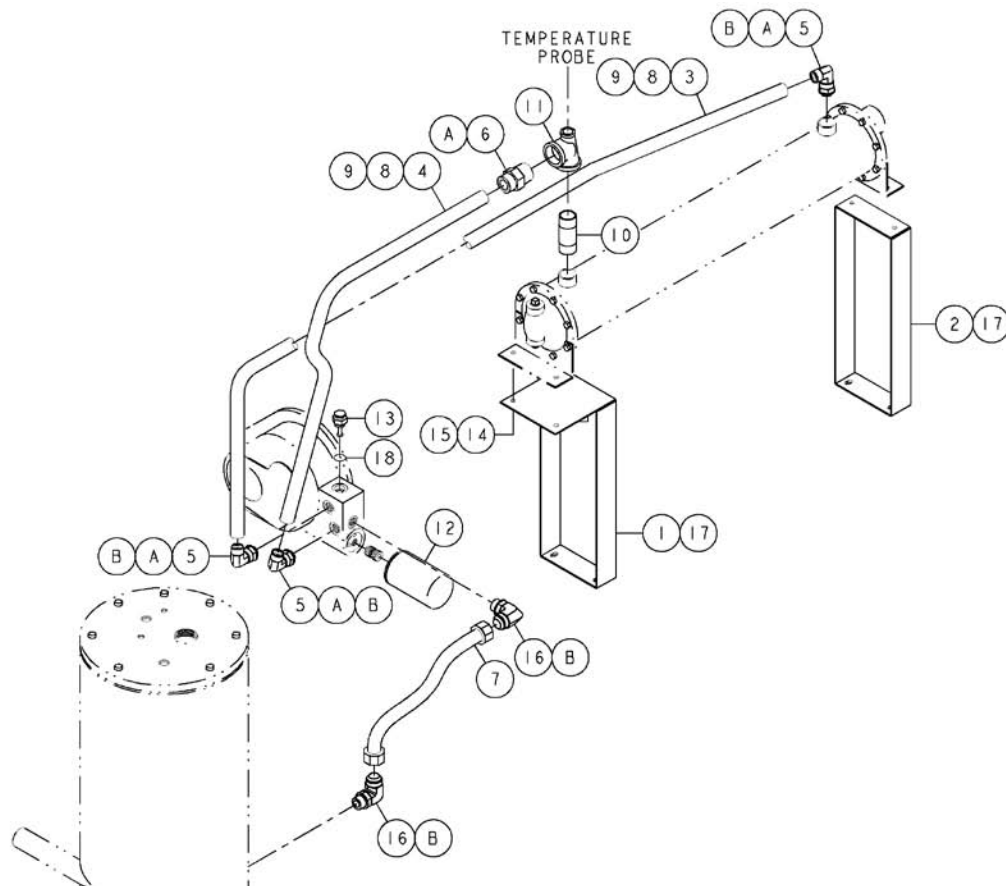


ITEM No.	QTY.	PART NUMBER	DESCRIPTION
1	2	121918-111	FORMED STEEL TUBE-0.75 O.D.
2	2	140682-016	CONNECTOR-0.75 TUBE X 1-1/16-12 (O-RING)
3	2	140676-014	ELBOW-0.75 TUBE X 1-1/16-12 (O-RING)
4	1	141951-011	HOSE ASSEMBLY-1.00 X 18.00 LONG
5	2	129010-018	ELBOW-1.00 TUBE X 1 1/16-12 (O-RING)
6	1	128381-050	FLUID FILTER ELEMENT
7	4	140679-005	NUT-0.75 O.D. TUBE
8	4	140680-005	SLEEVE-0.75 TUBE
9	1	140147-2	THERMAL VALVE-CARTRIDGE

COMPONENT MAINTENANCE PARTS

A	4	140675-005	VITON O-RING/FACE SEAL-0.74 I.D.
B	6	140406-912	VITON O-RING-0.92 I.D.
C	1	22749-123	VITON O-RING-1.18 I.D.

Fluid Piping (water-cooled) - 142198-002



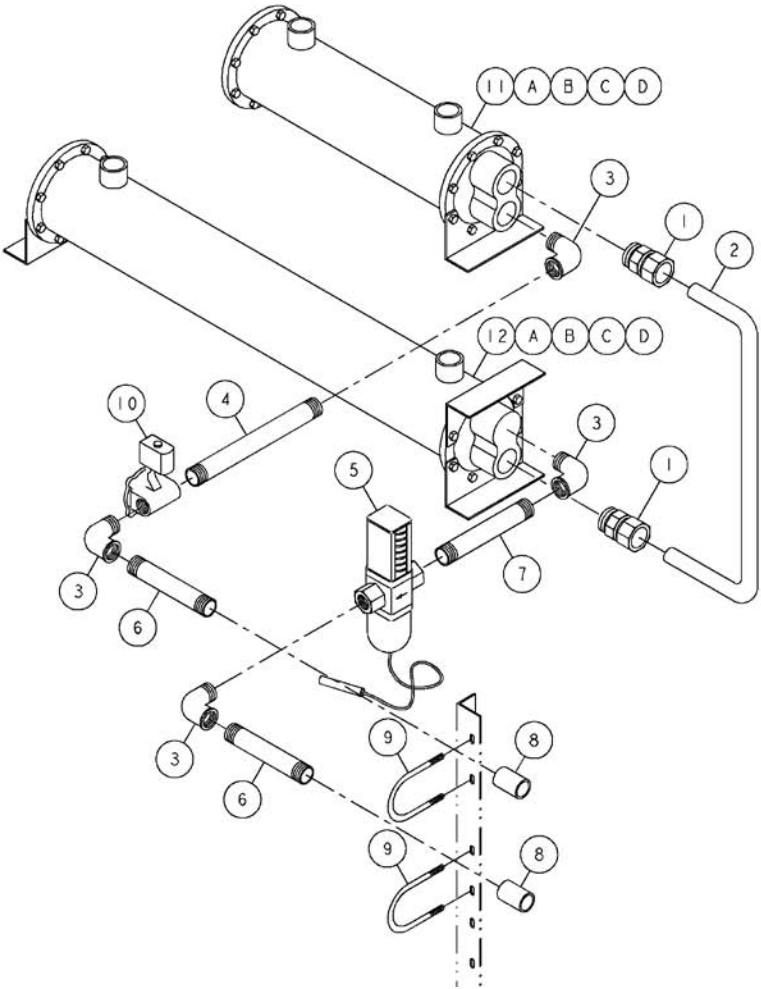
ITEM No.	QTY.	PART NUMBER	DESCRIPTION
1	1	142150-4	COOLER SUPPORT BRACKET
2	1	142150-2	COOLER SUPPORT BRACKET
3	1	142151-2	FORMED STAINLESS STEEL TUBE-0.75 O.D.
4	1	142151-1	FORMED STAINLESS STEEL TUBE-0.75 O.D.
5	3	140676-014	ELBOW-0.75 TUBE X 1-1/16-12 (O-RING)
6	1	140681-014	CONNECTOR-1.00 NPTF X 0.75 TUBE (O-RING)
7	1	141951-011	HOSE ASSEMBLY-1.00 X 18.00 LONG
8	4	140679-005	NUT-0.75 O.D. TUBE
9	4	140680-005	SLEEVE-0.75 TUBE
10	1	125938-026	PIPE NIPPLE-1.25 NPT X 4.00
11	1	124420-037	PIPE TEE-1.25 NPT X 0.50 NPT X 1.00 NPT
12	1	128381-050	FLUID FILTER ELEMENT
13	1	140649	THERMAL VALVE PLUG
14	4	141631-K10	CAP SCREW-5/16-18 UNC X 0.75, GRADE 5 (@ 23 FT-LBS)
15	4	112272-K02	SELF-LOCKING HEX NUT-ZINC, 5/16-18 UNC
16	2	129010-018	ELBOW-1.00 TUBE X 1 1/16-12 (O-RING)
17	4	110511-K10	HEX HEAD SCREW-ZINC, 5/16-18 UNC X 0.75
18	1	22749-123	VITON O-RING-1.18 I.D.

COMPONENT MAINTENANCE PARTS

A	4	140675-005	VITON O-RING/FACE SEAL-0.74 I.D.
B	5	140406-912	VITON O-RING-0.92 I.D.

@INDICATES TORQUE VALUE IN FOOT POUNDS (LUBRICATED THREADS).

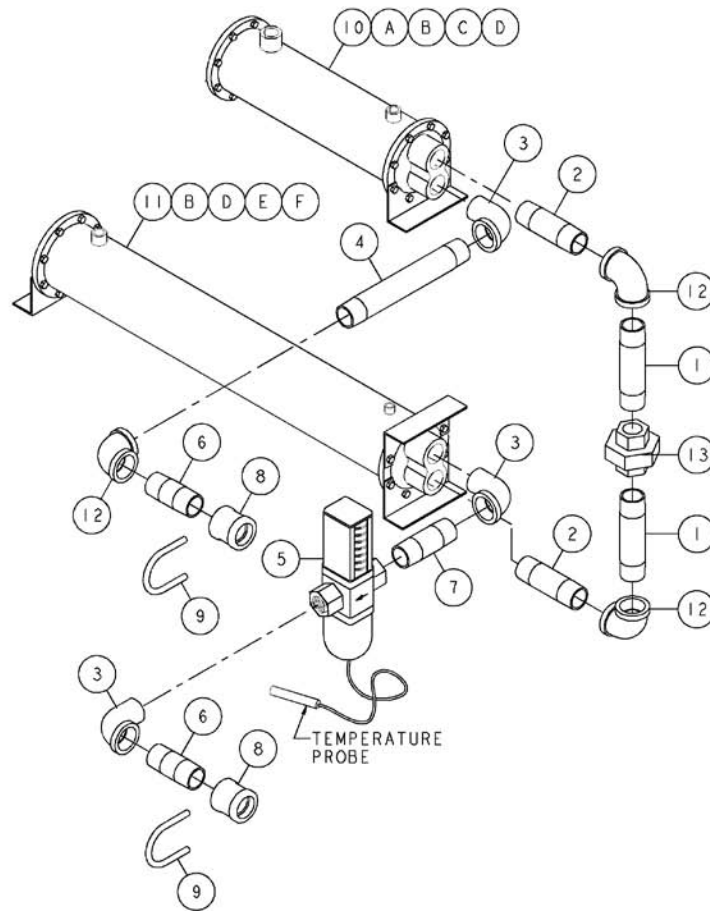
Water Piping (fresh water) - 142220-001



ITEM No.	QTY.	PART NUMBER	DESCRIPTION
1	2	23358	MALE CONNECTOR-1.00 TUBE X 1.00 NPT
2	1	142549-001	FORMED STEEL TUBE-1.00 O.D.
3	4	21730	PIPE ELBOW-GALVANIZED, 1.00 NPT
4	1	126020-030	PIPE NIPPLE-GALVANIZED, 1.00 NPT X 4.50
5	1	23219-1	WATER TEMPERATURE REGULATOR VALVE
6	2	126020-018	PIPE NIPPLE-GALVANIZED, 1.00 NPT X 3.00
7	1	126020-022	PIPE NIPPLE-GALVANIZED, 1.00 NPT X 3.50
8	2	21740	PIPE COUPLING-GALVANIZED, 1.00 NPT
9	2	120317	U-BOLT, 5/16-18 UNC
10	1	22431	SOLENOID VALVE-2-WAY
11	1	22709-18	HEAT EXCHANGER-AFTERCOOLER
12	1	22708-27	HEAT EXCHANGER-FLUID COOLER

COMPONENT MAINTENANCE PARTS

A	2	22708-725	COOLER BONNET-IN/OUT END
B	2	22708-727	COOLER GASKET-IN/OUT END
C	2	22708-726	COOLER BONNET-RETURN END
D	2	22708-728	COOLER GASKET-RETURN END

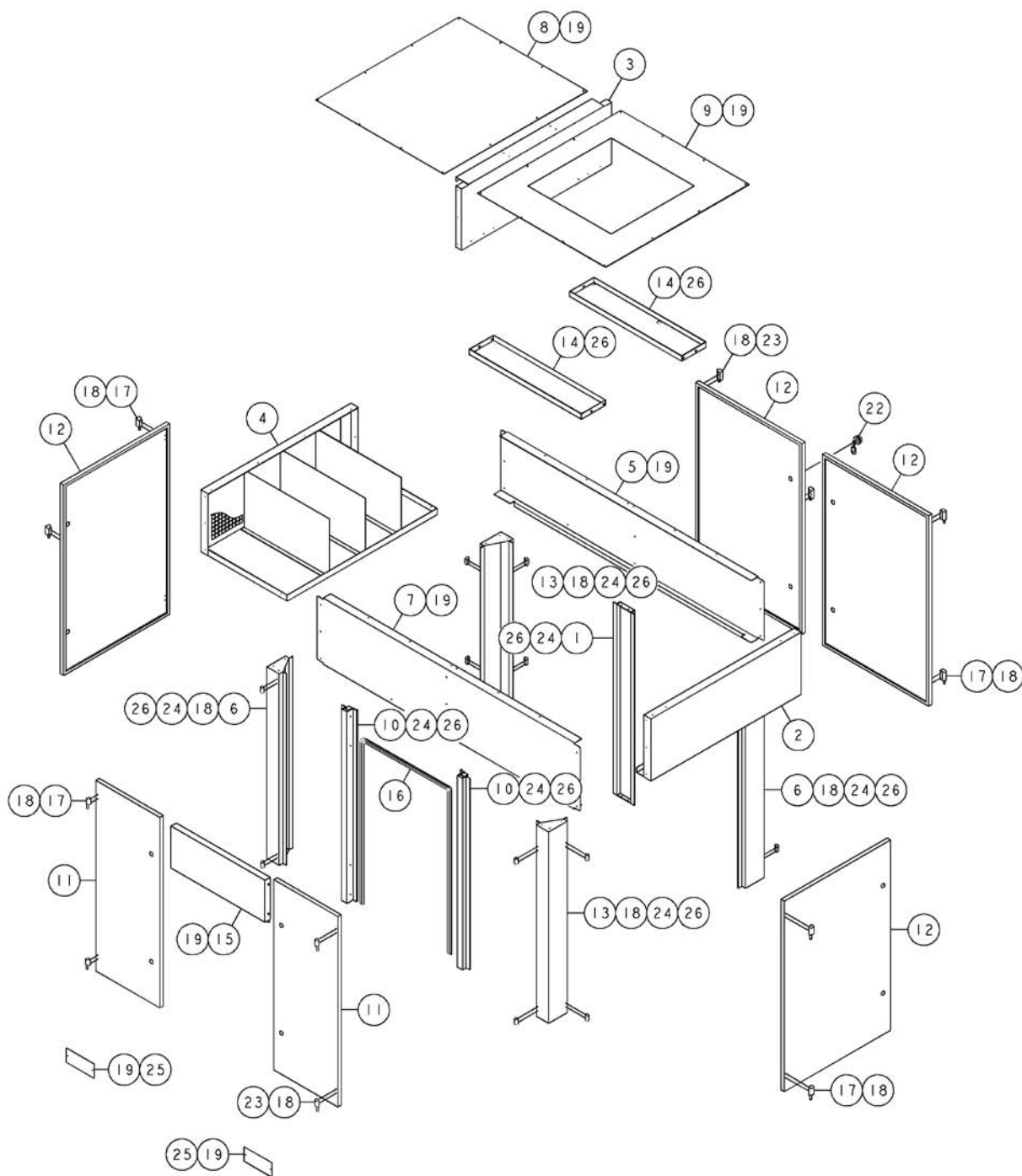


ITEM No.	QTY.	PART NUMBER	DESCRIPTION
1	2	126020-034	PIPE NIPPLE-GALVANIZED, 1.00 NPT X 5.00
2	2	126020-026	PIPE NIPPLE-GALVANIZED, 1.00 NPT X 4.00
3	3	21730	PIPE ELBOW-GALVANIZED, 1.00 NPT
4	1	126020-062	PIPE NIPPLE-GALVANIZED, 1.00 NPT X 8.50
5	1	23219-1	WATER TEMPERATURE REGULATOR VALVE
6	2	126020-018	PIPE NIPPLE-GALVANIZED, 1.00 NPT X 3.00
7	1	126020-022	PIPE NIPPLE-GALVANIZED, 1.00 NPT X 3.50
8	2	21740	PIPE COUPLING-GALVANIZED, 1.00 NPT
9	2	120317	U-BOLT, 5/16-18 UNC
10	1	124061-009	HEAT EXCHANGER-AFTERCOOLER (SEA WATER)
11	1	124060-014	HEAT EXCHANGER-FLUID COOLER (SEA WATER)
12	3	21731	PIPE ELBOW-GALVANIZED, 1.00 NPT
13	1	127289-019	PIPE UNION-1.00 NPT

COMPONENT MAINTENANCE PARTS

A	1	124061-225	COOLER BONNET-IN/OUT END
B	2	22708-727	COOLER GASKET-IN/OUT END
C	1	124061-226	COOLER BONNET-RETURN END
D	2	22708-728	COOLER GASKET-RETURN END
E	1	124060-225	COOLER BONNET-IN/OUT END
F	1	124060-226	COOLER BONNET-RETURN END

Cabinet (50 hp, air-cooled) - 143457-002



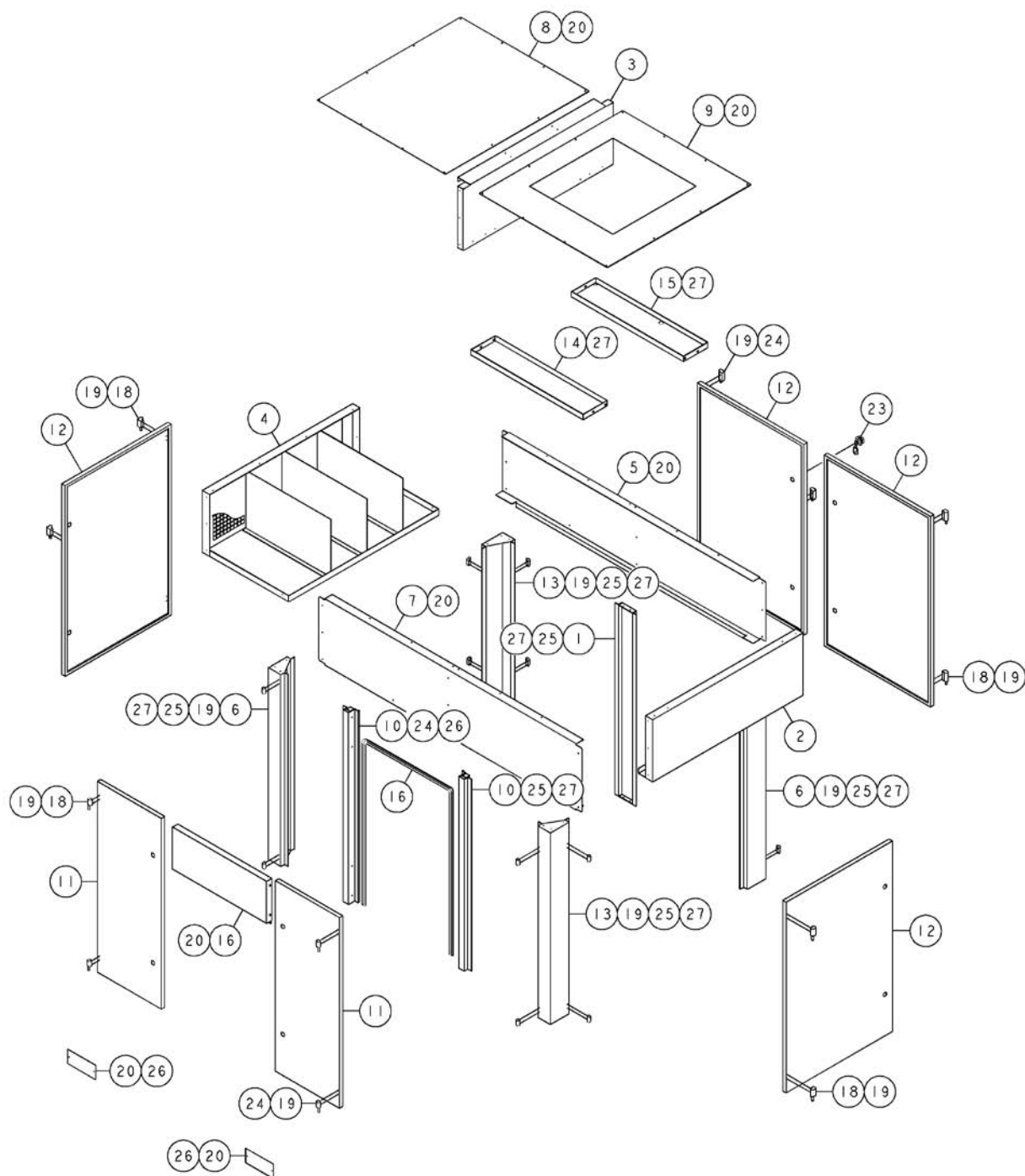
NOTES-UNLESS OTHERWISE SPECIFIED:
1) ITEM 20 (NOT SHOWN) IS TRIM AROUND SERVICE AIR LINE IN CABINET CORNER POST.
2) ITEM 21 (NOT SHOWN) IS SEAL AROUND DOORS.

Cabinet (50 hp, air-cooled) - 143457-002

ITEM NO.	QTY.	PART NUMBER	DESCRIPTION
1	1	142067-10	DOOR PANEL
2	1	142067-11	END PANEL
3	1	142067-12	CENTER DIVIDER PANEL
4	1	142067-13	INLET PANEL
5	1	142067-14	SIDE PANEL
6	2	142067-25	CORNER POST PANEL
7	1	142067-26	SIDE PANEL
8	1	142067-18	TOP PANEL
9	1	142067-19	EXHAUST PANEL
10	2	142067-21	FRONT DOOR POST PANEL
11	2	142067-22	DOOR PANEL
12	4	142067-23	DOOR PANEL
13	2	142067-24	CORNER POST PANEL
14	2	142067-16	COOLER BAFFLE
15	1	142067-28	GAUGE PANEL
16	8.3 FT	141527-1	PANEL TRIM
17	8	141526-1	CABINET HINGE
18	24	141588-J09	PAN HEAD SCREW-1/4-20 UNC X 0.63
19	64	141575-J07	PAN HEAD SCREW-1/4-20 UNC X 0.50
20	1.0 FT	20579	VIBRATION DAMPENER
21	59.5 FT	141528	RUBBER SEAL
22	12	128954-2	QUARTER TURN DOOR LATCH
23	4	141526-2	CABINET HINGE
24	16	110511-K10	HEX HEAD SCREW-ZINC, 5/16-18 UNC X 0.75
25	4	141991-1	BASE COVER PANEL
26	16	110511-J07	HEX HEAD SCREW-ZINC, 1/4-20 UNC X 0.50

@ INDICATES TORQUE VALUE IN FOOT POUNDS (LUBRICATED THREADS).

Cabinet (60 hp, air-cooled) - 143458-002



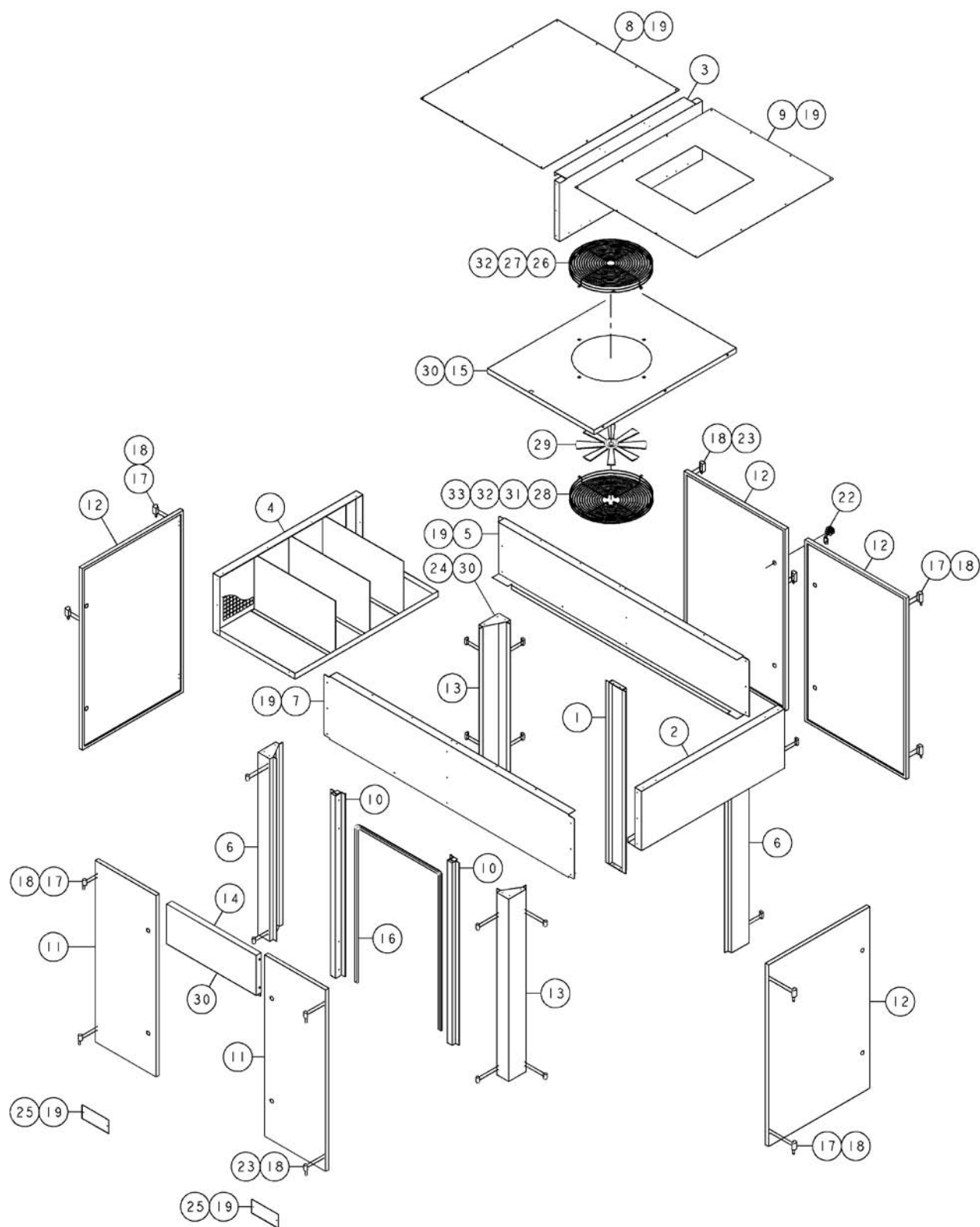
NOTES-UNLESS OTHERWISE SPECIFIED:
1) ITEM 21 (NOT SHOWN) IS TRIM AROUND SERVICE AIR LINE IN CABINET CORNER POST.
2) ITEM 22 (NOT SHOWN) IS SEAL AROUND DOORS.

Cabinet (60 hp, air-cooled) - 143458-002

ITEM NO.	QTY.	PART NUMBER	DESCRIPTION
1	1	142067-10	DOOR PANEL
2	1	142067-11	END PANEL
3	1	142067-12	CENTER DIVIDER PANEL
4	1	142067-13	INLET PANEL
5	1	142067-14	SIDE PANEL
6	2	142067-25	CORNER POST PANEL
7	1	142067-26	SIDE PANEL
8	1	142067-18	TOP PANEL
9	1	142067-19	EXHAUST PANEL
10	2	142067-21	FRONT DOOR POST PANEL
11	2	142067-22	DOOR PANEL
12	4	142067-23	DOOR PANEL
13	2	142067-24	CORNER POST PANEL
14	1	142067-15	COOLER BAFFLE
15	1	142067-16	COOLER BAFFLE
16	1	142067-28	GAUGE PANEL
17	8.3 FT	141527-1	PANEL TRIM
18	8	141526-1	CABINET HINGE
19	24	141588-J09	PAN HEAD SCREW-1/4-20 UNC X 0.63
20	64	141575-J07	PAN HEAD SCREW-1/4-20 UNC X 0.50
21	1.0 FT	20579	VIBRATION DAMPENER
22	59.5 FT	141528	RUBBER SEAL
23	12	128954-2	QUARTER TURN DOOR LATCH
24	4	141526-2	CABINET HINGE
25	16	110511-K10	HEX HEAD SCREW-ZINC, 5/16-18 UNC X 0.75
26	4	141991-1	BASE COVER PANEL
27	16	110511-J07	HEX HEAD SCREW-ZINC, 1/4-20 UNC X 0.50

@ INDICATES TORQUE VALUE IN FOOT POUNDS (LUBRICATED THREADS).

Cabinet (water-cooled) - 143436-098



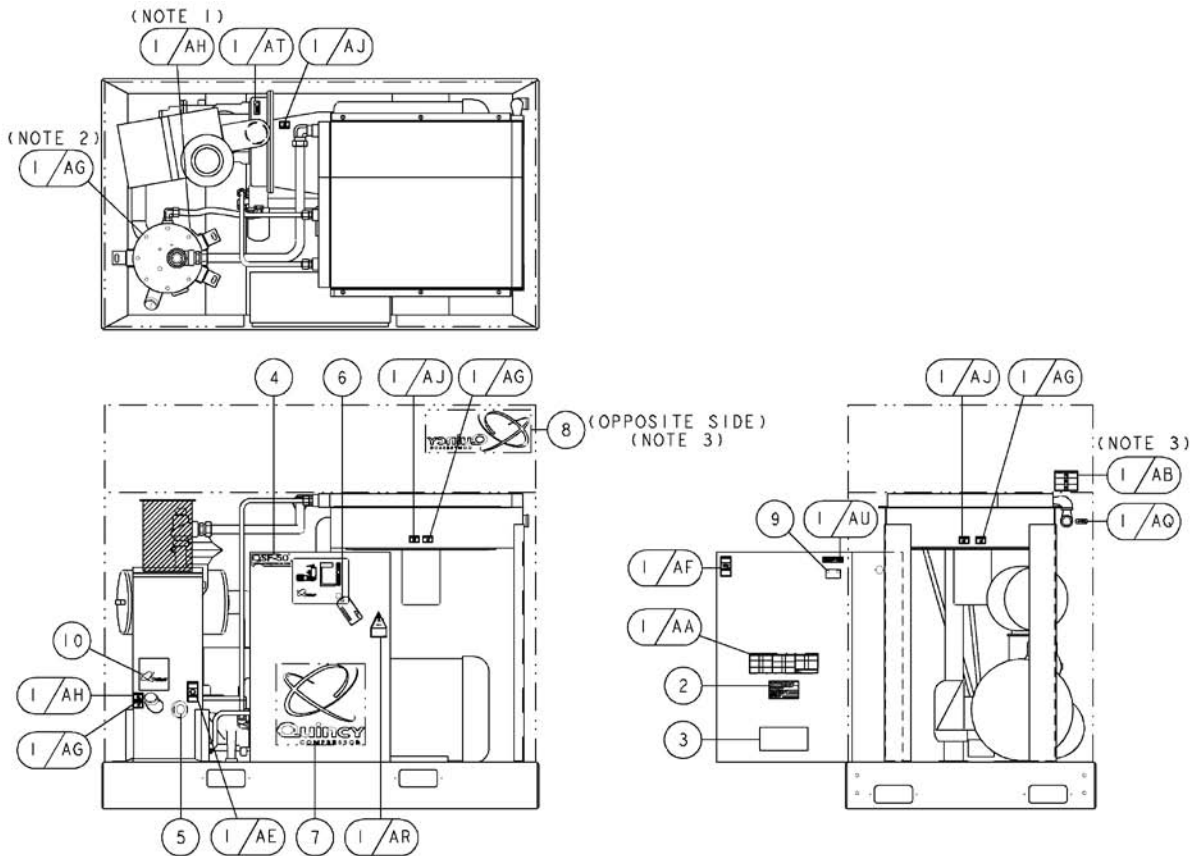
NOTES-UNLESS OTHERWISE SPECIFIED:
1) ITEM 20 (NOT SHOWN) IS TRIM AROUND SERVICE AIR
LINE AND COOLING WATER INLET/DRAIN IN CORNER POST.
2) ITEM 21 (NOT SHOWN) IS THE SEAL AROUND DOORS.

Cabinet (water-cooled) - 143436-098

ITEM NO.	QTY.	PART NUMBER	DESCRIPTION
1	1	142067-10	DOOR PANEL
2	1	142067-11	END PANEL
3	1	142067-12	CENTER DIVIDER PANEL
4	1	142067-13	INLET PANEL
5	1	142067-14	SIDE PANEL
6	2	142067-25	CORNER POST PANEL
7	1	142067-26	SIDE PANEL
8	1	142067-18	TOP PANEL
9	1	142067-19	EXHAUST PANEL
10	2	142067-21	FRONT DOOR POST PANEL
11	2	142067-22	DOOR PANEL
12	4	142067-23	DOOR PANEL
13	2	142067-24	CORNER POST PANEL
14	1	142067-28	GAUGE PANEL
15	1	142067-27	FAN PANEL
16	8.3 FT	141527-1	PANEL TRIM
17	8	141526-1	CABINET HINGE
18	48	142578-J07	CAP SCREW-ZINC, 1/4-20 UNC X 0.50, GRADE 5 (@ 6 FT-LBS)
19	52	141575-J07	PAN HEAD SCREW-1/4-20 UNC X 0.50
20	0.6 FT	20579	VIBRATION DAMPENER
21	58.8 FT	141528	RUBBER SEAL
22	12	128954-2	QUARTER TURN DOOR LATCH
23	4	141526-2	CABINET HINGE
24	16	110511-K10	HEX HEAD SCREW-ZINC, 5/16-18 UNC X 0.75
25	4	141991-1	BASE COVER PANEL
26	1	143061	FAN GUARD
27	4	141631-K10	CAP SCREW-5/16-18 UNC X 0.75, GRADE 5 (@ 23 FT-LBS)
28	1	141223	FAN GUARD
29	1	126511-034	FAN-8 BLADE, 16.0 O.D.
30	26	110511-J07	HEX HEAD SCREW-ZINC, 1/4-20 UNC X 0.50
31	4	123115-05C	LOCKWASHER, 0.31
32	8	110428W031	FLAT WASHER-0.31
33	4	112272-K02	SELF-LOCKING HEX NUT-ZINC, 5/16-18 UNC

@ INDICATES TORQUE VALUE IN FOOT POUNDS (LUBRICATED THREADS).

AIR-COOLED UNIT



NOTES-UNLESS OTHERWISE SPECIFIED:

1) ITEM 1/AH TO BE PLACED NEAR PRESSURE RELIEF VALVE.

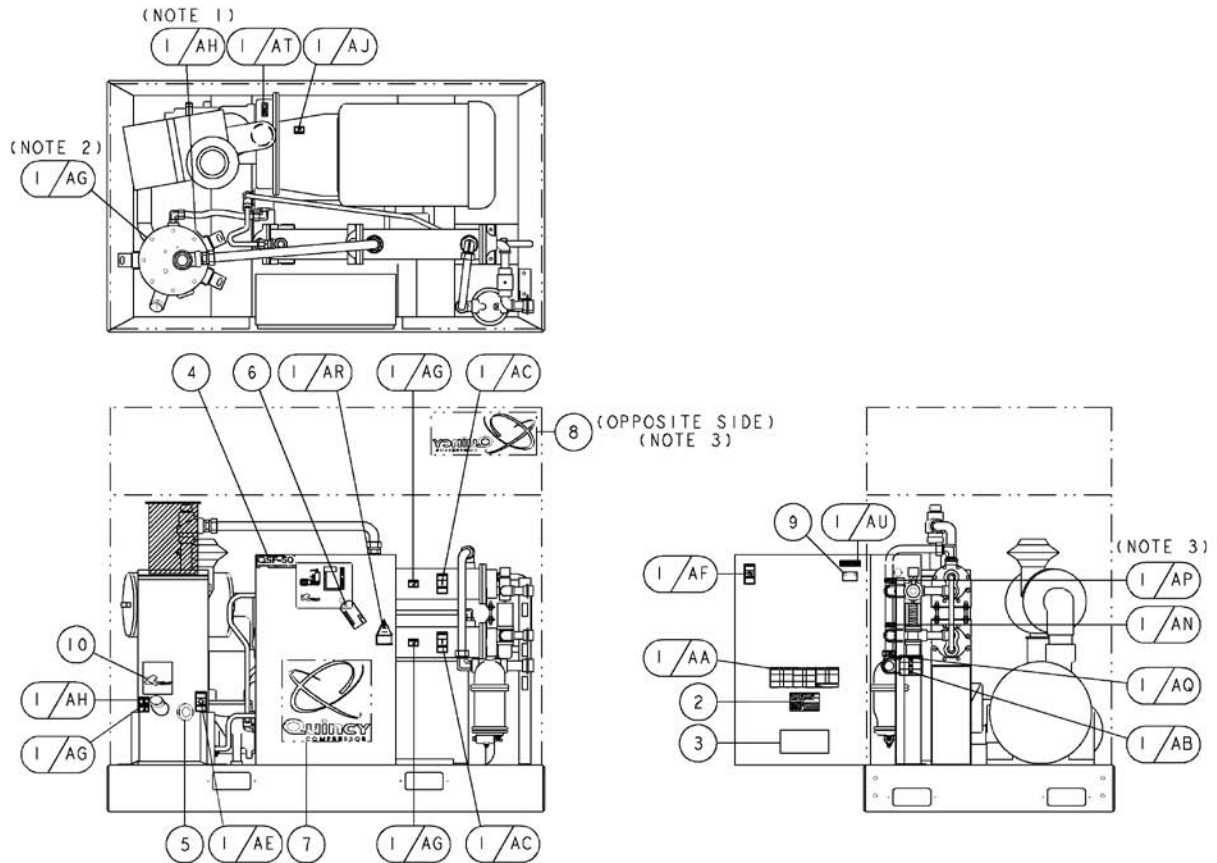
2) ITEM 1/AG TO BE PLACED ABOVE RESERVOIR INLET PIPE.

3) UNITS WITHOUT CABINET:

PLACE ITEMS 1/AB & 1/AQ ON OR AS NEAR AIR OUTLET AS POSSIBLE.

POSITION ITEM 8 WHEREVER POSSIBLE TO BE VISIBLE ON BACK SIDE OF UNIT.

WATER-COOLED UNIT



NOTES-UNLESS OTHERWISE SPECIFIED:

1) ITEM 1/AH TO BE PLACED NEAR PRESSURE RELIEF VALVE.

2) ITEM 1/AG TO BE PLACED ABOVE RESERVOIR INLET PIPE.

3) UNITS WITHOUT CABINET:

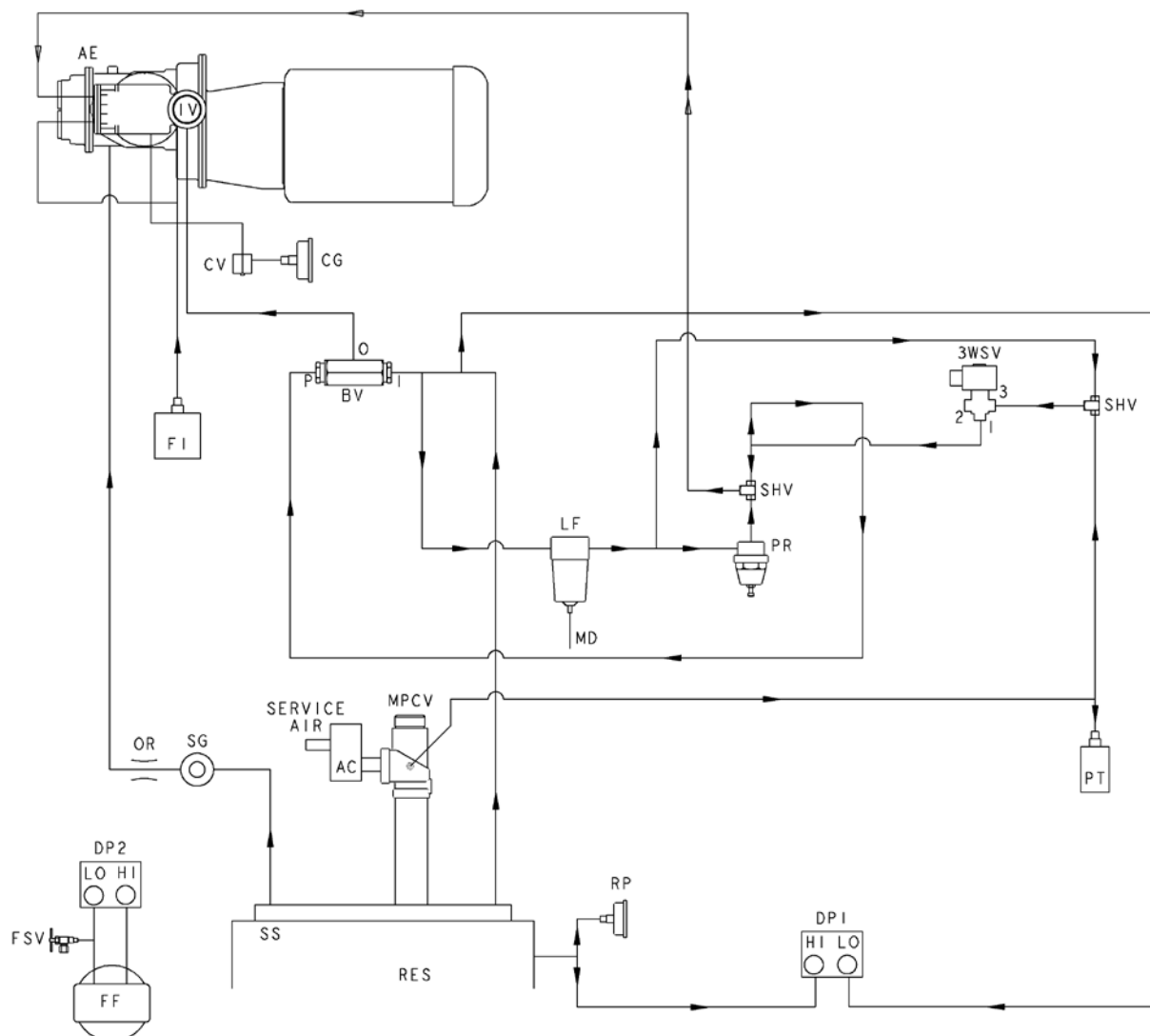
PLACE ITEMS 1/AB & 1/AQ ON OR AS NEAR AIR OUTLET AS POSSIBLE.

PLACE ITEMS 1/AN & 1/AP ON OR AS NEAR WATER INLET/OUTLET AS POSSIBLE

POSITION ITEM 8 WHEREVER POSSIBLE TO BE VISIBLE ON BACK SIDE OF UNIT.

ITEM NO.	QTY.	PART NUMBER	DESCRIPTION
1	1	146001	SAFETY DECAL SHEET
2	1	128198	GENUINE QUINCY COMPONENTS LABEL
3	1	110690-001	PLASTIC ENVELOPE
4	1	146012-050	DECAL-QSF-50
	1	146012-060	DECAL-QSF-60
5	1	142325	FLUID LEVEL DECAL
6	1	22177	TAG-FLUID TYPE SHIPPED WITH UNIT
7	1	146021-2	DECAL-Q/QUINCY, WHITE (15 INCH)
8	1	146002-4	DECAL-QUINCY LOGO, WHITE (17.5 INCH)
9	1	113058	CONTROL PANEL DECAL-UL LISTED
10	1	143861	DECAL-THIS MACHINE PROTECTED WITH QUINSYN PG™
	1	140519-3	DECAL-THIS MACHINE PROTECTED WITH QUINSYN XP®
	1	144048	DECAL-THIS MACHINE PROTECTED WITH QUINSYN PLUS
	1	128426	DECAL-THIS MACHINE PROTECTED WITH QUINSYN-F®

Control Schematic

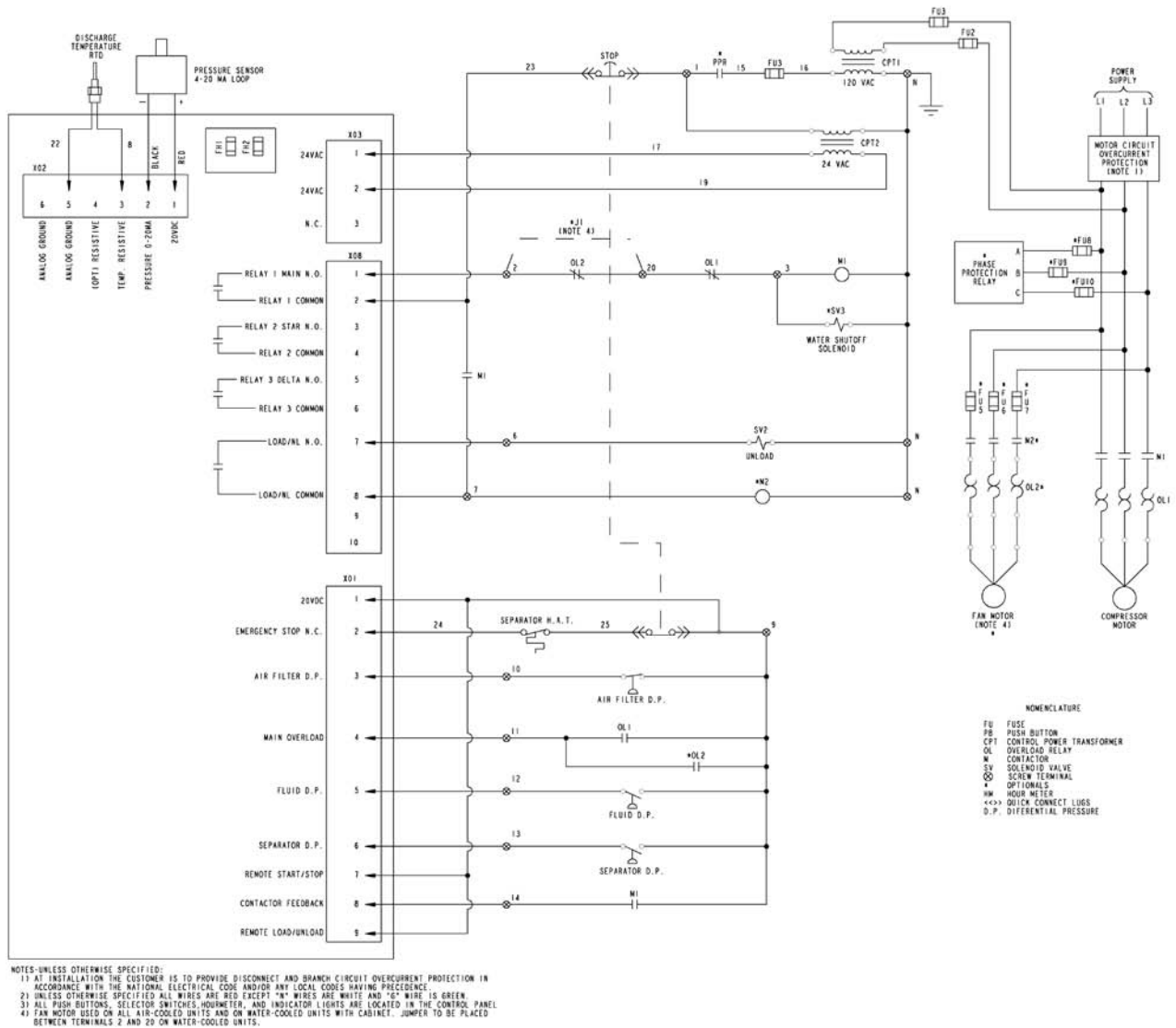


AC: AFTERCOOLER
 AE: AIREND
 BV: BLOWDOWN VALVE
 CG: CAPACITY GAUGE
 CV: CAPACITY VALVE
 DP1: DIFFERENTIAL PRESSURE SWITCH (SEPARATOR)
 DP2: DIFFERENTIAL PRESSURE SWITCH (FLUID FILTER)
 FF: FLUID FILTER
 FSV: FLUID SAMPLE VALVE
 IV: INLET VALVE
 LF: LINE FILTER

MD: MOISTURE DRAIN
 MPCV: MINIMUM PRESSURE CHECK VALVE
 OR: SCAVENGE ORIFICE (0.040)
 PR: PRESSURE REGULATOR
 PT: PRESSURE TRANSDUCER
 RES: RESERVOIR
 RP: RESERVOIR PRESSURE GAUGE
 SG: SCAVENGE SIGHTGLASS
 SHV: SHUTTLE VALVE
 SS: SEPARATOR SCAVENGE
 3WSV: 3-WAY SOLENOID VALVE

Electrical Control Diagram

WP2001A



Standard Terms and Conditions

Quincy Compressor and Ortman Fluid Power Divisions

LEGAL EFFECT: Except as expressly otherwise agreed to in writing by an authorized representative of Seller, the following terms and conditions shall apply to and form a part of this order and any additional and/or different terms of Buyer's purchase order or other form of acceptance are rejected in advance and shall not become a part of this order.

The rights of Buyer hereunder shall be neither assignable nor transferable except with the written consent of Seller.

This order may not be canceled or altered except with the written consent of Seller and upon terms which will indemnify Seller against all loss occasioned thereby. All additional costs incurred by Seller due to changes in design or specifications, modification of this order or revision of product must be paid for by Buyer.

In addition to the rights and remedies conferred upon Seller by this order, Seller shall have all rights and remedies conferred at law and in equity and shall not be required to proceed with the performance of this order if Buyer is in default in the performance of such order or of any other contract or order with seller.

TERMS OF PAYMENT: Unless otherwise specified in the order acknowledgment, the terms of payment shall be net cash within thirty (30) days after shipment. These terms shall apply to partial as well as complete shipments. If any proceeding be initiated by or against Buyer under any bankruptcy or insolvency law, or in the judgment of Seller the financial condition of Buyer, at the time the equipment is ready for shipment, does not justify the terms of payment specified, Seller reserves the right to require full payment in cash prior to making shipment. If such payment is not received within fifteen (15) days after notification of readiness for shipment, Seller may cancel the order as to any unshipped item and require payment of its reasonable cancellation charges.

If Buyer delays shipment, payments based on date of shipment shall become due as of the date when ready for shipment. If Buyer delays completion of manufacture, Seller may elect to require payment according to percentage of completion. Equipment held for Buyer shall be at Buyer's risk and storage charges may be applied at the discretion of Seller.

Accounts past due shall bear interest at the highest rate lawful to contract for but if there is no limit set by law, such interest shall be eighteen percent (18%). Buyer shall pay all cost and expenses, including reasonable attorney's fees, incurred in collecting the same, and no claim, except claims within Seller's warranty of material or workmanship, as stated below, will be recognized unless delivered in writing to Seller within thirty (30) days after date of shipment.

TAXES: All prices exclude present and future sales, use, occupation, license, excise, and other taxes in respect of manufacture, sales or delivery, all of which shall be paid by Buyer unless included in the purchase price at the proper rate or a proper exemption certificate is furnished.

ACCEPTANCE: All offers to purchase, quotations and contracts of sales are subject to final acceptance by an authorized representative at Seller's plant.

DELIVERY: Except as otherwise specified in this quotation, delivery will be F. O. B. point of shipment. In the absence of exact shipping instruction, Seller will use its discretion regarding best means of insured shipment. No liability will be accepted by Seller for so doing. All transportation charges are at Buyer's expense. Time of delivery is an estimate only and is based upon the receipt of all information and necessary approvals. The shipping schedule shall not be construed to limit seller in making commitments for materials or in fabricating articles under this order in accordance with Seller's normal and reasonable production schedules.

Seller shall in no event be liable for delays caused by fires, acts of God, strikes, labor difficulties, acts of governmental or military authorities, delays in transportation or procuring materials, or causes of any kind beyond Seller's control. No provision for liquidated damages for any cause shall apply under this order. Buyer shall accept delivery within thirty (30) days after receipt of notification of readiness for shipment. Claims for shortages will be deemed to have been waived if not made in writing within ten (10) days after the receipt of the material in respect of which any such shortage is claimed. Seller is not responsible for loss or damage in transit after having received "In Good Order" receipt from the carrier. All claims for loss or damage in transit should be made to the carrier.

Standard Terms and Conditions

Quincy Compressor and Ortman Fluid Power Divisions

TITLE & LIEN RIGHTS: The equipment shall remain personal property, regardless of how affixed to any realty or structure. Until the price (including any notes given therefore) of the equipment has been fully paid in cash, Seller shall, in the event of Buyer's default, have the right to repossess such equipment.

PATENT INFRINGEMENT: If properly notified and given an opportunity to do so with friendly assistance, Seller will defend Buyer and the ultimate user of the equipment from any actual or alleged infringement of any published United States patent by the equipment or any part thereof furnished pursuant hereto (other than parts of special design, construction, or manufacture specified by and originating with Buyer), and will pay all damages and costs awarded by competent court in any suit thus defended or of which it may have had notice and opportunity to defend as aforesaid.

STANDARD WARRANTY: Seller warrants that products of its own manufacture will be free from defects in workmanship and materials under normal use and service for the period specified in the product instruction manual. Warranty for service parts will be ninety (90) days from date of factory shipment. Electric Motors, gasoline and diesel engines, electrical apparatus and all other accessories, components and parts not manufactured by Seller are warranted only to the extent of the original manufacturer's warranty.

Notice of the alleged defect must be given to the Seller, in writing with all identifying details including serial number, type of equipment and date of purchase within thirty (30) days of the discovery of the same during the warranty period.

Seller's sole obligation on this warranty shall be, at its option, to repair or replace or refund the purchase price of any product or part thereof which proves to be defective. If requested by Seller, such product or part thereof must be promptly returned to seller, freight prepaid, for inspection.

Seller warrants repaired or replaced parts of its own manufacture against defects in materials and workmanship under normal use and service for ninety (90) days or for the remainder of the warranty on the product being repaired.

This warranty shall not apply and Seller shall not be responsible or liable for:

- (a) Consequential, collateral or special losses or damages;
- (b) Equipment conditions caused by fair wear and tear, abnormal conditions of use, accident, neglect or misuse of equipment, improper storage or damage resulting during shipping;
- (c) Deviation from operating instructions, specifications or other special terms of sale;
- (d) Labor charges, loss or damage resulting from improper operation, maintenance or repairs made by person(s) other than Seller or Seller's authorized service station.

In no event shall Seller be liable for any claims whether arising from breach of contract or warranty or claims of negligence or negligent manufacture in excess of the purchase price.

THIS WARRANTY IS THE SOLE WARRANTY OF SELLERS AND ANY OTHER WARRANTIES, WHETHER EXPRESS OR IMPLIED IN LAW OR IMPLIED IN FACT, INCLUDING ANY WARRANTIES OF MERCHANTABILITY AND FITNESS FOR PARTICULAR USE ARE HEREBY SPECIFICALLY EXCLUDED.

LIABILITY LIMITATIONS: Under no circumstances shall the Seller have any liability for liquidated damages or for collateral, consequential or special damages or for loss of profits, or for actual losses or for loss of production or progress of construction, whether resulting from delays in delivery or performance, breach of warranty, negligent manufacture or otherwise.

ENVIRONMENTAL AND OSHA REQUIREMENTS: At the time of shipment of the equipment from the factory, Quincy Compressor / Ortman Fluid Power will comply with the various Federal, State and local laws and regulations concerning occupational health and safety and pollution. However, in the installation and operation of the equipment and other matters over which the seller has no control, the Seller assumes no responsibility for compliance with those laws and regulations, whether by the way of indemnity, warranty or otherwise.

This image shows a single sheet of white paper with horizontal ruling lines. The lines are evenly spaced and run across the width of the page. There are no margins, text, or other markings on the paper.



Quincy Compressor Products: 217.222.7700
E-mail: info@quincycompressor.com
Website: quincycompressor.com



© 2006 Quincy Compressor
All Rights Reserved. Litho in U.S.A.