

GENERAL VIEW CONNECTION DIAGRAM FOR GX 7-11 - IEC VERSIONS:

FOR EACH SPECIFIC USE SEE THE PARTICULAR SERVICE DIAGRAMS

380V/ 400V/ 460V/ 500V 3PH w/o N, FF versions  
main compressor : 9828413000  
dryer transformer: 9828413400  
dryer : 9828440100

230V FF versions  
main compressor : 9828413100  
dryer : 9828440100

400V 3PH+N FF versions  
main compressor : 9828413200  
dryer : 9828440100

200V FF versions  
main compressor : 9828413800  
dryer autotransformer: 9828413500  
dryer : 9828440100

230V/ 380V/ 400V/ 460V/ 500V PACK versions  
main compressor : 9828413700

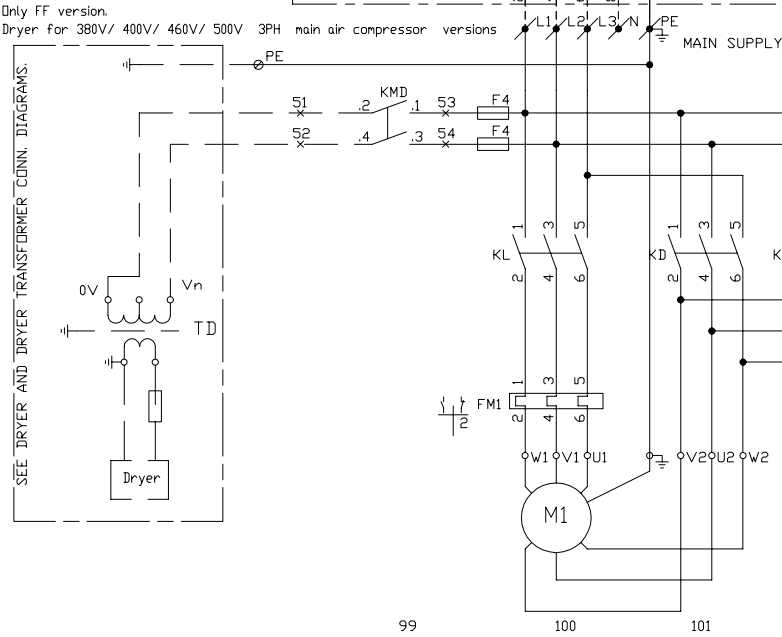
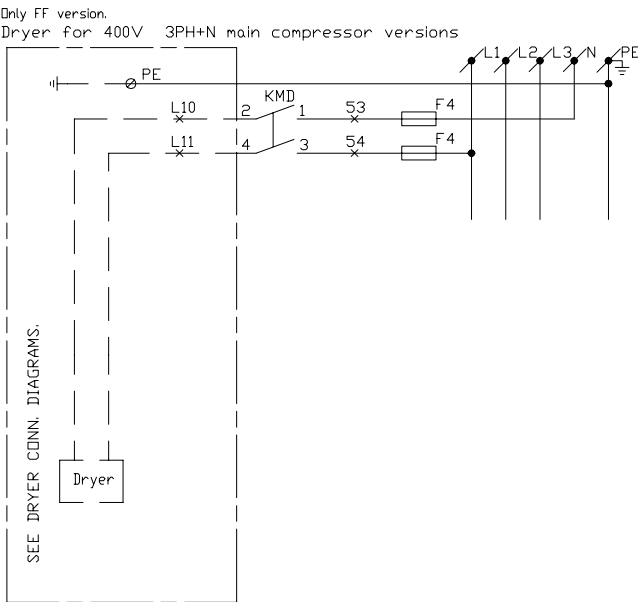
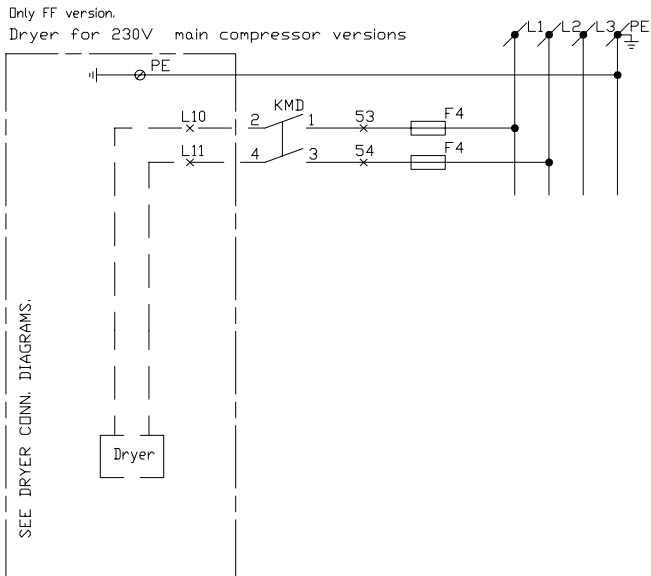
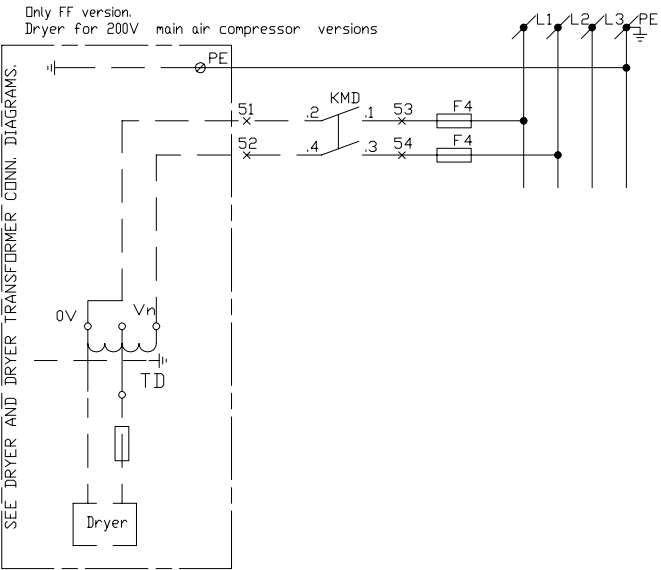
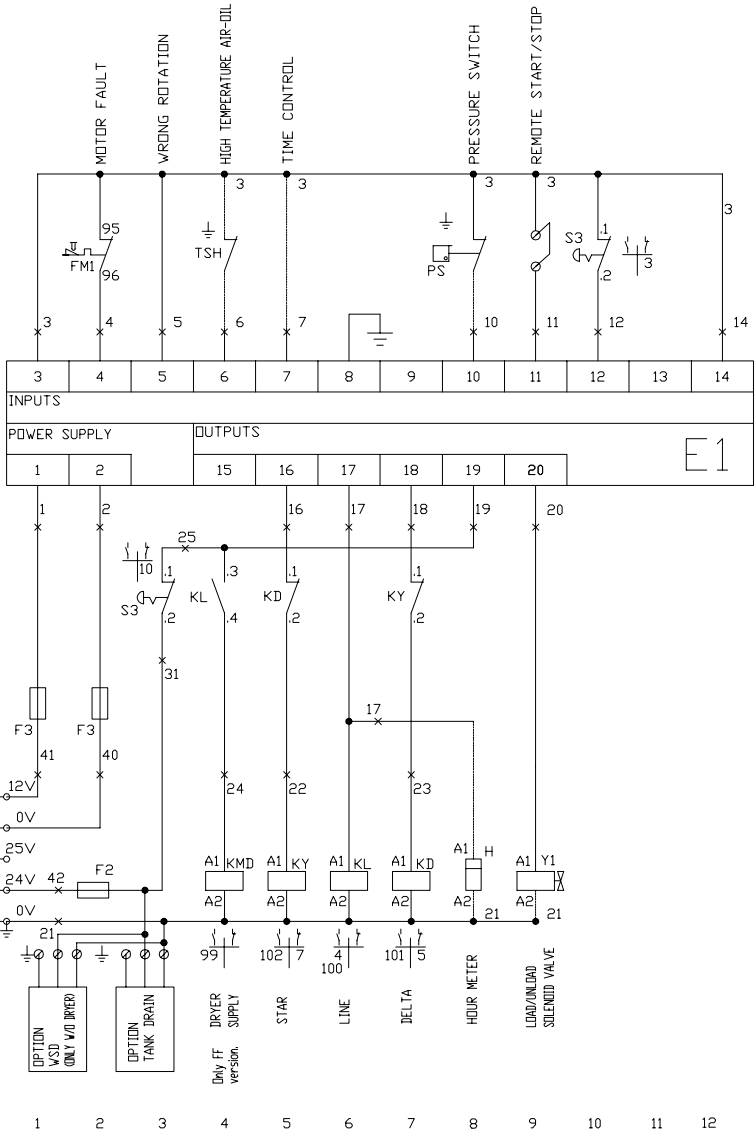
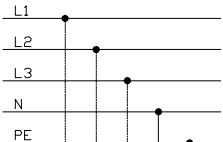
200V PACK versions  
main compressor : 9828413900

M1 : compressor motor  
PS : pressure switch  
TSH : temperature switch  
Y1 : solenoid valve  
E1 : compressor control module  
F1-4 : fuses  
FM1 : compressor motor overload relay  
KL : line contactor  
KY : star contactor  
KD : delta contactor  
KMD : dryer contactor  
S3 : emergency stop  
T1 : transformer  
H : hour meter  
F1,2,...: fuses

COMPRESSOR MAIN SUPPLY

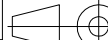
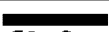
COMPULSORY INSTALLATION AT CUSTOMER CARE.

Motor circuit breaker + disconnector, D curve, with residual current device.



00		DN 08054211, CID23235, 20/02/2008	2008/02/20		
Nota	Post- tion	Gevraagd van Modified from	Datum Date	Ingev./Goedg. Intr./Appd.	

Parent 3D Model	Ed. Version 3D
-----------------	----------------

Tolerances, indien niet aangegeven, zijn volgens: Tolerances, if not indicated, according to:											
ATLAS COPCO STANDARD/Klasse/Class											
Benaming Name	DIAGRAM			GX7-11 IEC	Gehelmsklasse Secrecy Class						
Materiaal Material	SEE DRAWING			1102 K/ 2							
Behandeling Treatment	See Drawing			ACD							
		Schaal Scale	--	Familie Family	GX7-11	A2	Vergelk Compare	Eigenaar Drawing owner			
Getekend Drawn by		Ruw nr. Blank nr.		Vervangt Replaces		CAI					
Version Drwg 00		Ruw gew. Blank wt.	0	Kg	Afg gew. Finl wt.	0	Kg	Identificatie/Designation	Blad/Sheet ( )	01	01
Des gez./chd.		Prod gez./chd.		Goedg./Appd.		Datum/Date		2008/02/20			
Approved								9828414000			