

Atlas Copco Desiccant Dryers

BD 260, BD 390, BD 520, BD 780, BD 1050

Parts list

From following serial No. onwards :

AIF - 093964

- Copyright 2006, Atlas Copco Airpower n.v., Antwerp, Belgium.
Any unauthorized use or copying of the contents or any part thereof is prohibited. This applies in particular to trademarks, model denominations, part numbers and drawings.
- **Use only authorized parts.** Any damage or malfunction caused by the use of unauthorized parts is not covered by Warranty or Product Liability.

No. 2930 1393 02

Registration code : APC BD / 39

Replaces No. 2930 1393 01

2006-01

www.atlascopco.com

Atlas Copco

Contents
Inhoud
Innehåll
Inhaltsverzeichnis
Table des matières
Indice

Indice
Innholdsfortegnelse
Indice
Indholdsfortegnelse
Sisällysluettelo

Pressure vessels and main valves
Drukketels en belangrijkste kleppen
Tryckkäre och huvudventiler
Druckbehälter und Hauptventile
Réservoirs de pression et clapets principaux
Depósitos de presión y válvulas principales
Serbatoi a pressione e valvole principali
Trybeholdere og hovedventiler
Réservatórios de pressão e válvulas principais
Trykkbeholdere og hovedventiler
Ilmasäiliöt ja pääventtiilit

- BD 260	1
- BD 390	2
- BD 520	3
- BD 780	4
- BD 1050	5

Specific parts
Specifieke onderdelen
Specifika delar
Spezifische Teile
Pièces spécifiques
Piezas específicas
Parti speciali
Specielle dele
Peças específicas
Spesifikke deler
Erikoisosat

6

Contents
Inhoud
Innehåll
Inhaltsverzeichnis
Table des matières
Indice

Indice
Innholdsfortegnelse
Indice
Indholdsfortegnelse
Sisällysluettelo

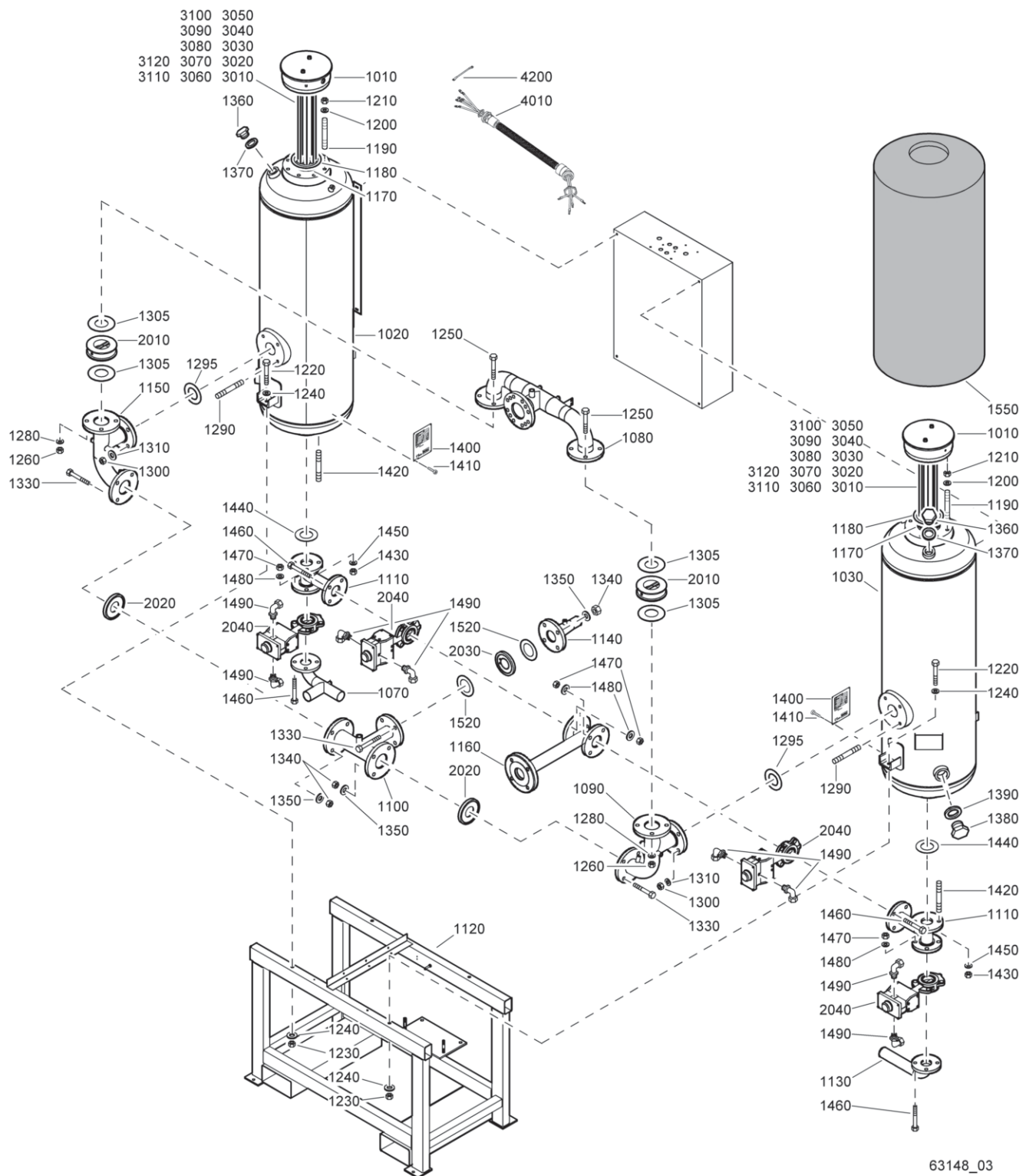
Cubicle
Kast
Skåp
Schaltschrank
Armoire
Armario
Armadio elettrico
Elskab
Quadro
Skap
Kotelo

- BD 260, BD 390 **7**
- BD 520, BD 780, BD 1050 **8**

Option
Optie
Tilläggsutrustning
Option
Option
Opción
Opzione
Ekstraudstyr
Opção
Tilleggsutstyr
Lisävaruste

- Filters BD 260, BD 390, BD 520 **9**
- Filters BD 780, BD 1050 **10**
- Minimum pressure valve without filters **11**
- PDP control and Sonic nozzle **12**

1

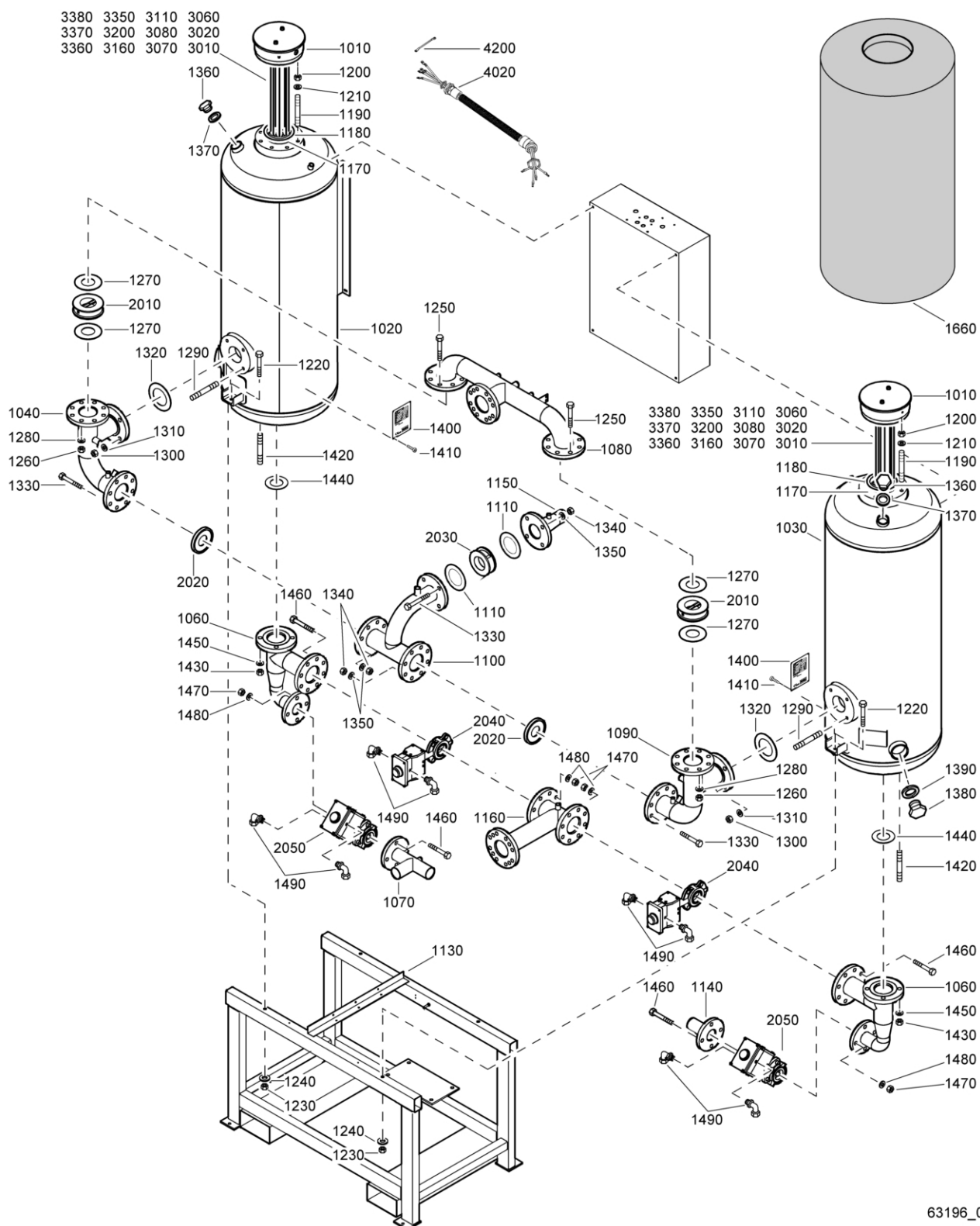


63148_03

Pressure vessels and main valves - BD 260

Ref.	Part number	Qty	Name	Remarks	Ref.	Part number	Qty	Name	Remarks
1010	1617 9720 00	2	Heater flange		1550	9827 0693 01	2	Insulation	
1020	1617 9258 99	1	Vessel		2010	1617 9021 02	2	Non return valve	
	1617 9258 84		CE		2020	1617 9025 02	2	Non return valve	
			SQL		2030	1617 9100 00	1	Checkvalve	
1030	1617 9257 99	1	Vessel		2040	1617 9072 81	4	Regeneration valve	
	1617 9257 84		CE			1617 9202 81		PDP-40	
1070	1617 9729 00	1	Pipe			1617 9080 00	• 1	Actuator	
1080	1617 9723 00	1	Pipe			1617 9067 00	• 1	Limit switch	
1090	1617 9724 00	1	Pipe		3010		6	Heater	
1100	1617 9726 00	1	Pipe			1617 9052 02		230V 3000W PDP-40	
1110	1617 9728 00	2	Pipe			1617 9052 09		230V 4000W PDP-70	
1120	1617 9547 00	1	Frame			1617 9052 09		380V 4000W PDP-40	
1130	1617 9730 00	1	Pipe			1617 9052 09		380V 4000W PDP-70	
1140	1617 9727 00	1	Pipe			1617 9052 02		400V 3000W PDP-40	
1150	1617 9725 00	1	Pipe			1617 9052 09		400V 4000W PDP-70	
1160	1617 9666 00	1	Tee			1617 9301 11		440V 4000W PDP-40	
1170	1617 9018 81	2	Top strainer			1617 9301 11		440V 4000W PDP-70	
1180	1617 9056 01	2	Gasket			1617 9052 10		500V 4000W PDP-40	
1190	0246 1954 97	16	Studbolt			1617 9052 10		500V 4000W PDP-70	
1200	0301 2378 00	16	Washer			1617 9301 12		575V 4000W PDP-40	
1210	0266 2114 00	16	Nut			1617 9301 12		575V 4000W PDP-70	
1220	0147 1417 03	4	Bolt			1617 9052 15		690V 3230W PDP-40	
1230	0266 2112 00	4	Nut		3020	0583 8181 22	2	Straight coupling	
1240	0302 0274 11	8	Washer		3030	0147 1247 02	2	Hex. head screw	
1250	0147 1492 03	8	Bolt		3040	0266 2107 00	2	Nut	
1260	0266 2114 00	8	Nut		3050			Spring washer	
1280	0301 2378 00	8	Washer			0333 2215 00	2	230V	
1290	0246 1954 97	8	Studbolt			0333 2215 00	2	380V	
1295	0650 0101 35	2	Gasket			0333 2215 00	2	400V	
1300	0266 2114 00	8	Nut			0333 2215 00	4	440V	
1305	0650 0101 36	4	Gasket			0333 2215 00	4	500V	
1310	0301 2378 00	8	Washer			0333 2215 00	4	575V	
1330	0147 1483 03	12	Bolt			0333 2215 00	4	690V	
1340	0266 2114 00	12	Nut		3060	1617 9222 00	2	Sensor pocket	
1350	0301 2378 00	12	Washer		3070	1617 9663 00	8	Heater plate	
1360	0686 3716 39	2	Plug		3080	1617 9056 01	2	Gasket	
1370	0653 1254 00	2	Flat gasket		3090	0129 3270 37	12	Blind rivet	
1380	0686 3716 43	2	Plug		3100	1617 9483 01	4	Connection plate	
1390	0653 1293 00	2	Flat gasket		3110	1617 9483 02	20	Connection plate	
1400	1617 9394 00	2	Data plate		3120	1617 9483 03	12	Connection plate	
1410	0244 4143 00	8	Drive screw		4010		1	Heater cable set	
1420	0246 1954 97	8	Studbolt			1617 9450 80		230V PDP-40	
1430	0266 2114 00	8	Nut			1617 9449 80		380V PDP-40	
1440	0650 0101 35	2	Gasket			1617 9449 80		400V PDP-40	
1450	0301 2378 00	8	Washer			1617 9449 80		440V PDP-40	
1460	0147 1489 03	16	Bolt			1617 9449 80		500V PDP-40	
1470	0266 2114 00	16	Nut			1617 9449 80		575V PDP-40	
1480	0301 2378 00	16	Washer			1617 9450 80		PDP-70	
1490	9090 1519 00	8	Coupling elbow		4200	1617 9400 00	4	Heaterconnection	
1520	0650 0100 63	2	Gasket						

2



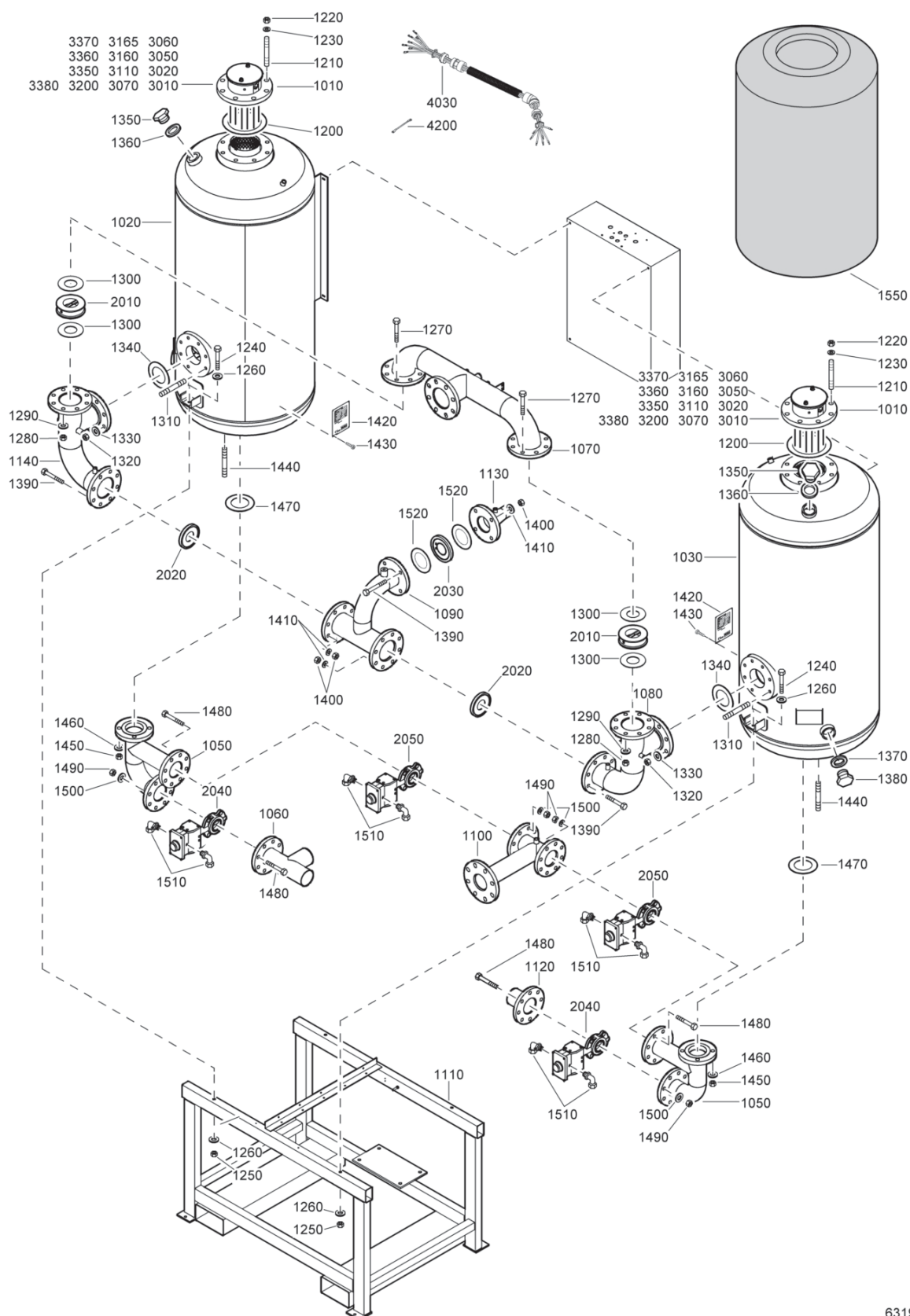
63196_03

63196_03

Pressure vessels and main valves - BD 390

Ref.	Part number	Qty	Name	Remarks	Ref.	Part number	Qty	Name	Remarks
1010	1617 9720 00	2	Heater		1490	9090 1519 00	8	Coupling elbow	
1020		1	Vessel		1660	9827 0693 02	2	Insulation	
	1617 9260 99		CE		2010	1617 9021 03	2	Non return valve	
	1617 9260 84		SQL		2020	1617 9025 03	2	Non return valve	
1030		1	Vessel		2030	1617 9104 00	1	Checkvalve	
	1617 9259 99		CE		2040		2	Butterfly valve	
	1617 9259 84		SQL			1617 9074 81		PDP-40	
1040	1617 9741 00	1	Pipe			1617 9203 81		PDP-70	
1060	1617 9745 00	2	Pipe			1617 9080 00 •	1	Actuator	
1070	1617 9746 00	1	Pipe			1617 9067 00 •	1	Limit switch	
1080	1617 9740 00	1	Pipe		2050		2	Regeneration valve	
1090	1617 9742 00	1	Pipe			1617 9072 81		PDP-40	
1100	1617 9744 00	1	Pipe			1617 9202 81		PDP-70	
1110	0650 0101 36	2	Gasket			1617 9080 00 •	1	Actuator	
1130	1617 9548 01	1	Frame			1617 9067 00 •	1	Limit switch	
1140	1617 9747 00	1	Pipe		3010		6	Heater	
1150	1617 9743 00	1	Pipe			1617 9052 03		230V 4000W PDP-40	
1160	1617 9667 00	1	Tee			1617 9052 05		230V 4500W PDP-70	
1170	1617 9018 82	1	Top strainer			1617 9052 05		380V 4500W PDP-40	
1180	1617 9056 01	2	Gasket			1617 9052 05		380V 4500W PDP-70	
1190	0246 1954 97	16	Studbolt			1617 9052 03		400V 4000W PDP-40	
1200	0266 2114 00	18	Nut			1617 9052 05		400V 4500W PDP-70	
1210	0301 2378 00	16	Washer			1617 9301 08		440V 4500W PDP-40	
1220	0147 1415 03	4	Bolt			1617 9301 08		440V 4500W PDP-70	
1230	0266 2112 00	4	Nut			1617 9052 06		500V 4500W PDP-40	
1240	0302 0274 11	4	Washer			1617 9052 06		500V 4500W PDP-70	
1250	0147 1493 03	8	Bolt			1617 9301 14		575V 4500W PDP-40	
1260	0266 2114 00	8	Nut			1617 9301 14		575V 4500W PDP-70	
1270	0650 0101 40	4	Gasket			1617 9052 16		690V 4200W PDP-40	
1280	0301 2378 00	8	Washer		3020	0583 8181 22	2	Straight coupling	
1290	0246 1954 97	8	Studbolt		3060	0147 1247 02	2	Hex. head screw	
1300	0266 2114 00	8	Nut		3070	0266 2107 00	2	Nut	
1310	0301 2378 00	8	Washer		3080	0333 2215 00	2	Spring washer	
1320	0650 0101 39	1	Gasket		3110	1617 9222 00	2	Sensor pocket	
1330	0147 1483 03	12	Bolt		3160	1617 9663 00	8	Heater plate	
1340	0266 2114 00	12	Nut		3200	1617 9056 01	2	Gasket	
1350	0301 2378 00	12	Washer		3350	0129 3270 37	12	Blind rivet	
1360	0686 3716 39	2	Plug		3360	1617 9483 01	4	Connection plate	
1370	0653 1254 00	2	Flat gasket		3370	1617 9483 02	20	Connection plate	
1380	0686 3716 43	2	Plug		3380	1617 9483 03	12	Connection plate	
1390	0653 1293 00	2	Flat gasket		4020		1	Heater cable set	
1400	1617 9394 00	2	Data plate			1617 9452 80		230V PDP-40	
1410	0244 4143 00	8	Drive screw			1617 9451 80		380V PDP-40	
1420	0246 1954 97	8	Studbolt			1617 9451 80		400V PDP-40	
1430	0266 2114 00	8	Nut			1617 9451 80		440V PDP-40	
1440	0650 0101 39	1	Gasket			1617 9451 80		500V PDP-40	
1450	0301 2378 00	8	Washer			1617 9451 80		575V PDP-40	
1460	0147 1489 03	16	Bolt			1617 9452 80		PDP-70	
1470	0266 2114 00	16	Nut		4200	1617 9400 00	4	Heaterconnection	
1480	0301 2378 00	16	Washer						

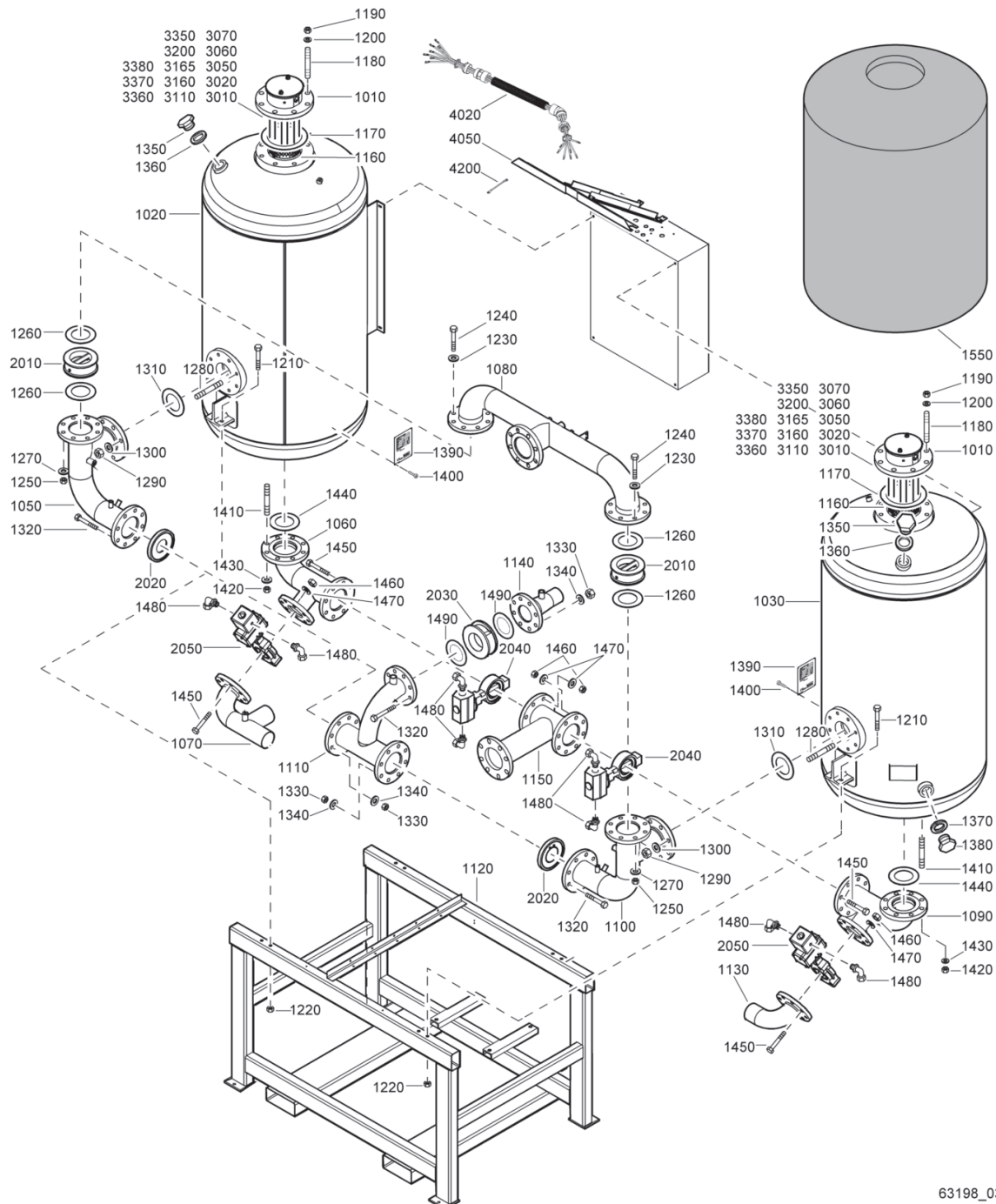
3



Pressure vessels and main valves - BD 520

Ref.	Part number	Qty	Name	Remarks	Ref.	Part number	Qty	Name	Remarks
1010	1617 9780 00	2	Heater flange		2050		2	Regeneration valve	
1020		1	Vessel			1617 9074 80		PDP-40	
	1617 9776 99		CE			1617 9203 80		PDP-70	
	1617 9776 84		SQL				1	Actuator	
1030		1	Vessel			1617 9080 00		PDP-40	
	1617 9775 99		CE			1617 9205 00		PDP-70	
	1617 9775 84		SQL			1617 9067 00	1	Limit switch	
1050	1617 9768 00	2	Pipe		3010		6	Heater	
1060	1617 9769 00	1	Pipe			1617 9052 23		230V 3000W PDP-40	
1070	1617 9763 00	1	Pipe			1617 9052 03		230V 4000W PDP-70	
1080	1617 9765 00	1	Pipe			1617 9052 03		380V 4000W PDP-40	
1090	1617 9766 00	1	Pipe			1617 9052 03		380V 4000W PDP-70	
1100	1617 9757 00	1	Tee			1617 9052 23		400V 3000W PDP-40	
1110	1617 9150 00	1	Frame			1617 9052 03		400V 4000W PDP-70	
1120	1617 9770 00	1	Pipe			1617 9301 07		440V 4000W PDP-40	
1130	1617 9767 00	1	Pipe			1617 9301 07		440V 4000W PDP-70	
1140	1617 9764 00	1	Pipe			1617 9052 10		500V 4000W PDP-40	
1200	1617 9056 02	2	Gasket			1617 9052 10		500V 4000W PDP-70	
1210	0246 1955 01	16	Studbolt			1617 9301 12		575V 4000W PDP-40	
1220	0266 2116 00	16	Nut			1617 9301 12		575V 4000W PDP-70	
1230	0300 0274 13	16	Washer			1617 9052 15		690V 3230W PDP-40	
1240	0147 1418 03	4	Bolt		3020	0583 8181 22	2	Straight coupling	
1250	0266 2112 00	4	Nut		3050	0147 1247 02	2	Hex. head screw	
1260	0300 0274 11	8	Washer		3060	0266 2107 00	2	Nut	
1270	0147 1494 03	16	Bolt		3070			Spring washer	
1280	0266 2114 00	16	Nut			0333 2215 00	4	230V	
1290	0301 2378 00	16	Washer			0333 2215 00	2	380V	
1300	0650 0101 41	4	Gasket			0333 2215 00	4	400V	
1310	0246 1954 98	16	Stud bolt			0333 2215 00	2	440V	
1320	0266 2114 00	16	Nut			0333 2215 00	4	500V	
1330	0301 2378 00	16	Washer			0333 2215 00	4	575V	
1340	0650 0101 42	2	Gasket			0333 2215 00	4	690V	
1350	0686 3716 43	2	Plug		3110	1617 9222 00	2	Sensor pocket	
1360	0653 1293 00	2	Flat gasket		3160	1617 9657 00	4	Heater	
1370	0686 3716 43	2	Plug		3165	1617 9657 01	6	Heater plate	
1380	0653 1293 00	2	Flat gasket		3200		2	Gasket	
1390	0147 1485 03	24	Bolt			1617 9056 02		230V 3000W PDP-40	
1400	0266 2114 00	24	Nut			1617 9056 01		230V 4000W PDP-70	
1410	0301 2378 00	24	Washer			1617 9056 02		380V 4000W PDP-40	
1420	1617 9394 00	2	Data plate			1617 9056 02		380V 4000W PDP-70	
1430	0244 4143 00	8	Drive screw			1617 9056 02		400V 3000W PDP-40	
1440	0246 1954 97	16	Studbolt			1617 9056 01		400V 4000W PDP-70	
1450	0266 2114 00	16	Nut			1617 9056 02		440V 4000W PDP-40	
1460	0301 2378 00	2	Washer			1617 9056 02		440V 4000W PDP-70	
1470	0650 0101 42	16	Gasket			1617 9056 02		500V 4000W PDP-40	
1480	0147 1491 03	32	Bolt			1617 9056 01		500V 4000W PDP-70	
1490	0266 2114 00	32	Nut			1617 9056 01		575V 4000W PDP-40	
1500	0650 0101 42	32	Gasket			1617 9056 01		575V 4000W PDP-70	
1510	9090 1519 00	8	Coupling elbow			1617 9056 01		690V 3230W PDP-40	
1520	0650 0100 20	2	Gasket		3350	0129 3270 37	24	Blind rivet	
1550	9827 0693 03	2	Insulation		3360	1617 9483 01	8	Connection plate	
2010	1617 9021 04	2	Non return valve		3370	1617 9483 02	40	Connection plate	
2020	1617 9025 04	2	Non return valve		3380	1617 9483 03	24	Connection plate	
2030	1617 9105 00	1	Checkvalve		4030		1	Heater cable set	
2040		2	Butterfly valve			1617 9454 80		230V PDP-40	
	1617 9074 81		PDP-40			1617 9453 80		380V PDP-40	
	1617 9203 81		PDP-70			1617 9453 80		400V PDP-40	
	1617 9080 00	1	Actuator			1617 9453 80		440V PDP-40	
	1617 9067 00	1	Limit switch			1617 9453 80		500V PDP-40	
						1617 9453 80		575V PDP-40	
						1617 9454 80		PDP-70	
					4200	1617 9400 00	4	Heaterconnection	

4

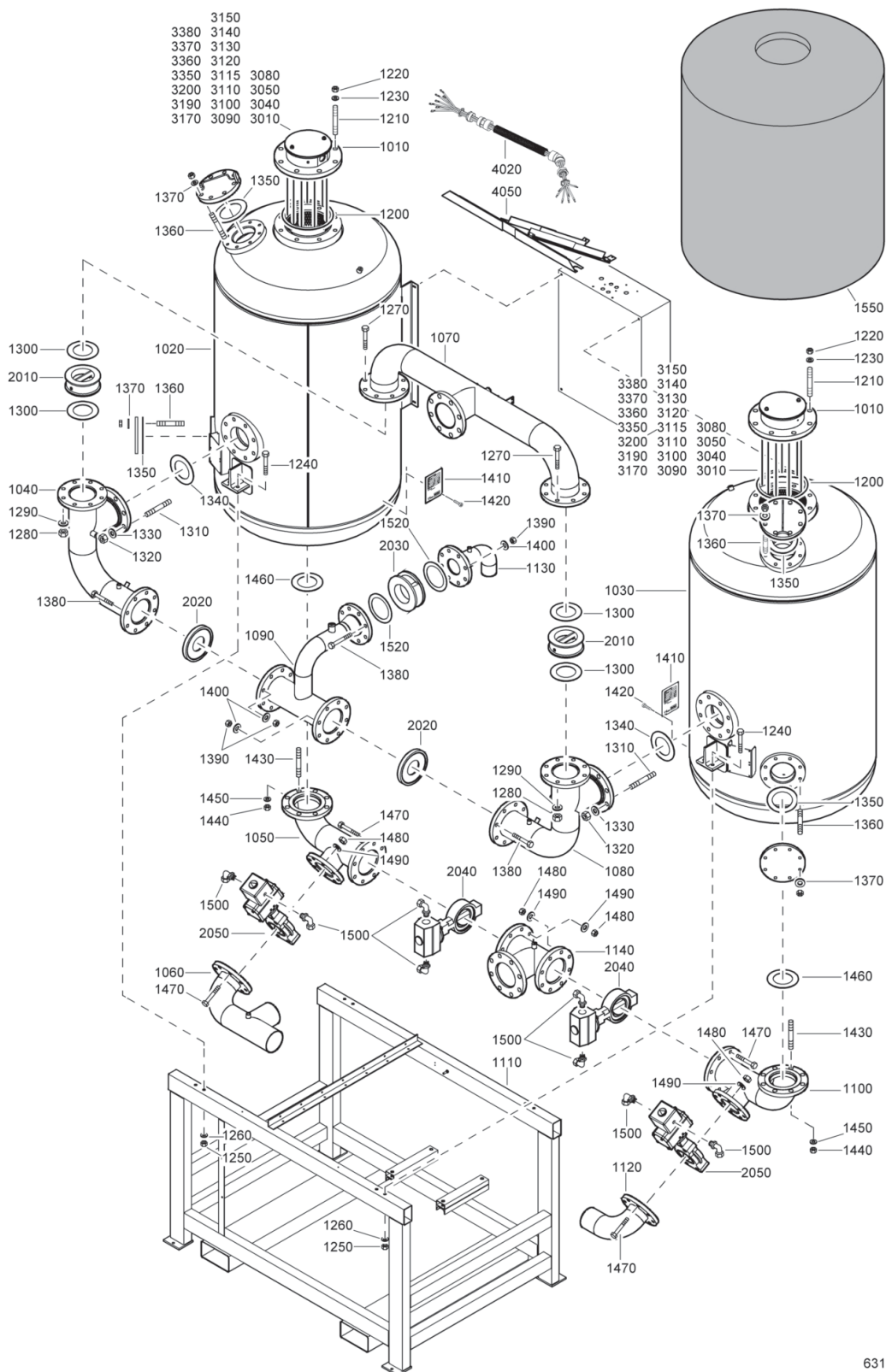


63198_03

Pressure vessels and main valves - BD 780

Ref.	Part number	Qty	Name	Remarks	Ref.	Part number	Qty	Name	Remarks
1010	1617 9780 00	2	Heater flange		2050		2	Regeneration valve	
1020		1	Vessel			1617 9074 80		PDP-40	
	1617 9264 99		CE			1617 9203 80		PDP-70	
	1617 9264 84		SQL				• 1	Actuator	
1030		1	Vessel			1617 9080 00		PDP-40	
	1617 9263 99		CE			1617 9205 00		PDP-70	
	1617 9263 84		SQL			1617 9067 00	• 1	Limit switch	
1050	1617 9784 00	1	Pipe		3010		6	Heater	
1060	1617 9788 00	1	Pipe			1617 9052 05		380V 4500W PDP-40	
1070	1617 9790 00	1	Pipe			1617 9052 05		380V 4500W PDP-70	
1080	1617 9783 00	1	Pipe			1617 9052 03		400V 4000W PDP-40	
1090	1617 9789 00	1	Pipe			1617 9052 05		400V 4500W PDP-70	
1100	1617 9785 00	1	Pipe			1617 9301 08		440V 4500W PDP-40	
1110	1617 9786 00	1	Pipe			1617 9301 08		440V 4500W PDP-70	
1120	1617 9014 00	1	Frame			1617 9052 06		500V 4500W PDP-40	
1130	1617 9791 00	1	Pipe			1617 9052 06		500V 4500W PDP-70	
1140	1617 9787 00	1	Pipe			1617 9301 14		575V 4500W PDP-40	
1150	1617 9668 00	1	Tee			1617 9301 14		575V 4500W PDP-70	
1160	1617 9018 83	2	Top strainer			1617 9052 16		690V 4200W PDP-40	
1170	1617 9056 02	2	Gasket		3020	0583 8181 22	2	Straight coupling	
1180	0246 1955 01	16	Studbolt		3050	0147 1247 02	2	Hex. head screw	
1190	0266 2116 00	16	Nut		3060	0266 2107 00	2	Nut	
1200	0300 0274 13	16	Washer		3070			Spring washer	
1210	0147 1418 03	8	Bolt			0333 2215 00	4	380V	
1220	0266 2112 00	8	Nut			0333 2215 00	4	400V	
1230	0300 0274 13	16	Washer			0333 2215 00	2	440V	
1240	0147 1494 03	16	Bolt			0333 2215 00	2	500V	
1250	0266 2114 00	16	Nut			0333 2215 00	4	575V	
1260	0650 0101 41	4	Gasket			0333 2215 00	4	690V	
1270	0301 2378 00	16	Washer		3110	1617 9222 00	2	Sensor pocket	
1280	0246 1954 98	16	Stud bolt		3160	1617 9657 00	4	Heater	
1290	0266 2114 00	16	Nut		3165	1617 9657 01	6	Heater plate	
1300	0301 2378 00	16	Washer		3200		2	Gasket	
1310	0650 0101 42	2	Gasket			1617 9056 02		380V 4500W PDP-40	
1320	0147 1485 03	24	Bolt			1617 9056 02		380V 4500W PDP-70	
1330	0266 2114 00	24	Nut			1617 9056 02		400V 4000W PDP-40	
1340	0301 2378 00	24	Washer			1617 9056 01		400V 4500W PDP-70	
1350	0686 3716 43	2	Plug			1617 9056 02		440V 4500W PDP-40	
1360	0653 1293 00	2	Flat gasket			1617 9056 02		440V 4500W PDP-70	
1370	0653 1293 00	2	Flat gasket			1617 9056 02		500V 4500W PDP-40	
1380	0686 3716 43	2	Plug			1617 9056 01		500V 4500W PDP-70	
1390	1617 9394 00	2	Data plate			1617 9056 01		575V 4500W PDP-40	
1400	0244 4143 00	8	Drive screw			1617 9056 01		575V 4500W PDP-70	
1410	0246 1954 97	16	Studbolt			1617 9056 01		690V 4200W PDP-40	
1420	0266 2114 00	16	Nut		3350	0129 3270 37	24	Blind rivet	
1430	0301 2378 00	2	Washer		3360	1617 9483 01	8	Connection plate	
1440	0650 0101 42	16	Gasket		3370	1617 9483 02	40	Connection plate	
1450	0147 1492 03	32	Bolt		3380	1617 9483 03	24	Connection plate	
1460	0266 2114 00	32	Nut		4020		1	Heater cable set	
1470	0650 0101 42	32	Gasket			1617 9455 80		380V PDP-40	
1480	9090 1519 00	8	Coupling elbow			1617 9455 80		400V PDP-40	
1490	0650 0100 20	2	Gasket			1617 9455 80		440V PDP-40	
1550	9827 0693 04	2	Insulation			1617 9455 80		500V PDP-40	
2010	1617 9021 04	2	Non return valve			1617 9455 80		575V PDP-40	
2020	1617 9025 04	2	Non return valve			1617 9903 80		PDP-70	
2030	1617 9105 00	1	Checkvalve		4050	1617 9342 02	1	Cable guide	
2040		2	Butterfly valve		4200	1617 9400 00	4	Heaterconnection	
	1617 9075 81		PDP-40						
	1617 9204 81		PDP-70						
	1617 9063 00	• 1	Actuator						
	1617 9067 00	• 1	Limit switch						

5



63199_03

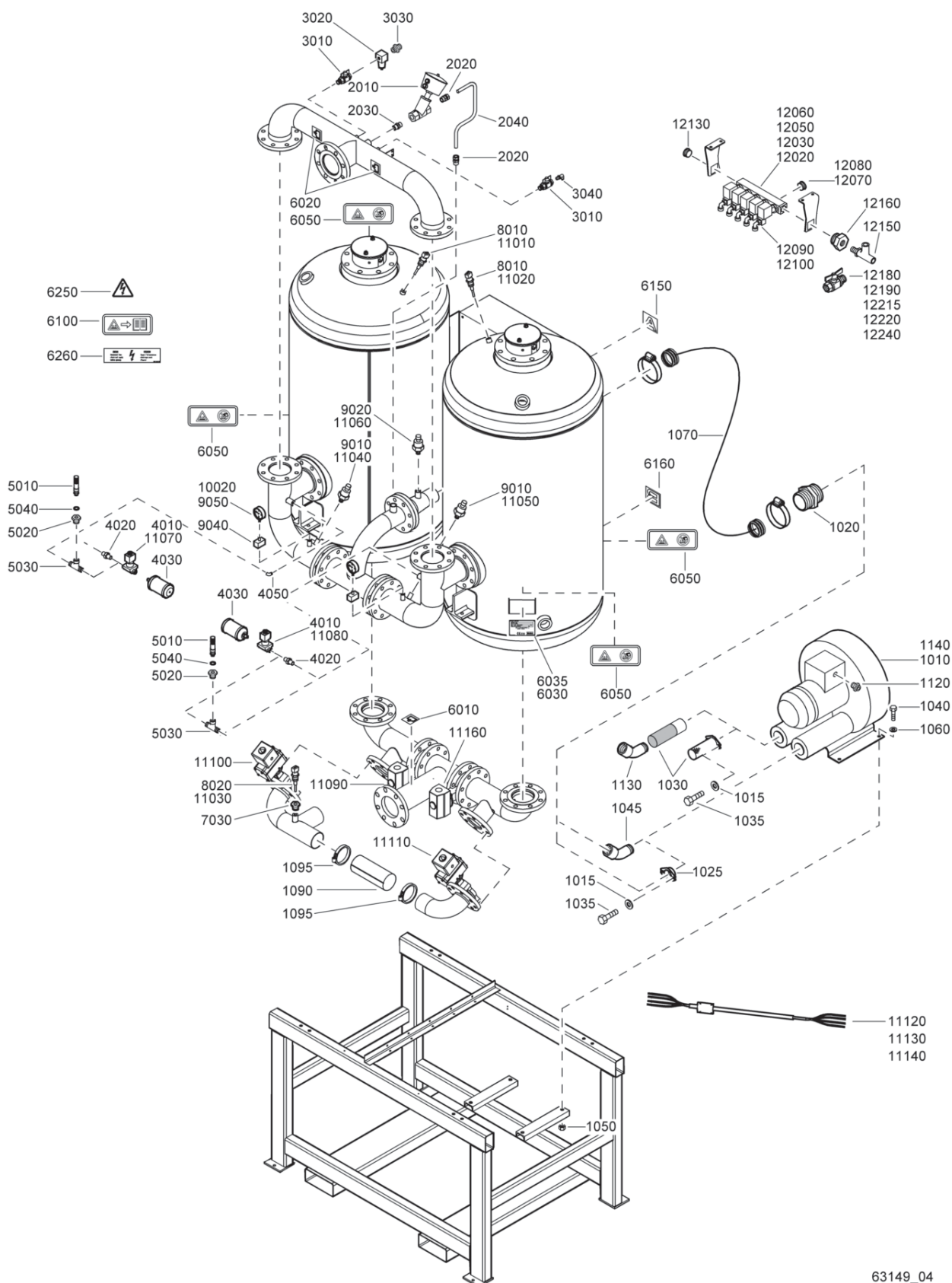
63199_03

Ref.	Part number	Qty	Name	Remarks	Ref.	Part number	Qty	Name	Remarks
1010	1617 9800 00	2	Heater flange		1030		1	Vessel	
1020		1	Vessel			1617 9278 99		CE	
	1617 9279 99		CE			1617 9278 84		SQL	
	1617 9279 84		SQL			1617 9278 96		MOM	
	1617 9279 96		MOM		1040	1617 9805 00	1	Pipe	

Pressure vessels and main valves - BD 1050

Ref.	Part number	Qty	Name	Remarks	Ref.	Part number	Qty	Name	Remarks
1050	1617 9808 00	1	Pipe			1617 9052 10		500V 4000W PDP-70	
1060	1617 9810 00	1	Pipe			1617 9052 10		575V 4000W PDP-40	
1070	1617 9803 00	1	Pipe			1617 9301 12		575V 4000W PDP-70	
1080	1617 9804 00	1	Pipe			1617 9052 16		690V 4200W PDP-40	
1090	1617 9806 00	1	Pipe		3040	0266 2107 00	2	Nut	
1100	1617 9809 00	1	Pipe		3050	0333 2215 00	4	Spring washer	
1110	1617 9551 00	1	Frame		3080	0147 1247 02	2	Hex. head screw	
1120	1617 9811 00	1	Pipe		3090	1617 9117 01	3	Connection plate	
1130	1617 9807 00	1	Pipe		3100	1617 9117 02	5	Connection plate	
1140	1617 9669 00	1	Tee		3110	1617 9117 03	2	Connection plate	
1200	1617 9056 03	2	Gasket		3115	1617 9222 00	2	Sensor pocket	
1210	0246 1955 01	16	Studbolt		3120	1617 9117 04	1	Connection plate	
1220	0266 2116 00	16	Nut		3130			Hexagon nut	
1230	0300 0274 13	16	Washer			0266 1108 02	24	380V 3000W PDP-40	
1240	0147 1494 03	4	Bolt			0266 1108 02	24	380V 3000W PDP-70	
1250	0266 2112 00	4	Nut			0266 1108 02	12	400V 3000W PDP-40	
1260	0300 0274 11	8	Washer			0266 1108 02	24	400V 4000W PDP-70	
1270	0147 1494 03	16	Bolt			0266 1108 02	24	440V 4000W PDP-40	
1280	0266 2114 00	16	Nut			0266 1108 02	24	440V 4000W PDP-70	
1290	0301 2378 00	16	Washer			0266 1108 02	12	500V 4000W PDP-40	
1300	0650 0101 43	4	Gasket			0266 1108 02	24	500V 4000W PDP-70	
1310	0246 1955 01	16	Studbolt			0266 1108 02	12	575V 4000W PDP-40	
1320	0266 2116 00	16	Nut			0266 1108 02	24	575V 4000W PDP-70	
1330	0300 0274 13	16	Washer			0266 1108 02	12	690V 4200W PDP-40	
1340	0650 0101 44	2	Gasket		3140			Spring washer	
1350	0650 0101 42	4	Gasket			0333 2174 35	24	380V 3000W PDP-40	
1360	0246 1954 97	32	Studbolt			0333 2174 35	24	380V 3000W PDP-70	
1370	0301 2378 00	32	Washer			0333 2174 35	12	400V 3000W PDP-40	
1380	0147 1485 03	24	Bolt			0333 2174 35	24	400V 4000W PDP-70	
1390	0266 2114 00	24	Nut			0333 2174 35	24	440V 4000W PDP-40	
1400	0301 2378 00	24	Washer			0333 2174 35	24	440V 4000W PDP-70	
1410	1617 9394 00	2	Data plate			0333 2174 35	12	500V 4000W PDP-40	
1420	0244 4143 00	8	Drive screw			0333 2174 35	24	500V 4000W PDP-70	
1430	0246 1955 01	16	Studbolt			0333 2174 35	12	575V 4000W PDP-40	
1440	0266 2116 00	16	Nut			0333 2174 35	24	575V 4000W PDP-70	
1450	0300 0274 13	16	Washer		3150			690V 4200W PDP-40	
1460	0650 0101 44	16	Gasket					Hex. head screw	
1470	0147 1494 03	32	Bolt			0147 1247 02	12	380V 3000W PDP-40	
1480	0266 2114 00	32	Nut			0147 1247 02	12	380V 3000W PDP-70	
1490	0650 0101 42	32	Gasket			0147 1247 02	6	400V 3000W PDP-40	
1500	9090 1519 00	8	Coupling elbow			0147 1247 02	12	400V 4000W PDP-70	
1520	0650 0100 26	2	Gasket			0147 1247 02	12	440V 4000W PDP-40	
1550	9827 0693 05	2	Insulation			0147 1247 02	12	440V 4000W PDP-70	
2010	1617 9021 05	2	Non return valve			0147 1247 02	6	500V 4000W PDP-40	
2020	1617 9025 05	2	Non return valve			0147 1247 02	12	500V 4000W PDP-70	
2030	1617 9108 00	1	Checkvalve			0147 1247 02	6	575V 4000W PDP-40	
2040		2	Butterfly valve			0147 1247 02	12	575V 4000W PDP-70	
	1617 9076 80		PDP-40			0147 1247 02	6	690V 4200W PDP-40	
	1617 9049 80		PDP-70		3170	1617 9659 00	2	Heater	
	1617 9200 00 •	1	Actuator		3190	1617 9659 01	6	Heater plate	
	1617 9067 00 •	1	Limit switch		3200	1617 9056 03	2	Gasket	
2050		2	Regeneration valve		3350	0129 3270 37	36	Blind rivet	
	1617 9075 80		PDP-40		3360	1617 9483 01	12	Connection plate	
	1617 9204 81		PDP-70		3370	1617 9483 02	60	Connection plate	
	1617 9063 00 •	1	Actuator		3380	1617 9483 03	36	Connection plate	
	1617 9067 00 •	1	Limit switch		4020		1	Heater cable set	
3010		6	Heater			1617 9447 80		380V PDP-40	
	1617 9052 02		380V 3000W PDP-40			1617 9447 80		400V PDP-40	
	1617 9052 02		380V 3000W PDP-70			1617 9447 80		440V PDP-40	
	1617 9052 02		400V 3000W PDP-40			1617 9447 80		500V PDP-40	
	1617 9052 03		400V 4000W PDP-70			1617 9447 80		575V PDP-40	
	1617 9301 07		440V 4000W PDP-40			1617 9448 80		PDP-70	
	1617 9301 07		440V 4000W PDP-70		4050	1617 9342 02	1	Cable guide	
	1617 9052 10		500V 4000W PDP-40						

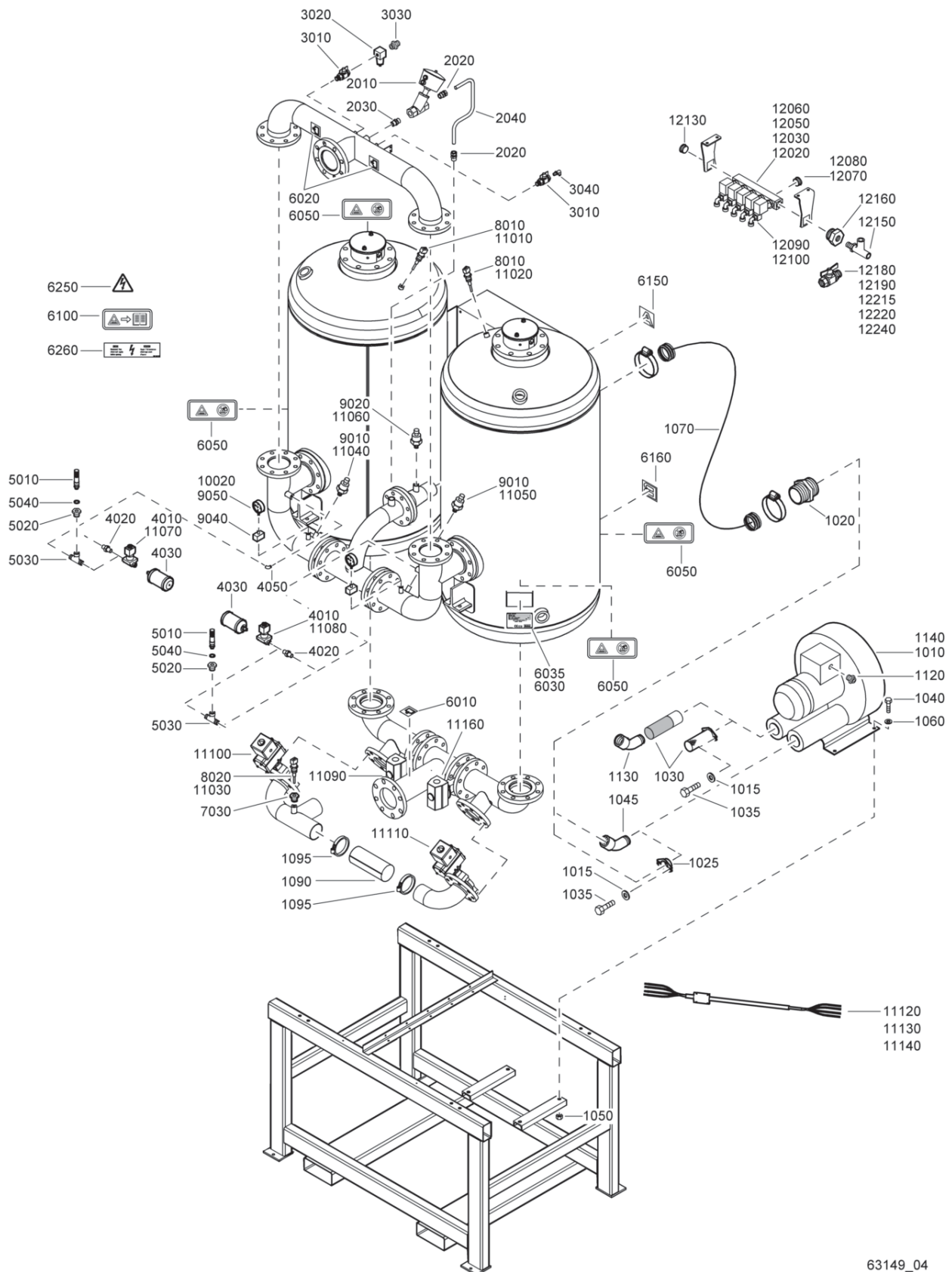
6



Specific parts

Ref.	Part number	Qty	Name	Remarks	Ref.	Part number	Qty	Name	Remarks
1010		1	Blower		1050		4	Lock nut	
	1089 9459 21		BD 260	230-400V/50Hz		0291 1128 20		BD 260	230V/50Hz
	1089 9459 21		BD 260	380-440V/60Hz				PDP-70	
	1089 9459 26		BD 260	500V/50Hz		0291 1128 23		Others	
	1089 9459 26		BD 260	575V/60Hz	1060		4	Washer	
	1089 9459 13		BD 260	690V/50Hz		0301 2344 00		BD 260	230V/50Hz
	1089 9459 22		BD 390	230-400V/50Hz				PDP-70	
	1089 9459 22		BD 390	380-440V/60Hz		0301 2358 00		Others	
	1089 9459 27		BD 390	500V/50Hz	1070		AR	Flexible hose	
	1089 9459 27		BD 390	575V/60Hz		1617 9500 00		BD 260	
	1089 9459 14		BD 390	690V/50Hz		1617 9501 00		BD 390	
	1089 9459 23		BD 520	230V/50Hz PDP-40		1617 9501 00		BD 520	
	1089 9459 35		BD 520	230V/50Hz PDP-70		1617 9502 00		BD 780	
	1089 9459 35		BD 520	380-440V/60Hz		1617 9503 00		BD 1050	
	1089 9459 35		BD 520	400V/50Hz	1090		1	Compensator hose	
	1089 9459 28		BD 520	500V/50Hz		1617 9352 01		BD 260	
	1089 9459 28		BD 520	575V/60Hz		1617 9352 01		BD 390	
	1089 9459 08		BD 520	690V/50Hz		1617 9352 02		BD 520	
	1089 9459 36		BD 780	380-440V/60Hz		1617 9352 02		BD 780	
	1089 9459 36		BD 780	400V/50Hz		1617 9352 03		BD 1050	
	1089 9459 29		BD 780	500V/50Hz	1095		2	Hose clamp	
	1089 9459 29		BD 780	575V/60Hz		0347 6132 15		BD 260	
	1089 9459 04		BD 780	690V/50Hz		0347 6132 15		BD 390	
	1089 9459 37		BD 1050	380-440V/60Hz		0347 6200 09		BD 520	
	1089 9459 37		BD 1050	400V/50Hz		0347 6200 09		BD 780	
	1089 9459 30		BD 1050	500V/50Hz		0347 6200 19		BD 1050	
	1089 9459 30		BD 1050	575V/60Hz PDP-40	1120		1	Reducer	
	1089 9459 30		BD 1050	575V/60Hz PDP-70		1079 9697 05		BD 260	
	1089 9459 05		BD 1050	690V/50Hz		1088 0250 45		Others	
1015		2	Washer		1130		1	Pipebend	
	0301 2335 00		BD 260			0562 0400 24		BD 780	
	0301 2335 00		BD 390		1140		1	Blower cable	
	0301 2335 00		BD 520			1617 9987 02		BD 1050	
1020		1	Nipple			1617 9987 01		Others	
	0603 4110 03		BD 780	690V/50Hz	2010		1	Angle seat valve	
	0603 4110 03		BD 1050			1617 9109 01		BD 260	
1025		1	Blower flange			1617 9109 01		BD 390	
	1089 9459 90		BD 260			1617 9109 02		BD 520	
	1089 9459 91		BD 390			1617 9109 02		BD 780	
	1089 9459 91		BD 520			1617 9109 02		BD 1050	
1030		1	Blower filter		2020		2	Straight pipe coupling	
	1617 9061 00		BD 260			0580 0525 06		BD 260	
	1617 9061 00		BD 390			0580 0525 06		BD 390	
	1617 9061 00		BD 520			0580 0014 59		BD 520	
	1617 9122 00		BD 780			0580 0014 59		BD 780	
	1617 9122 00		BD 1050			0580 0014 43		BD 1050	
1035		2	Bolt		2030		1	Nipple	
	0147 1323 03		BD 260			0560 4401 23		BD 260	
	0147 1323 03		BD 390			9740 2021 44		BD 390	
	0147 1323 03		BD 520			0603 4100 36		BD 520	
1040			Bolt			0603 4100 36		BD 780	
	0147 1402 03	2	BD 260	230V/50Hz PDP-40		0603 4100 36		BD 1050	
	0147 1364 03	2	BD 260	230V/50Hz PDP-70	2040		1	Pipe	
	0147 1402 03	2	BD 260	380-440-575V/60Hz		1617 9291 00		BD 260	
	0147 1402 03	2	BD 260	400-500-690V/50Hz		1617 9297 00		BD 390	
	0147 1402 03	4	BD 390			1617 9298 00		BD 520	
	0147 1960 69	4	BD 520			1617 9298 00		BD 780	
	0147 1960 69	4	BD 780			1617 9300 00		BD 1050	
	0147 1411 03	4	BD 1050	380-440V/60Hz	3010	0852 0010 45	2	Ball valve	
	0147 1411 03	4	BD 1050	400V/50Hz	3020	9093 0032 71	1	Mini filter	
	0147 1406 03	4	BD 1050	500-690V/50Hz	3030	9740 2021 22	1	Nipple	
	0147 1406 03	4	BD 1050	575V/60Hz PDP-40	3040	9090 1519 00	1	Coupling elbow	
	0147 1411 03	4	BD 1050	575V/60Hz PDP-70	4010	1089 0641 01	2	Exhaust valve	
1045		1	Elbow		4020	9740 2021 44	2	Nipple	
	0560 1311 03		BD 780		4030	1617 6173 00	2	Silencer	

6

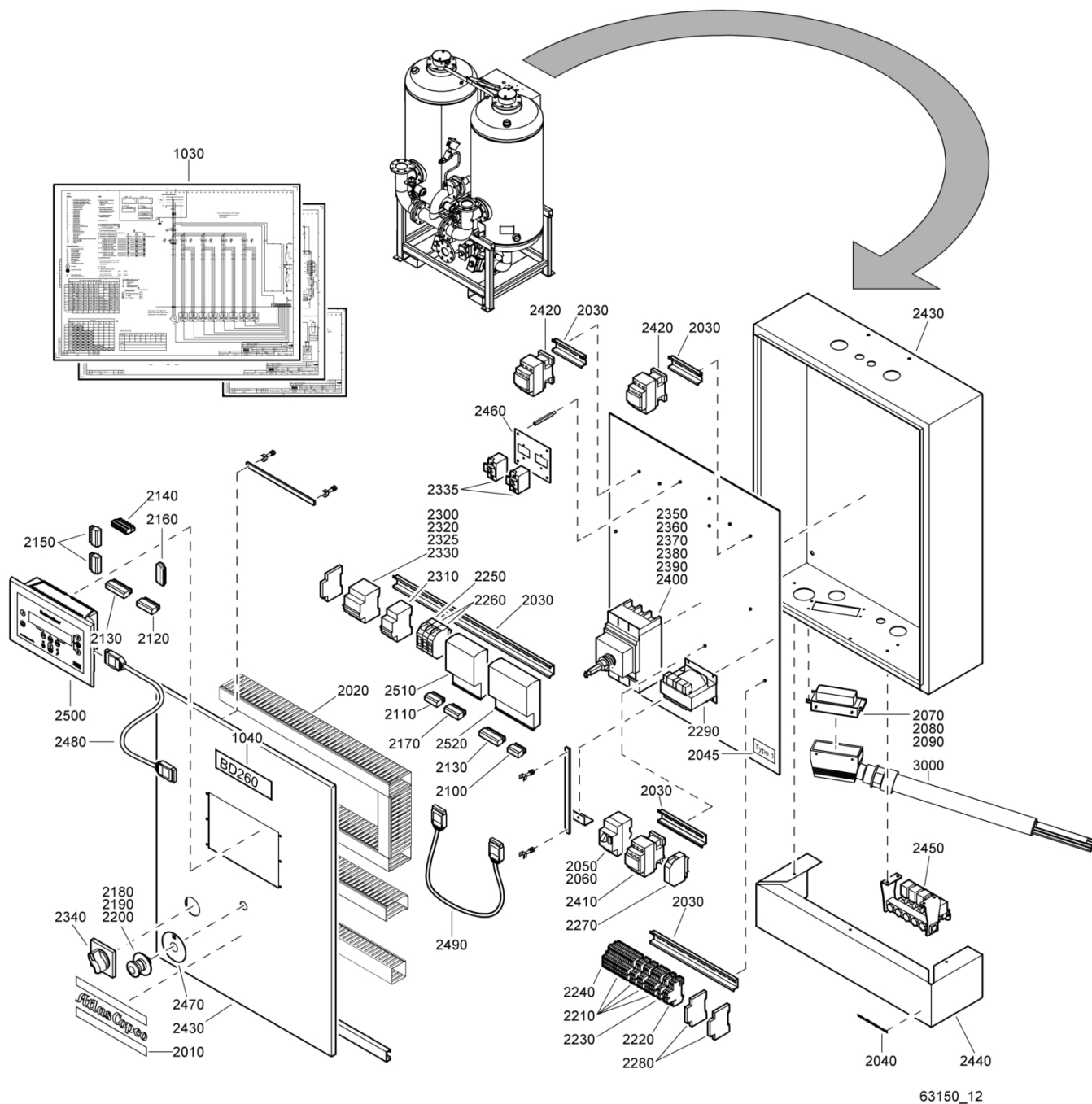


63149_04

Specific parts

Ref.	Part number	Qty	Name	Remarks
				12240 0196 1173 00 2 Set screw 0196 1169 00 BD 260 ASME Others
4050	0560 0200 23	2	Elbow BD 260 ASME	
5010	0830 1008 11	2	Safety valve ASME	1) See / Zie / Se / Siehe / Voir / Véase / Vedere / Se / Ver / Se / Katso
5020	0607 2900 08	2	Reducing socket ASME	Cubicle
5030	0560 4401 32	2	Tee ASME	
5040	0653 0529 00	2	Gasket ASME	
6010	1617 9588 00	1	Inlet label	
6020	1617 9587 00	2	Outlet label	
6030	1617 5664 00	1	Data plate	
6035	0129 3103 00	4	Blind rivet	
6050	1617 9292 00	4	Label	
6100	1617 9346 00	1	Warning label	
6150	1617 9485 01	1	Label	
6160	1617 9485 02	1	Label	
6250	1088 1001 02	1	Warning mark	
6260	1613 3431 00	1	Label	
7030	0605 8303 03	1	Bushing	
8010	1089 0574 49	2	Temperature sensor	
8020	1089 0574 46	1	Temperature sensor	
9010	1089 0575 65	2	Pressure transducer	
9020	1089 0492 31	1	Pressure transducer	
9040	9740 2028 22	2	Socket	
9050	0872 1000 37	2	Pressure gauge	
10020	0560 0200 61	2	Elbow BD 260	
	<< >>	1	Control cable 1)	
11010		• 1	Temp. sensor cable	
11020		• 1	Temp. sensor cable	
11030		• 1	Temp. sensor cable	
11040		• 1	Press. Transducer cable	
11050		• 1	Press. Transducer cable	
11060		• 1	Press. Transducer cable	
11070		• 1	Actuator cable	
11080		• 1	Actuator cable	
11090		• 1	Limit switch cable	
11100		• 1	Limit switch cable	
11110		• 1	Limit switch cable	
11120		• 1	Cable IF1	
11130		• 1	Cable IF2	
11140		• 1	Cable OF1	
11160		• 1	Limit switch cable	
12020	9090 1518 00	4	Coupling elbow	
12030	9090 1535 00	3	Coupling	
12050	0070 6002 04	AR	Plastic tube	
12060	1617 6085 00	2	Valve	
12070	0211 1964 61	2	Hex sock. screw	
12080	0803 5012 11	2	Silencer	
12090	0333 2212 00	2	Spring washer BD 260 ASME	
12100	0070 6002 37	AR	Plastic tube Except BD 260 ASME	
12130	0686 6130 00	3	Plug	
12150	9090 1536 00	1	Coupling	
12160	0605 8300 82	1	Bushing	
12180	0852 0010 45	1	Ball valve	
12190	9740 2021 22	1	Nipple	
12215	0653 1124 00	2	Flat gasket	
12220	0560 0200 61	2	Elbow BD 260 ASME	

7

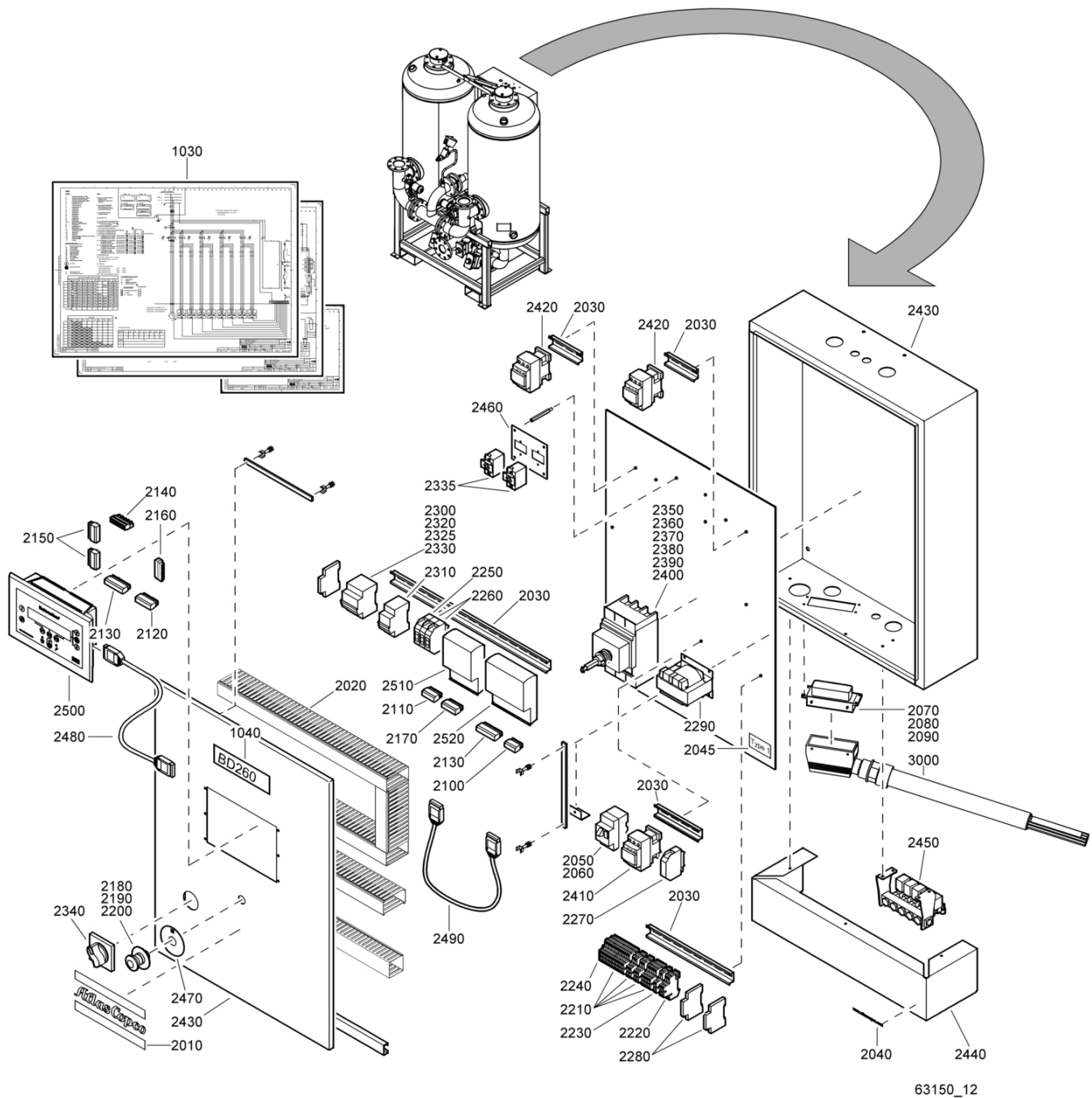


Cubicle - BD 260, BD 390

7

Ref.	Part number	Qty	Name	Remarks
1030	9827 1540 00	1	Service diagram	
1040		1	Label dryer type	
	1617 9062 01		BD260	
	1617 9062 02		BD390	
	1900 5000 04	1	Cubicle	
	1900 5000 05		BD 260 230V/50Hz PDP-40	
	1900 5000 02		BD 260 230V/50Hz PDP-70	
	1900 5000 02		BD 260 380V/60Hz PDP-40	
	1900 5000 02		BD 260 380V/60Hz PDP-70	
	1900 5000 01		BD 260 400V/50Hz PDP-40	
	1900 5000 03		BD 260 400V/50Hz PDP-70	
	1900 5000 33		BD 260 440-460V/60Hz PDP-40	
	1900 5000 33		BD 260 440-460V/60Hz PDP-70	
	1900 5000 08		BD 260 500V/50Hz PDP-40	
	1900 5000 08		BD 260 500V/50Hz PDP-70	
	1900 5000 34		BD 260 575V/60Hz PDP-40	
	1900 5000 34		BD 260 575V/60Hz PDP-70	
	1900 5000 06		BD 390 230V/50Hz PDP-40	
	1900 5000 07		BD 390 230V/50Hz PDP-70	
	1900 5000 04		BD 390 380V/60Hz PDP-40	
	1900 5000 04		BD 390 380V/60Hz PDP-70	
	1900 5000 02		BD 390 400V/50Hz PDP-40	
	1900 5000 02		BD 390 400V/50Hz PDP-70	
	1900 5000 35		BD 390 440-460V/60Hz PDP-40	
	1900 5000 35		BD 390 440-460V/60Hz PDP-70	
	1900 5000 09		BD 390 500V/50Hz PDP-40	
	1900 5000 09		BD 390 500V/50Hz PDP-70	
	1900 5000 36		BD 390 575V/60Hz PDP-40	
	1900 5000 36		BD 390 575V/60Hz PDP-70	
2010	0690 1125 00	• 1	Label	
2020	0991 8010 00	• 1	Raceway	
2030	0993 7106 00	• 1	DIN rail	
2040	1079 9921 00	• 1	Label	
2045		• 1	Label	
	1079 9911 01		CSA/UL	
2050		• 1	Circuit breaker	
	1081 0420 03		BD 260 230V/50Hz	
	1081 0420 03		BD 260 380V/60Hz	
	1081 0420 02		BD 260 400V/50Hz	
	1089 9416 68		BD 260 440-460V/60Hz	
	1081 0420 02		BD 260 500V/50Hz	
	1089 9416 67		BD 260 575V/60Hz	
	1081 0420 04		BD 390 230V/50Hz	
	1081 0420 03		BD 390 380V/60Hz	
	1081 0420 03		BD 390 400V/50Hz	
	1089 9416 69		BD 390 440-460V/60Hz	
	1081 0420 02		BD 390 500V/50Hz	
	1089 9416 68		BD 390 575V/60Hz	
2060		• 1	Aux. Contact block	
	1081 0420 33		IEC	
	1089 9416 45		CSA/UL	
2070	1088 0000 60	• 58	Aux. Contact block	
2080	1088 0000 70	• 1	Connector	
2090	1088 0000 71	• 1	Panel	
2100	1088 0031 07	• 1	Connector	
2110	1088 0031 08	• 1	Connector	
2120	1088 0031 10	• 1	Connector	
2130	1088 0031 12	• 2	Connector	
2140	1088 0031 13	• 1	Connector	
2150	1088 0031 29	• 2	Connector	
2160	1088 0031 30	• 2	Connector	
	2170		1088 0031 49	• 1 Connector
	2180		1089 0263 16	• 1 Contact block
	2190		1089 0263 43	• 1 Push button
	2200		1089 0263 44	• 1 Contact block
	2210		1089 0577 04	• 27 Terminal
	2220		1089 0577 07	• 4 Terminal
	2230		1089 0577 20	• 3 Terminal
	2240		1089 0577 21	• 1 End section
	2250		1089 9037 43	• 1 Fuse link
	2260		1089 9037 44	• 2 Fuse link
	2270		1089 9413 52	• 1 Contactor
	2280		1089 9413 53	• 2 Contactor
	2290			• 1 Transformer
			1089 9436 44	BD 260 230V/50Hz
			1089 9436 44	BD 260 380V/60Hz
			1089 9436 39	BD 260 400V/50Hz
			1089 9436 44	BD 260 440-460V/60Hz
			1089 9436 44	BD 260 500V/50Hz
			1089 9436 44	BD 260 575V/60Hz
			1089 9436 44	BD 390 230V/50Hz
			1089 9436 44	BD 390 380V/60Hz
			1089 9436 44	BD 390 400V/50Hz
			1089 9436 44	BD 390 440-460V/60Hz
			1089 9436 44	BD 390 500V/50Hz
			1089 9436 44	BD 390 575V/60Hz
	2300			• 1 Circuit breaker
			1089 9472 84	BD 260 230V/50Hz PDP-40
			1089 9472 85	BD 260 230V/50Hz PDP-70
			1089 9472 83	BD 260 380V/60Hz PDP-40
			1089 9472 83	BD 260 380V/60Hz PDP-70
			1089 9472 07	BD 260 400V/50Hz PDP-40
			1089 9472 83	BD 260 400V/50Hz PDP-70
			1089 9416 41	BD 260 440-460V/60Hz
				PDP-40
			1089 9416 41	BD 260 440-460V/60Hz
				PDP-70
			1089 9472 89	BD 260 500V/50Hz PDP-40
			1089 9472 89	BD 260 500V/50Hz PDP-70
			1089 9416 41	BD 260 575V/60Hz PDP-40
			1089 9416 41	BD 260 575V/60Hz PDP-70
			1089 9472 85	BD 390 230V/50Hz PDP-40
			1089 9472 86	BD 390 230V/50Hz PDP-70
			1089 9472 84	BD 390 380V/60Hz PDP-40
			1089 9472 84	BD 390 380V/60Hz PDP-70
			1089 9472 83	BD 390 400V/50Hz PDP-40
			1089 9472 83	BD 390 400V/50Hz PDP-70
			1089 9416 41	BD 390 440-460V/60Hz
				PDP-40
			1089 9416 41	BD 390 440-460V/60Hz
				PDP-70
			1089 9472 90	BD 390 500V/50Hz PDP-40
			1089 9472 90	BD 390 500V/50Hz PDP-70
			1089 9416 41	BD 390 575V/60Hz PDP-40
			1089 9416 41	BD 390 575V/60Hz PDP-70
	2310			• 1 Circuit breaker
			1089 9472 80	IEC
			1089 9416 57	CSA/UL 440-460V
			1089 9416 56	CSA/UL 575V
	2320			• 1 Aux. Contact block
			1089 9473 04	IEC 230V/50Hz
			1089 9473 04	IEC 380V/60Hz
			1089 9473 04	IEC 400V/50Hz
			1089 9473 05	IEC 500V/50Hz
	2325			• 1 Circuit breaker
			1089 9416 72	BD 260 440-460V/60Hz
			1089 9416 71	BD 260 575V/60Hz
			1089 9416 74	BD 390 440-460V/60Hz

7

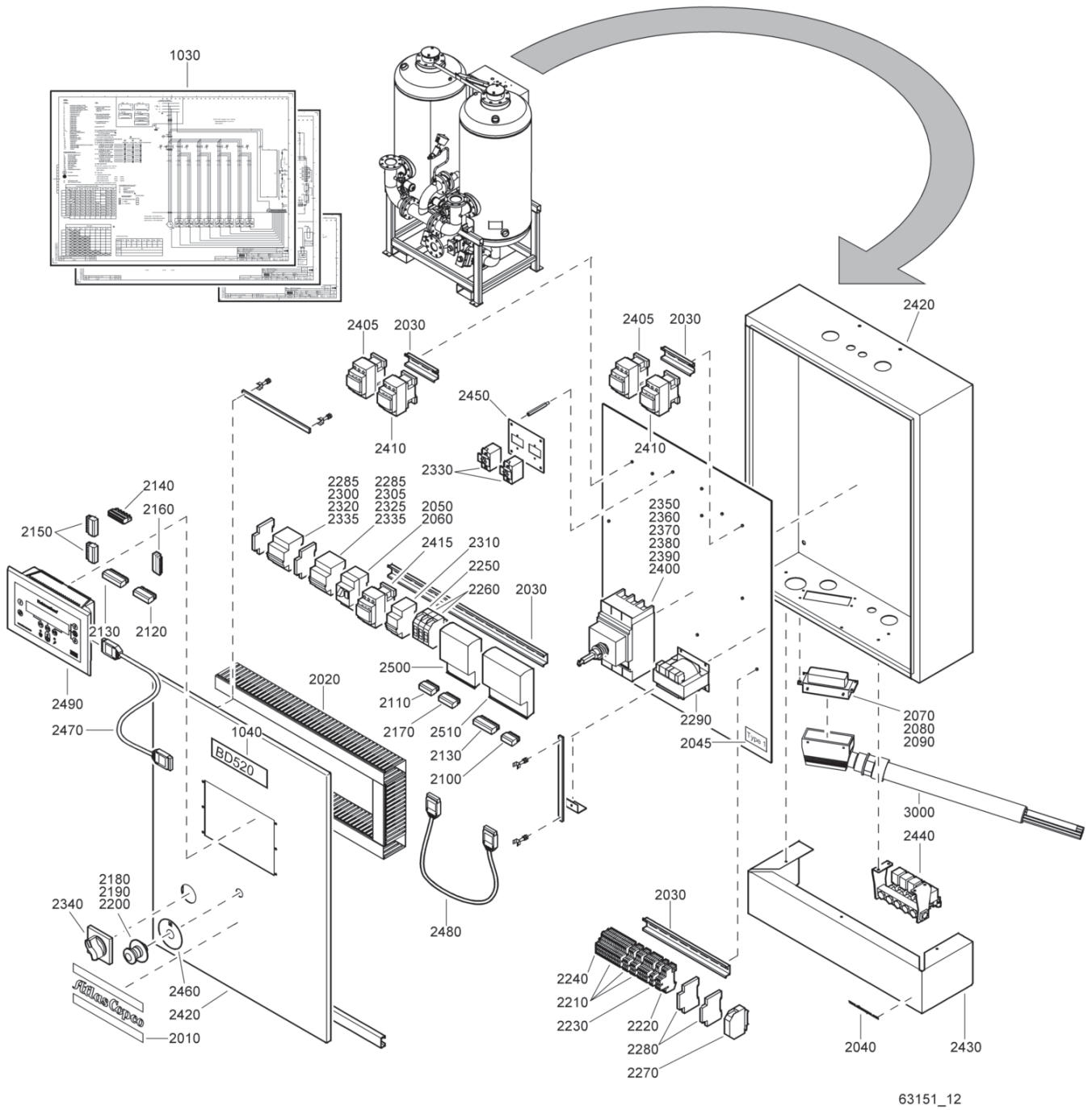


Cubicle - BD 260, BD 390

7

Ref.	Part number	Qty	Name	Remarks	Ref.	Part number	Qty	Name	Remarks
2330	1089 9416 82	• 1	BD 390 575V/60Hz Connection Block		2520	1900 0711 62	• 1	Regulator	
	1089 9416 75		BD 260 440-460V/60Hz		3000		1	Control cable	
	1089 9416 75		BD 260 575V/60Hz			1617 9950 80		BD 260	
	1089 9416 75		BD 390 440-460V/60Hz			1617 9951 80		BD 390	
2335	1089 9524 05	• 2	Switch						
2340	1089 9532 40	• 1	Main switch handle						
2350	1089 9532 41	• 1	Main switch disconnecter						
2360	1089 9532 44	• 1	Main switch housing						
2370	1089 9532 94	• 1	Main switch trip coil						
2380	1089 9532 97	• 1	Main switch shield						
2390	1089 9532 98	• 1	Main switch shield						
2400			Main switch terminal						
	1089 9532 99	• 2	BD 260 230V/50Hz						
	1089 9532 99	• 1	BD 260 380V/60Hz						
	1089 9532 99	• 1	BD 260 400V/50Hz PDP-40						
	1089 9532 99	• 2	BD 260 400V/50Hz PDP-70						
	1089 9532 99	• 1	BD 260 440-460V/60Hz						
	1089 9532 99	• 1	BD 260 500V/50Hz						
	1089 9532 99	• 1	BD 260 575V/60Hz						
	1089 9532 99	• 1	BD 390 230V/50Hz						
	1089 9532 99	• 2	BD 390 380V/60Hz						
	1089 9532 99	• 1	BD 390 400V/50Hz						
	1089 9532 99	• 1	BD 390 440-460V/60Hz						
	1089 9532 99	• 1	BD 390 500V/50Hz						
	1089 9532 99	• 1	BD 390 575V/60Hz						
2410		• 1	Contactor						
	1089 9578 24		BD 260 230V/50Hz						
	1089 9578 23		BD 260 380V/60Hz						
	1089 9578 23		BD 260 400V/50Hz						
	1089 9578 23		BD 260 440-460V/60Hz						
	1089 9578 23		BD 260 500V/50Hz						
	1089 9578 23		BD 260 575V/60Hz						
	1089 9578 25		BD 390 230V/50Hz						
	1089 9578 24		BD 390 380V/60Hz						
	1089 9578 23		BD 390 400V/50Hz						
	1089 9578 24		BD 390 440-460V/60Hz						
	1089 9578 23		BD 390 500V/50Hz						
	1089 9578 23		BD 390 575V/60Hz						
2420		• 2	Contactor						
	1089 9578 25		BD 260 230V/50Hz PDP-40						
	1089 9578 26		BD 260 230V/50Hz PDP-70						
	1089 9578 24		BD 260 380V/60Hz						
	1089 9578 24		BD 260 400V/50Hz						
	1089 9578 24		BD 260 440-460V/60Hz						
	1089 9578 24		BD 260 500V/50Hz						
	1089 9578 24		BD 260 575V/60Hz						
	1089 9578 26		BD 390 230V/50Hz PDP-40						
	1089 9578 27		BD 390 230V/50Hz PDP-70						
	1089 9578 25		BD 390 380V/60Hz						
	1089 9578 24		BD 390 400V/50Hz						
	1089 9578 25		BD 390 440-460V/60Hz						
	1089 9578 24		BD 390 500V/50Hz						
	1089 9578 24		BD 390 575V/60Hz						
2430	1617 6715 00	• 1	Cubicle						
2440	1617 9054 00	• 1	Cover						
2450	1617 9090 80	• 1	Solenoid valve assembly						
2460	1617 9941 00	• 1	Plate support						
2470	1621 0478 00	• 1	Label						
2480	1622 0661 01	• 1	Communication cable						
2490	1622 0661 02	• 1	Communication cable						
2500	1900 0710 31	• 1	Regulator Elektronikon						
2510	1900 0710 71	• 1	DIOE						

8



63151_12

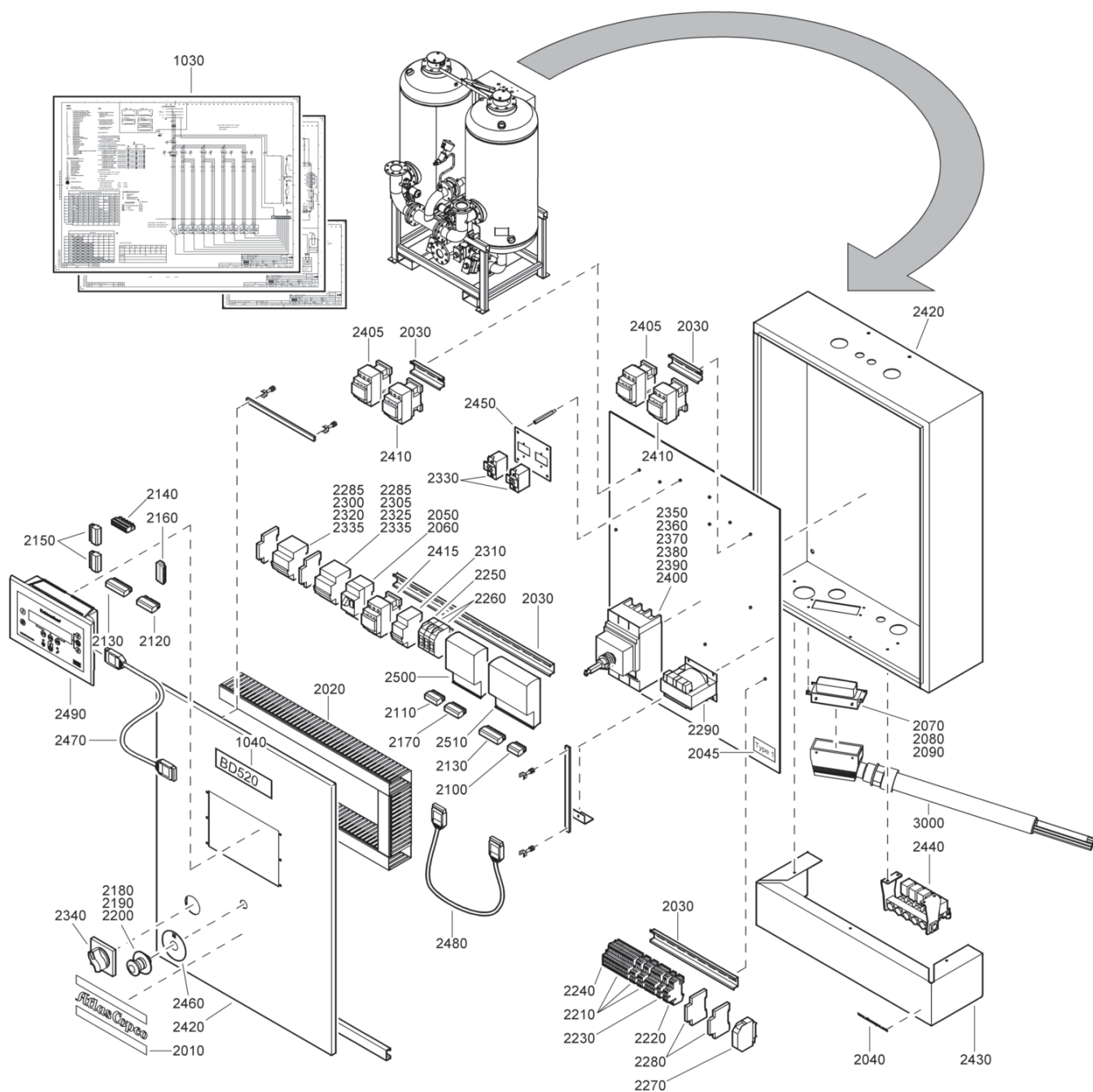
63151_12

Ref.	Part number	Qty	Name	Remarks	Ref.	Part number	Qty	Name	Remarks
1030	9827 1540 00	1	Service diagram		1900 5000 15	BD 520	230V/50Hz	PDP-70	
1040		1	Label dryer type		1900 5000 11	BD 520	380V/60Hz	PDP-40	
	1617 9062 03		BD520		1900 5000 11	BD 520	380V/60Hz	PDP-70	
	1617 9062 04		BD780		1900 5000 10	BD 520	400V/50Hz	PDP-40	
	1617 9116 01		BD1050		1900 5000 12	BD 520	400V/50Hz	PDP-70	
		1	Cubicle		1900 5000 37	BD 520	440-460V/60Hz	PDP-40	
	1900 5000 13		BD 520	230V/50Hz PDP-40	1900 5000 37	BD 520	440-460V/60Hz	PDP-70	

Cubicle - BD 520, BD 780, BD 1050

Ref.	Part number	Qty	Name	Remarks	Ref.	Part number	Qty	Name	Remarks
	1900 5000 19		BD 520	500V/50Hz PDP-40	2190	1089 0263 43	• 1	Push button	
	1900 5000 19		BD 520	500V/50Hz PDP-70	2200		•	Contact block	
	1900 5000 38		BD 520	575V/60Hz PDP-40		1089 0263 44	1	BD 520	230V/50Hz
	1900 5000 38		BD 520	575V/60Hz PDP-70		1089 0263 44	1	BD 520	380V/60Hz
	1900 5000 14		BD 780	380V/60Hz PDP-40		1089 0263 44	1	BD 520	400V/50Hz PDP-40
	1900 5000 14		BD 780	380V/60Hz PDP-70		1089 0263 44	2	BD 520	400V/50Hz PDP-70
	1900 5000 11		BD 780	400V/50Hz PDP-40		1089 0263 44	1	BD 520	440-460V/60Hz
	1900 5000 11		BD 780	400V/50Hz PDP-70		1089 0263 44	1	BD 520	500V/50Hz
	1900 5000 39		BD 780	440-460V/60Hz PDP-40		1089 0263 44	1	BD 520	575V/60Hz
						1089 0263 44	1	BD 780	380V/60Hz
	1900 5000 39		BD 780	440-460V/60Hz PDP-70		1089 0263 44	1	BD 780	400V/50Hz
						1089 0263 44	1	BD 780	440-460V/60Hz
	1900 5000 20		BD 780	500V/50Hz PDP-40		1089 0263 44	1	BD 780	500V/50Hz
	1900 5000 20		BD 780	500V/50Hz PDP-70		1089 0263 44	1	BD 780	575V/60Hz
	1900 5000 40		BD 780	575V/60Hz PDP-40		1089 0263 44	1	BD 1050	380V/60Hz
	1900 5000 40		BD 780	575V/60Hz PDP-70		1089 0263 44	1	BD 1050	400V/50Hz
	1900 5000 18		BD 1050	380V/60Hz PDP-40		1089 0263 44	1	BD 1050	440-460V/60Hz
	1900 5000 18		BD 1050	380V/60Hz PDP-70		1089 0263 44	1	BD 1050	500V/50Hz
	1900 5000 16		BD 1050	400V/50Hz PDP-40		1089 0263 44	1	BD 1050	575V/60Hz
	1900 5000 17		BD 1050	400V/50Hz PDP-70	2210	1089 0577 04	• 27	Terminal	
	1900 5000 41		BD 1050	440-460V/60Hz PDP-40	2220	1089 0577 07	• 4	Terminal	
					2230	1089 0577 20	• 3	Terminal	
	1900 5000 41		BD 1050	440-460V/60Hz PDP-70	2240	1089 0577 21	• 1	End section	
					2250	1089 9037 43	• 1	Fuse link	
	1900 5000 21		BD 1050	500V/50Hz PDP-40	2260	1089 9037 44	• 2	Fuse link	
	1900 5000 22		BD 1050	500V/50Hz PDP-70	2270	1089 9413 52	• 1	Contact	
	1900 5000 42		BD 1050	575V/60Hz PDP-40	2280	1089 9413 53	• 2	Contact	
	1900 5000 42		BD 1050	575V/60Hz PDP-70	2285		• 2	Circuit breaker	
2010	0690 1125 00	• 1	Label			1089 9416 41		CSA/UL	
2020	0991 8010 00	• 1	Raceway		2290		• 1	Transformer	
2030	0993 7106 00	• 1	DIN rail			1089 9436 44		BD 520	230V/50Hz
2040	1079 9921 00	• 1	Label			1089 9436 44		BD 520	380V/60Hz
2045	1079 9911 01	• 1	Label			1089 9436 39		BD 520	400V/50Hz
			CSA/UL			1089 9436 44		BD 520	440-460V/60Hz
2050		• 1	Circuit breaker			1089 9436 44		BD 520	500V/50Hz
	1081 0420 05		BD 520	230V/50Hz		1089 9436 44		BD 520	575V/60Hz
	1081 0420 04		BD 520	380V/60Hz		1089 9436 44		BD 780	380V/60Hz
	1081 0420 03		BD 520	400V/50Hz		1089 9436 44		BD 780	400V/50Hz
	1089 9416 70		BD 520	440-460V/60Hz		1089 9436 44		BD 780	440-460V/60Hz
	1081 0420 05		BD 520	500V/50Hz		1089 9436 44		BD 780	500V/50Hz
	1089 9416 69		BD 520	575V/60Hz		1089 9436 44		BD 780	575V/60Hz
	1081 0420 05		BD 780	380V/60Hz		1089 9436 44		BD 1050	380V/60Hz
	1081 0420 04		BD 780	400V/50Hz		1089 9436 39		BD 1050	400V/50Hz
	1089 9416 71		BD 780	440-460V/60Hz		1089 9436 44		BD 1050	440-460V/60Hz
	1081 0420 05		BD 780	500V/50Hz		1089 9436 44		BD 1050	500V/50Hz
	1089 9416 70		BD 780	575V/60Hz		1089 9436 44		BD 1050	575V/60Hz
	1081 0420 05		BD 1050	380V/60Hz	2300		• 1	Circuit breaker	
	1081 0420 06		BD 1050	400V/50Hz		1089 9472 84		BD 520	230V/50Hz PDP-40
	1089 9416 72		BD 1050	440-460V/60Hz		1089 9472 85		BD 520	230V/50Hz PDP-70
	1081 0420 05		BD 1050	500V/50Hz		1089 9472 83		BD 520	380V/60Hz
	1089 9416 82		BD 1050	575V/60Hz		1089 9472 07		BD 520	400V/50Hz PDP-40
2060		• 1	Aux. Contact block			1089 9472 83		BD 520	400V/50Hz PDP-70
	1081 0420 33		IEC			1089 9416 72		BD 520	440-460V/60Hz
	1089 9416 45		CSA/UL			1089 9472 89		BD 520	500V/50Hz
2070	1088 0000 60	• 58	Aux. Contact block			1089 9416 71		BD 520	575V/60Hz
2080	1088 0000 70	• 1	Connector			1089 9472 84		BD 780	380V/60Hz
2090	1088 0000 71	• 1	Panel			1089 9472 83		BD 780	400V/50Hz
2100	1088 0031 07	• 1	Connector			1089 9416 83		BD 780	440-460V/60Hz
2110	1088 0031 08	• 1	Connector			1089 9472 90		BD 780	500V/50Hz
2120	1088 0031 10	• 1	Connector			1089 9416 82		BD 780	575V/60Hz
2130	1088 0031 12	• 2	Connector			1089 9472 86		BD 1050	380V/60Hz
2140	1088 0031 13	• 1	Connector			1089 9472 84		BD 1050	400V/50Hz PDP-40
2150	1088 0031 29	• 2	Connector			1089 9472 86		BD 1050	400V/50Hz PDP-70
2160	1088 0031 30	• 2	Connector			1089 9416 85		BD 1050	440-460V/60Hz
2170	1088 0031 49	• 1	Connector			1089 9472 92		BD 1050	500V/50Hz
2180	1089 0263 16	• 1	Contact block			1089 9416 84		BD 1050	575V/60Hz

8



63151_12

63151 12

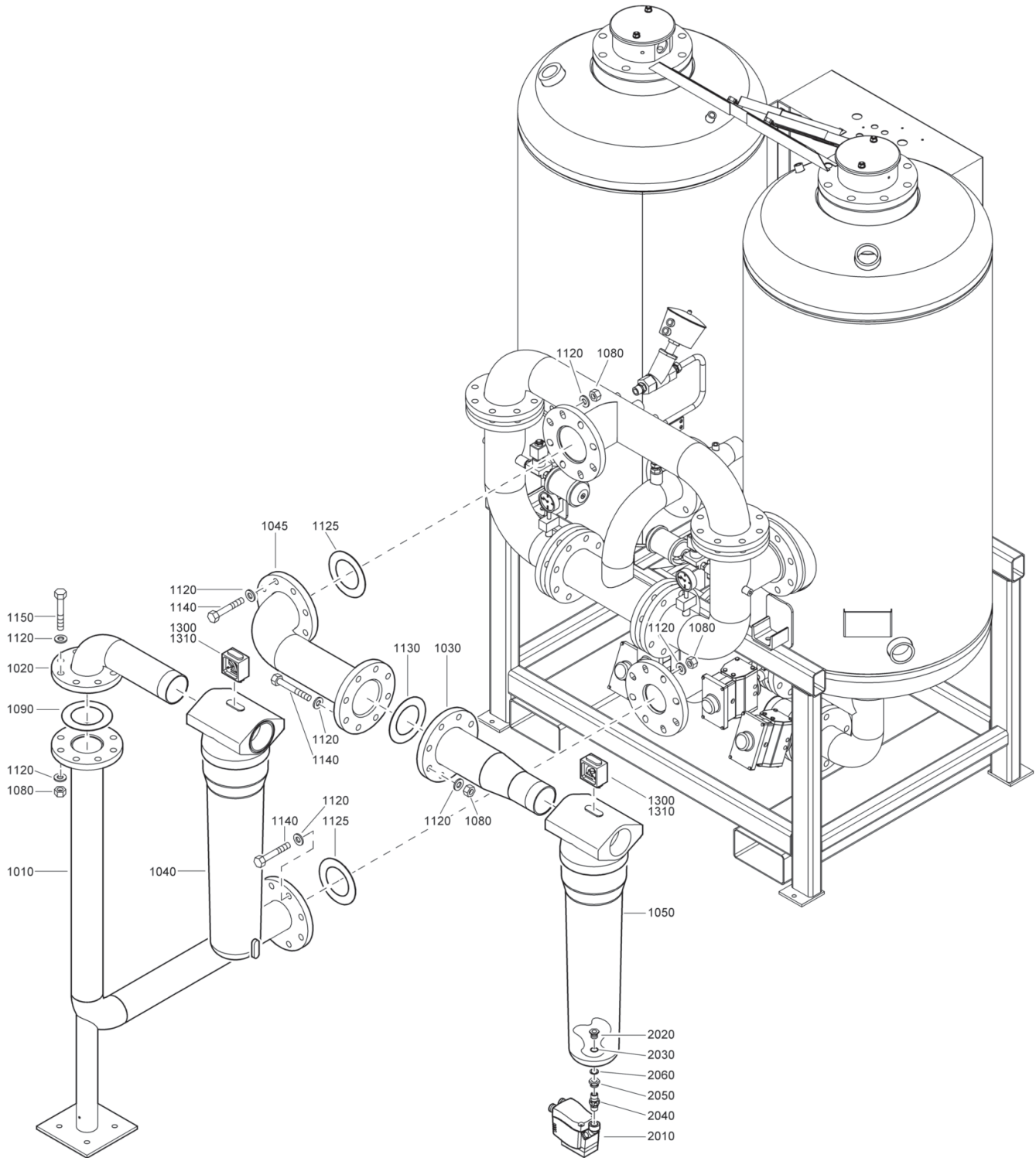
Ref.	Part number	Qty	Name	Remarks
2305		1	Circuit breaker	
	1089 9472 84		BD 520 230V/50Hz	PDP-40
	1089 9472 85		BD 520 230V/50Hz	PDP-70
	1089 9472 83		BD 520 380V/60Hz	
	1089 9472 07		BD 520 400V/50Hz	PDP-40
	1089 9472 83		BD 520 400V/50Hz	PDP-70
	1089 9416 72		BD 520 440-460V/60Hz	

Ref.	Part number	Qty	Name	Remarks
	1089 9472 89		BD 520	500V/50Hz
	1089 9416 71		BD 520	575V/60Hz
	1089 9472 84		BD 780	380V/60Hz
	1089 9472 83		BD 780	400V/50Hz
	1089 9416 83		BD 780	440-460V/60Hz
	1089 9472 90		BD 780	500V/50Hz
	1089 9416 82		BD 780	575V/60Hz

Cubicle - BD 520, BD 780, BD 1050

Ref.	Part number	Qty	Name	Remarks	Ref.	Part number	Qty	Name	Remarks
	1089 9472 85		BD 1050	380V/60Hz		1089 9578 24		BD 520	500V/50Hz
	1089 9472 84		BD 1050	400V/50Hz PDP-40		1089 9578 24		BD 520	575V/60Hz
	1089 9472 85		BD 1050	400V/50Hz PDP-70		1089 9578 25		BD 780	380V/60Hz
	1089 9416 85		BD 1050	440-460V/60Hz		1089 9578 25		BD 780	400V/50Hz
	1089 9472 92		BD 1050	500V/50Hz		1089 9578 25		BD 780	440-460V/60Hz
	1089 9416 84		BD 1050	575V/60Hz		1089 9578 24		BD 780	500V/50Hz
2310		• 1	Circuit breaker			1089 9578 24		BD 780	575V/60Hz
	1089 9472 80		IEC			1089 9578 27		BD 1050	380V/60Hz
	1089 9416 57		CSA/UL 440-460V			1089 9578 27		BD 1050	400V/50Hz
	1089 9416 56		CSA/UL 575V			1089 9578 27		BD 1050	440-460V/60Hz
2320		• 1	Aux. Contact block			1089 9578 26		BD 1050	500V/50Hz
	1089 9473 04		BD 520	230V/50Hz		1089 9578 26		BD 1050	575V/60Hz
	1089 9473 04		BD 520	380V/60Hz	2410		• 2	Contactor	
	1089 9473 04		BD 520	400V/50Hz		1089 9578 25		BD 520	230V/50Hz PDP-40
	1089 9473 05		BD 520	500V/50Hz		1089 9578 26		BD 520	230V/50Hz PDP-70
	1089 9473 04		BD 780	380V/60Hz		1089 9578 25		BD 520	380V/60Hz
	1089 9473 04		BD 780	400V/50Hz		1089 9578 24		BD 520	400V/50Hz PDP-40
	1089 9473 05		BD 780	500V/50Hz		1089 9578 25		BD 520	400V/50Hz PDP-70
	1089 9473 04		BD 1050	400V/50Hz		1089 9578 25		BD 520	440-460V/60Hz
	1089 9473 05		BD 1050	500V/50Hz		1089 9578 24		BD 520	500V/50Hz
2325		• 1	Aux. Contact block			1089 9578 24		BD 520	575V/60Hz
	1089 9473 04		BD 520	230V/50Hz		1089 9578 25		BD 780	380V/60Hz
	1089 9473 04		BD 520	380V/60Hz		1089 9578 25		BD 780	400V/50Hz
	1089 9473 04		BD 520	400V/50Hz		1089 9578 25		BD 780	440-460V/60Hz
	1089 9473 05		BD 520	500V/50Hz		1089 9578 24		BD 780	500V/50Hz
	1089 9473 04		BD 780	380V/60Hz		1089 9578 24		BD 780	575V/60Hz
	1089 9473 04		BD 780	400V/50Hz		1089 9578 26		BD 1050	380V/60Hz
	1089 9473 05		BD 780	500V/50Hz		1089 9578 27		BD 1050	400V/50Hz PDP-40
	1089 9473 04		BD 1050	380V/60Hz				BD 1050	400V/50Hz PDP-70
	1089 9473 04		BD 1050	400V/50Hz		1089 9578 26		BD 1050	400V/50Hz PDP-70
	1089 9473 05		BD 1050	500V/50Hz				BD 1050	440-460V/60Hz
2330	1089 9524 05	• 2	Switch			1089 9578 27		BD 1050	440-460V/60Hz
2335		• 2	Connection Block			1089 9578 26		BD 1050	500V/50Hz
	1089 9416 75		BD 520	440-460V/60Hz		1089 9578 26		BD 1050	575V/60Hz
	1089 9416 75		BD 520	575V/60Hz	2415		• 1	Contactor	
	1089 9416 75		BD 780	440-460V/60Hz		1089 9578 25		BD 520	230V/50Hz
2340	1089 9532 40	• 1	Main switch handle			1089 9578 25		BD 520	380V/60Hz
2350	1089 9532 41	• 1	Main switch disconnect			1089 9578 24		BD 520	400V/50Hz
2360	1089 9532 44	• 1	Main switch housing			1089 9578 24		BD 520	440-460V/60Hz
2370	1089 9532 94	• 1	Main switch trip coil			1089 9578 25		BD 520	500V/50Hz
2380	1089 9532 97	• 1	Main switch shield			1089 9578 24		BD 520	575V/60Hz
2390	1089 9532 98	• 1	Main switch shield			1089 9578 25		BD 780	380V/60Hz
2400			Main switch terminal			1089 9578 25		BD 780	400V/50Hz
	1089 9532 99	• 1	BD 520	230V/50Hz		1089 9578 25		BD 780	440-460V/60Hz
	1089 9532 99	• 1	BD 520	380V/60Hz		1089 9578 25		BD 780	500V/50Hz
	1089 9532 99	• 1	BD 520	400V/50Hz		1089 9578 24		BD 780	575V/60Hz
	1089 9532 99	• 1	BD 520	440-460V/60Hz		1089 9578 26		BD 1050	380V/60Hz
	1089 9532 99	• 1	BD 520	500V/50Hz		1089 9578 25		BD 1050	400V/50Hz
	1089 9532 99	• 1	BD 520	575V/60Hz		1089 9578 26		BD 1050	440-460V/60Hz
	1089 9532 99	• 1	BD 780	380V/60Hz		1089 9578 25		BD 1050	500V/50Hz
	1089 9532 99	• 1	BD 780	400V/50Hz		1089 9578 25		BD 1050	575V/60Hz
	1089 9532 99	• 1	BD 780	440-460V/60Hz	2420	1617 6715 00	• 1	Cubicle	
	1089 9532 99	• 1	BD 780	500V/50Hz	2430	1617 9054 00	• 1	Cover	
	1089 9532 99	• 1	BD 780	575V/60Hz	2440	1617 9090 80	• 1	Solenoid valve assembly	
	1089 9532 99	• 2	BD 1050	380V/60Hz	2450	1617 9941 00	• 1	Plate support	
	1089 9532 99	• 1	BD 1050	400V/50Hz	2460	1621 0478 00	• 1	Label	
	1089 9532 99	• 1	BD 1050	440-460V/60Hz	2470	1622 0661 01	• 1	Communication cable	
	1089 9532 99	• 1	BD 1050	500V/50Hz	2480	1622 0661 02	• 1	Communication cable	
	1089 9532 99	• 1	BD 1050	500V/50Hz	2490	1900 0710 31	• 1	Regulator	
	1089 9532 99	• 1	BD 1050	575V/60Hz	2500	1900 0710 71	• 1	DIOE	
2405		• 2	Contactor		2510	1900 0711 62	• 1	Regulator	
	1089 9578 25		BD 520	230V/50Hz PDP-40	3000		1	Control cable	
	1089 9578 25		BD 520	380V/60Hz		1617 9952 80		BD 520	
	1089 9578 24		BD 520	400V/50Hz PDP-40		1617 9943 80		BD 780	
	1089 9578 25		BD 520	400V/50Hz PDP-70		1617 9953 80		BD 1050	
	1089 9578 25		BD 520	440-460V/60Hz					

9

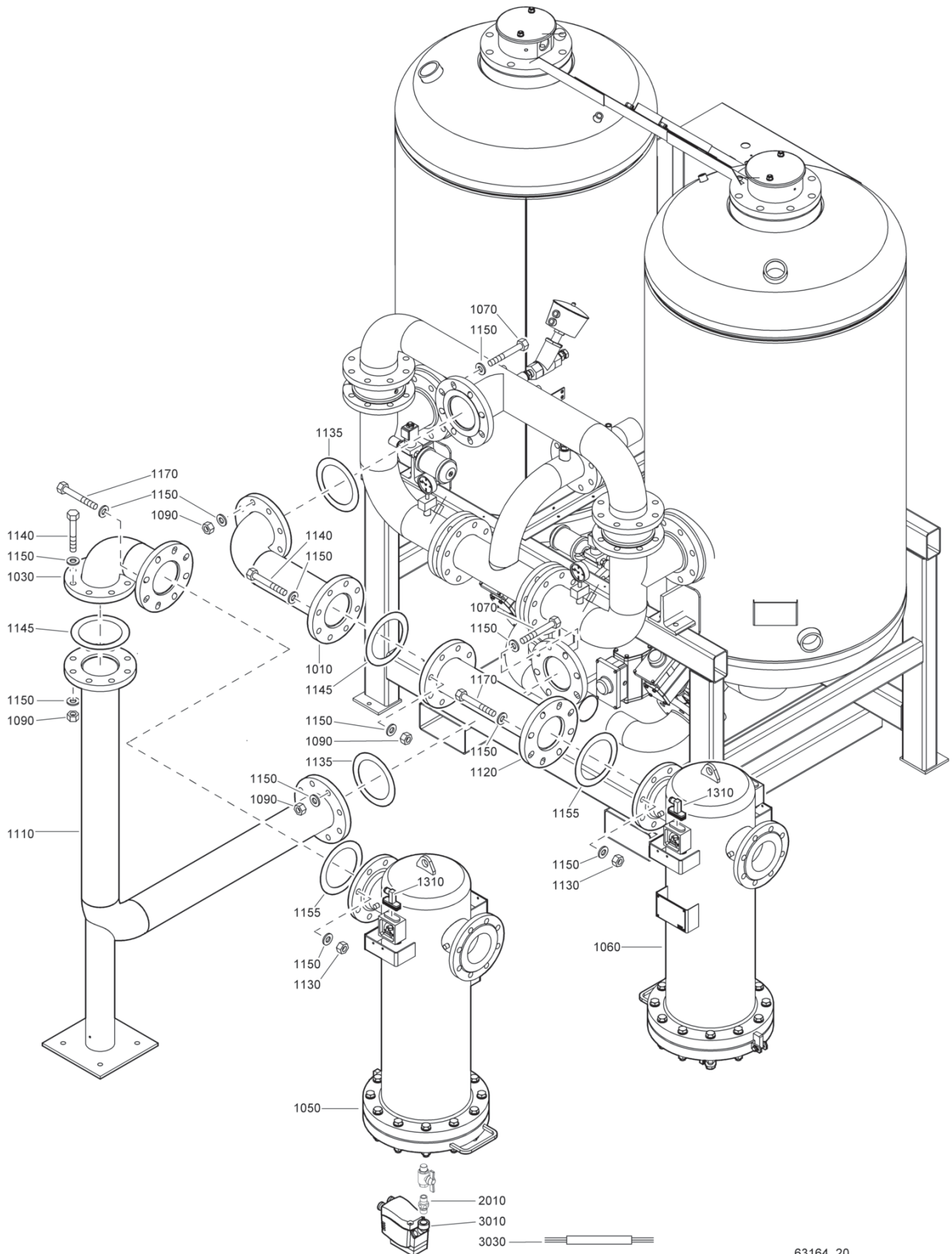


63157_20

Option - Filters BD 260, BD 390, BD 520

Ref.	Part number	Qty	Name	Remarks	Ref.	Part number	Qty	Name	Remarks
1010	1617 9632 00	1	Pipe		1090	0650 0101 36	1	Gasket	
	1617 9633 00		BD 260			0650 0100 20		BD 260	
	1617 9664 00		BD 390			0650 0100 20		BD 390	
			BD 520			0650 0100 20		BD 520	
1020	1617 9650 00	1	Pipe		1120	0301 2378 00	56	Washer	
	1617 9647 00		BD 260 CE			0301 2378 00	64	BD 260	
	1617 9644 00		BD 260 ASME			0301 2378 00	64	BD 390	
	1617 9641 00		BD 390 CE			0301 2378 00	64	BD 520	
	1617 9635 00		BD 390 ASME		1125	0650 0100 20	2	Gasket	
	1617 9638 00		BD 520 CE			0650 0100 20		BD 260	
			BD 520 ASME			0650 0100 20		BD 390	
1030	1617 9866 00	1	Pipe			0650 0100 26		BD 520	
	1617 9867 00		BD 260 CE		1130	0650 0100 20	1	Gasket	
	1617 9868 00		BD 260 ASME		1140		24	Bolt	
	1617 9869 00		BD 390 CE			0147 1482 03		BD 260	
	1617 9870 00		BD 390 ASME			0147 1482 03		BD 390	
	1617 9871 00		BD 520 CE			0147 1482 03		BD 520	
			BD 520 ASME		1150			Bolt	
1040	8102 2603 31	1	PD filter			0147 1481 03	4	BD 260	
	8102 2607 78		BD 260 CE			0147 1482 03	8	BD 390	
	8102 2603 72		BD 260 ASME			0147 1482 03	8	BD 520	
	8102 2608 36		BD 390 CE		1300	0017 2317 24	6	Cable	
	8102 2604 14		BD 390 ASME		1310			Potential free contact	
	8102 2608 51		BD 520 CE			1617 7250 00	2	BD 260	
			BD 520 ASME			1617 7250 00	3	BD 390	
1045	1617 9863 00	1	Pipe			1617 7250 00	2	BD 520	
	1617 9863 00		BD 260		2010		1	EWD	
	1617 9864 00		BD 390			1613 8913 14		ASME	
			BD 520			1613 8913 13		CE	
1050	8102 2603 49	1	DDp filter		2020	1617 7115 00	1	Connection piece	
	8102 2607 86		BD 260 CE		2030	0663 9244 00	1	O-ring	
	8102 2603 80		BD 260 ASME		2040	1617 7123 00	1	Coupling	
	8102 2608 10		BD 390 CE		2050	0605 8700 85	1	Bushing	
	8102 2604 22		BD 390 ASME		2060	0661 1026 00	1	Sealing washer	
	8102 2608 69		BD 520 CE						
			BD 520 ASME						
1080	0266 2114 00		Nut						
	0266 2114 00	28	BD 260 CE						
	0266 2114 00	32	BD 390 CE						
	0266 2114 00	32	BD 520 CE						

10

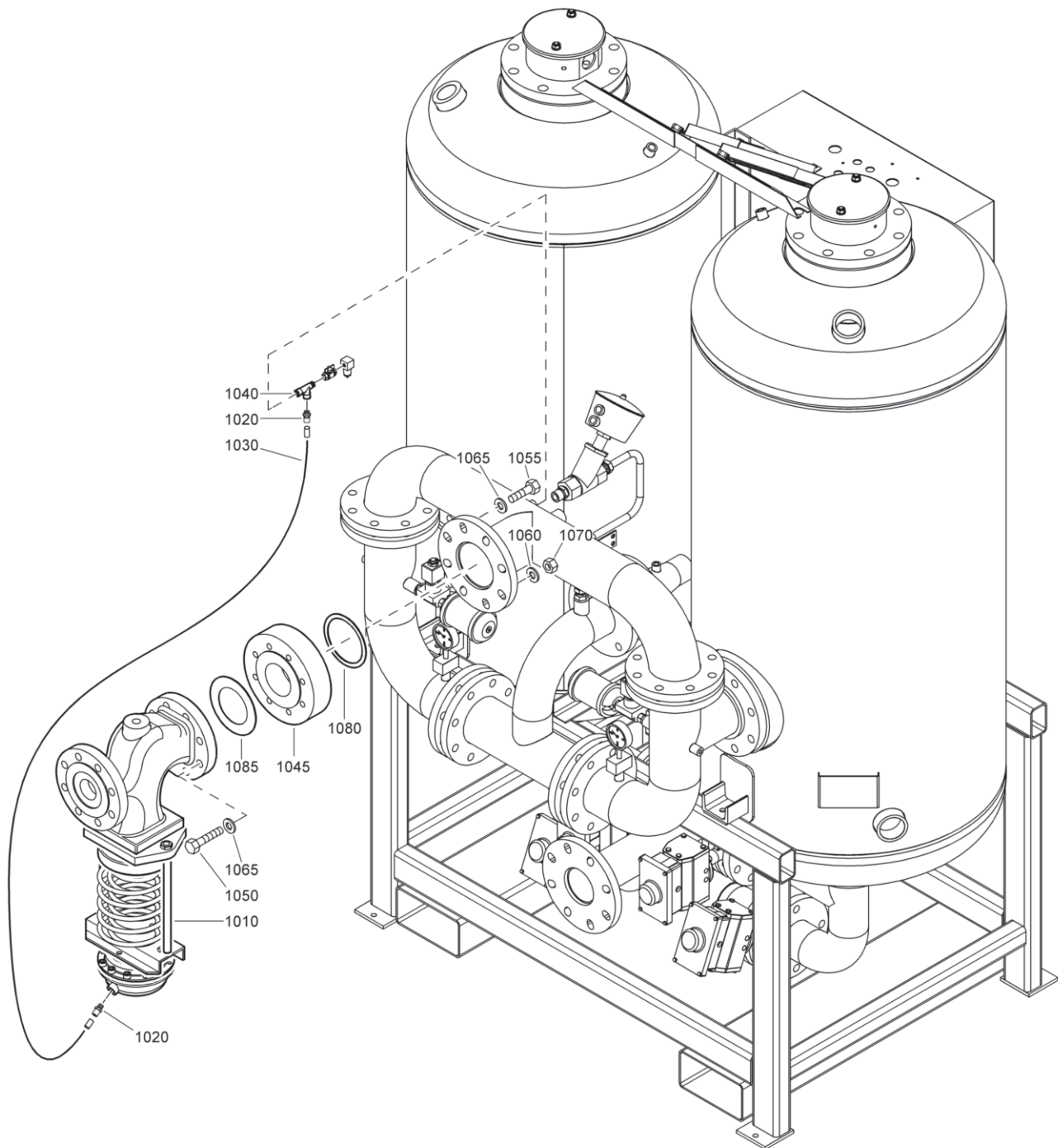


63164_20

Option - Filters BD 780, BD 1050

Ref.	Part number	Qty	Name	Remarks	Ref.	Part number	Qty	Name	Remarks
1010	1617 9872 00	1	Pipe		1130	0268 3210 00	16	Nut	
	1617 9874 00		BD 780			0266 2114 00		BD 780 ASME	
1030		1	Pipe			0266 2114 00		BD 780 CE	
	1617 9630 00	1	BD 780			0266 2114 00		BD 1050 CE	
	1617 9876 00	1	BD 1050			0266 2114 00		BD 1050 ASME	
1050		1	PD Filter		1135	0650 0100 26	2	Gasket	
	8102 2610 08		BD 780 CE		1140	0147 1482 03	16	Bolt	
	8102 2620 14		BD 780 ASME		1145		2	Gasket	
	8102 2610 40		BD 1050 CE			0650 0100 26		BD 780 CE	
	8102 2620 55		BD 1050 ASME			0650 0100 26		BD 780 ASME	
1060		1	DDp Filter			0650 0101 43		BD 1050 CE	
	8102 2609 92		BD 780 CE			0650 0101 43		BD 1050 ASME	
	8102 2620 06		BD 780 ASME		1150	0301 2378 00	96	Washer	
	8102 2610 32		BD 1050 CE		1155		2	Gasket	
	8102 2620 48		BD 1050 ASME			0650 0100 26		BD 780 CE	
1070		16	Bolt			0650 0101 41		BD 780 ASME	
	0147 1482 03		BD 780			0650 0101 43		BD 1050 CE	
	0147 1484 03		BD 1050			0650 0101 43		BD 1050 ASME	
1090		32	Nut		1170		16	Bolt	
	0266 2114 00		BD 780 CE			0147 1482 03		BD 780 CE	
	0266 2114 00		BD 780 ASME			0144 3453 03		BD 780 ASME	
	0266 2114 00		BD 1050 CE			0147 1484 03		BD 1050 CE	
	0266 2114 00		BD 1050 ASME			0147 1484 03		BD 1050 ASME	
1110		1	Pipe		1310	1617 7250 00	2	Pot. free contact	
	1617 9665 00		BD 780		2010	1617 7116 00	1	Coupling	
	1617 9691 00		BD 1050 CE		3010		1	EWD	
1120		1	Pipe			1613 8913 14		ASME	
	1617 9873 00		BD 780			1613 8913 13		CE	
	1617 9875 00		BD 1050 CE		3030	1624 1028 00	1	Cable for EWD	

11

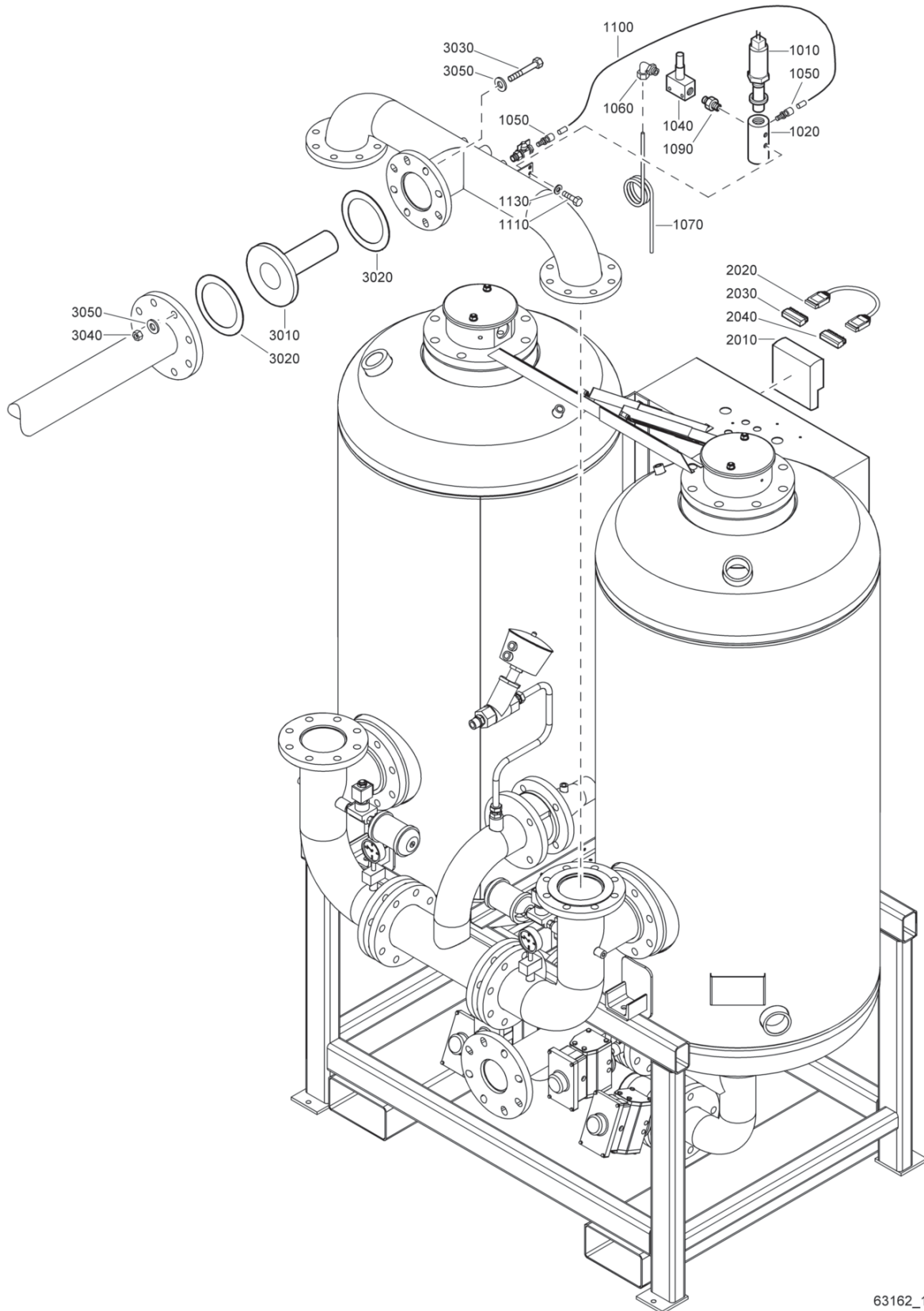


63165_20

Option - Minimum pressure valve without filters

Ref.	Part number	Qty	Name	Remarks	Ref.	Part number	Qty	Name	Remarks
		1	Option Minimum Pressure Valve		1060		•	Washer	
1010	• 1617 9834 01	1	Minimum pressure valve			0301 2378 00	4	BD 260	
	1617 9834 02		BD 260			0301 2378 00	8	BD 390	
	1617 9834 02		BD 390			0301 2378 00	8	BD 780	
	1617 9834 04		BD 520			0301 2378 00	8	BD 1050	
	1617 9834 05		BD 780		1065	•	16	Washer	
1020	9740 2001 32	• 2	Coupling			0301 2378 00		BD 520	
1030	0070 6002 38	• 1	Tube		1070	•		Nut	
1040	9740 2028 22	• 1	Socket			0266 2114 00	4	BD 260	
1045	1617 9687 00	• 1	Adaptor			0266 2114 00	8	BD 390	
1050	•		Bolt			0266 2114 00	8	BD 520	
	0147 1961 80	4	BD 260			0266 2114 00	8	BD 780	
	0147 1961 80	8	BD 390			0266 2114 00	8	BD 1050	
	0147 1478 03	8	BD 520		1080	•	1	Gasket	
	0147 1483 03	8	BD 780			0650 0100 63		BD 260	
	0147 1483 03	8	BD 1050			0650 0101 09		BD 390	
1055	•		Bolt			0650 0101 09		BD 520	
	0147 1478 03	8	BD 520			0650 0100 52		BD 780	
						0650 0100 26		BD 1050	
					1085	•	1	Gasket	
						0650 0101 09		BD 520	

12



63162_10

Option - PDP control and nozzle

Ref.	Part number	Qty	Name	Remarks	Ref.	Part number	Qty	Name	Remarks
	1603 4700 37	1	Option PDP-control			1617 9049 04		BD 780	
1010	1089 9481 51	• 1	Dewpoint sensor			1617 9049 05		BD 1050	
1020	1617 9655 80	• 1	Sensor housing		3020	• 2	Gasket		
1040	8204 0941 09	• 1	Needle valve			0650 0100 20		BD 260	
1050	9740 2001 32	• 2	Coupling			0650 0100 20		BD 390	
1060	0582 2000 22	• 1	Biconical fitting			0650 0100 26		BD 520	
1070	1617 9471 00	• 1	Pipe			0650 0100 26		BD 780	
1090	0603 4300 07	• 1	Hexagon nipple			0650 0101 45		BD 1050	
1100	0070 6002 38	• AR	Tube		3030	•	Bolt		
1110	0147 1242 03	• 2	Hex. head screw			0147 1487 03	4	BD 260	
1130	0301 2321 00	• 2	Washer			0147 1487 03	4	BD 390	
	1603 8702 07	• 1	PDP-control option			0147 1487 03	8	BD 520	
2010	1900 0711 62	•• 1	Module			0147 1487 03	8	BD 780	
2020	1622 0661 02	•• 1	Cable			0147 1487 03	8	BD 1050	
2030	1088 0031 12	•• 1	Connector		2040	•	Nut		
2040	1088 0031 07	•• 1	Connector			0266 2114 00	4	BD 260	
	1603 8702 08		Option Sonic nozzle			0266 2114 00	4	BD 390	
			BD 260			0266 2114 00	8	BD 520	
	1603 8702 10		BD 390			0266 2114 00	8	BD 780	
	1603 8702 12		BD 520			0266 2114 00	8	BD 1050	
	1603 8702 14		BD 780		3050	•	Washer		
	1603 8702 16		BD 1050			0301 2378 00	8	BD 260	
3010	• 1	Sonic nozzle				0301 2378 00	8	BD 390	
	1617 9049 01		BD 260			0301 2378 00	16	BD 520	
	1617 9049 02		BD 390			0301 2378 00	16	BD 780	
	1617 9049 03		BD 520			0301 2378 00	16	BD 1050	

Notes:

Notes:

Atlas Copco Desiccant Dryers

BD 260, BD 390, BD 520, BD 780, BD 1050

Parts list

What sets Atlas Copco apart as a company is our conviction that we can only excel in what we do if we provide the best possible know-how and technology to really help our customers produce, grow and succeed.

There is a unique way of achieving that - we simply call it the Atlas Copco way. It builds on **interaction**, on long-term relationships and involvement in the customers' process, needs and objectives. It means having the flexibility to adapt to the diverse demands of the people we cater for.

It's the **commitment** to our customers' business that drives our effort towards increasing their productivity through better solutions. It starts with fully supporting existing products and continuously doing things better, but it goes much further, creating advances in technology through **innovation**. Not for the sake of technology, but for the sake of our customer's bottom line and peace-of-mind.

That is how Atlas Copco will strive to remain the first choice, to succeed in attracting new business and to maintain our position as the industry leader.

