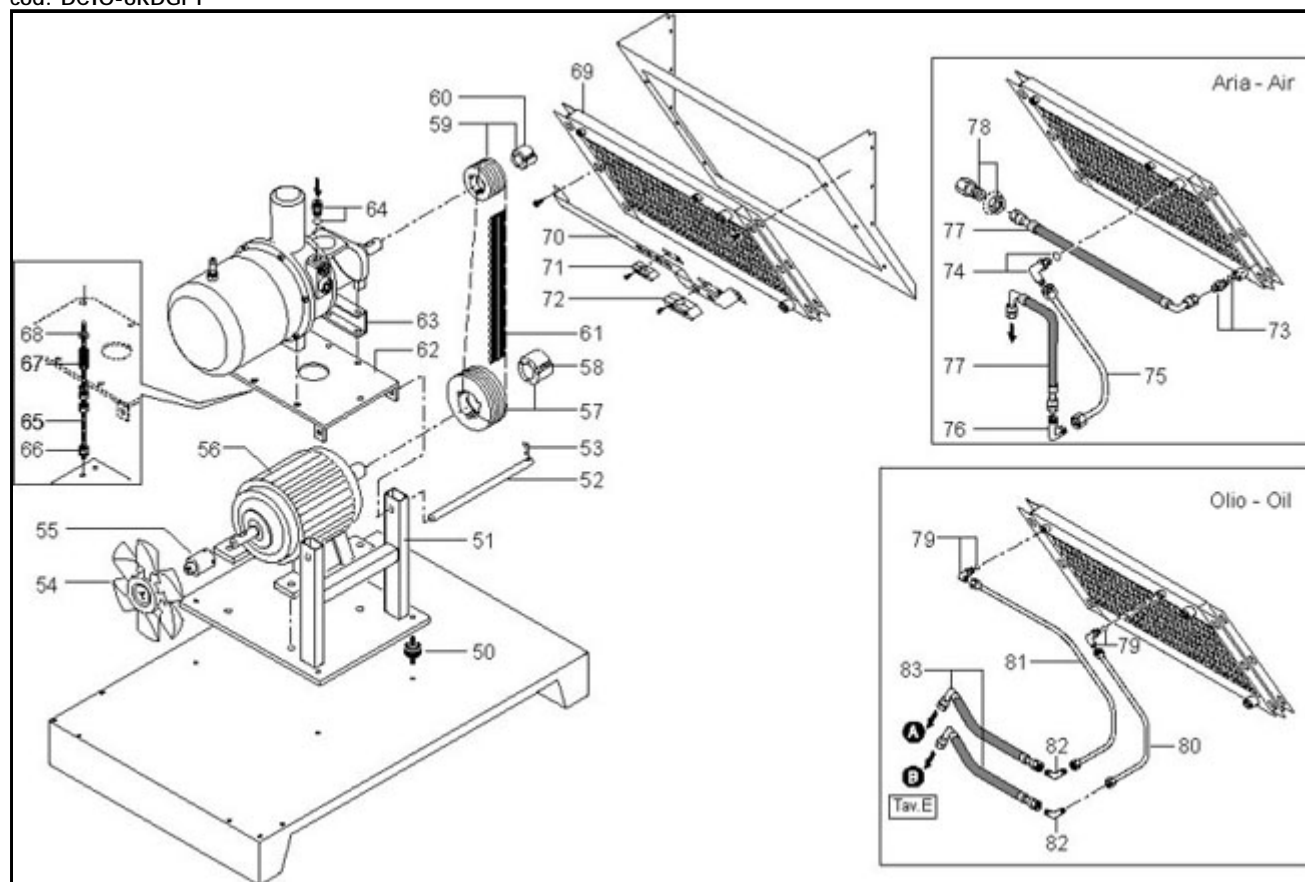




ROTAR MCI 50 08 (660FO1A922)

cod: DCIO-6RDGPY



cod: 004

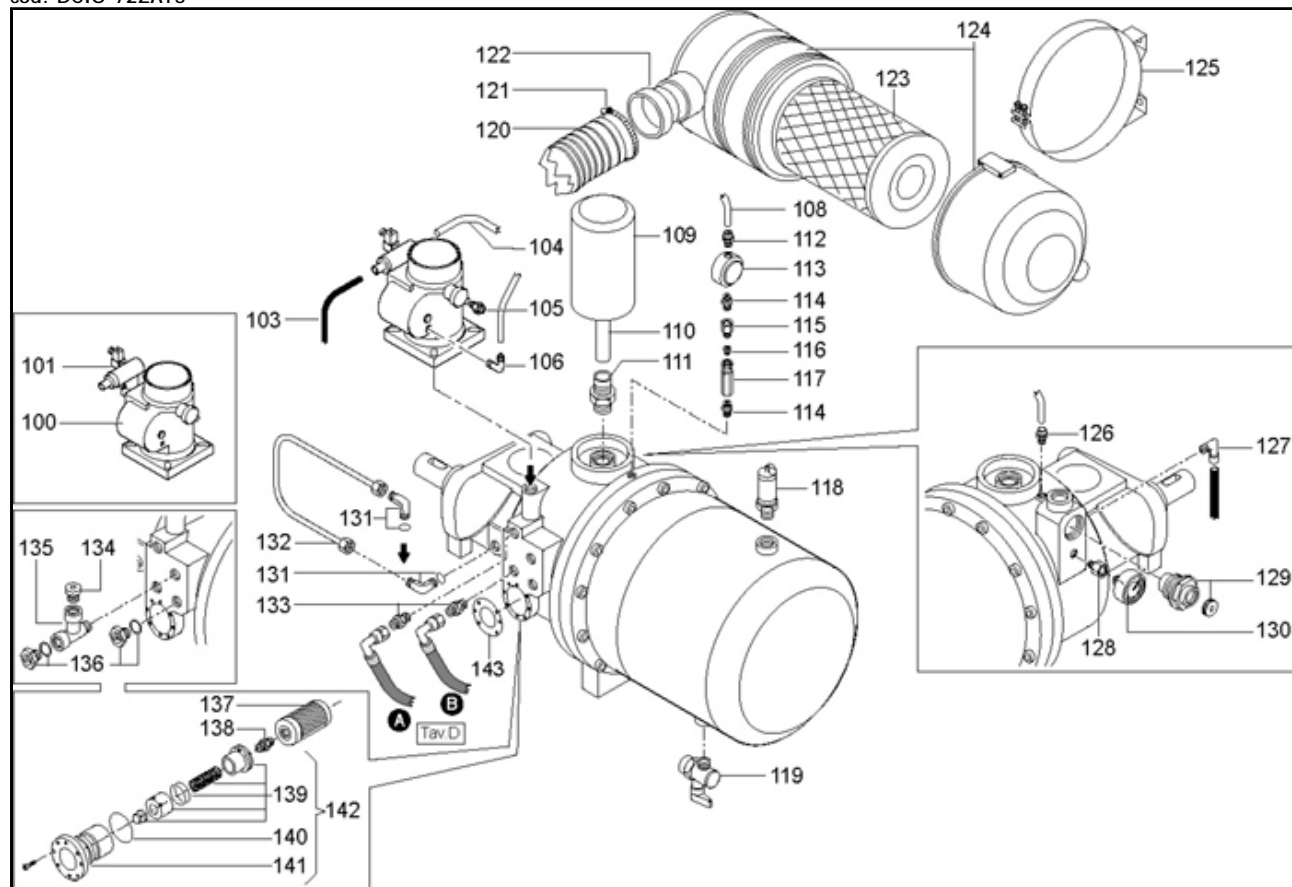
Rif	Codice	Descr.	Qtà Cons.	
50	020249000	ANTIVIBRANTE A75X40 SH70 MM-12	4	4
51	160OF0086	CASTELLO KD403-503	1	-
52	160OF0005	PERNO BASCULANTE KD403E	1	-
53	015125000	COPPIGLIA 5X50	2	2
54	024078000	VENTOLA HF380/8/8/25/LS/PP/S/F+M NS.DIS	1	1
55	160OF0003	MOZZO PORTA VENTOLA KD403-503	1	-
56	540S007622	MOT RKD50 180LB 2P 40050	1	-
57	140337004	PULEGGIA 236-5SPA X BUSSOLA 3020	1	-
58	011000197	BUSSOLA 3020 FORO 48	1	-
59	140325004	PULEGGIA 118-5SPA-BUSSOLA 2012	1	-
60	011000198	BUSSOLA 2012 FORO 45	1	-
61	045140000	CINGHIA DENTATA SPAX-1490	5	10
62	160OF0087	PIASTRA SUPP. VITE KD403-503	1	-
63	160OF0009	SUPP.ANT.IKD100	1	-
64	011000219	NIPPLO + OR JIC 1"5/8X1"1/4 GAS	1	-
65	160OF0006	TIRANTE TENS.KD253-603	1	-
66	014003006	DADO ESAG.M12 UNI5588-5D ZINC	3	-
67	160OF0004	MOLLA BL X STAMP 16,5X32H90.S32090	1	-
68	014005009	ROND.13X24 UNI6592-69 ZINC.#	3	-
69	048459000	RADIATORE ARIA OLIO 40-60 HP	1	-
70	160OF0041	STAFFA FISSAGGIO TUBI KD503	1	-
71	160OF0043	CAVAL.POLIPR.TUBO 16+PIASTRA C3-16PP/P3	2	-

72	160OF0042	CAVAL.POLIPR.TUBO 30+PIASTRA C5-30PP/P5	1	-
73	011000219	NIPPLO + OR JIC 1"5/8X1"1/4 GAS	1	-
74	011000217	RACC.L.GIR.+OR JIC 1"5/8-12X1"1/4GAS	2	-
75	160OF0037	TUBO MANDATA ARIA KD503 ACC.	1	-
76	011000218	RACC.L JIC 1"5/8-12	1	-
77	160OF0035	TUBO FLEX COD.999/G/3990 KD503	2	-
78	011000224	GIUNZ. 1"1/4GX1"5/8 12UN	1	-
79	011000220	RACC.L.GIR.+OR JIC 7/8-14X3/4"GAS	2	-
80	160OF0039	TUBO MANDATA OLIO KD503 ACC.	1	-
81	160OF0040	TUBO RITORNO OLIO KD503 ACC.	1	-
82	011000221	RACC.L JIC MM 7/8"-14	2	-
83	160OF0036	TUBO FLEX COD.999/G/3991 KD503	2	-



ROTAR MCI 50 08 (660FO1A922)

cod: DCIO-72ZAT5



cod: 001

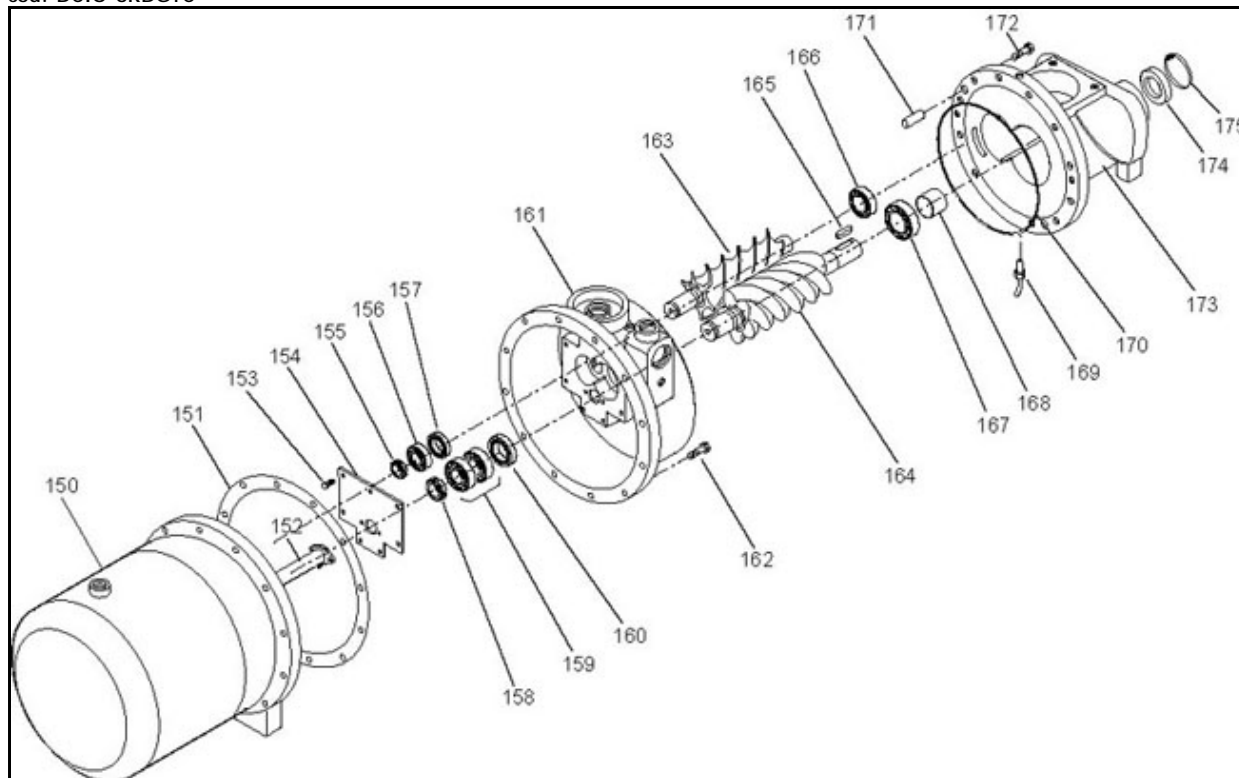
Rif	Codice	Descr.	Qtà	Cons.
100	319238000	REG.ASPIRAZIONE HAKG65	1	-
101	199132480	BLOCCHETTO DI PIL.+EV HAKG65	1	-
103	046001000	TUBO 6X4 RILSAN CALIBRATO	1	-
104	046003000	TUBO RILSAN D10	0,5	-
105	011070000	RIDUZIONE GC1/8X1/8	1	-
106	011000168	RACC.CALZAM.GIREVOLE L M1/8 6X4	1	-
108	046004000	TUBO 6X4 RILSAN TRASPARENTE	1	-
109	048461000	FILTRO DISOL.FSN DEF5004 KD403-50	1	10
110	160OF0007	TUBO SEPARATORE IKD100	1	-
111	160OF0008	NIPPLO FILTRO SEP.LB1374 IKD100	1	-
112	011206000	RACC.ESTREMITA' DIRITTO M R1/8X6+OG	1	-
113	160OF0019	VISORE RECUPERO OLIO	1	-
114	011597000	NIPPLO CON. 1/8X1/8	2	-
115	011000204	RACC.DIRITTO 1/8 MF E2105001	1	-
116	160OF0021	GETTO PER CARB. COD.06413X02X80	1	-
117	047256000	VALV.UNID.DREN.G1/8FF	1	-
118	047253000	VALV.SIC.G3/4 T14 PED+AN.IV CAT VITON	1	-
119	322048000	RUBIN.LINEA L MF1/2 MEZZA FARF	1	-
120	160OF0102	TUBO SPIRALATO SUPERFLEX PU D80	0,7	-
121	015132000	FASCETTA STRINGITUBO 80-100 MET.LARGH.12	2	-
122	160OF0084	ADATTATORE FILTRO ASP. MC50 TUBO 80	1	-
123	017083000	ELEM.FILTR. ARIA FSN 8" PRIM.CH08-14410	1	10
124	317083000	FILTRO ARIA FSN A SECCO 8"PLASTICO	1	2
125	015129000	COLL.FIX.MET FILTRO 8" VIRGIS CF08-14403	1	-

126	011739000	RACC.1101A/6 AUTOM.DIRIT. M1/4TUBO 10	1	-
127	011000203	RACC.GIR.90° 1/8MM E2305040	1	-
128	011000257	PROLUNGA MF CIL R1/4 ZINC. E9201401	1	-
129	347114000	**VALV.PRESS.MIN.MPVL25(NEU)IKD100***	1	-
130	330059000	MANOM.63-16 BAR MET.ATT.P.G1/4+GLIC	1	4
131	011000207	RACC.L.GIR.+OR JIC 1"3/16-12X3/4"GAS	2	-
132	1600F0022	TUBO COLLEG.IKD100 #	1	-
133	011000222	NIPPLO+OR JIC 7/8"-14X3/4"GAS	2	-
134	011000208	TAPPO DIN 3/4 ART.107605	1	-
135	011000199	RACC.T3/4 MFF 304605	1	-
136	012100000	SPIA LIV.OLIO 3/4" HP ALL.	2	-
137	048460000	FILTRO OLIO INTERNO IKD100	1	10
138	160AO0008	NIPPLO FILTRO OLIO	1	-
139	213500036	KIT VALVOLA TERMOST. IKD80 80°	1	1
140	010205000	ANELLO OR 146 VITON	1	-
141	1600F0065	CORPO VALV.TERM. MSC80	1	-
142	347113000	VALV.TERMOST.COMPL.	1	-
143	1600F0134	GUARNIZ.VALVOLA TERMOSTATICA	1	-



ROTAR MCI 50 08 (660FO1A922)

cod: DCIO-6RDGTC



cod: 002

Rif	Codice	Descr.	Qtà	Cons.
150	160OF0020V	SERB.IKD 100 VERN.	1	-
151	160OF0012	GUARNIZ.SERB.IKD100	1	-
152	160OF0024	TUBO SCARICO IKD100 +FLANGIA ZINC	1	-
153	014011086	VTCEI M10X25 UNI5931-8.8 ZINC.	7	-
154	160OF0013	COPERCHIO POST.IKD100	1	-
155	033141000	GHIERA KMT6	1	-
156	033139000	CUSCINETTO 7306 BEP	1	-
157	033138000	CUSCINETTO NU306 ECP	1	-
158	033142000	GHIERA KMT9	1	-
159	033140000	CUSCINETTO 7209 BEP	2	-
160	033137000	CUSCINETTO NU2209 ECP	1	-
161	160OF0017	CORPO MANDATA IKD100 FINITO	1	-
162	014010102	VTE M14X50 UNI5739-8.8 ZINC.	12	-
163	130800002	ROTORE FEMMINA VITE IKD100 FINITO	1	-
164	130800004	ROTORE MASCHIO VITE IKD100 FINITO	1	-
165	018034000	LINGUETTA A14X9X60 UNI6604-69	1	-
166	033138000	CUSCINETTO NU306 ECP	1	-
167	033137000	CUSCINETTO NU2209 ECP	1	-
168	010203000	ANELLO INTERNO IR 45X50X25	1	-
169	008377000	SONDA KTY 10-5+CAVO G/S L=2,5MT	1	-
170	010208000	ANELLO OR 372-6870(GUARNIZ.CORPO)	1	-
171	015130000	SPINA CILINDRICA 16X40 TOLL.M6 ISO8735	2	-
172	014044005	VTE M12X35 DIN6921-8.8 ZIGR.ZINC.	13	-
173	160OF0015	CORPO COMPRESSORE IKD100 FINITO	1	-
174	010204000	ANELLO HN 2390 50X72X8 ERLING	1	-
175	010202000	ANELLO D'ARRESTO 72-I IKD100	1	-