

Instrument list for stationary compressors:

GA5-11 ; GA11-30 ; GA15-22 ; GA30-45 ; GA30-75 ; GA55-90

GA7-11VSD ; GA15-30VSD ; GA37-55VSD ; GA75-90VSD

Component list**Temperature sensors PT1000 (make Jumo)**

Name	Description	AC ref	Range °C	Conn. size
TT01	Ambient	1089 0574 12	-30..+60 °C	-
TT11	Element out	1089 0574 55	-40..+240 °C	ISO7-R3/8
TT51	Water in	1089 0574 49	-40..+270 °C	ISO7-R3/8
TT52	Water out	1089 0574 49	-40..+270 °C	ISO7-R3/8
TT53	Energy Recovery In	1089 0574 49	-40..+270 °C	ISO7-R3/8
TT54	Energy Recovery out	1089 0574 49	-40..+270 °C	ISO7-R3/8
TT90	LAT dryer	1089 0574 71	-10..+60 °C	-

Pressure transducers (make Kavlico)

Name	Description	AC ref	Range bar(e)	Conn. size
PT20	Delivery air	1089 0575 54	0...17 bar	¼ NPT-18
PDT01	Oil separator	1089 0575 43	0...3 bar	2x G1/8

Solenoid valves (make Bürkert)

Name	Description	AC ref	Range bar(e)	Conn. size
Y1 (1)	Load/Unload solenoid 110V 50hz	1089 0621 20	16 bar	2x 1.5mm
	Load/Unload solenoid 120V 60hz	1089 0621 19		
Y1 (2)	Load/Unload solenoid 110V 50hz	1089 0702 09	16 bar	2x 0.8mm
	Load/Unload solenoid 120V 60hz	1089 0702 10		
Y1 (3)	Blow-off solenoid (vsd) 115V	1089 0580 03	16 bar	G3/8
Y2	Modulating control 110V 50hz	1089 0621 09	16 bar	G1/8
	Modulating control 120V 6hz	1089 0621 02		
Y10	Timer drain	1089 0640 21	16 bar	G1/8
Y51	Water shut off valve	1089 0624 04	10 bar	G1¼

Availability on GA ranges:

	5-11	7-11 VSD	11-30c	15-22	15-30 VSD	30-45	30-75	37-55 VSD	55-90	75-90 VSD
TT01		X				X	X	X	X	X
TT11	X	X	X	X	X	X	X	X	X	X
TT51						X	X	X	X	X
TT52						X	X	X	X	X
TT53			X	X	X	X	X	X	X	X
TT54			X	X	X	X	X	X	X	X
TT90	X	X	X	X	X	X	X	X	X	X
PT20	X	X	X	X	X	X	X	X	X	X
PDT01									X	X
Y1 (1)	X	X								
Y1 (2)			X	X		X	X		X	
Y1 (3)					X			X		X
Y2	X		X			X	X		X	
Y10				X						
Y51						X	X	X	X	X

Display list**Temperature displays**

Name	Description	Range °C	Step
TT01	Ambient	-40..+340 °C	1 °C
TT11	Element out	-40..+340 °C	1 °C
TT51	Water in	-40..+340 °C	1 °C
TT52	Water out	-40..+340 °C	1 °C
TT53	Energy Recovery In	-40..+340 °C	1 °C
TT54	Energy Recovery out	-40..+340 °C	1 °C
TT90	LAT dryer	-40..+340 °C	1 °C

Pressure displays

Name	Description	Range bar(e)	Step
PT20	Delivery air	0...17 bar	0.1 bar
PDT01	Oil separator	0...3 bar	0.1 bar

Settings/ protections list

Temperatures	Description	Protection	Level	Setting
TSH 11	Element out	Warning	High	110 °C
TSHH 11	Element out	Shutdown	High	120 °C
TSH 51	Water in	Warning	High	50 °C
TSH 52	Water out	Warning	High	60 °C
TSH 90	ID dryer LAT	Warning	High	Is function of ambient temp.
TSL 90	ID dryer LAT (freeze protection)	Warning	Low	-1 °C
Pressures	Description	Protection	Level	Setting
PDST 01	Oil separator	Warning	High	1 bar
PSHH 20 (3)	Delivery air	Shutdown	High	14,5 bar

Remarks

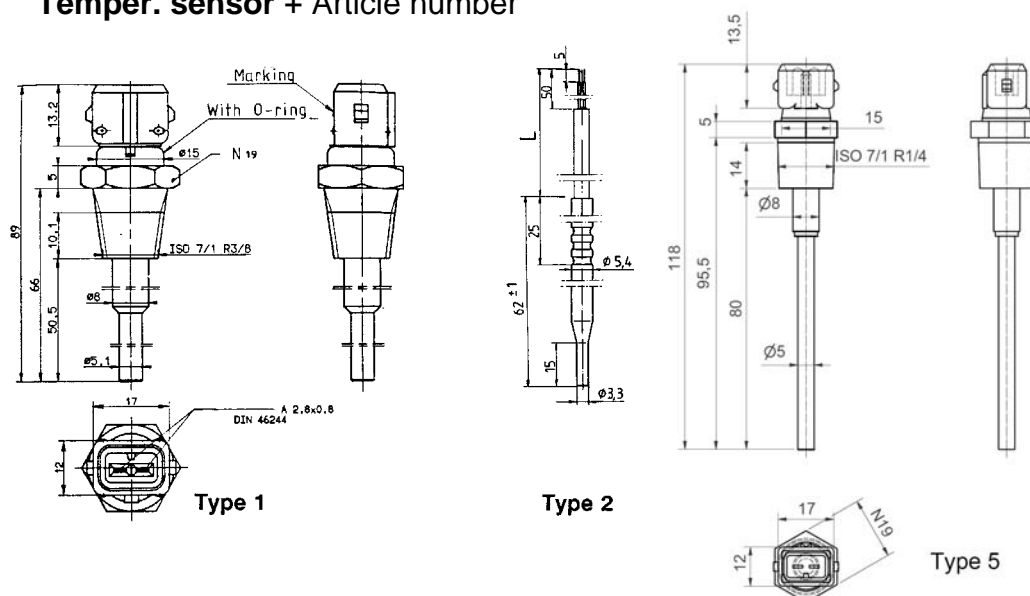
- (1) With old unloader
- (2) With new unloader (vacuum controlled unloader)
- (3) only for VSD versions (with inlet arrestor)

TEMPERATURE SENSOR

JUMO Pt 100 / Pt 1000

Internal name + designation :

Temper. sensor + Article number



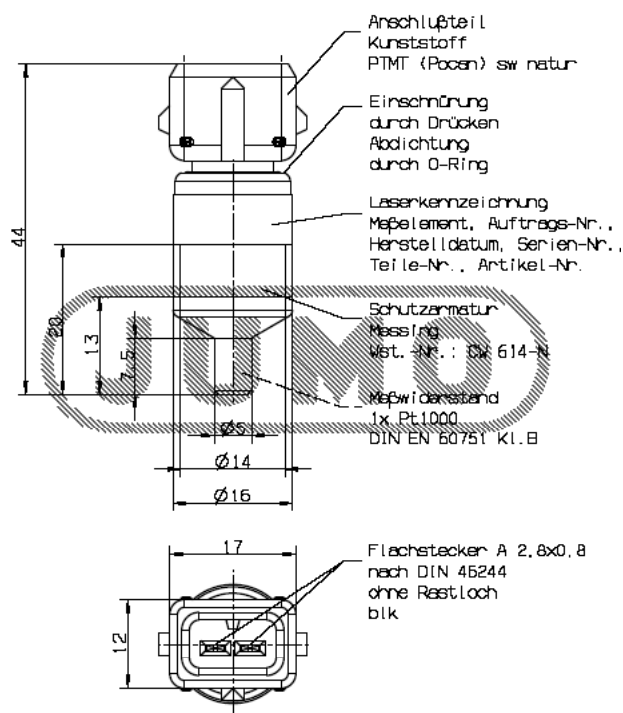
Technical data		Article number
Common data	Distinction data	

Technical data		Article number
Common data	Distinction data	
Pt 1000 Marked with A.C. article number, JUMO type and production data Cable type (PVC) CY- UL style 2589; 2 x 0.25 mm² Screened, temp range: +105 °C	Housing : Ni Cr 15 Fe L = 1300 mm Temperature range : - 10 °C to + 60 °C +14 °F to +140 °F	Type 2 1089 0574 79
	Housing : Ni Cr 15 Fe L = 1500 mm Temperature range : - 10 °C to + 60 °C +14 °F to +140 °F	Type 2 1089 0574 83
	Housing : Ni Cr 15 Fe L = 2000 mm Temperature range : - 10 °C to + 60 °C +14 °F to +140 °F	Type 2 1089 0574 84
	Housing : Ni Cr 15 Fe L = 2500 mm Temperature range : - 10 °C to + 60 °C +14 °F to +140 °F	Type 2 1089 0574 71
	Housing : Ni Cr 15 Fe L = 3000 mm Temperature range : - 10 °C to + 60 °C +14 °F to +140 °F	Type 2 1089 0574 72
	Housing : Ni Cr 15 Fe L = 3200 mm Temperature range : - 10 °C to + 60 °C +14 °F to +140 °F	Type 2 1089 0574 80
	Housing : Ni Cr 15 Fe L = 4000 mm Temperature range : - 10 °C to + 60 °C +14 °F to +140 °F	Type 2 1089 0574 73
	Housing : Ni Cr 15 Fe L = 4250mm Temperature range : - 10 °C to + 60 °C +14 °F to +140 °F	Type 2 1089 0574 81

Internal name + designation :

Temper. sensor + Article number

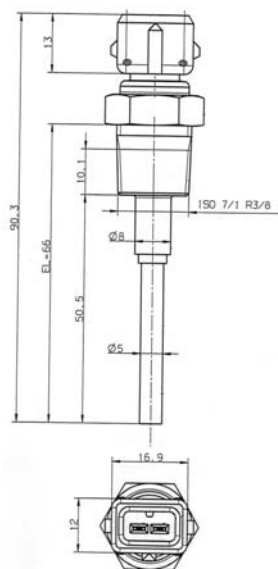
Type 8



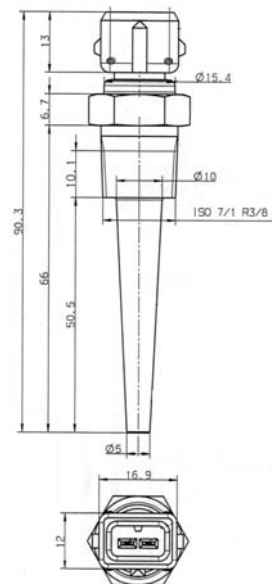
Technical data		Article number
Common data	Distinction data	
Pt 1000 Marked with A.C. article number, JUMO type and production date	PT1000 acc. kl.2 DIN B type 902004/99-.. temp range -30...+60°C material : messing for mounting in rubber grommet	1089 0574 12

Internal name + designation :

Temper. sensor + Article number



Type 9



Type 10

Technical data		Article number
Common data	Distinction data	

Pt 1000
Marked with A.C. article number,
JUMO-type and production date

Housing : High gradesteel,
Nipple: W.no. 1.4301
Tube : W. No. 1.4571
With O-ring
Gold plated contacts
Temperature range :
-40 °C to +270 °C
-40 °F to +518 °F

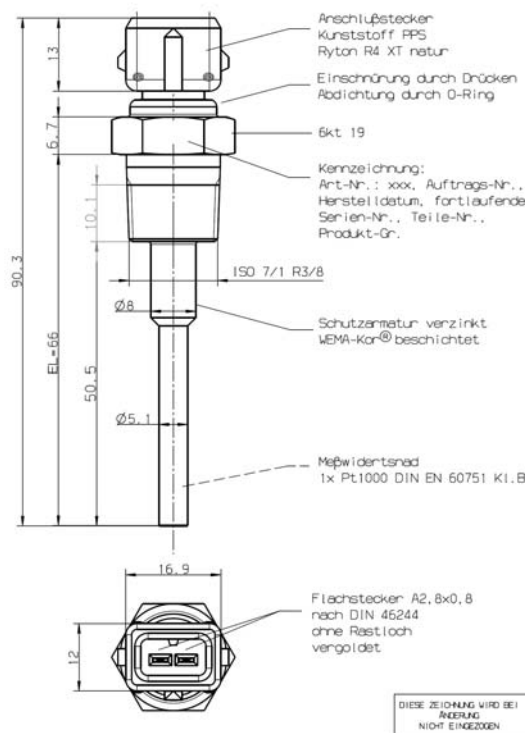
Type 9

1089 0574 49

Internal name + designation :

Temper. sensor + Article number

Type 12



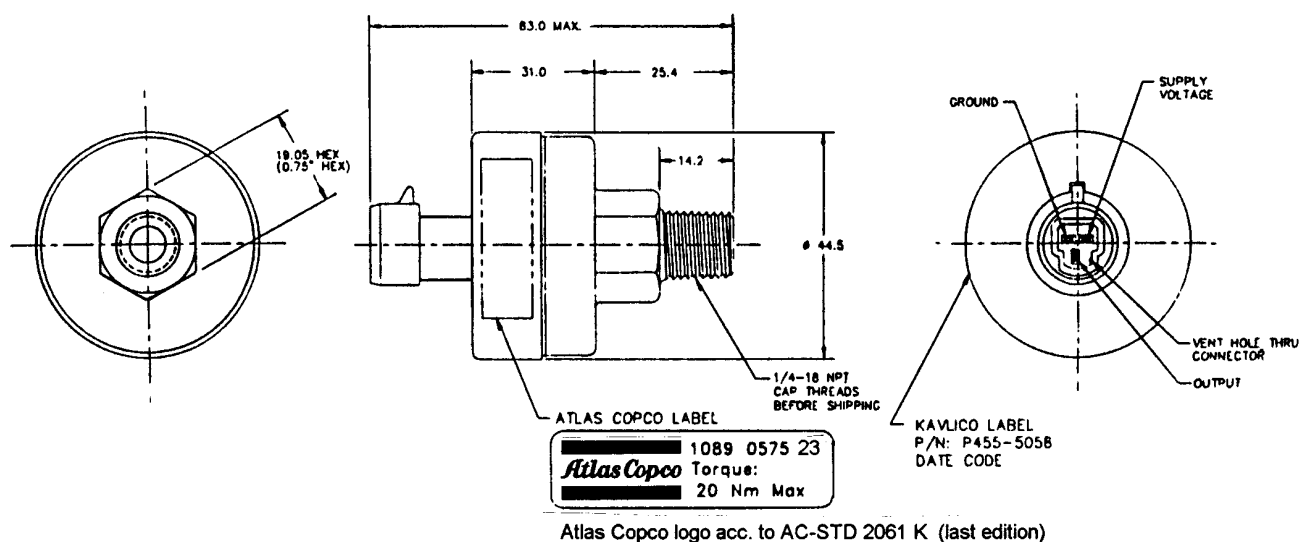
Common data	Distinction data	
<p>Jumo type: 902004/10 Pt 1000 Marked with A.C. article number, JUMO-type and production date</p>	<p>Designation: 90.300-F41-3Ma Housing : Zinc plated, coated with "WEMA-Kor®" With O-ring Gold plated contacts Temperature range : -40 °C to +240 °C -40 °F to +460 °F</p>	<p>Type 12 1089 0574 55</p>

PRESSURE TRANSDUCER

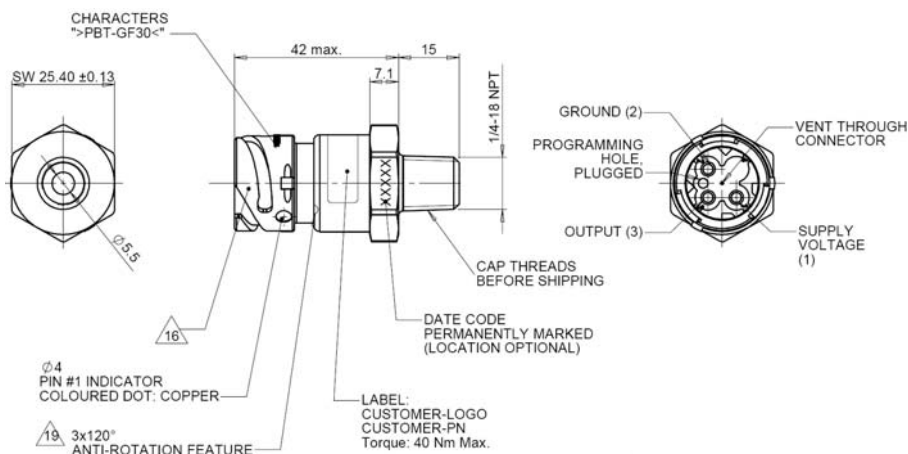
KAVLICO

Internal name + designation :

Press. transduc. + Article number



Technical data		Article number
Common data	Distinction data	



Technical data		Article number
Common data	Distinction data	

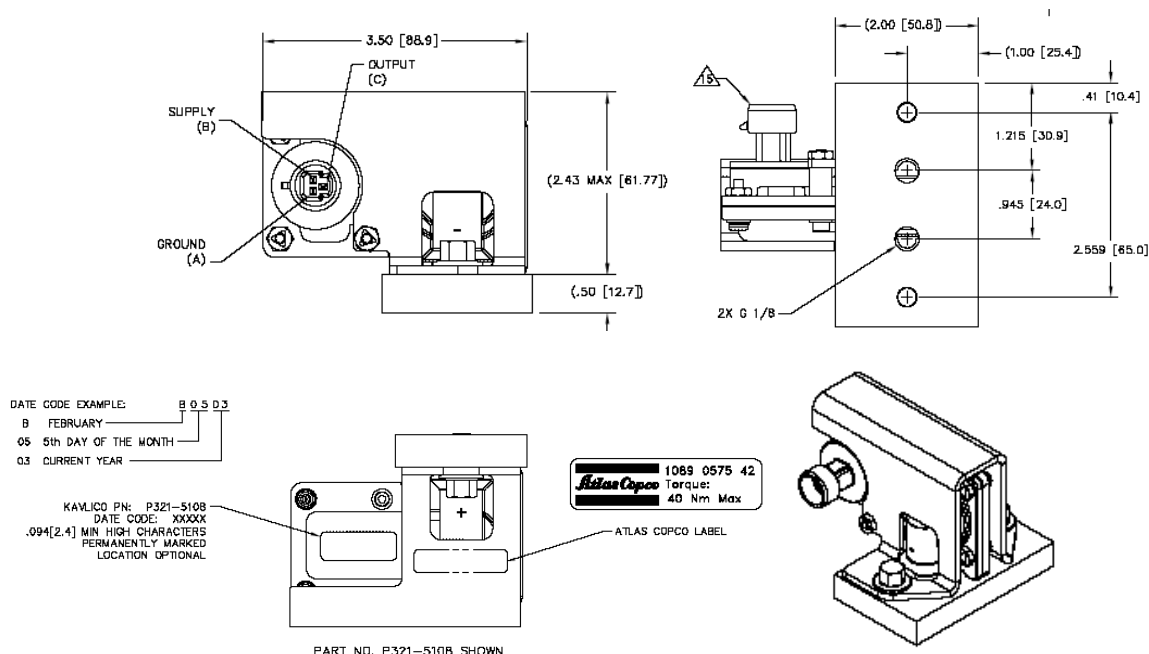
Material (main body) :
303 Stainless steel
Sealing material : Nitrile
Media compatibility :
Oil, water, air.
Operating temper.: -20 °C to 100 °C
Supply voltage (nominal) :
5 V DC \pm 0,25 V DC
Supply current (nominal) : 5 mA
Recommended mounting torque: 40Nm

Type : P2000-5075
Includes extra EMC-filter
Pressure range :
0 to 17 bar
Burst pressure :
51,7 bar

1089 0575 54

Internal name + designation :

Press. transduc. + Article number



Technical data		Article number
Common data	Distinction data	

Material (main body) :

Steel, ULTEM 2310

Sealing material : Fluorsilicone

Protection : IP 55

Media compatibility :

Oil (mineral, screw compressor oil,
PAO synthetic), water, air.

Operating temper.: -20 °C to 100 °C

Ambient temperat.: -40 °C to 100 °C

Supply voltage (nominal) :

5 V DC + 0,25 V DC

Supply current (nominal) : 4 mA

Markings to be applied to the housing :

- Atlas Copco logo and article number
- Manufacturer model designation and
serial number

- Allowed tightening torque

- + and - ports

Type: P321-5108-1

Without adapter plate

Weight 354g max.

See P321-5108

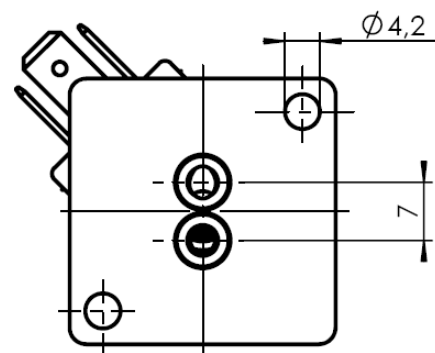
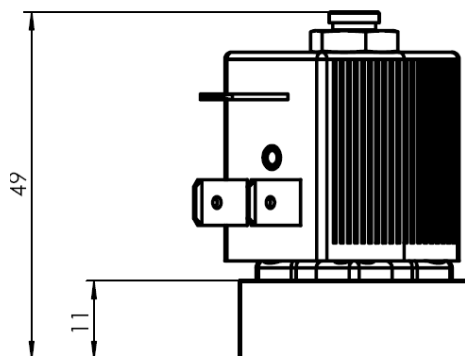
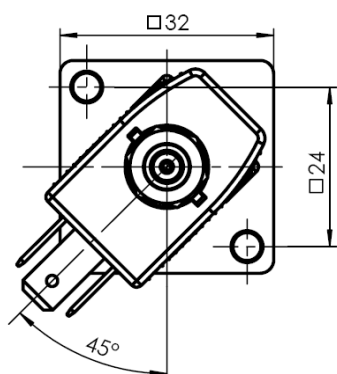
1089 0575 43

SOLENOID VALVE

BÜRKERT 6012

Internal name + designation :

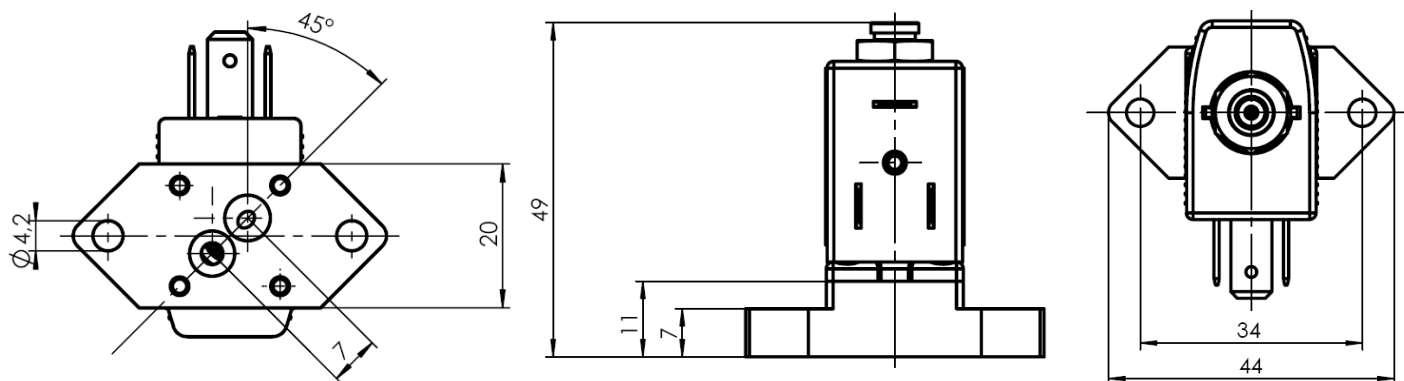
Solenoid valve + Article number



Technical data		Article number
Common data	Distinction data	

Internal name + designation :

Solenoid valve + Article number



Technical data		Article number
Common data	Distinction data	

Type : 6012

3/2 way mini solenoid valve, dir. acting

Orifice : 0,8 mm

NC, Normally closed

Seal material: FPM

Body material: PA

Fluid temperature:

min: -10°C

max: +100°C

Max. ambient temperature: 75°C

601200-CAABXFFPAFB01-
2-110/50-04*JB07+MT13
+NA38

1089 0702 09

110 V 50Hz 4W
max. pressure: 16 bar
According Burkert drawing:
F1 651 569

601200-CAABXFFPAFB01-
2-120/60-04*JB07+MT13
+NA38

1089 0702 10

120 V 60Hz 4W
max. pressure: 16 bar
According Burkert drawing:
F1 651 569

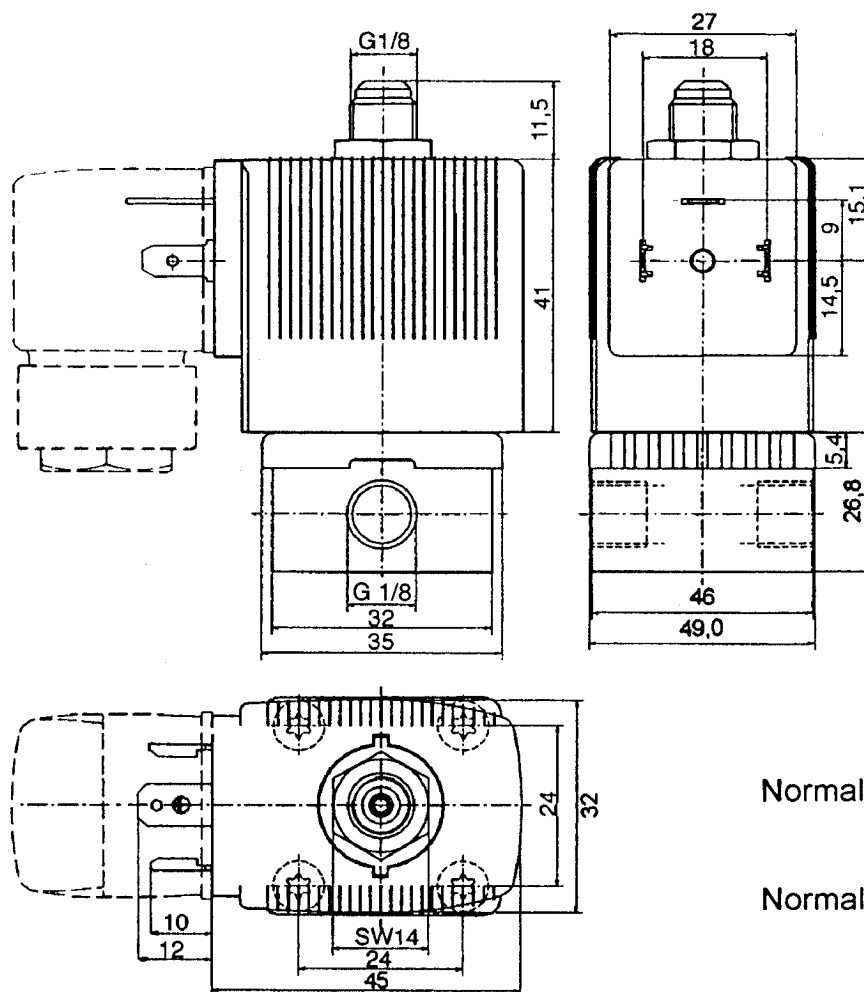
SOLENOID VALVE

BÜRKERT 6014

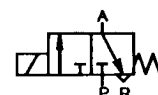
Internal name + designation :

Solenoid valve + Article number

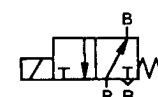
Type 1 : Threaded port



Normally closed



Normally open



Technical data		Article number
Common data	Distinction data	

Technical data		Article number
Common data	Distinction data	

Type : 6014 C 1,5 FF-MS G1/8

Without connection head

Orifice : 1,5 mm

NC, Normally closed

Max. operating pressure for water, oil
and non-corrosive gases : **16** bar(e)

Max. ambient temp. : +55 °C

Medium temp. : -10 °C to +100 °C

110 V

50 Hz

1089 0621 09

Type : 6014 C 1,5 FF-MS G1/8

Without connection head

Orifice : 1,5 mm

NC, Normally closed

Max. operating pressure for water, oil
and non-corrosive gases : **16** bar(e)

Max. ambient temp. : +55 °C

Medium temp. : -10 °C to +100 °C

CSA approved – UR recognized

120 V

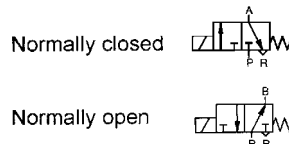
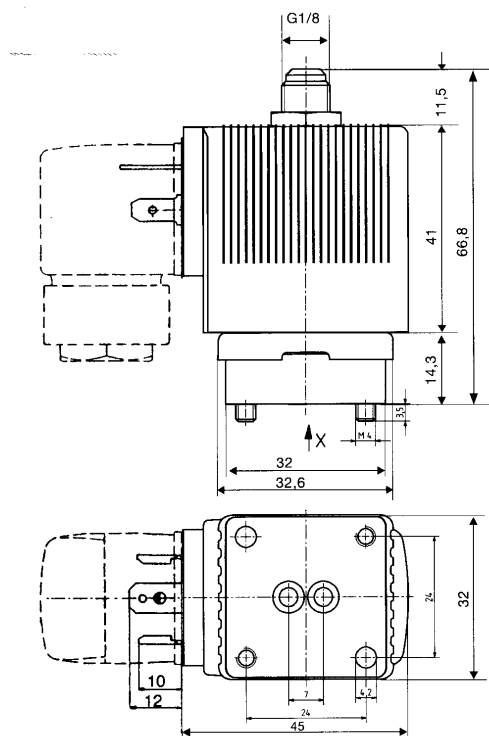
60 Hz

1089 0621 02

Internal name + designation :

Solenoid valve + Article number

Type 2 : Sub-base connection



Technical data		Article number
Common data	Distinction data	

Type : 6014 – C - 1,5 - FF - MS – 115 V 60 Hz E 000 **16 bar(e)** 1089 0621 19
FB01

Without connection head

Orifice : 1,5 mm

NC, Normally closed

For water, oil and non-corrosive
gases

Max. ambient temp. : +55 °C

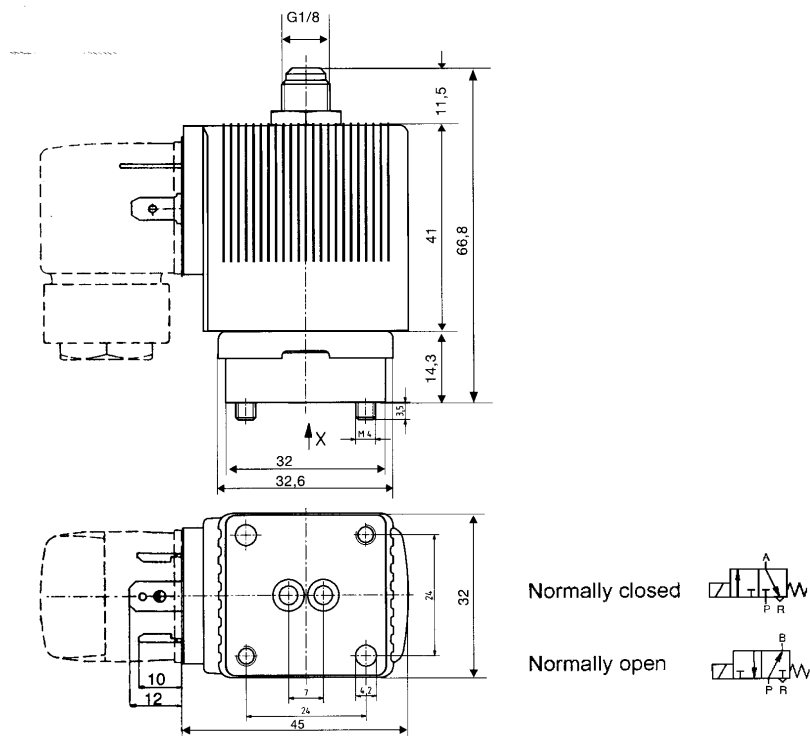
Medium : -10 °C to +90 °C CSA

approved, UR recognized

Internal name + designation :

Solenoid valve + Article number

Type 2 : Sub-base connection



Technical data		Article number
Common data	Distinction data	

Technical data		Article number
Common data	Distinction data	

Type : 6014 C 1,5 FF-MS-FB01

Without connection head

Orifice : 1,5 mm

NC, Normally closed

For water, oil and non-corrosive
gases

Max. ambient temp. : +55 °C 110 V 50 Hz E 000 **16** bar(e) 1089 0621 20

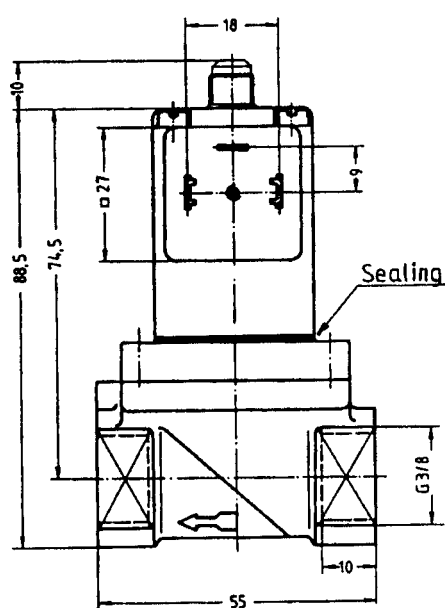
Medium : -10 °C to +100 °C

SOLENOID VALVE

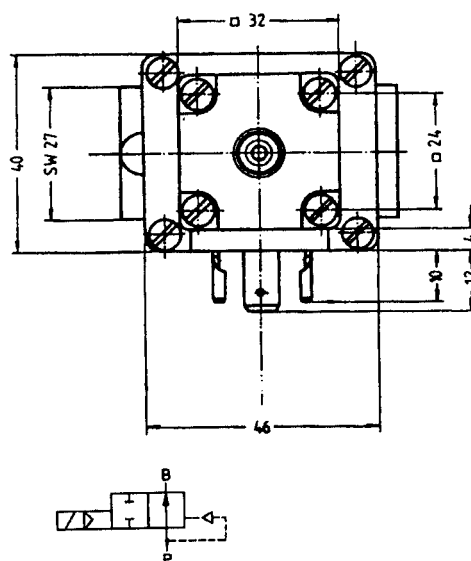
BÜRKERT Type 280

Internal name + designation :

Solenoid valve + Article number



View " X "



Normally open

Technical data		Article number
Common data	Distinction data	

Type 280 – B – 13 – F – Ms 3/8

Without connection head

Orifice : 13 mm

Normally open

For water, oil and non-corrosive gases

Max. ambient temp. : +55 °C

Max. medium temp. :

-10 °C to +90 °C

Kv flow factor : 4,0 m3/h

Forged brass body

Membrane material : FPM

IP 65

Volt.

115 V

Freq.

AC, 50/60 Hz

Max. oper. press

16 bar(e)

1089 0580 03