

To: All Quincy Distributors

From: Quincy Compressor

Subject: Service Alert #387

Date: 12/04/2012

## Automatic Drain Wear Kit

As the drain is one of the most critical components inside a dryer, its maintenance is extremely important. This is why a dedicated wear kit has been released. Of course the same considerations can be applied for stand-alone drain version. This communication provides information about the automatic drain wear kit. In particular, there will be explanation about its application, its content and how to assembly it.

### General Information

The wear kit item number is 2200902017. It is suitable for ED12 drains (QPNC 10 to QPNC 250 dryer range), LD drains (QPNC 300 to QPNC 3000 dryer range), in production since the end of 2011) and LD stand-alone drains. The kit cannot be used for old ECD drains.

Maintenance on drain is recommended as follow:

- drain filter cleaning: weekly
- wear kit application: once per year

These maintenance intervals are intended for well ventilated, not dusty and not high humidity environments. For particular high humidity ambient conditions, the frequency of control should be doubled.

The components inside the wear kit (Fig. 1) are:

1. spring
2. piston
3. diaphragm
4. o-ring
5. filter cup
6. filter
7. metal ring
8. hose holder



Fig.1 Wear kit

### Assembly Instruction

- Disassemble the drain unscrewing the 8 screws on its bottom side (needed tools Torks T10 and T30)



Fig. 3.a ED12 drain opening

Fig. 3.b LD drain opening

- Remove the o-ring, the diaphragm, the piston and the spring



Fig. 4.a ED12 drain disassembly



Fig. 4.b LD drain disassembly

- Clean the drain main body
- Mount the new o-ring

- Mount first the new spring and then the new piston (piston part without rubber towards the spring)
- Mount the new diaphragm paying attention to the alignment



Fig. 5.a ED12 drain reassembly



Fig. 5.b LD drain reassembly

- Only for ED12: be carefully do not reverse the floater (magnet side has to be toward who is applying the kit)
- Reassembly and close the drain



Fig. 6 ED12 floater



Torque  
0,5 Nm (+0,2 ; -0,1)

Torque  
6,5 Nm (+2 ; -1)

Fig. 7.a ED12 drain closing



Torque  
8 Nm (+2 ; -1)

Fig. 7.b LD drain closing

- Unscrew the drain filter and install the new one (only in drain models with internal filter)



Fig. 8 ED12 filter and filter cup

→ When changing or cleaning the filter always remember to first mount the filter in the filter cup and then screw the whole assembly (filter + cup). Wrong assembly can ruin the filter mesh, see Fig. 9 below.

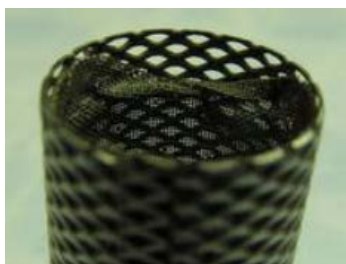


Fig. 9 Damaged filter mesh

### Application

All QPNC 10 to QPNC 3000 dryer range and LD stand-alone drains.

### Required Parts

Wear kit item number 2200902017.

### Safety Precautions

The operator must employ safe working practices and observe all related local work safety requirements and regulations.

- Maintenance must only be performed by authorized, trained and specialized personnel.
- Before maintenance, repair work, adjustment or any other non-routine checks, stop the compressor, switch off the voltage, press the emergency button and depressurize the compressor. In addition, the power insulating switch must be opened and locked.
- Use only the correct tools for maintenance and repair work.
- All maintenance work shall only be undertaken when the machine has cooled down.
- A warning sign bearing a legend such as 'Work in progress; do not start' shall be attached to the starting equipment.
- Persons switching on remotely controlled machines shall take adequate precautions to ensure that there is no one checking or working on the machine. To this end, a suitable notice shall be affixed to the remote start equipment.
- Close the compressor air outlet valve before connecting or disconnecting a pipe.
- Before removing any pressurized component, effectively isolate the machine from all sources of pressure and relieve the entire system of pressure.
- Scrupulously observe cleanliness during maintenance and repair. Keep dirt away by covering the parts and exposed openings with a clean cloth, paper or tape.
- Make sure that no tools, loose parts or rags are left in or on the machine.
- All regulating and safety devices shall be maintained with due care to ensure that they function properly. They may not be put out of action.
- Always wear the following personal protective equipment: Work clothing, safety shoes, safety goggles, ear protection and safety gloves when there is a cutting risk or a risk for a heat injury.